

[manuals.plus](#) /

› [Oasser](#) /

› [Oasser Airbrush Kit User Manual](#)

Oasser AK2-2

Oasser Airbrush Kit User Manual

Model: AK2-2

1. INTRODUCTION

This user manual provides essential information for the safe and effective operation, maintenance, and troubleshooting of your Oasser Airbrush Kit with Air Compressor. Please read this manual thoroughly before first use and retain it for future reference.



Figure 1: Complete Oasser Airbrush Kit components.



- | | |
|------------------|-----------------------|
| 1 Airbrush hose | 8 Nozzle 0.2mm 0.5mm |
| 2 Compressor | 9 Wrench |
| 3 Adapter | 10 Sealing ring |
| 4 Storage box | 11 Needle 0.2mm 0.5mm |
| 5 Cleaning brush | 12 Airbrush gun |
| 6 Clean needle | 13 Manual |
| 7 Dropper | |

Figure 2: Detailed view of the Oasser Airbrush Kit contents.

2. SAFETY INSTRUCTIONS

- Always operate the airbrush in a well-ventilated area to avoid inhaling paint fumes.
- Wear appropriate personal protective equipment (PPE), including a respirator, safety glasses, and gloves.

- Keep the air compressor away from water or other liquids to prevent electric shock.
- Ensure the power supply matches the specifications of the air compressor.
- Do not use the airbrush for food-related purposes if it has been used for chemical spraying.
- Keep out of reach of children.
- Always disconnect power before cleaning or performing maintenance.

3. SETUP

Follow these steps to set up your Oasser Airbrush Kit:

1. **Connect the Air Hose:** Securely connect one end of the air hose to the air outlet on the compressor and the other end to the air inlet on the airbrush gun. Ensure connections are tight to prevent air leaks.

Strong Sealing

The exterior have high-quality metal material Internal silicone seal



Excellent Compatibility

1/8-inch hose connection fits most of airbrushes

Figure 3: Air hose connection to the compressor and airbrush.

2. **Connect Power:** Plug the 12V DC adapter into the compressor's power input, then plug the adapter into a suitable electrical outlet.



Figure 4: Compressor connected to power.

3. **Turn On Compressor:** Flip the power switch on the compressor to the "ON" position. The compressor will start operating.
4. **Fill Paint Cup:** Open the lid of the airbrush paint cup and carefully pour your diluted paint into the cup. Do not overfill.

How to use

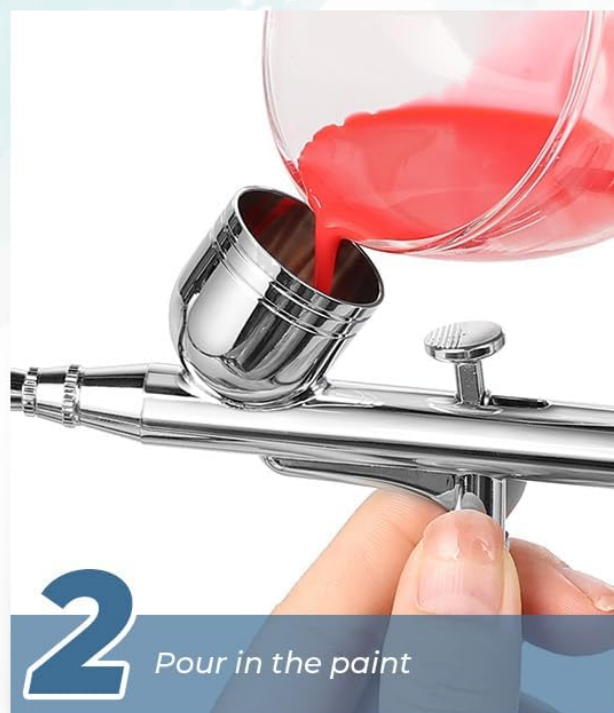


Figure 5: Steps for connecting and filling the airbrush.

Video Guide: Installation Steps

Your browser does not support the video tag.

Video 1: Visual guide demonstrating the installation steps for the Oasser Airbrush Kit.

4. OPERATING INSTRUCTIONS

Dual-Action Operation

The Oasser Airbrush features a dual-action trigger for precise control over both air and paint flow:

- To release air only, press the trigger vertically downwards.
- To spray paint, press the trigger vertically downwards and then pull it back. Pulling the trigger further back increases the paint flow.

Double action mode, more stable effect



Figure 6: Dual-action airbrush operation.

Pressure Adjustment

The compressor features a stepless pressure adjustment knob, allowing you to fine-tune the airflow from 2 PSI to 40 PSI. Rotate the knob to achieve the desired pressure for your specific application.

 <p>High Suitable for larger areas</p>	
 <p>Middle Suitable for model</p>	
 <p>Low Suitable for manicure</p>	

Stepless pressure regulation

2-40PSI

Find a more suitable pressure value



Figure 7: Stepless pressure regulation from 2-40 PSI.

Nozzle and Needle Selection

The kit includes multiple nozzles and needles (0.2mm, 0.3mm, 0.5mm) to accommodate various spraying needs:

- **0.2mm Nozzle/Needle:** Ideal for very fine details and delicate work, such as nail art or intricate model painting.

- **0.3mm Nozzle/Needle:** A versatile size suitable for general purpose airbrushing, including makeup, crafts, and medium-sized models.
- **0.5mm Nozzle/Needle:** Best for larger areas, base coats, or when using thicker paints, providing broader coverage.

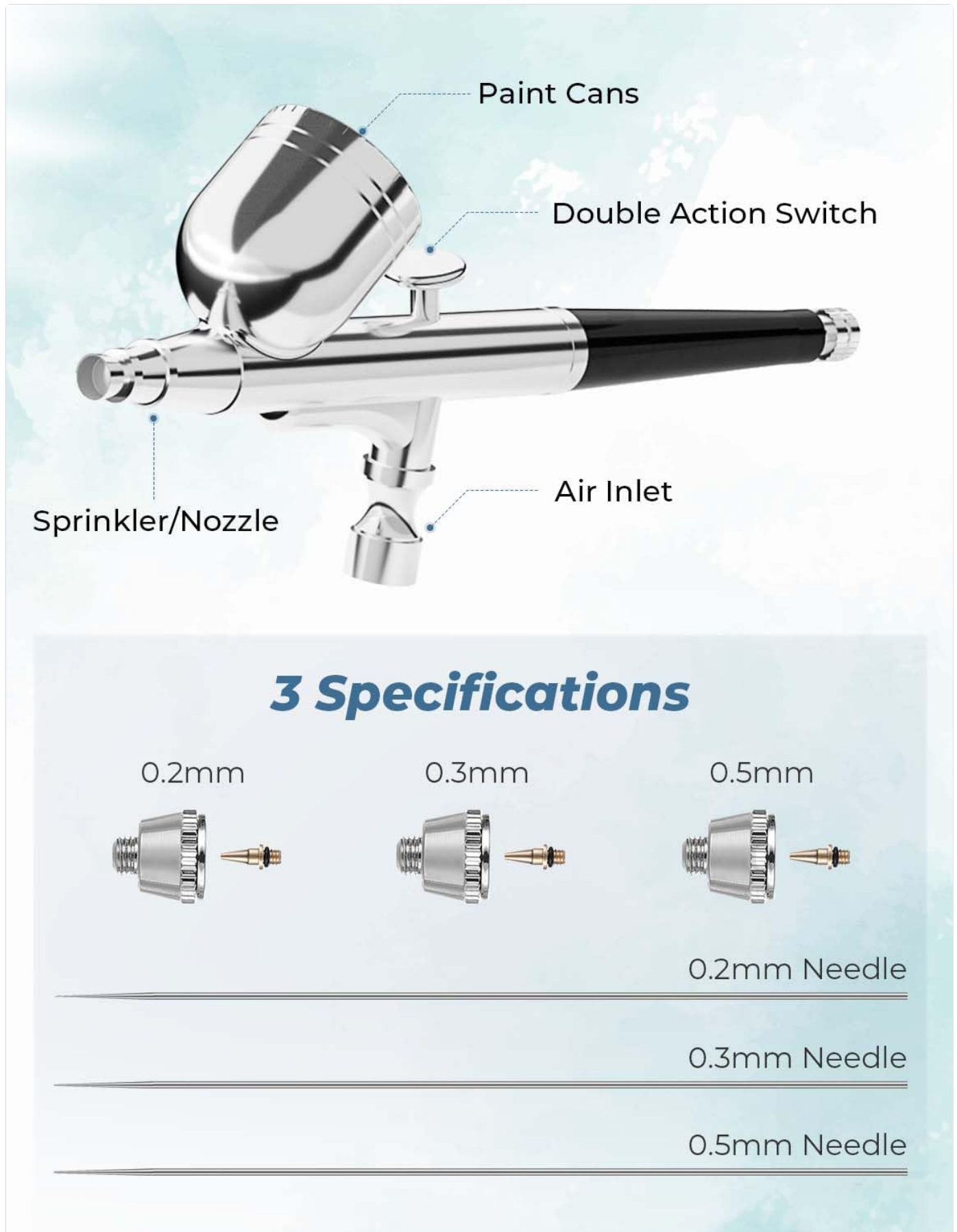


Figure 8: Airbrush components and available nozzle sizes.

Paint Dilution: Always dilute your paint to a milk-like consistency for optimal flow and to prevent clogging. Different paint

types may require different thinning ratios.

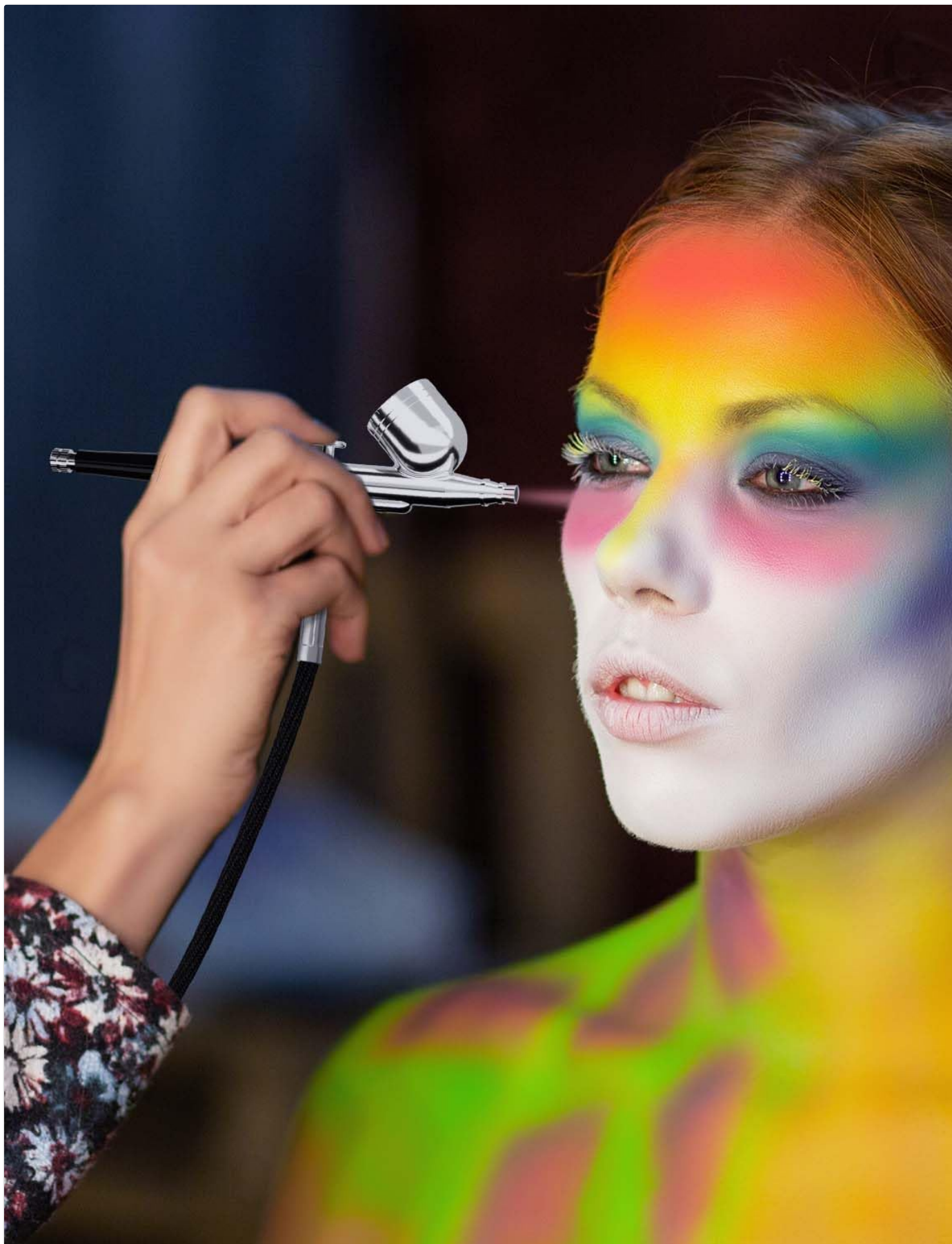


Figure 9: Airbrush in use for makeup application.

5. MAINTENANCE

Proper cleaning and maintenance are crucial for the longevity and performance of your airbrush kit. Always clean the

airbrush immediately after each use, especially when changing colors or finishing a session.

Cleaning Procedure

- 1. Empty Paint Cup:** Discard any remaining paint from the cup.
- 2. Add Cleaning Agent:** Pour a small amount of appropriate airbrush cleaner or water (depending on paint type) into the paint cup.
- 3. Back-Flush:** Cover the nozzle with your finger or a cap and gently pull back the trigger. This will force air back into the paint cup, creating bubbles that help clean the inside.
- 4. Spray Through:** Spray the cleaning solution through the airbrush onto a paper towel or into a waste container until the spray runs clear.
- 5. Repeat:** Repeat steps 2-4 until no paint residue is visible.
- 6. Thorough Cleaning:** For a more thorough cleaning, especially after using thicker paints or if clogging occurs, disassemble the airbrush components (nozzle, needle, cap) and clean them individually using the provided cleaning brushes and needles.
- 7. Lubrication:** Occasionally apply a small amount of airbrush lubricant to the needle packing and trigger mechanism to ensure smooth operation.

Important: Never force the needle into the airbrush. If resistance is felt, re-check for blockages or misalignment.

6. TROUBLESHOOTING

Problem	Possible Cause	Solution
No air from nozzle	Compressor off, hose disconnected, nozzle clogged.	Check power, reconnect hose, clean nozzle.
No paint flow / Splattering	Paint too thick, nozzle clogged, needle bent, air pressure too low.	Dilute paint, clean nozzle/needle, replace bent needle, increase air pressure.
Air bubbles in paint cup	Nozzle cap loose, nozzle clogged, bent nozzle.	Tighten nozzle cap, clean nozzle, replace nozzle.
Compressor not turning on	Power adapter disconnected, power switch off, faulty adapter/compressor.	Check power connections, ensure switch is ON, contact support if issue persists.








7. SPECIFICATIONS

- Product Dimensions:** 4.9 x 4.9 x 2.9 inches
- Item Model Number:** AK2-2
- Item Weight:** 2.09 pounds
- Manufacturer:** Oasser
- Country of Origin:** China
- Max Pressure:** 40 PSI
- Max Airflow:** 10.5 L/min
- Nozzle Sizes Included:** 0.2mm, 0.3mm, 0.5mm

8. WARRANTY AND SUPPORT

For warranty information, technical support, or any inquiries regarding your Oasser Airbrush Kit, please contact Oasser customer service through the retailer where the product was purchased or visit the official Oasser website for contact details.

Related Documents - AK2-2

<div> <small>Model: AK1-001</small></div> <div></div>	<p>Oasser AK1 Airbrush Set User Manual</p> <p>User manual for the Oasser AK1 Airbrush Set, detailing its features, operation, maintenance, and safety precautions. Includes information on the airbrush, compressor, and accessories.</p>
<div> <small>Model: FC810</small></div> <div></div>	<p>Oasser Portable Electric Air Compressor Operation Manual FC810</p> <p>Comprehensive operation manual for the Oasser Portable Electric Air Compressor, Model FC810. Includes setup, safety guidelines, technical specifications, and troubleshooting.</p>
<div><div>Attention</div><p>Dear Amazon Customer, thanks for buying Oasser Electric Air Compressor with built-in battery. Prior to use, please read the book and don't follow it as to prevent any mistakes in use and damage due to improper operation. We appreciate it if you could read this attention for a few minutes.</p><ul style="list-style-type: none">❗ Please charge the product battery to the fullest prior to the very first use to "wake up" the battery and make sure the battery is all to best performance.❗ Don't make the air compressor work when it is being charged with home charger (except that it is connected to 110V power).❗ Please prevent the product from being over-charged. When the indicating light on the charger turns red to green, it means that the battery is fully charged. Please cut off the power in time.❗ Please charge the product battery to the fullest after every use so as to protect the battery from being over-discharged when it is placed for quite some time without any use. (The charger is equipped with low-voltage protection, so when the battery voltage is too low, the battery may not be charged with the charger).❗ Please see to it that the product should be charged every one month when it is placed for a long time without any use.</div> <div></div>	<p>Oasser Electric Air Compressor Safety and Usage Guide</p> <p>Read essential safety instructions and usage tips for your Oasser Electric Air Compressor to ensure proper operation, battery maintenance, and longevity. Includes contact information for support.</p>
<div> <small>20V Air Compressor</small></div> <div></div>	<p>Oasser P2S 20V Air Compressor Operation Manual</p> <p>Comprehensive operation manual for the Oasser P2S 20V portable air compressor, covering installation, technical specifications, operation steps, and troubleshooting.</p>



OASSER
PIC Electric Tire Inflator
Model: MS22C-203B

[Oasser MS22C-203B PIC Electric Tire Inflator User Manual](#)

Comprehensive user manual for the Oasser MS22C-203B PIC Electric Tire Inflator, covering features, instructions, safety precautions, and maintenance. Learn how to use your tire inflator efficiently and safely.