

## EUHOMY PAC003-8K

# EUHOMY 8000 BTU Portable Air Conditioner

Model: PAC003-8K - User Manual

## INTRODUCTION

Thank you for choosing the EUHOMY 8000 BTU Portable Air Conditioner. This appliance is designed to provide efficient cooling, dehumidification, and air circulation for your indoor spaces. Please read this manual thoroughly before operation to ensure proper use, maintenance, and safety.

## SAFETY INFORMATION

Always follow basic safety precautions when using electrical appliances to reduce the risk of fire, electric shock, and injury.

- Ensure the power supply matches the voltage specified on the unit's rating label.
- Do not operate the unit with a damaged cord or plug.
- Keep the air intake and exhaust vents clear of obstructions.
- Do not insert objects into the air outlet.
- Unplug the unit before cleaning or servicing.
- This appliance is not intended for use by persons (including children) with reduced physical, sensory or mental capabilities, or lack of experience and knowledge, unless they have been given supervision or instruction concerning use of the appliance by a person responsible for their safety.

## PRODUCT OVERVIEW

The EUHOMY Portable Air Conditioner is a versatile 3-in-1 unit offering cooling, dehumidification, and fan functions. It features a compact design with universal wheels for easy mobility.



Figure 1: Main unit and included accessories (exhaust hose, window kit, remote control).

**8000** BTU  
Portable Air Conditioner

**350 Sq.ft** | **4-in-1** | **24 H**  
Effective area | Operation | Timer

A woman is sitting on a white sofa, reading a book. The background is a modern living room with a large window and a white curtain. A blue light effect and snowflake graphics are shown emanating from the air conditioner unit, which is partially visible in the background.

## SETUP AND INSTALLATION

---

Follow these steps for quick and easy setup of your portable air conditioner.

1. **Positioning the Unit:** Place the unit on a flat, stable surface. Ensure there is at least 20 inches (50 cm) of space around the unit for proper airflow. The unit is equipped with 4 universal wheels for easy movement.
2. **Window Kit Assembly:**
  - Extend the adjustable window kit to fit your window opening.
  - Install the assembled window kit securely in the window.
  - Insert the window kit adapter into the opening in the window kit.

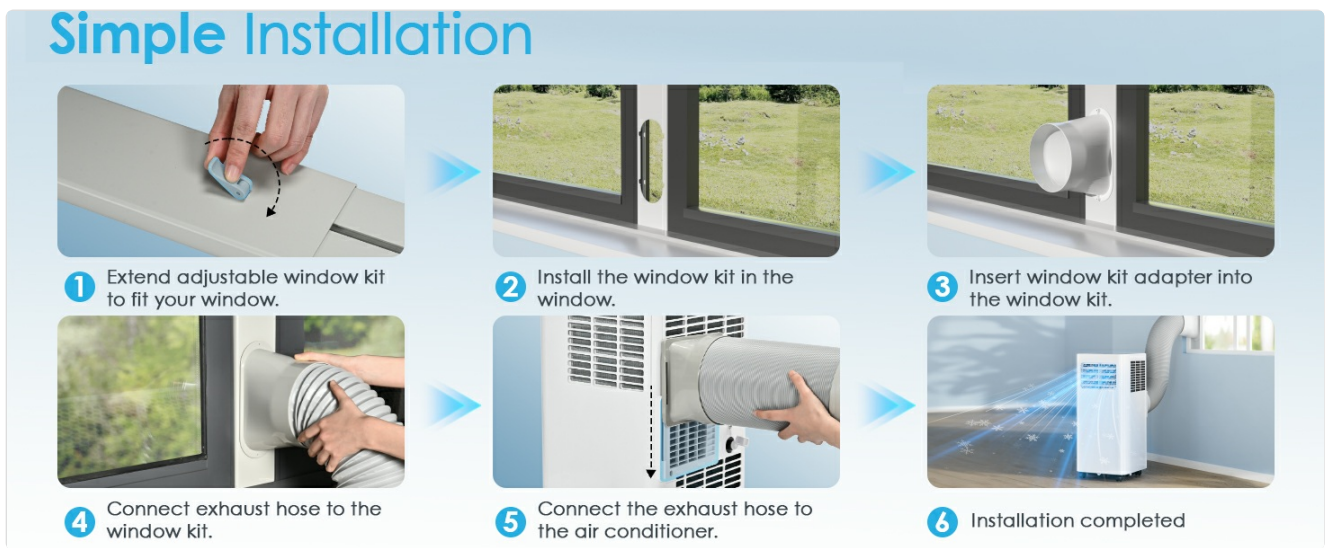


Figure 3: Simple installation process for the exhaust hose and window kit.

3. **Exhaust Hose Connection:**
  - Connect one end of the exhaust hose to the hose connector.
  - Connect the other end of the exhaust hose to the window kit adapter.
  - Connect the hose connector to the exhaust port on the back of the air conditioner unit. Ensure all connections are secure to prevent air leakage.
4. **Power Connection:** Plug the power cord into a grounded electrical outlet.

## OPERATING THE UNIT

---

Your EUHOMY Portable Air Conditioner can be operated using the LED touch control panel on the unit or the included remote control.



Figure 4: Control panel and remote control for easy operation.

## Control Panel and Remote Functions:

- **POWER:** Turns the unit on or off.
- **MODE:** Cycles through operating modes: Cool, Dry, Fan, Sleep.
- **TEMP UP/DOWN (▲/▼):** Adjusts the desired temperature (60°F to 86°F).
- **SPEED:** Adjusts fan speed (High/Low).
- **TIMER:** Sets the 24-hour on/off timer.

## Operating Modes:

- **Cool Mode:** Provides powerful cooling. Set your desired temperature. The unit will cool the room to the set temperature.
- **Fan Mode:** Circulates air without cooling. Choose between High or Low fan speed for air circulation.
- **Dry Mode (Dehumidifier):** Removes excess moisture from the air. In this mode, a drainage pipe must be connected for continuous drainage. The unit can remove up to 44 pints of moisture per day.
- **Sleep Mode:** Reduces noise level to approximately 52dB for quiet operation during sleep. The fan speed automatically reduces. The unit will maintain a comfortable temperature while minimizing disturbance.

## MAINTENANCE

---

Regular maintenance ensures optimal performance and extends the lifespan of your unit.

### Cleaning the Air Filter:

The air filter is detachable and washable. Clean the filter every two weeks or more frequently depending on usage and air quality.

1. Turn off and unplug the unit.
2. Remove the air filter from the back of the unit.
3. Wash the filter with warm, soapy water. Rinse thoroughly.
4. Allow the filter to air dry completely before reinserting it into the unit.





Figure 5: The removable and washable air filter helps maintain air quality.

## Draining Water:

The unit has an internal water collection tank. When the tank is full, the unit will stop operating and display a 'Full' indicator. You will need to drain the water manually.

- Turn off and unplug the unit.
- Place a shallow pan or bucket under the drainage port at the back of the unit.
- Remove the drain plug to allow water to flow out.
- Once drained, replace the drain plug securely.
- For continuous drainage in Dry mode, connect the provided drainage pipe to the drainage port.

## TROUBLESHOOTING

If you experience issues with your unit, refer to the following common problems and solutions.

| Problem                         | Possible Cause   | Solution   |
|---------------------------------|--|--|
| Unit does not turn on.          | No power supply; Power cord not plugged in; Circuit breaker tripped.                               | Check power outlet; Ensure plug is fully inserted; Reset circuit breaker.  |
| Unit does not cool effectively. | Air filter is dirty; Room size too large; Doors/windows open; Exhaust hose not properly installed. | Clean air filter; Ensure unit is suitable for room size (up to 350 sq.ft); Close all doors and windows; Check exhaust hose for proper connection and no kinks. |
| Water 'Full' indicator is on.   | Water tank is full.  | Drain the water from the unit.   |
| Unit is noisy.                  | Unit not on a level surface; Fan speed too high.   | Place unit on a flat surface; Select a lower fan speed (e.g., Sleep mode).   |

## SPECIFICATIONS

| Feature | Detail |
|---------|--------|
|---------|--------|

| Feature             | Detail   |
|---------------------|--|
| Model Number        | PAC003-8K  |
| Cooling Capacity    | 8000 BTU   |
| Coverage Area       | Up to 350 Sq.Ft  |
| Modes               | Cool, Dry, Fan, Sleep  |
| Moisture Removal    | 44 Pints/Day (Dry Mode)  |
| Noise Level         | 52 dB (Sleep Mode)   |
| Temperature Range   | 60°F - 86°F  |
| Voltage             | 115 Volts  |
| Product Dimensions  | 11.4"D x 12"W x 26.7"H   |
| Item Weight         | 40.8 pounds  |
| Included Components | Exhaust Hose, Window Kit Adapter, Hose Connector, Adjustable Window Kit, Drainage Pipe, Remote Control |

## WARRANTY AND SUPPORT

Your EUHOMY Portable Air Conditioner comes with a **1-Year Manufacturer Warranty**. For technical support, troubleshooting assistance, or warranty claims, please contact EUHOMY customer service. Refer to the contact information provided with your product packaging or visit the official EUHOMY website.

**Online Resources:** You may find additional support and FAQs on the [EUHOMY Store on Amazon](#).