

## Homeiju KJL8010

# Homeiju Kitchen Organizer and Storage Cart (Model KJL8010) - 4 Tier with Drawer User Manual

Brand: Homeiju | Model: KJL8010

## INTRODUCTION

This manual provides instructions for the assembly, operation, and maintenance of your Homeiju 4-Tier Kitchen Organizer and Storage Cart, Model KJL8010. Please read these instructions carefully before assembly and use to ensure safe and efficient operation and to maximize the product's lifespan.

## IMPORTANT SAFETY INFORMATION

Please observe the following safety guidelines:

- Ensure all parts are properly secured before use.
- Do not allow children to play on, with, or around the cart.
- Do not overload the shelves or baskets. Distribute weight evenly to maintain stability.
- Use on a flat, stable surface to prevent tipping.

## PACKAGE CONTENTS

Verify that all components are present before beginning assembly. While specific part names are not provided, the package should include:

- Main frame components (metal posts, crossbars)
- Top wooden panel
- Bottom wooden shelf
- Fabric drawer with handle
- Two pull-out wire baskets
- Four swivel casters (wheels)
- Assembly hardware (screws, wrench, etc.)
- Instruction sheet

## SETUP AND ASSEMBLY

---

Assembly is required for this product. Follow these general steps. For detailed, step-by-step instructions, refer to the included assembly guide.

1. **Unpack Components:** Carefully remove all parts from the packaging and lay them out on a clean, soft surface to prevent scratches.
2. **Attach Casters:** Secure the four swivel casters to the bottom of the main frame posts. Ensure they are tightened securely.
3. **Assemble Frame:** Connect the metal frame posts using the provided crossbars and hardware. Do not fully tighten screws until all major components are in place.
4. **Install Shelves:** Place the bottom wooden shelf onto the designated frame supports. Install the top wooden panel.
5. **Insert Baskets:** Slide the two pull-out wire baskets into their respective slots on the frame. The height of these baskets may be adjustable.
6. **Assemble Drawer:** Construct the fabric drawer and insert it into the top compartment. Attach the drawer handle.
7. **Final Tightening:** Once all components are in place and aligned, securely tighten all screws and fasteners.



Fully assembled Homeiju 4-Tier Kitchen Organizer and Storage Cart with a fabric drawer, two pull-out baskets, and a bottom shelf, ready for use.

# Ideal Size





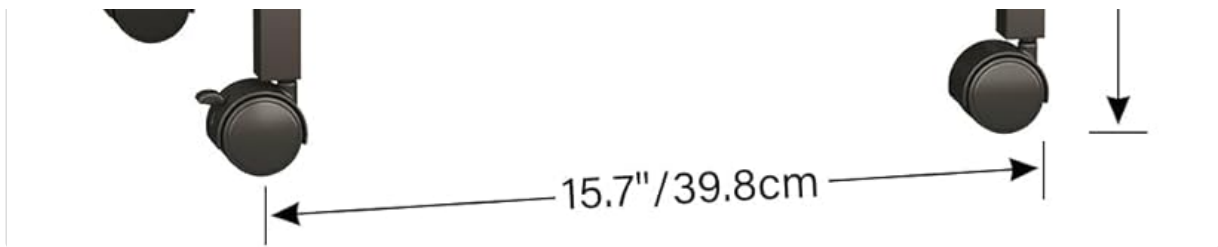


Diagram showing the dimensions of the cart: 11.7 inches deep, 15.7 inches wide, and 31.8 inches high.



Illustration demonstrating the height-adjustable feature of the pull-out baskets, allowing customization for various item sizes.

## OPERATING INSTRUCTIONS

### Mobility

The cart is equipped with 360-degree swivel casters for easy movement. Use the integrated side handle to push or pull the cart to your desired location. Lock the casters to keep the cart stationary.

### Storage Utilization

- **Top Panel:** Use the top wooden panel for placing small appliances, decor, or frequently accessed items.



- **Fabric Drawer:** The fabric drawer provides enclosed storage for smaller items, such as utensils, snacks, or office supplies.
- **Pull-Out Baskets:** The two wire baskets can be pulled out for easy access to stored items like fruits, vegetables, or pantry staples. Their height can be adjusted during assembly to accommodate different item sizes.
- **Bottom Shelf:** The bottom wooden shelf offers additional storage for larger items or containers.



Convenient Side Handle



Fabric Drawer



2 Sliding Baskets



360° Swivel Casters

Detailed view of key features: the convenient side handle for mobility, the fabric drawer, the sliding baskets, and the 360-degree swivel casters.

# Multifunctional Kitchen Storage Cart



The cart positioned in a kitchen, demonstrating its use for storing fruits, vegetables, and other kitchen essentials, optimizing counter space.



## Mobile Laundry Storage Cart



The cart used in a laundry room, showcasing its versatility for organizing laundry detergents, softeners, and other supplies.



# Height Adjustable Basket



The cart functioning as a snack station in a living area, highlighting the fabric drawer for small items and baskets for snacks.

## CARE AND MAINTENANCE

- **Cleaning:** Wipe down metal and wooden surfaces with a soft, damp cloth. Avoid abrasive cleaners or harsh chemicals that may damage the finish.
- **Fabric Drawer:** The fabric drawer can be spot cleaned with a mild detergent and water. Allow to air dry completely.
- **Casters:** Periodically check casters for debris (hair, lint) and clean as needed to ensure smooth rolling.
- **Hardware:** Occasionally check all screws and fasteners to ensure they remain tight. Retighten if necessary.

## TROUBLESHOOTING

- **Cart is unstable:** Ensure all assembly screws are fully tightened. Verify the cart is on a flat, level surface. Distribute weight evenly across shelves.
- **Casters not rolling smoothly:** Check for debris (hair, lint) wrapped around the caster wheels. Clean as necessary. Ensure caster locks are disengaged.

- **Drawer not sliding smoothly:** Check for obstructions in the drawer glides. Ensure the drawer is correctly inserted and not overloaded.

## PRODUCT SPECIFICATIONS

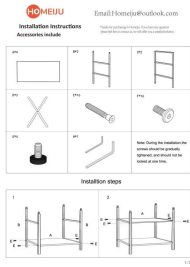
Feature	Detail
Product Dimensions	11.7"D x 15.7"W x 31.8"H
Shelf Type	Tiered Shelf
Frame Material	Metal, Wood
Brand	Homeiju
Color	Vintage
Furniture Finish	Distressed
Style	4 Tier with Drawer
Assembly Required	Yes
Number of Shelves	2 (wooden shelves)
Manufacturer	Homeiju
UPC	721691279048
Item Weight	10 pounds
Model Number	KJL8010
Date First Available	July 2, 2025

## WARRANTY AND CUSTOMER SUPPORT

Specific warranty details are not provided in this manual. For warranty information, product support, or to report any issues, please contact Homeiju customer service directly. Refer to your purchase documentation or the Homeiju brand store on Amazon for contact details.

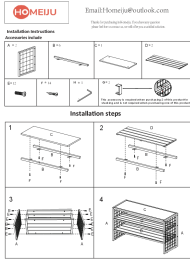
Homeiju Store Link: [Visit the Homeiju Store](#)

### Related Documents - KJL8010



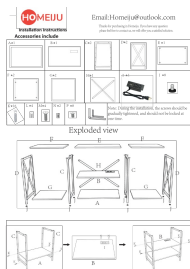
## HOMEIJU 4-Tier Book Shelf Installation Guide

Step-by-step instructions for assembling the HOMEIJU 4-Tier Book Shelf, including a detailed parts list and assembly diagrams described textually. Learn how to build your stylish and functional bookcase for living room, kitchen, or office.



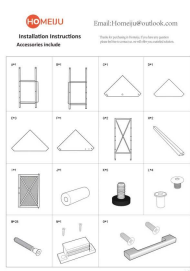
## Homeiju Shoe Bench Installation Instructions

Step-by-step guide for assembling the Homeiju 3-Tier Shoe Rack, including a list of accessories and detailed visual instructions.



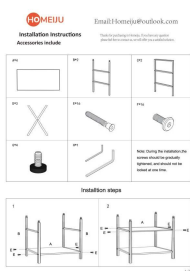
## HOMEIJU TV Stand Installation Instructions

Step-by-step guide for assembling the HOMEIJU TV Stand with power outlets and open storage shelves. Includes an exploded view of parts and assembly diagrams.



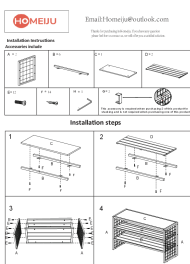
## Homeiju 6-Tier Corner Bookshelf Installation Instructions

Detailed installation guide for the Homeiju 6-Tier Corner Bookshelf, including parts list and step-by-step assembly instructions for your living room or small space.



## HOMEIJU 4-Tier Book Shelf Installation Guide

Step-by-step instructions for assembling the HOMEIJU 4-Tier Book Shelf, including a detailed parts list and assembly diagrams described textually. Learn how to build your stylish and functional bookcase for living room, kitchen, or office.



## Homeiju Shoe Bench Installation Instructions

Step-by-step guide for assembling the Homeiju 3-Tier Shoe Rack, including a list of accessories and detailed visual instructions.