

TYMO HC305GM

TYMO STYLUX 1.5 Inch Thermal Brush User Manual

Model: HC305GM

1. INTRODUCTION

The TYMO STYLUX 1.5 Inch Thermal Brush is a versatile hair styling tool designed to straighten, volumize, and curl hair with ease. Featuring Flexi-Fit technology and a T-Gloss keratin coating, it aims to provide smooth, shiny results while minimizing hair damage. This manual provides essential information for safe and effective use of your thermal brush.

2. IMPORTANT SAFETY INFORMATION

WARNING: To reduce the risk of burns, electrocution, fire, or injury to persons:

- Always unplug the appliance immediately after using.
- Do not use while bathing or in a shower.
- Do not place or store appliance where it can fall or be pulled into a tub or sink.
- Do not place in or drop into water or other liquid.
- If an appliance falls into water, unplug it immediately. Do not reach into the water.
- This appliance is not a hair dryer brush, blow dryer, or hot air brush, and does not possess hair drying functions. It must be used on already dry hair.
- Keep away from water.
- Do not use this appliance near bathtubs, showers, basins or other vessels containing water.

Read all instructions before using this appliance.

3. PRODUCT FEATURES

- **Flexi-Fit Technology:** Adjustable nylon bristles minimize hair pulling and ensure even hair distribution.
- **T-Gloss Keratin Coating:** Minimizes cuticle damage and adds shine.
- **Dual PTC Heaters:** Ensures fast heat-up (20 seconds) and consistent, precise heat.
- **3-Level Temperature Adjustment:** Caters to various hair types (2A to 4A).
- **30-Minute Auto Shut-off:** Enhances safety.
- **Dual Voltage (100V–240V):** Ideal for travel.

- **360° Swivel Cord:** Allows for flexible styling from any angle.
- **Lightweight Design:** Weighs approximately 0.49 lb (15.52 ounces).
- **Temperature Memory Function:** Remembers your last used temperature setting.



Figure 1: TYMO STYLUX 1.5 Inch Thermal Brush, Gold.

4. SETUP AND INITIAL USE

1. **Unboxing:** Carefully remove the thermal brush and all accessories from the packaging.
2. **Inspect:** Check the appliance for any signs of damage. Do not use if damaged.
3. **Power Connection:** Plug the thermal brush into a suitable electrical outlet. Ensure the voltage is compatible (100V-240V).

4. **Power On:** Long press the power button for 2 seconds to turn on the device.
5. **Temperature Selection:** Press the power button briefly to cycle through the 3 temperature settings.
 - White Light: 160°C / 320°F
 - Yellow Light: 180°C / 360°F
 - Orange Light: 200°C / 395°F

The indicator light will stop flashing when the set temperature is reached.

6. **Heat-Up Time:** The brush heats up in approximately 20 seconds.



Figure 2: Temperature adjustment and power control.

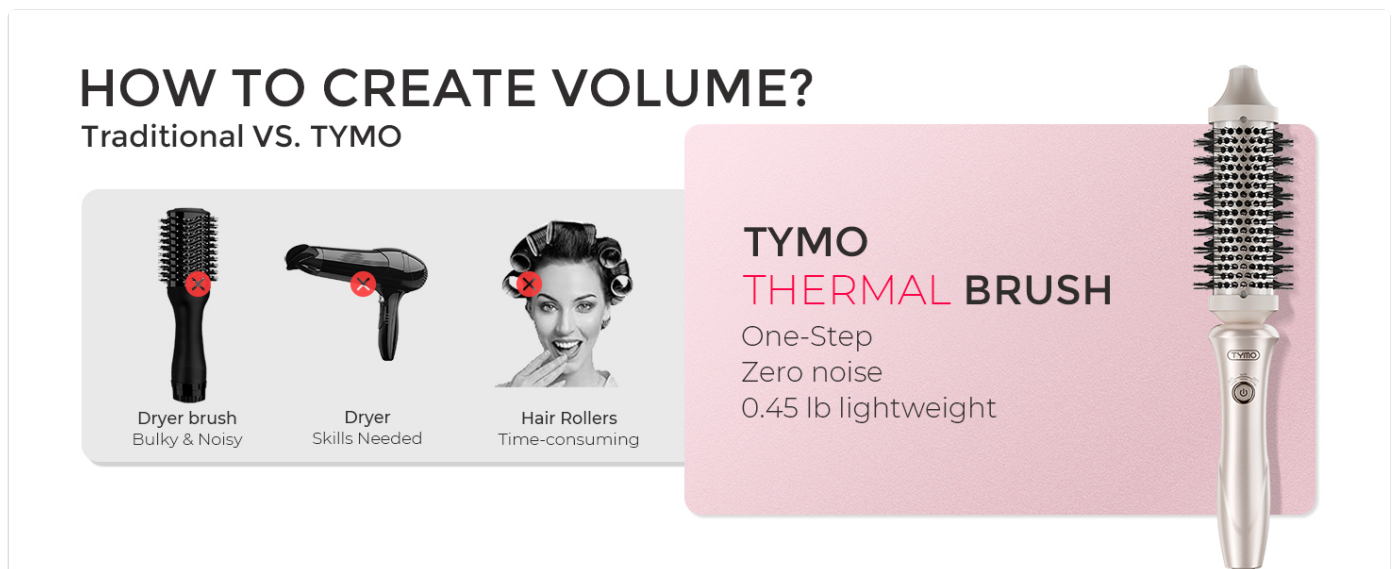


Figure 3: Illustrates the 20-second fast heat-up feature.

5. OPERATING INSTRUCTIONS

Ensure your hair is completely dry before using the TYMO STYLUX Thermal Brush. This product is not a hair dryer.

5.1. For Straightening and Smoothness

1. **Section Hair:** Divide your dry hair into manageable sections, about 1-1.5 inches wide.
2. **Glide:** Starting at the root of a section, slowly glide the brush downwards, allowing the bristles to detangle and

straighten the hair. Ensure hair is spread evenly on the brush.

3. **Repeat:** Repeat on all sections until desired straightness and smoothness are achieved.

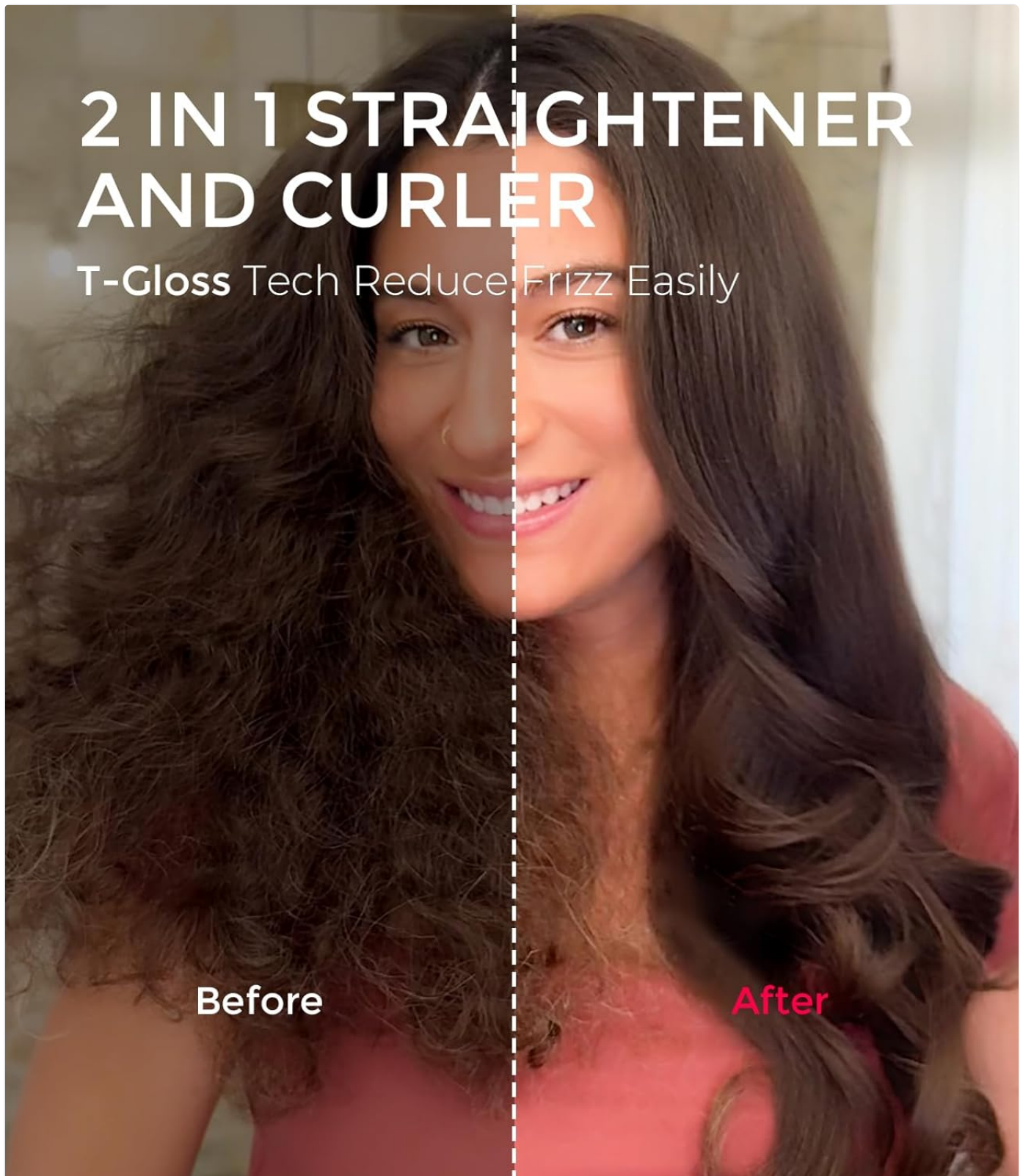


Figure 4: Visual comparison of hair before and after using the thermal brush for straightening.

5.2. For Volumizing and Bouncy Blowouts

1. **Section Hair:** Take a section of dry hair.
2. **Lift and Roll:** Place the brush at the root of the section, lift the hair, and slowly roll the brush downwards and outwards to create volume and a bouncy effect.
3. **Hold and Release:** For more defined volume, hold the brush in place for a few seconds before slowly releasing.

ONE STEP BOUNCY BLOWOUT

No air volumizing
Forget complex wet-to-dry skill



Figure 5: Achieving a bouncy blowout with the thermal brush.

5.3. For Creating C-Curls or Loose Curls

1. **Section Hair:** Isolate a 1-1.5 inch section of hair and spread it evenly on the brush.
2. **Glide and Twist:** Starting at the root, slowly glide the brush down the hair. As you reach the ends, twist the brush to create C curls.
3. **Repeat:** Repeat the twist for the desired result if the C curls are not satisfying.



TYMO STYLUX THERMAL BRUSH

0 AIR All-in-One Styler
Straighten, Volumize & Curl



Figure 6: Detailed steps for creating C-curls with the thermal brush.

Your browser does not support the video tag.

Video 1: Demonstration of relaxing curls for short hair using the 1.5 inch TYMO STYLUX thermal brush. This video shows the brush being used to smooth and style short hair into soft curls.

Your browser does not support the video tag.

Video 2: Demonstration of achieving shiny curls for frizzy hair with the TYMO STYLUX thermal brush. This video illustrates how the brush can transform frizzy hair into smooth, shiny curls.

6. MAINTENANCE AND CARE

- **Cleaning:** Ensure the appliance is unplugged and completely cool before cleaning. Use a soft, damp cloth to wipe down the barrel and handle. Do not use abrasive cleaners or immerse the appliance in water.
- **Hair Removal:** Regularly remove any hair tangled in the bristles to maintain optimal performance.
- **Storage:** Store the thermal brush in a cool, dry place, away from moisture and direct sunlight. Do not wrap the cord around the appliance as this can damage the cord.

7. TROUBLESHOOTING

Problem	Possible Cause	Solution
Appliance does not turn on.	Not plugged in correctly; Power outlet issue; Appliance malfunction.	Ensure the plug is fully inserted into a working outlet. Try a different outlet. If still not working, contact customer support.
Brush not heating up.	Temperature setting too low; Internal heating element issue.	Check the temperature setting and increase if necessary. Allow 20 seconds for heat-up. If problem persists, contact customer support.
Hair gets tangled in bristles.	Too much hair per section; Hair not properly detangled before use.	Use smaller sections of hair. Ensure hair is thoroughly detangled before styling.
Hair not styling effectively.	Incorrect temperature setting for hair type; Hair is damp; Improper technique.	Ensure hair is completely dry. Adjust temperature to a higher setting if needed. Review operating instructions for proper technique.

8. SPECIFICATIONS

- **Model Number:** HC305GM
- **Dimensions:** 3.35 x 14 x 2.44 inches
- **Weight:** 15.52 ounces (approx. 0.49 lb)
- **Color:** Gold
- **Material:** Plastic
- **Wattage:** 78 watts
- **Power Source:** Corded Electric
- **Voltage:** Dual Voltage (100V-240V)
- **Auto Shut-off:** 30 minutes
- **Heat-up Time:** 20 seconds

9. WARRANTY AND SUPPORT

For warranty information, product support, or to inquire about replacement parts, please contact TYMO customer service. Keep your purchase receipt as proof of purchase.

You can visit the official TYMO store for more information: [TYMO Official Store](#)