

REVODATA I704-3-P-HSV6

Product Instruction Manual

REVODATA 5MP POE IP MINI CAMERA

Model: I704-3-P-HSV6

1. Introduction

This manual provides detailed instructions for the installation, operation, and maintenance of your REVODATA 5MP POE IP Mini Camera. Please read this manual thoroughly before using the product to ensure proper setup and functionality.

2. Safety Information

- Ensure the power supply meets the camera's requirements (48V POE or 12V 2A DC).
- Do not expose the camera to extreme temperatures outside its operating range (-25°C to 60°C).
- Avoid direct exposure to strong light sources, which may damage the image sensor.
- Do not attempt to disassemble or modify the camera. Refer all servicing to qualified personnel.
- Keep out of reach of children.

3. What's in the Box

Verify that all components are present:

- 1 x REVODATA 5MP POE IP Mini Camera
- 1 x User Manual
- 1 x Screw Set
- 1 x Waterproof Cap

POE Support



Built-in POE module, support 48V 802.3af POE function (Power Over Ethernet).

H.265/H.264 dual encoding. Motion detection only records when motion is detected, which is easier to save storage space.

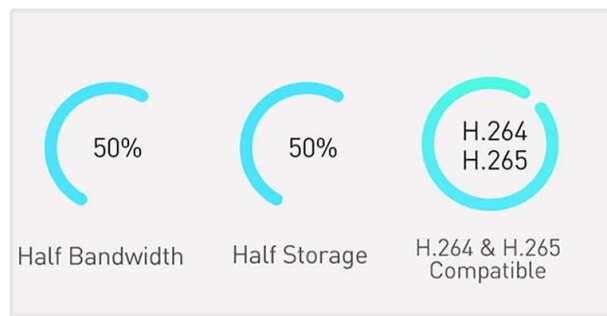


Image: Package contents showing the camera, user manual, screw set, and waterproof cap.

4. Product Overview

The REVODATA 5MP POE IP Mini Camera is a compact and robust security solution designed for both indoor and outdoor surveillance. It features a 5-megapixel sensor, 940nm invisible infrared LEDs for night vision, and supports Power over Ethernet (POE) or DC power.



Image: Front view of the camera, highlighting its compact size and the arrangement of the lens and invisible infrared LEDs.

4.1 Key Features

- **HD 5MP Resolution:** Captures clear images and details with a 5.0-megapixel 1/3-inch CMOS sensor at 25 frames per second.
- **Invisible Night Vision:** Equipped with 10 x 940nm IR LEDs for clear night vision in complete darkness, invisible to the naked eye.
- **IP65 Waterproof:** Suitable for indoor and outdoor installation, ensuring stable operation in various weather conditions.
- **POE and DC Support:** Can be powered via 48V 802.3af Power over Ethernet (POE) or a standard 12V 2A DC power supply.
- **H.265/H.264 Dual Encoding:** Efficient video compression saves bandwidth and storage space.
- **Motion Detection:** Records only when motion is detected, optimizing storage.
- **Remote Viewing:** Access surveillance images remotely via the "Linklemo" app (iOS/Android) or VMS software (Windows).

5 MP POE Security IP Camera



5MP
HD

940nm LED



H.265/H.264



Waterproof
(IP65)



POE



IR Night Vision
(10 pcs LED)



3.6mm lens



Detection Alarm



P2P Remote View



80° FOV

Image: Visual representation of the camera's main features, such as H.265/H.264 encoding, IP65 waterproofing, POE support, and invisible night vision.

5. Setup and Installation

5.1 Mounting the Camera

The camera features an adjustable mounting bracket for flexible installation on ceilings or walls.

1. Choose a suitable location for optimal surveillance coverage.
2. Use the provided screw set to securely attach the mounting bracket to the desired surface.
3. Adjust the camera angle as needed using the bracket.

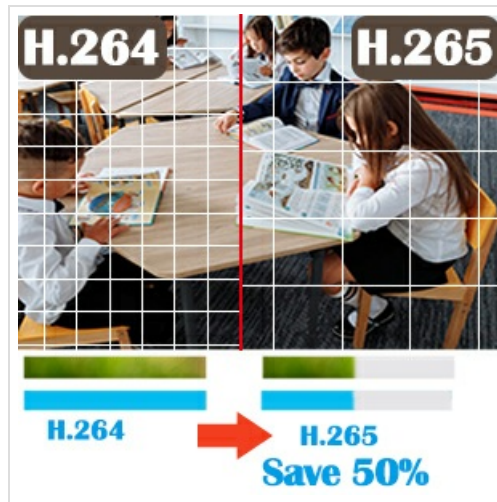


Image: Detailed view of the camera's dimensions and connection ports, including the PoE LAN port and extra power port.

5.2 Powering the Camera

The camera supports two power options:

- **Power over Ethernet (POE):** Connect an Ethernet cable from a POE-enabled switch or NVR to the camera's RJ45 port. This provides both power and data connectivity.
- **DC Power:** If POE is not available, connect a 12V 2A DC power adapter (not included) to the auxiliary power interface.



Image: Illustration of POE connectivity, demonstrating how a single cable provides both power and data to the camera.

5.3 Network Connection

Connect the camera to your network via an Ethernet cable. The camera will obtain an IP address automatically via DHCP. You can use network scanning tools (e.g., Zenmap for Linux users) to discover the camera's IP address on your network.

6. Operating the Camera

6.1 Software Installation

To view and manage your camera, install the appropriate software:

- **Mobile App:** Download and install the "Linklemo" app from the App Store (iOS) or Google Play Store (Android).
- **PC Software:** For Windows computers, use the VMS software. (Note: Not compatible with MAC OS)

or Linux).

Linklemo APP View



VMS View

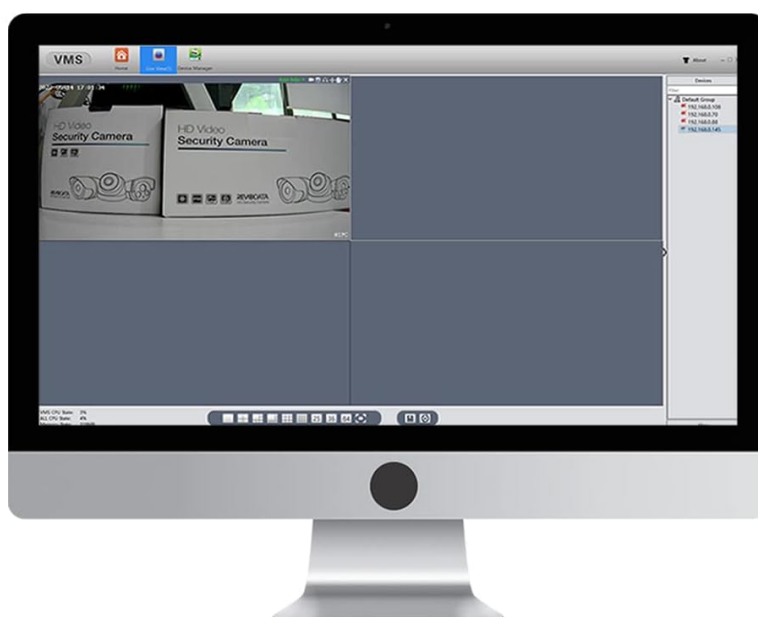


Image: Screenshots demonstrating the user interface of the Linklemo mobile application and the VMS software for PC, showing live camera views.

6.2 Remote Viewing

Once the camera is connected to your network and the software is installed, you can remotely view live feeds and playback recorded footage from anywhere with an internet connection.

1. Open the "Linklemo" app or VMS software.
2. Add your camera using its IP address or QR code (if available through the software).
3. Access live view and playback options.

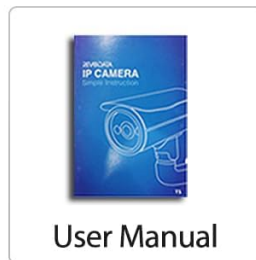
Notice: This device does not support Cloud Storage. Please do not purchase Cloud Storage from the "Linklemo" app.

6.3 Motion Detection and Alarms

The camera features motion detection to save storage space by recording only when movement is detected. When human movement is detected, you will receive an alarm message on your phone via the "Linklemo" app.



Package Including:



Note: This product do not including the power unit.

Image: Depiction of the motion detection alarm system, showing an alert notification on a smartphone when motion is detected by the camera.

6.4 Night Vision

The camera's built-in 940nm invisible infrared LEDs provide clear night vision without emitting visible red light, ensuring discreet surveillance in completely dark environments.



Image: A split image demonstrating the camera's performance in both day and night conditions, emphasizing the effectiveness of its invisible infrared night vision.

6.5 Video Encoding (H.265/H.264)

The camera supports H.265 and H.264 dual encoding. H.265 offers superior compression efficiency, requiring approximately half the bandwidth and storage space compared to H.264 for the same image quality.

**5MP/25fps frame rate to see more image information
keep an eyes on your home**



Image: A visual comparison illustrating the efficiency of H.265 encoding over H.264, highlighting significant savings in bandwidth and storage.

7. Maintenance

- **Cleaning:** Use a soft, dry cloth to clean the camera lens and body. Do not use harsh chemicals or abrasive cleaners.
- **Firmware Updates:** Periodically check with REVODATA support for available firmware updates to ensure optimal performance and security.
- **Environmental Protection:** While IP65 waterproof, avoid prolonged exposure to extreme weather conditions if possible to extend product lifespan.

8. Troubleshooting

Problem	Possible Cause	Solution
No image/power	No power supply or incorrect connection.	Ensure POE is active or 12V 2A DC adapter is correctly connected and functioning. Check Ethernet cable connection.
Cannot connect to network/app	Incorrect IP address, network issue, or software configuration.	Verify camera's IP address using a network scanner. Ensure camera and viewing device are on the same network. Reconfigure network settings in the app/software. Contact support for assistance with initial setup.
Time zone issues (e.g., stuck in +8 hour)	Outdated firmware.	Contact REVODATA support for the latest firmware update and instructions on how to apply it.
RTSP/ONVIF streams not accepting credentials	Firmware bug or incorrect security settings.	Ensure correct username/password. If issues persist, contact REVODATA support for firmware updates or specific configuration guidance.
Poor image quality	Dirty lens, insufficient lighting, or network bandwidth issues.	Clean the lens. Ensure adequate lighting for optimal performance. Check network connection stability and bandwidth.

9. Specifications

Feature	Detail
Model Name	I704-3-P-HSV6
Indoor/Outdoor Usage	Indoor, Outdoor
Video Capture Resolution	5MP (2880*1616P)
Photo Sensor Technology	CMOS (1/3-inch)
Frame Rate	25fps
Lens	3.6mm
Night Vision	10 x 940nm Invisible IR LEDs
Waterproof Rating	IP65
Power Source	Corded Electric (48V POE or 12V 2A DC)
Connectivity Technology	Ethernet
Video Encoding	H.265/H.264
Compatible Devices	Android, iOS, Windows
Mounting Type	Ceiling Mount
Material	Metal
Product Dimensions (L x W x H)	1.77 x 1.77 x 1.97 inches
Item Weight	7.04 ounces

10. Warranty and Support

For technical support, firmware updates, or any inquiries regarding your REVODATA product, please contact the seller directly. As noted in customer reviews, the seller provides prompt and helpful assistance, including manuals and utilities.

Refer to the "Sold by" section on the product page for contact information (e.g., yxhk_eu@outlook.com as mentioned in a review).

This product is covered by standard warranty terms as per the point of purchase. Please retain your proof of purchase for warranty claims.