

ZDMTDKXT W66

ZDMTDKXT Replacement Motherboard for Hutt W66 Window Cleaning Robot

Instruction Manual

1. INTRODUCTION

This manual provides essential information for the installation, operation, and maintenance of the ZDMTDKXT replacement motherboard compatible with the Hutt W66 Window Cleaning Robot. Please read this manual thoroughly before attempting any installation or repair to ensure proper function and safety.

2. SAFETY INFORMATION

Always observe the following safety precautions when handling electronic components:

- **Disconnect Power:** Ensure the window cleaning robot is completely powered off and unplugged from any power source before beginning installation.
- **Static Electricity:** Electronic components are sensitive to static electricity. Wear an anti-static wrist strap or frequently touch a grounded metal object to discharge static electricity before handling the motherboard.
- **Handle with Care:** Hold the motherboard by its edges to avoid touching components or connectors directly.
- **Tools:** Use appropriate, non-magnetic tools for disassembly and assembly.
- **Professional Installation:** If you are unsure about any step, seek assistance from a qualified technician.

3. PRODUCT OVERVIEW

This replacement motherboard is designed for the Hutt W66 Window Cleaning Robot. It serves as the central control unit, managing the robot's various functions.

Key Features:

- **Intelligent Control:** Equipped with a high-performance main control chip for accurate cleaning route planning and obstacle avoidance.
- **Stable Compatibility:** Designed for seamless integration with the robot's drive motor, vacuum fan, battery, and other components.
- **Convenient Function Expansion:** Supports voice control adaptation and includes reserved upgrade interfaces for future functionalities.

- **Energy-saving and Efficient:** Features an intelligent power management system to optimize power consumption and battery life.

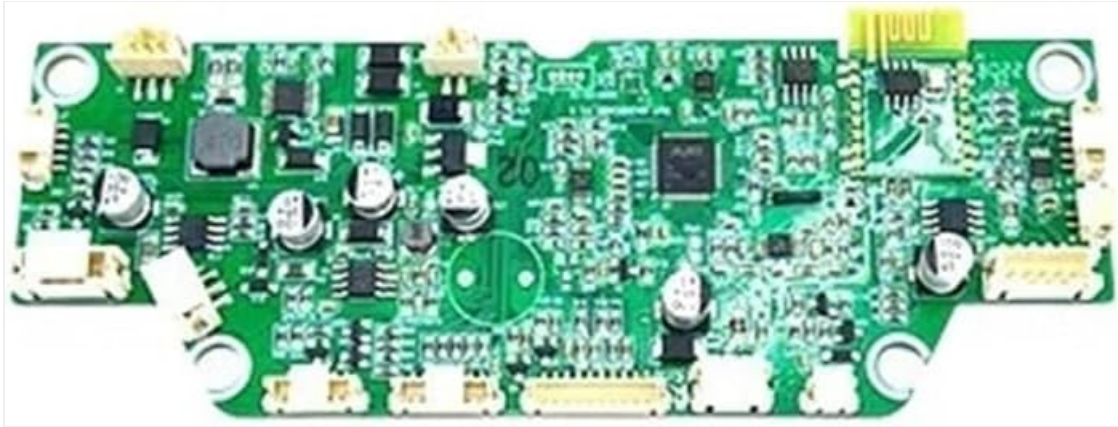


Figure 3.1: Top view of the ZDMTDKXT replacement motherboard, highlighting its intricate circuitry and connection points.

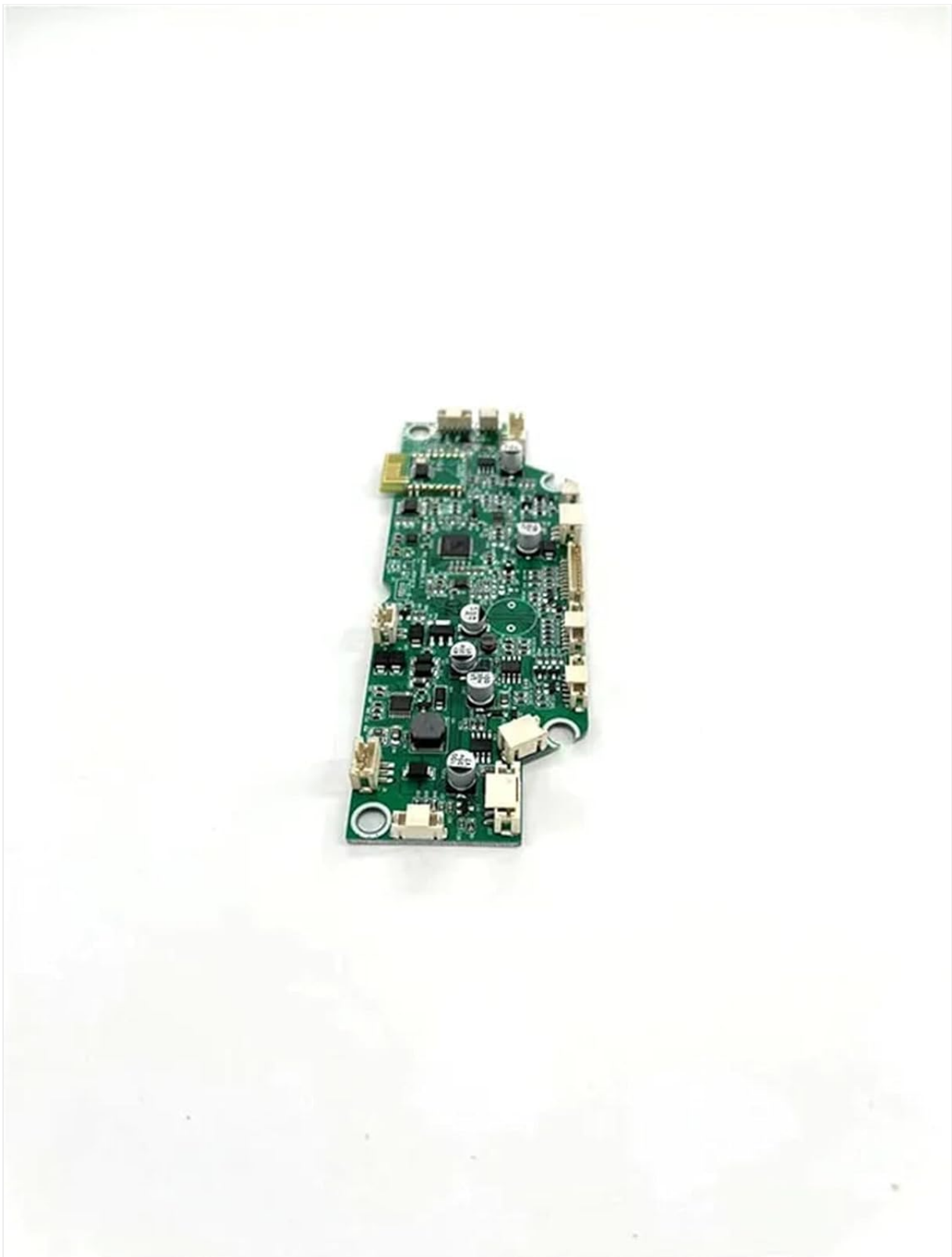


Figure 3.2: Side-angled view of the motherboard, illustrating its profile and connector arrangement.

4. SETUP AND INSTALLATION

This section outlines the general steps for replacing the motherboard. Specific disassembly instructions for the Hutt W66 robot may vary and should be referenced from the robot's original service manual if available.

Installation Steps:

1. **Preparation:** Ensure the robot is turned off and disconnected from all power sources. Place the robot on a clean, static-free work surface.
2. **Access the Motherboard:** Carefully disassemble the robot's casing to gain access to the existing

motherboard. Document the location and connection of all cables and components (e.g., take photos).

3. **Disconnect Old Motherboard:** Gently disconnect all cables, ribbons, and connectors from the old motherboard. Note their orientation and position.
4. **Remove Old Motherboard:** Unscrew any fasteners securing the old motherboard and carefully remove it from the robot's chassis.
5. **Install New Motherboard:** Position the ZDMTDKXT replacement motherboard in the chassis, ensuring it aligns correctly with mounting points. Secure it with the original fasteners.
6. **Reconnect Components:** Reconnect all cables, ribbons, and components to the new motherboard, matching them to their original positions. Refer to your documentation from step 2. Ensure all connections are firm and correctly oriented.
7. **Reassemble Robot:** Carefully reassemble the robot's casing, ensuring no cables are pinched and all screws are tightened appropriately.
8. **Initial Power-Up:** Connect the robot to power and perform a test run to verify functionality.



Figure 4.1: Detailed view of the motherboard's connectors, crucial for correct reassembly.

5. OPERATING INSTRUCTIONS

Once the ZDMTDKXT replacement motherboard is correctly installed, the Hutt W66 Window Cleaning Robot should function as intended. The motherboard manages the robot's core operations.

- **Power On:** Turn on the robot using its standard power button.
- **Self-Test:** The robot may perform a brief self-test upon startup. Observe for any error indicators.
- **Normal Operation:** Initiate a cleaning cycle as per the original Hutt W66 user manual. The new motherboard will control navigation, spraying, vacuuming, and obstacle detection.
- **Voice Control (if applicable):** If your robot supports voice control and the feature is enabled, test its responsiveness.

Refer to your Hutt W66 Window Cleaning Robot's original user manual for detailed operating procedures.

6. MAINTENANCE

The motherboard itself requires minimal maintenance. However, proper care of the robot can extend the life of all its components, including the motherboard.

- **Keep Dry:** Ensure the robot's internal components, especially the motherboard, remain dry. Avoid exposure to liquids.
- **Dust Removal:** Periodically clean the robot's interior (when disassembled for other maintenance) with compressed air or a soft brush to remove dust accumulation from the motherboard and other components.
- **Storage:** Store the robot in a cool, dry place when not in use.

7. TROUBLESHOOTING

If the robot does not function correctly after motherboard replacement, consider the following:

- **No Power:**
 - Check all power connections to the motherboard and battery.
 - Ensure the battery is charged.
- **Robot Not Moving/Responding:**
 - Verify all motor and sensor cables are securely connected to the motherboard.
 - Ensure no cables are pinched or damaged during reassembly.
- **Error Codes/Unusual Behavior:**
 - Refer to the original Hutt W66 user manual for specific error code interpretations.
 - Double-check all connections on the motherboard for proper seating.
- **Water Spray Malfunction:**
 - Inspect the water pump and spray nozzle connections to the motherboard.

If issues persist, it is recommended to consult a professional technician or contact the product seller for further assistance.

8. SPECIFICATIONS

Feature	Detail
Compatibility	Hutt W66 Window Cleaning Robot
Vacuum Component Type	Motor (Control)
Package Dimensions	1.18 x 0.79 x 0.39 inches
Item Weight	1.76 ounces
Manufacturer	hongxkai
ASIN	B0F222K7TM

9. WARRANTY AND SUPPORT

For warranty information, please refer to the terms provided by your original retailer or the manufacturer, ZDMTDKXT. Keep your purchase receipt as proof of purchase.

For technical support or further inquiries, please contact the seller through the platform where the product was purchased.