

Manuals+

[Q & A](#) | [Deep Search](#) | [Upload](#)

manuals.plus /

- › [Feasto](#) /
- › [Feasto 35" Outdoor Kitchen Sink Station User Manual](#)

Feasto KT2435B

Feasto 35" Outdoor Kitchen Sink Station User Manual

Model: KT2435B | Brand: Feasto

INTRODUCTION

This user manual provides essential information for the safe and efficient operation, maintenance, and troubleshooting of your Feasto 35" Outdoor Kitchen Sink Station. Please read this manual thoroughly before assembly and use to ensure proper functionality and longevity of the product.

PRODUCT OVERVIEW

The Feasto Outdoor Kitchen Sink Station is a versatile and portable unit designed to enhance your outdoor cooking and cleaning experience. It features a durable 304 stainless steel sink, ample prep space, and convenient storage options, making it an ideal addition to any outdoor living area.

Key Features

- **304 Stainless Steel Sink:** Durable, corrosion-resistant, and easy to clean, suitable for various outdoor applications.
- **Integrated Prep Space:** Provides a convenient and hygienic area for food preparation or additional workspace.
- **Hose Hookup:** Easily connects to a standard garden hose for a continuous water supply.
- **Mobile Design:** Equipped with four swivel wheels, two with locking mechanisms, for easy relocation and secure positioning.
- **Storage Shelves:** Two spacious lower shelves offer ample space for storing utensils, cleaning supplies, or other outdoor essentials.
- **Stability Hang Hooks:** Four S-hooks are included for organizing grilling tools, towels, or other accessories within easy reach.



Front view of the Feasto Outdoor Kitchen Sink Station, showcasing the sink, faucet, and lower storage shelf.



Detailed diagram showing the dimensions of the sink station, including overall length, width, height, and sink bowl measurements.

SETUP

Follow these steps for proper assembly and initial setup of your outdoor sink station. Ensure all parts are present and accounted for before beginning the assembly process.

Assembly Instructions

1. Step 1: Attach the Sink Drain Assembly.



Components of the sink drain assembly, including the water storage cover, stainless steel strainer, foam washer, rubber washer, stainless steel drain, and large plastic nut.

Insert the stainless steel strainer into the sink opening from the top. From underneath the sink, secure it with the large foam washer, large rubber washer, and large plastic nut. Tighten firmly by hand to create a watertight seal.

2. **Step 2: Install the Faucet.**

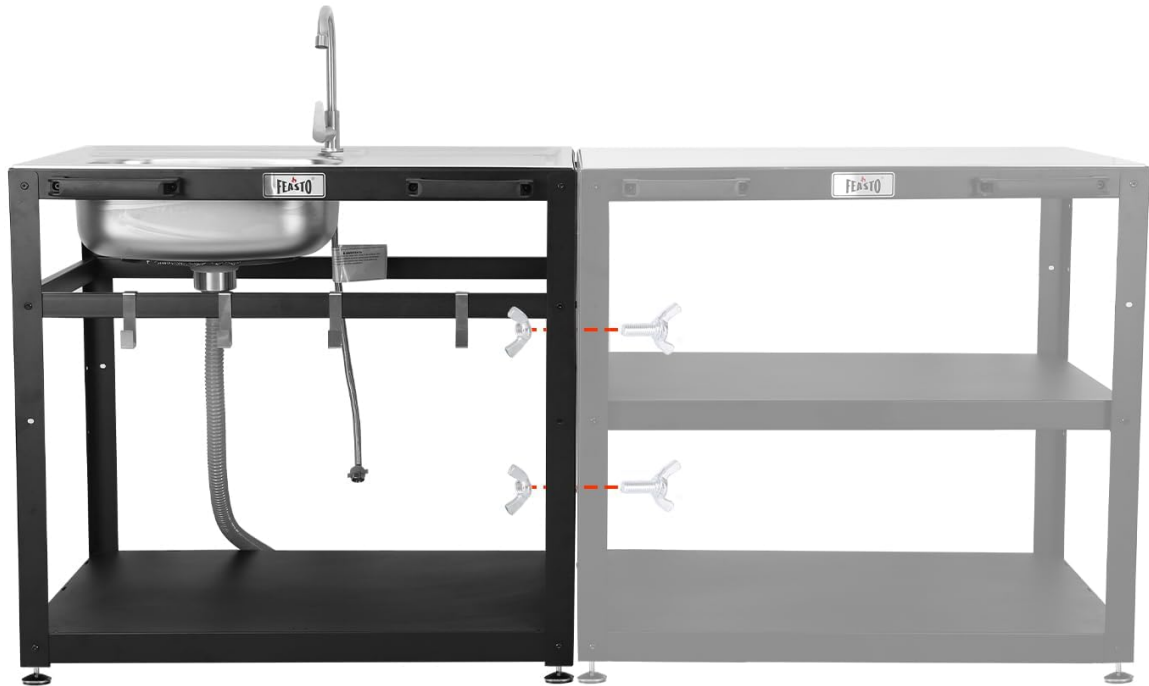


A person installing the faucet onto the sink station, showing the base and connection points.

Insert the faucet base into the designated hole on the sink top. Secure it from underneath with the provided mounting nut and washer. Ensure the faucet is oriented correctly before tightening.

3. Step 3: Connect Water Supply.

This outdoor sink unit can be used to add extra function and storage to Feasto kitchen island unit KT2435A.



KT2435B

KT2435A

A person connecting the flexible water hose to the faucet's inlet from underneath the sink.

Attach the flexible water hose to the faucet's inlet connection underneath the sink. Hand-tighten securely. Then, connect the other end of the flexible water hose to a standard garden hose. Ensure all connections are tight to prevent leaks.

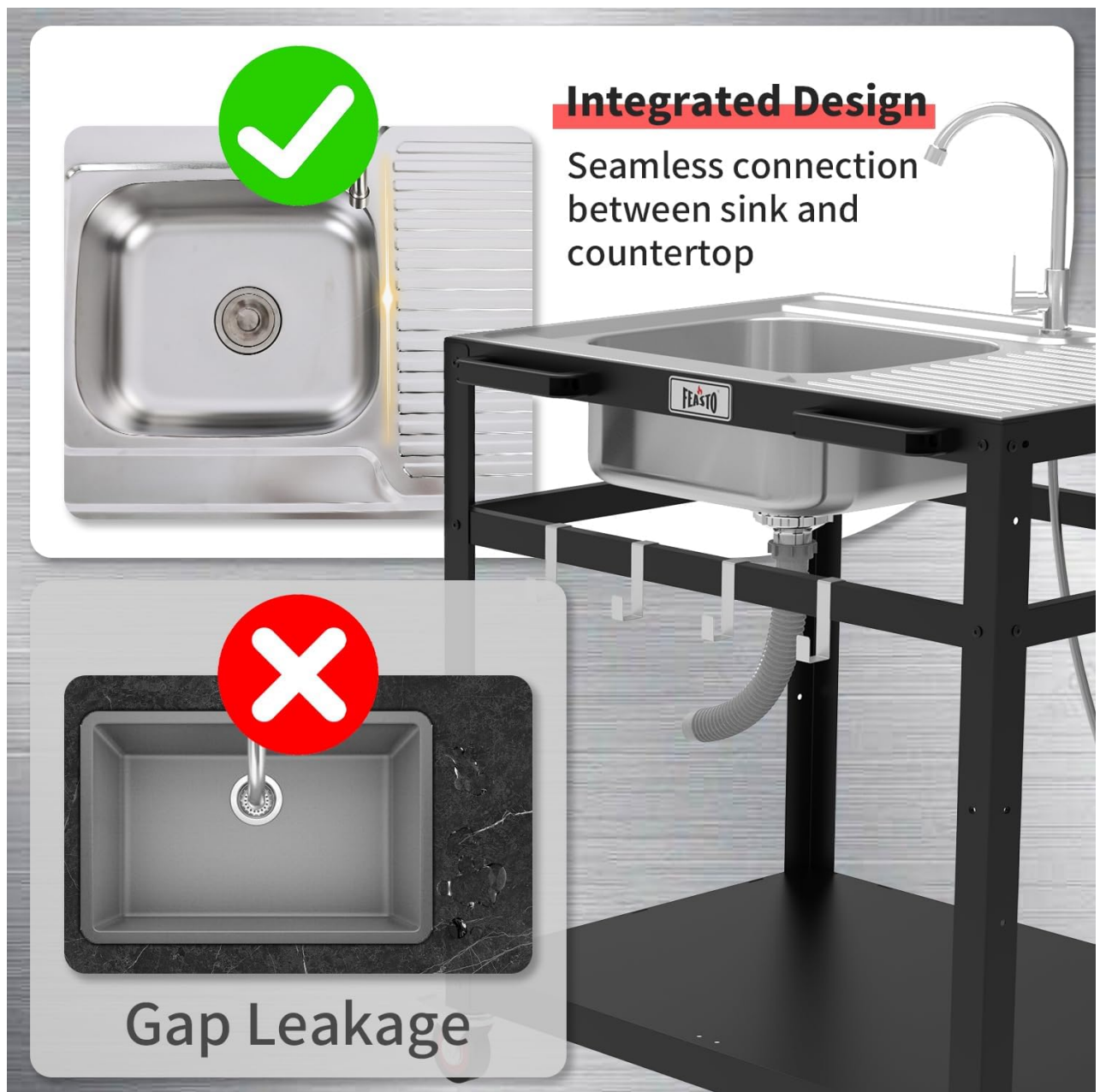
4. Step 4: Position the Drain Hose.



The flexible drain hose extended from the sink, directed into a blue bucket for water collection.

Direct the flexible drain hose into a suitable container, such as a 5-gallon bucket, or a designated drainage area. Ensure the hose is not kinked to allow for proper water flow.

5. Step 5: Attach Wheels (Optional).



A close-up view of one of the swivel wheels with a locking mechanism, attached to the base of the sink station.

If mobility is desired, attach the four swivel wheels to the bottom of the unit's legs using the provided hardware. Ensure the locking mechanisms are functional to secure the unit in place when needed.

Initial Use

Before first use, turn on the water supply and allow water to run through the faucet and sink for a few minutes to flush out any manufacturing residue. Carefully check all connection points for any signs of leaks.

OPERATING INSTRUCTIONS

Water Supply Control

To operate the sink, turn on the water supply from your connected garden hose. Use the faucet handle to control the water flow. The 360° goose-neck faucet allows for flexible direction of water flow.

Cleaning and Preparation

The stainless steel sink and integrated prep area are designed for washing vegetables, cleaning utensils, and preparing food outdoors. The spacious single bowl provides ample room for various tasks.

Tool Organization

Utilize the integrated hang hooks located on the side of the unit for convenient access to your grilling tools, cleaning cloths, or other outdoor accessories.

MAINTENANCE

Cleaning

- After each use, clean the stainless steel surfaces (sink and countertop) with a mild detergent and a soft, non-abrasive cloth or sponge.
- Rinse thoroughly with clean water and dry immediately to prevent water spots and maintain the material's shine.
- Regularly remove and clean the sink strainer to prevent food particles and debris from clogging the drainage pipe.
- For the frame, wipe down with a damp cloth as needed. Avoid harsh chemicals that may damage the finish.

Storage

- For prolonged outdoor exposure, especially during inclement weather or off-season, consider covering the unit with a weather-resistant cover to protect it from the elements.
- In freezing temperatures, it is crucial to disconnect the water hose and ensure all water is completely drained from the faucet and hoses to prevent freezing and potential damage to the plumbing components.

TROUBLESHOOTING

This section addresses common issues you might encounter with your Feasto Outdoor Kitchen Sink Station.

No Water Flow

- **Check Water Supply:** Ensure the garden hose is properly connected to a functioning water source and the spigot is fully open.
- **Hose Kinks:** Inspect the flexible water hose and the garden hose for any kinks or obstructions that might be blocking water flow.
- **Faucet Handle:** Confirm the faucet handle is in the open position.

Leaks at Connections

- **Tighten Connections:** Hand-tighten all connections, including the faucet to the sink, the flexible water hose to the faucet, and the garden hose to the flexible water hose. Do not overtighten.
- **Check Washers:** Ensure all rubber washers are properly seated and not damaged. Replace any worn or cracked washers.
- **Plumber's Tape:** For persistent leaks at threaded connections, apply plumber's tape (PTFE tape) to the threads before tightening.

Slow Drainage

- **Clear Strainer:** Remove any accumulated food particles or debris from the sink strainer. The detachable filter helps prevent clogging.
- **Drain Hose Kinks/Blockages:** Check the flexible drain hose for any kinks, twists, or blockages that might be impeding water flow. Ensure it is directed properly into your collection bucket or drainage area.

SPECIFICATIONS

Feature	Detail
Product Dimensions	26"D x 35.4"W x 47.2"H
Brand	Feasto
Material	Stainless Steel (Sink), Iron (Frame)
Color	Black

Feature	Detail
Special Feature	Easy Assembly
Number of Shelves	2
Recommended Uses	Outdoor, Indoor
Item Weight	40 Pounds
Number of Wheels	4
Assembly Required	Yes
Model Number	KT2435B
ASIN	B0CDGWJRSM
UPC	850038350222

Official Product Video



Your browser does not support the video tag.




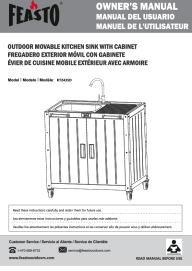
This video demonstrates the assembly and key features of the Feasto Modular Outdoor Kitchen Sink Station, including its portability and integrated design.

WARRANTY AND SUPPORT

For warranty information, technical support, or any questions regarding your Feasto Outdoor Kitchen Sink Station, please contact Feasto customer service directly. Refer to your purchase documentation for specific warranty terms and contact details. You can also visit the official Feasto Store on Amazon for more products and support: [Feasto Store](#).

Related Documents - KT2435B

	<p>Feasto Outdoor Mobile Kitchen Island Cart with Sink Owner's Manual</p> <p>Owner's manual for the Feasto Outdoor Mobile Kitchen Island Cart with Sink, model KT2435B. Includes safety precautions, cleaning and maintenance instructions, parts diagram, assembly guide, and limited warranty information.</p>
	<p>Feasto Primary 4 Burner Gas Grill Owner's Manual G49210 GL4001B</p> <p>Owner's manual for Feasto Primary 4 Burner Gas Grill (G49210, GL4001B). Covers safety, LP gas cylinder handling, operation, cleaning, maintenance, and troubleshooting for optimal and safe use.</p>

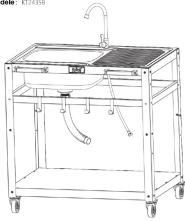
 <p>FEASTO OWNER'S MANUAL MANUAL DEL USUARIO MANUEL DE L'UTILISATEUR</p> <p>Primary 4 Burner S/S Gas Grill Parrilla a gas de 4 quemadores de acero inoxidable Barbecue à gaz à 4 brûleurs en acier inoxydable</p> <p>G49211 / GL4101S</p>	<p>Feasto Primary 4 Burner S/S Gas Grill Owner's Manual</p> <p>Comprehensive owner's manual for the Feasto Primary 4 Burner S/S Gas Grill (Model G49211/GL4101S). Includes safety instructions, operating procedures, cleaning and maintenance guides, and troubleshooting tips for your outdoor cooking appliance.</p>
 <p>FEASTO OWNER'S MANUAL MANUAL DEL USUARIO MANUEL DE L'UTILISATEUR</p> <p>Portable Charcoal Grill Parrilla de carbon portátil Barbecue au charbon portatif</p> <p>2720PC</p>	<p>Feasto 2720PC Portable Charcoal Grill Owner's Manual</p> <p>Comprehensive owner's manual for the Feasto 2720PC portable charcoal grill, covering safety, operation, grilling and smoking recipes, maintenance, and warranty information.</p>
 <p>FEASTO OWNER'S MANUAL MANUAL DEL USUARIO MANUEL DE L'UTILISATEUR</p> <p>OUTDOOR MOVABLE KITCHEN ISLAND PREP TABLE WITH CABINET ARMARIO MÓVIL EXTERIOR ISLA DE COCINA MESA DE PREPARACIÓN ILAT DE CUISINE MOBILE EXTERIEUR TABLE DE PREPARATION AVEC ARMOIRE</p> <p>KT2435C</p>	<p>FEASTO Outdoor Movable Kitchen Island Prep Table with Cabinet Owner's Manual</p> <p>This owner's manual provides comprehensive instructions for assembling, cleaning, and maintaining the FEASTO Outdoor Movable Kitchen Island Prep Table with Cabinet (Model KT2435C). It includes essential safety precautions, a detailed parts list, and step-by-step assembly guidance.</p>
 <p>FEASTO OWNER'S MANUAL MANUAL DEL USUARIO MANUEL DE L'UTILISATEUR</p> <p>OUTDOOR MOVABLE KITCHEN SINK WITH CABINET FREGADERO EXTERIOR MÓVIL CON GABINETE Évier de cuisine mobile EXTERIEUR AVEC ARMOIRE</p> <p>KT2435D</p>	<p>FEASTO KT2435D Outdoor Movable Kitchen Sink with Cabinet - Owner's Manual</p> <p>This owner's manual provides comprehensive instructions for the FEASTO KT2435D Outdoor Movable Kitchen Sink with Cabinet. It includes essential safety guidelines, detailed assembly steps with part identification, cleaning and maintenance procedures, and warranty information.</p>

OUTDOOR MOBILE KITCHEN ISLAND CART WITH SINK

COCINA MÓVIL PARA EXTERIOR CARRO ISLA CON FREGADERO

CHARIOT ÎLOT DE CUISINE MOBILE EXTÉRIEUR AVEC ÉVIER

Model / Modelo / Modèle: KT243B



Read these instructions carefully and retain them for future use.
Lue atentamente estas instrucciones y guárdelas para usarlas más adelante.
Veuillez lire attentivement les présentes instructions et les conserver afin de pouvoir vous y référer ultérieurement.

[\[pdf\]](#) User Manual Owner's Manual Instructions

Owner Manual Feasto Outdoor Kitchen Series 35 Stainless Steel Grill Cart with Sink Freestanding Station

Wheels faft1009 KT2435BFeasto KT2435Bkt2435b instructionsecure img1 ag wfc dn dm document

00d5a642 9818 4cac 891a 3376f763d4cc kt2435b instruction |||

...

lang: score:31 filesize: 5.48 M page_count: 15 document date: 2023-08-29