

COOAU C6

COOAU C6 Solar Security Camera User Manual

Model: C6

1. PRODUCT OVERVIEW

The COOAU C6 Solar Security Camera is an integrated sensor light camera designed for outdoor surveillance. It features 24 high-brightness LEDs, operates on a long-lasting battery, and requires no external power or complex wiring. Equipped with a human motion sensor, it provides instant notifications and is compatible with Alexa for convenient monitoring. This 3MP camera offers clear 2K video recording and is suitable for various outdoor security needs, including home entrances, gardens, and garages.



The COOAU C6 camera provides discreet surveillance and illumination.

2. SETUP AND INSTALLATION

The COOAU C6 camera is designed for easy, wire-free installation. Follow these steps to set up your camera:

1. **Charge the Camera:** Fully charge the camera before initial use.
2. **Mount the Bracket:** Secure the mounting bracket to your desired outdoor location using the

provided screws. Ensure the location receives adequate sunlight for the solar panel.



Step 1: Securely attach the mounting bracket to the wall.

- 3. Attach the Camera:** Slide the camera onto the mounted bracket until it clicks into place.



Step 2: Attach the camera body to the installed bracket.

- 4. Connect to Wi-Fi:** Download the dedicated COOAU app on your smartphone. Follow the in-app instructions to connect the camera to your 2.4GHz Wi-Fi network. *Note: This camera does not support 5GHz Wi-Fi.*

For a visual guide on the initial setup and installation, please refer to the video below:

Video: COOAU Easy Initial Setup and Installation Method. This video demonstrates the step-by-step process of setting up and installing your COOAU C6 camera, including app pairing and physical mounting.

3. OPERATION

3.1 AI Human Detection and Smart Notifications

The camera integrates a PIR sensor and an advanced human detection algorithm to minimize false alarms from non-human movements like falling leaves or insects. It sends smart notifications for important activities, allowing you to receive real-time alerts on your smartphone.

カスタマイズ検知エリア設定

必要な検知エリアを指定でき、検知時間帯と10段階検知感度を設定可能で、エリア外への通過する人と車などの「誤検知」の数を減らすことができます。

- 📏 検知エリアを設定
- 🕒 アラーム時間を設定
- 🔊 10段階の検知感度を設定



All human detection provides accurate alerts and deters intruders with light.

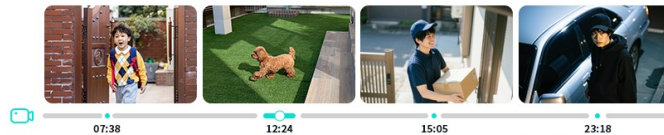
3.2 2K High Resolution and Enhanced Night Vision

Equipped with 24 high-brightness LED lights, the camera offers two night vision modes: full-color and infrared. It can capture clear, color images up to 15 meters away, allowing for quick identification of details like clothing or vehicle colors. The 2K resolution provides sharper and more detailed footage than traditional cameras.

安全で柔軟な映像ストレージ・重要な瞬間を保存・再生

録画した映像は、128GB以下のMicroSDカードに保存することができます。また完全暗号化されたクラウドストレージにデータを一層安全に保護することができます。不在時でも遠隔で訪問介護の来訪や宅配の玄関置き、車へのいたずらの証拠など重要な瞬間を簡単に再生できます。

- 📁 32~128までメモリカード
- 🔒 暗号化された無料6秒クラウドストレージ



Experience clear 2K resolution for detailed monitoring.

3.3 Two-Way Talk

Utilizing 3D noise reduction technology, the camera ensures clear audio transmission, enabling two-way communication with family members or visitors at any time. This feature is ideal for interacting with delivery personnel or checking in with children.

双方向通話

3Dノイズ低減技術を採用して音質が綺麗、声音を正確に伝え、いつでもご家族や訪問者と双方向のコミュニケーションを取ることができます。



Engage in two-way communication with visitors through the camera.

3.4 Remote Viewing and Alexa Compatibility

Connect the camera to your smartphone or tablet to view live footage from anywhere. The camera is also Alexa-compatible, allowing you to check real-time camera images by simply speaking commands to your Alexa-enabled device.



Monitor your property conveniently with Alexa integration.

3.5 Customizable Detection Settings

You can define specific detection areas, set detection time zones, and adjust the sensitivity across 10 levels. This helps reduce false detections from passing vehicles or pedestrians outside your designated surveillance zone.

即時アラーム・夜間強力防犯対策

サイレン警告モード

声光警報モード

発光威嚇モード

*音光威嚇機能が不要な際はOFFにすることもできます。



Customize detection zones and sensitivity for precise monitoring.

3.6 Local and Cloud Storage

Recorded footage can be stored securely on a local microSD card (up to 128GB, sold separately) or via up to 7 days of free cloud storage. This allows for easy playback, saving, and sharing of important moments, even when you are away.

よりシンプルに、より簡単に設置可能

複雑な配線や高価な取付費なしで、設置の自由度が高まり、景観を損なわない防犯対策が実現します。



ブラケットを取付



カメラを取付



Review and manage recorded events easily from your smartphone.

4. MAINTENANCE

The COOAU C6 camera is built for durability and minimal maintenance:

- **Weather Resistance:** With an IP65 waterproof and dustproof rating, the camera is designed to withstand harsh weather conditions, including typhoons, snow, and heavy rain. It operates reliably in temperatures ranging from -10°C to 50°C.

IP65防水規格

IP65防水・防塵のため、台風、雪、大雨などの厳しい環境でも正常に機能して、屋外設置に十分な耐久性があります。



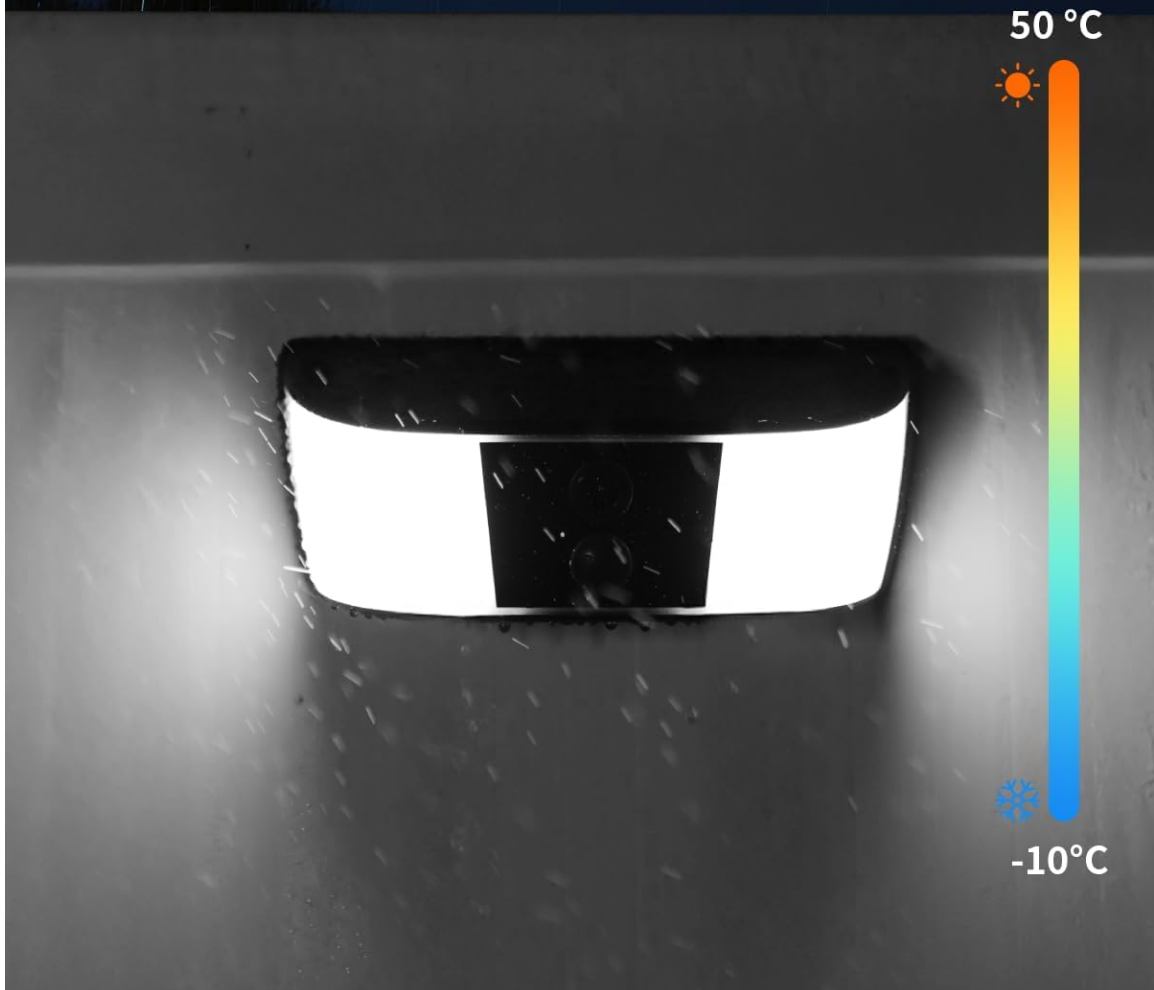
防水



耐寒性



防塵



The camera's IP65 rating ensures durability in various weather conditions.

- **Solar Panel Efficiency:** The advanced solar panel technology allows for efficient power generation even on cloudy days or during morning and evening hours, extending battery life and reducing the need for manual charging.
- **Cleaning:** Periodically wipe the camera lens and solar panel with a soft, damp cloth to ensure optimal performance and clear image quality. Avoid using abrasive cleaners.

5. TROUBLESHOOTING

- **Difficulty with Smartphone Setup:**
Ensure your smartphone is connected to a 2.4GHz Wi-Fi network during the setup process. Verify that the camera is fully charged. If issues persist, try restarting both your camera and router, then attempt the setup again.
- **Poor Wi-Fi Connection or Frequent Disconnections:**

The camera performs best when within a reasonable range of your Wi-Fi router. If the camera is installed far from the router, consider using a Wi-Fi extender to boost the signal strength in the camera's location. Ensure there are no major obstructions (thick walls, metal objects) between the camera and the router.

- **Sensor Not Functioning or Excessive Reactions:**

Adjust the detection sensitivity settings within the COOAU app. If the sensor is too sensitive, it may trigger false alarms from environmental factors like wind-blown trees. If it's not detecting motion, increase the sensitivity. Also, ensure the detection area is correctly configured to cover only the desired surveillance zone.

- **Image Quality Issues:**

Check if the camera lens is clean and free from dust or smudges. Ensure there is sufficient lighting in the area, especially at night. If using night vision, confirm the mode (color or infrared) is appropriate for the conditions.

6. SPECIFICATIONS

Feature	Detail
Brand	COOAU
Model Number	C6
Connectivity Technology	Wireless (Wi-Fi)
Indoor/Outdoor Use	Outdoor
Connection Protocol	Wi-Fi (2.4GHz only)
Mounting Type	Wall Mount
Video Capture Resolution	1296p (2K)
Included Components	Camera body x1, Rubber plug, Screws x3, Japanese instruction manual x1
Product Dimensions (LxWxH)	19 x 8 x 7 cm
Required Batteries	Yes (Built-in)
Video Capture Format	MP4

7. WARRANTY AND SUPPORT

The COOAU C6 Solar Security Camera comes with a **24-month long-term warranty**. For any technical assistance, troubleshooting, or warranty claims, please contact COOAU customer support through their official website or the contact information provided in your product packaging. Please have your model number (C6) and purchase details ready when contacting support.