



Manuals.plus /

› **TMPQAHR** /

› TMPQAHR L-Shaped Corner Computer Desk (Model XINDELILI) - User Manual

TMPQAHR XINDELILI

TMPQAHR L-Shaped Corner Computer Desk

Model: XINDELILI (47x39in Black-Left)

1. INTRODUCTION

Thank you for choosing the TMPQAHR L-Shaped Corner Computer Desk. This manual provides essential information for the safe and efficient assembly, operation, and maintenance of your new desk. Please read these instructions carefully before beginning assembly and retain them for future reference.

This L-shaped desk is designed to maximize your workspace, offering a spacious surface for computers, books, and other office essentials. Its robust construction ensures stability and durability for long-term use in various settings such as home offices, bedrooms, or study areas.

2. SAFETY INFORMATION

- Ensure all parts are present and undamaged before assembly. Do not proceed with assembly if any parts are missing or damaged.
- Assemble the desk on a soft, clean surface to prevent scratches.
- Do not overtighten screws during assembly, as this may damage the material.
- The maximum load capacity for this desk is approximately 100 kg (220 lbs). Do not exceed this weight limit.
- Keep small parts away from children during assembly to prevent choking hazards.
- Regularly check all fasteners to ensure they remain tight.
- Avoid placing hot items directly on the desktop surface. Use coasters or protective pads.

3. PACKAGE CONTENTS

Before starting assembly, verify that all components listed below are included in your package. If any parts are missing or damaged, please contact customer support.

- Desktop Panels (L-shaped sections)
- Metal Frame Components (legs, crossbars, support beams)

- Assembly Hardware (screws, bolts, Allen wrench)
- Adjustable Non-Slip Feet
- Instruction Manual (this document)

4. SETUP AND ASSEMBLY

Assembly typically takes approximately 40 minutes. Follow these steps carefully:

4.1 Unpacking and Preparation

1. Carefully unpack all components and lay them out on a clean, soft surface (e.g., a carpet or blanket) to prevent damage.
2. Identify all parts against the package contents list.

4.2 Assembling the Frame

1. Attach the adjustable non-slip feet to the bottom of each leg component.
2. Connect the leg components using the crossbars and support beams. Ensure all connections are secure but do not fully tighten screws yet.
3. Refer to the diagram below for proper frame orientation and reinforcement points.

Multi-bar reinforcement for stable support

Extra strong load capacity about 100KG/220lb



Figure 4.2.1: Multi-bar reinforcement structure beneath the desk, demonstrating enhanced stability and load-bearing capacity. (Note: Image shows a white desk, but the structure is identical for all colors.)

4.3 Attaching the Desktop Panels

1. Carefully place the L-shaped desktop panels onto the assembled metal frame.
2. Align the pre-drilled holes in the desktop with the holes in the frame.
3. Secure the desktop panels to the frame using the provided screws. Tighten all screws evenly.
4. The desk can be configured with the longer section on either the left or right side to suit your space.

Bookcase left and right selectable



Bookshelf on the left.



Bookshelf on the right



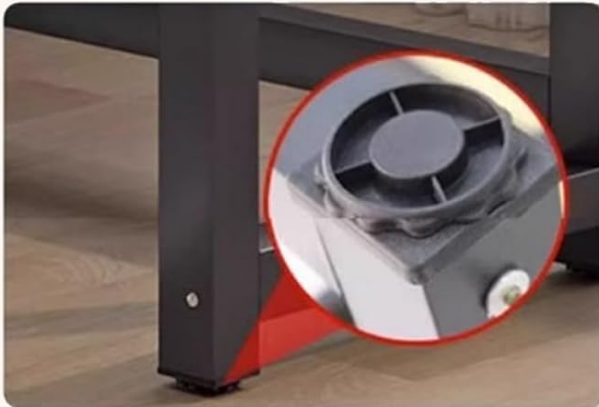
Figure 4.3.1: Visual comparison of the desk configuration options, showing how the L-shape can be assembled with the longer side on either the left or right to accommodate different room layouts.

4.4 Final Adjustments

1. Once fully assembled, gently lift and move the desk to its desired location.
2. Adjust the non-slip feet to ensure the desk is level and stable on uneven floors.



Convenient threading holes
Convenient cable routing
Tidy desktop



Adjustable non-slip feet
Prevents the table from sliding and
Protects floors



Reinforced crossbar design
Uniform force
Stable table body without wobbling

Figure 4.4.1: Illustrations of practical design elements: integrated threading holes for cable management, adjustable non-slip feet for stability on uneven floors, and the reinforced crossbar for structural integrity.

5. OPERATING INSTRUCTIONS

5.1 Workspace Utilization

- The L-shaped design provides ample space for multiple monitors, laptops, and other peripherals. Distribute weight evenly across the desktop.
- Utilize the corner section for optimal placement of your primary monitor or frequently accessed items.

L-shaped desktop

Increase the arm movement area, spacious and not overstuffed

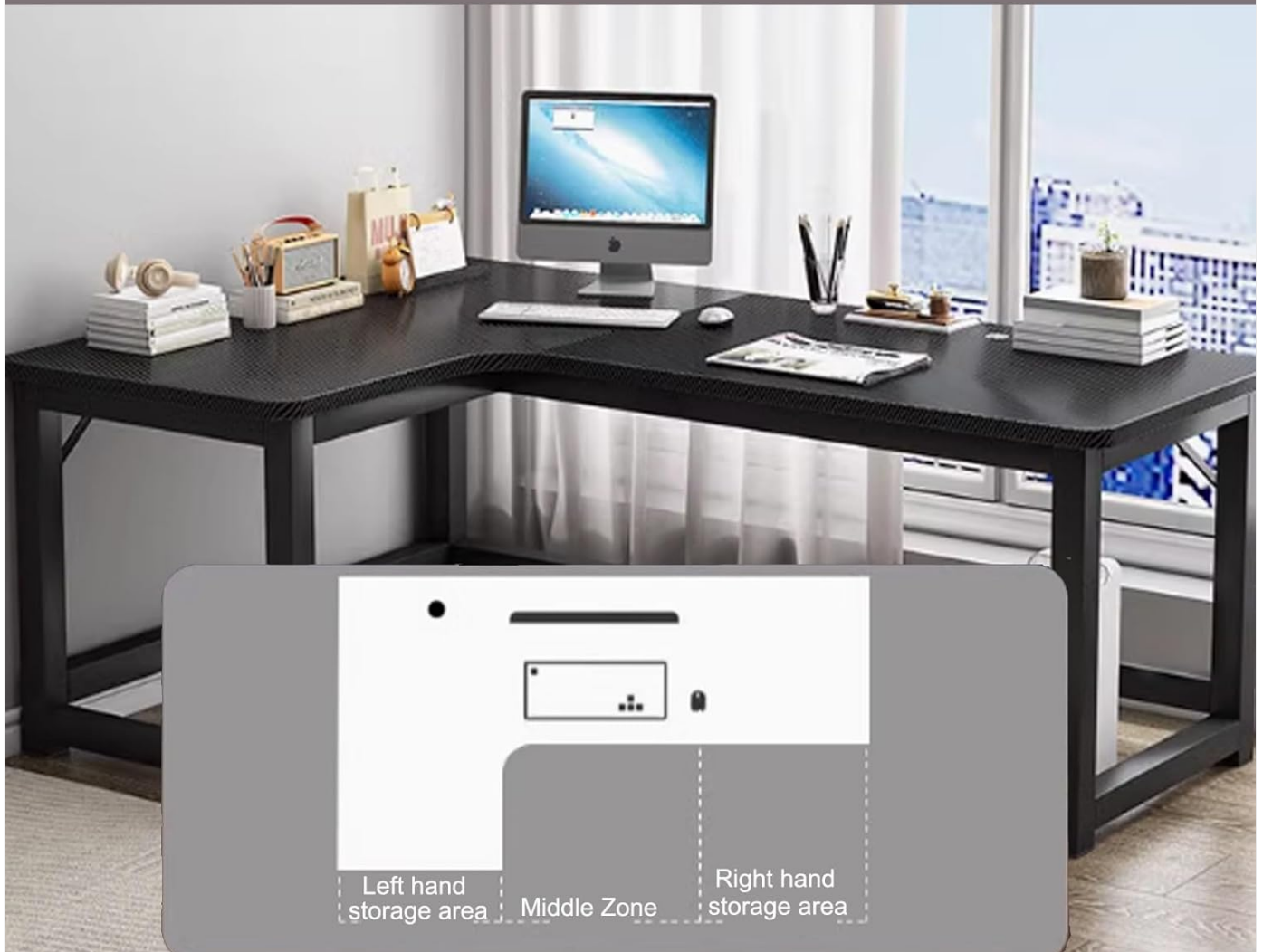


Figure 5.1.1: Illustration of the L-shaped desktop layout, highlighting left-hand storage, middle zone, and right-hand storage areas for optimal organization.

5.2 Cable Management

- Use the integrated threading holes on the desktop to route cables neatly, reducing clutter and improving safety.
- Secure excess cables with cable ties or clips (not included) to prevent them from hanging or getting tangled.

6. MAINTENANCE

6.1 Cleaning

- Wipe the desktop surface with a soft, damp cloth. Avoid abrasive cleaners or harsh chemicals that could damage the finish.
- For metal parts, use a dry or slightly damp cloth to remove dust.
- Dry all surfaces immediately after cleaning to prevent water spots or damage.

6.2 Inspection

- Periodically inspect all screws and bolts to ensure they are tight. Retighten if necessary.
- Check the adjustable feet for wear and tear, and ensure they are providing stable support.

7. TROUBLESHOOTING

Problem	Possible Cause	Solution
Desk is wobbly	Uneven floor; loose fasteners	Adjust the non-slip feet to level the desk. Tighten all assembly screws.
Parts do not fit	Incorrect orientation; manufacturing defect	Double-check the assembly diagrams. If parts are defective, contact customer support.
Missing hardware	Packaging error	Contact customer support for replacement parts.

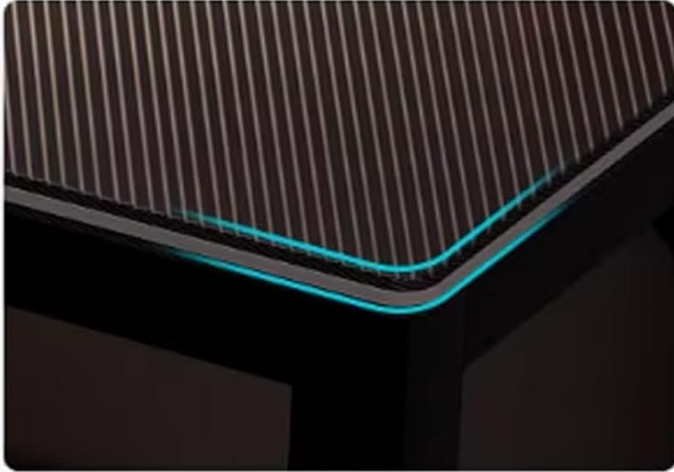
8. SPECIFICATIONS

Feature	Detail
Brand	TMPQAHR
Model Name	XINDELILI
Shape	L-Shape
Color	Black-left (Current Variant)
Dimensions (L x W x H)	47 x 39 x 29.5 inches (120 x 100 x 75 cm)
Material	Thickened Plate, Steel Legs
Item Weight	11.8 kg (26 lbs)
Max Load Capacity	Approx. 100 kg (220 lbs)
Assembly Required	Yes (Estimated 40 minutes)
Special Features	Threading holes for cable management, adjustable non-slip feet, rounded corners, reinforced frame.



Figure 8.1: Image showing the overall dimensions of the L-shaped desk, including length, width, and height.

Product Details



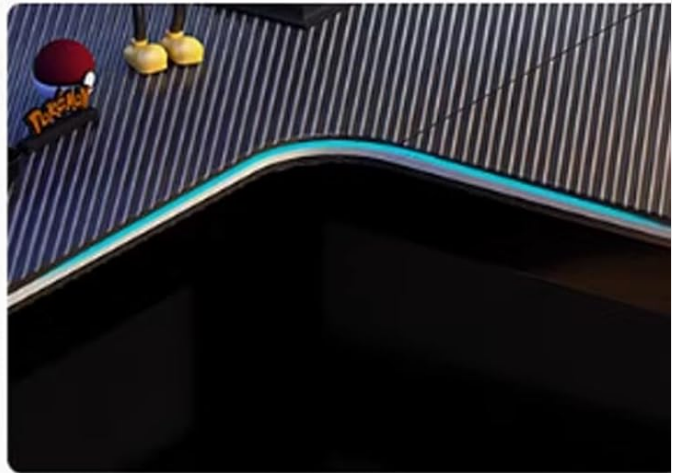
Rounded corners, not easy to bump



Ribbed design, stable and upgraded



Thick table legs, stable and load-bearing



Curved corners, easy to use

Figure 8.2: Detailed views of key product features: rounded corners for safety, ribbed desktop design, thick and stable table legs, and smoothly curved edges.

9. WARRANTY AND SUPPORT

For any questions regarding assembly, missing parts, or product defects, please contact TMPQAHR customer support. Please have your model number (XINDELILI) and purchase information ready when contacting support.

Specific warranty details may vary by region and retailer. Please refer to your purchase documentation or contact the seller for warranty information.