

[Manuals.plus](#) /

> [SUPERFLO](#) /

> SUPERFLO 1000W Macerator Pump User Manual (Model MP-1000W)

SUPERFLO MP-1000W

SUPERFLO 1000W Macerator Pump User Manual

Model: MP-1000W | Brand: SUPERFLO

1. INTRODUCTION

The SUPERFLO 1000W Macerator Pump is designed to efficiently manage wastewater from various fixtures in locations where gravity drainage is not feasible, such as basements, attics, or extensions. This powerful unit features a 1000W motor capable of pumping wastewater up to 36 feet (11 meters) vertically and 360 feet (110 meters) horizontally. Its versatile 4-inlet design allows connection to a toilet, sink, shower, and washing machine, making it suitable for full or half bathrooms, kitchenettes, and laundry rooms. The pump incorporates clog-resistant stainless steel blades and an odor-free, vent-free system for reliable and low-maintenance operation.

2. SAFETY INFORMATION

- Always disconnect the power supply before performing any maintenance or installation procedures.
- Ensure the pump is installed in a well-ventilated area.
- Do not operate the pump if the power cord is damaged. Contact qualified personnel for repair.
- This appliance is not intended for use by persons (including children) with reduced physical, sensory or mental capabilities, or lack of experience and knowledge, unless they have been given supervision or instruction concerning use of the appliance by a person responsible for their safety.
- Do not dispose of foreign objects such as sanitary products, wet wipes, or excessive amounts of toilet paper into the toilet connected to the macerator pump, as this can cause blockages.
- The maximum tolerable water temperature is 194°F (90°C). Avoid prolonged exposure to extremely hot water.
- The unit is IPX4 waterproof, meaning it is protected against splashing water from any direction. However, it is not recommended to rinse directly with water.

3. PRODUCT OVERVIEW

The SUPERFLO 1000W Macerator Pump is a compact and powerful unit designed for efficient wastewater management. It features multiple inlets for various fixtures and a robust motor for effective waste disposal.



Figure 3.1: Overview of the SUPERFLO 1000W Macerator Pump, highlighting its powerful 1000W motor and ability to handle multi-device wastewater.



Figure 3.2: The 4-inlet design of the macerator pump, illustrating connections for a shower, laundry machine, toilet, and sink, enabling efficient wastewater removal from multiple devices.

4. SETUP AND INSTALLATION

Proper installation is crucial for the optimal performance and longevity of your SUPERFLO Macerator Pump. Follow these steps carefully.

4.1 Placement Considerations

The pump is ideal for installations in basements, attics, or any area below the main drainage lines. Ensure the unit is placed on a stable, level surface.



Figure 4.1: The SUPERFLO 1000W Macerator Pump can discharge wastewater up to 36 feet vertically and 360 feet horizontally, making it suitable for various challenging installations.

4.2 Connecting Inlets

The pump features four water inlets for connecting various fixtures. Use appropriate connectors and ensure all connections are secure and watertight.

- **Toilet Connection:** Connect the toilet outlet to the main inlet of the macerator pump. Ensure a tight seal.
- **Auxiliary Inlets:** The side inlets (40mm) can be used for connecting a shower, washbasin, or washing machine. If an inlet is not used, it must be securely capped.

Your browser does not support the video tag.

Video 4.1: This video demonstrates the various features and connection points of the SUPERFLO Macerator Pump, including the side inlets and the main toilet connection. It also highlights the internal components and operation.

Your browser does not support the video tag.

Video 4.2: This video illustrates the installation process of the macerator pump with a two-piece toilet, showing how wastewater enters the

unit and is then pumped out. It also explains the importance of a 3% slope for the discharge pipeline.

4.3 Discharge Pipe Connection and Slope

Connect the discharge pipe from the pump to your main sewage line. Ensure the discharge pipeline has a minimum 3% slope to facilitate proper drainage and prevent backflow. The pump supports multi-size compatibility for the check valve, offering flexible connections for various pipe sizes (23mm, 28mm, 32mm, 44mm).

4.4 Electrical Connection

Connect the pump to a standard 120V electrical outlet. Ensure the outlet is properly grounded and protected by a Residual Current Device (RCD) for safety.



Figure 4.3: Installation options for the macerator pump, showing placement behind a toilet and a concealed installation behind a wall.

5. OPERATING INSTRUCTIONS

The SUPERFLO Macerator Pump operates automatically once properly installed and connected to power.

- **Automatic Activation:** The pump activates automatically when wastewater enters the unit and reaches a certain level, triggering the internal air switch.
- **Maceration Process:** The 304 stainless steel blades will shred solid waste, and the powerful 1000W motor will pump the liquefied waste through the discharge pipe.
- **Quiet Operation:** The pump is designed for silent operation, typically between 20-30dB, ensuring minimal disturbance.

6. MAINTENANCE

Regular maintenance ensures the longevity and efficient operation of your macerator pump.

6.1 Clog Prevention

To prevent clogs, avoid flushing items such as:

- Sanitary napkins, tampons, or other feminine hygiene products.
- Wet wipes, paper towels, or cotton balls.
- Hair, dental floss, or other fibrous materials.
- Grease, oil, or chemical solvents.

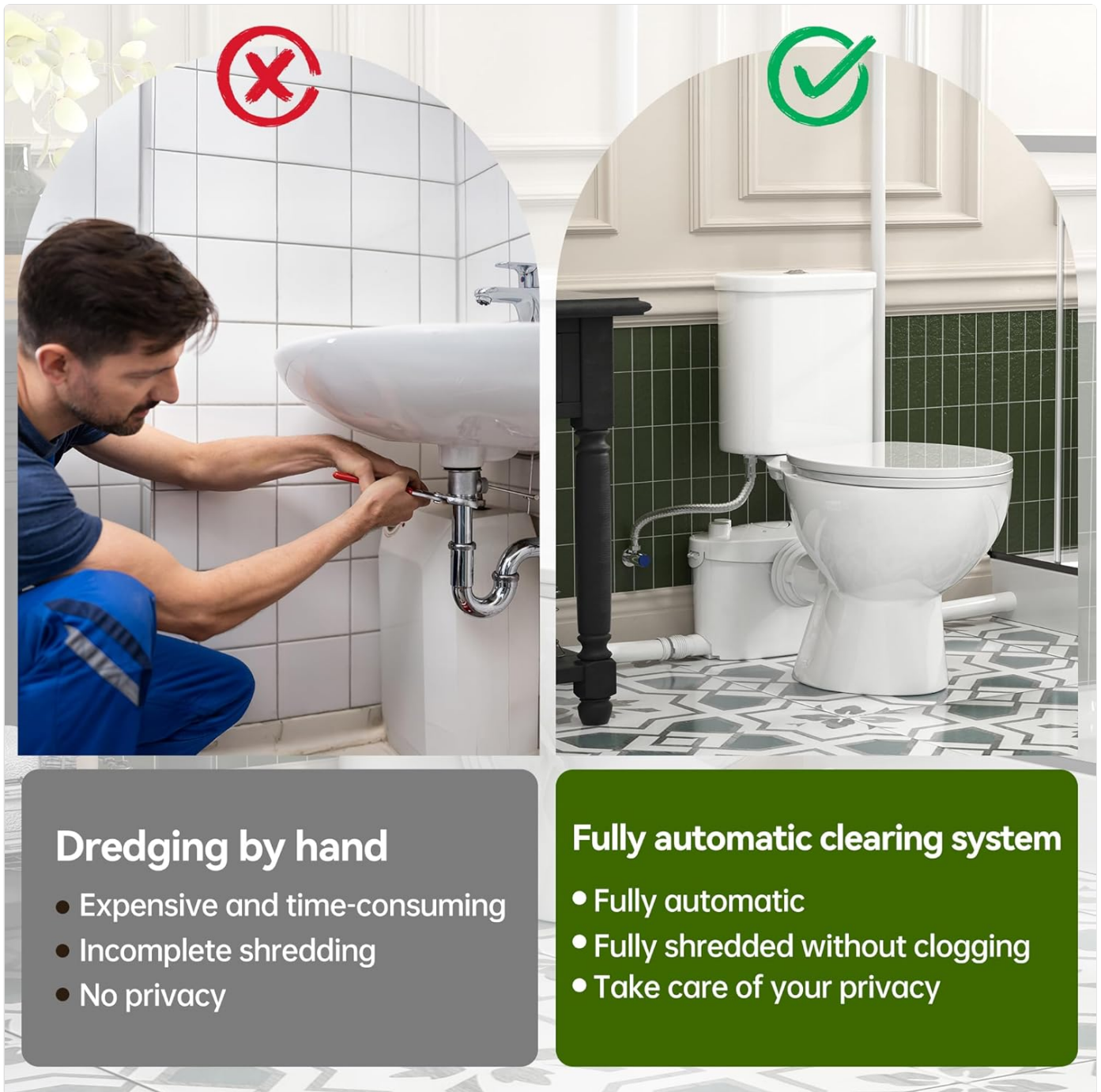


Figure 6.1: The automatic clearing system of the macerator pump eliminates the need for manual dredging, ensuring efficient and clog-free operation.

6.2 Easy Maintenance Access

The SUPERFLO pump features an openable service cover for easy access to the internal components, simplifying maintenance and blockage removal.

Openable Service Cover for Easy Maintenance

Our Pump



Others



Figure 6.2: The openable service cover allows for easy inspection and removal of any blockages, reducing maintenance effort.

6.3 Odor Control

The unit is designed with an odor-free, vent-free system, often utilizing activated carbon for deodorization. This eliminates the need for external venting or carbon filters.



Figure 6.3: Activated carbon deodorization system helps maintain an odor-free environment.

7. TROUBLESHOOTING

If you encounter issues with your macerator pump, refer to the following troubleshooting guide:

- **Pump Not Activating:**

- Check if the pump is properly plugged into a working electrical outlet.
- Ensure the water level in the unit is sufficient to activate the air switch.
- Inspect for any blockages in the inlets or discharge pipe that might prevent water from reaching the sensor.

- **Pump Running Continuously:**

- Check for leaks in the system that might be continuously filling the pump.
- Inspect the non-return valve in the discharge pipe for proper function.

- **Alarm Sounding:**

- If the impeller is blocked, an alarm on the PCB will sound after 3 minutes to indicate that maintenance is required. This prevents damage to the motor.
- Disconnect power, open the service cover, and clear any obstructions from the impeller.

- **Unusual Noises:**

- Foreign objects in the macerator chamber can cause grinding or rattling noises. Disconnect power and inspect the chamber.
- Ensure the pump is securely placed and not vibrating against other surfaces.

8. SPECIFICATIONS

Feature	Specification
Brand	SUPERFLO
Model Number	MP-1000W
Power Source	Corded Electric

Feature	Specification
Wattage	1000 watts
Voltage	120 Volts
Maximum Flow Rate	155 Liters Per Minute
Maximum Lifting Height	36 Feet (11 Meters)
Horizontal Discharge	360 Feet (110 Meters)
Product Dimensions	16"L x 6.9"W x 10.2"H
Item Weight	15.97 pounds
Material	Plastic
Color	White
Inlets	4 (for toilet, sink, shower, washing machine)
Max Tolerable Water Temperature	194°F (90°C)
Waterproof Level	IPX4

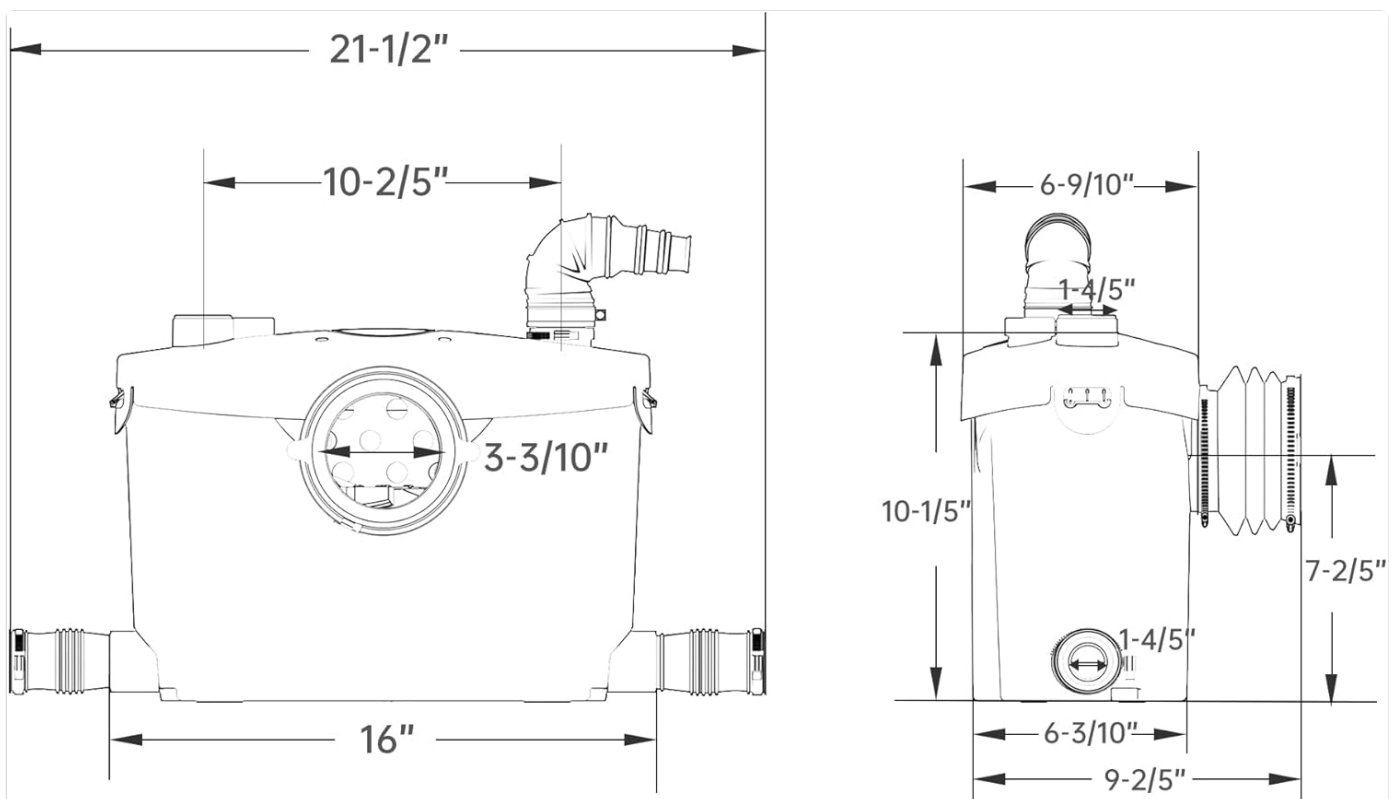


Figure 8.1: Detailed dimensions of the SUPERFLO Macerator Pump for installation planning.

9. WARRANTY AND SUPPORT

For warranty information and technical support, please refer to the documentation included with your purchase or visit the official SUPERFLO website. Keep your proof of purchase for warranty claims.

Contact Information:

- **Website:** [Visit the SUPERFLO Store on Amazon](#)

- **Customer Service:** Refer to your product packaging or the SUPERFLO website for the most current contact details.