



Manuals.plus /

› **TMPQAHR** /

› TMPQAHR XINDELILI L-Shaped Desk Instruction Manual (55x39in, Black-Left)

## TMPQAHR XINDELILI

# TMPQAHR XINDELILI L-Shaped Desk Instruction Manual

Model: XINDELILI | Brand: TMPQAHR | Size: 55x39in | Color: Black-Left

## 1. INTRODUCTION

Thank you for choosing the TMPQAHR XINDELILI L-Shaped Desk. This manual provides detailed instructions for the assembly, operation, and maintenance of your new desk. Please read this manual thoroughly before beginning assembly to ensure correct setup and safe use. This desk is designed to provide a spacious and organized workspace for your home office, gaming setup, or study area.

Key features include a spacious L-shaped desktop, durable construction with thickened plates and a sturdy metal frame, convenient threading holes for cable management, and adjustable non-slip feet for stability.

## 2. SAFETY INFORMATION

- Always follow assembly instructions carefully. Incorrect assembly can lead to instability and potential injury.
- Ensure all screws and fasteners are securely tightened before use. Periodically check and re-tighten as needed.
- Do not exceed the maximum load capacity of 100 kg (220 lbs) for the desktop. Distribute weight evenly.
- Keep small parts and packaging materials away from children to prevent choking hazards.
- Avoid placing hot items directly on the desktop surface. Use coasters or protective pads.
- The desk features rounded corners to prevent bumps. Exercise caution when moving the desk.

## 3. PACKAGE CONTENTS

Before starting assembly, verify that all components and hardware are present. The package includes all necessary mounting accessories for a straightforward setup.

- L-shaped desktop sections
- Metal frame components (legs, beams, crossbars)
- Adjustable non-slip feet

- Assembly hardware (screws, bolts, Allen wrench, etc.)
- Instruction manual

## **4. SETUP AND ASSEMBLY**

---

Assembly of this desk is designed to be simple and typically takes approximately 40 minutes. It is recommended to assemble the desk in the room where it will be used. A second person may be helpful for certain steps.

### **4.1. Unpacking and Preparation**

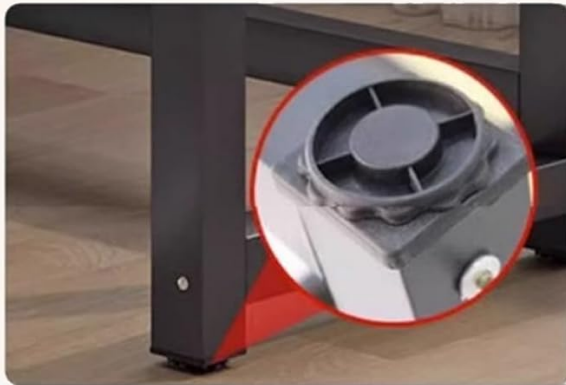
1. Clear a spacious area for assembly.
2. Carefully unpack all components and lay them out on a soft, clean surface to prevent scratches.
3. Identify all parts against the provided parts list (if included) or the general description above.

### **4.2. Assembling the Frame**

1. Attach the main support beams to the desk legs using the provided hardware. Ensure all connections are snug but do not fully tighten yet.
2. Connect the reinforced crossbars between the leg frames. These crossbars provide uniform force distribution and prevent wobbling.
3. Screw the adjustable non-slip feet into the bottom of each leg. These feet help stabilize the desk on uneven floors and protect your flooring.



**Convenient threading holes**  
Convenient cable routing  
Tidy desktop



**Adjustable non-slip feet**  
Prevents the table from sliding and  
Protects floors



**Reinforced crossbar design**  
Uniform force  
Stable table body without wobbling

This collage highlights practical features of the desk: a built-in threading hole for organized cable routing, adjustable non-slip feet for stability on uneven surfaces and floor protection, and a reinforced crossbar for overall structural integrity.

### 4.3. Attaching the Desktop

1. Carefully place the L-shaped desktop sections onto the assembled frame. Align the pre-drilled holes in the desktop with the holes in the frame.
2. Secure the desktop to the frame using the remaining screws. Fully tighten all screws on the frame and desktop connections.
3. You can choose the orientation of the L-shape (longer section left or right) during this step to best suit your space.

# Bookcase left and right selectable



Bookshelf on the left.



Bookshelf on the right



This image demonstrates the versatility of the L-shaped desk, showing how it can be assembled with the longer desktop section configured to either the left or the right, adapting to different room layouts and user preferences.

## 4.4. Final Adjustments

1. Once fully assembled, gently push and pull the desk to ensure it is stable.
2. Adjust the non-slip feet as needed to eliminate any wobbling.



This image illustrates the key dimensions of the L-shaped desk, providing measurements for both sections of the desktop, its depth, and overall height. These measurements are crucial for planning your workspace.

# L-shaped desktop

Increase the arm movement area, spacious and not overstuffed



This image highlights the spacious L-shaped desktop, demonstrating how it can accommodate a full computer setup. An overlay diagram indicates potential storage zones for efficient organization.

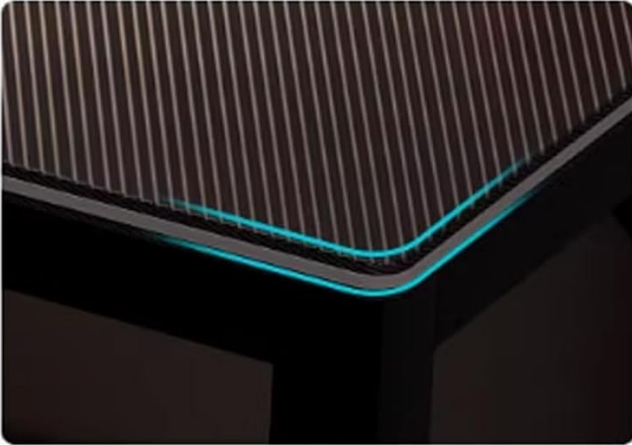
## **Multi-bar reinforcement for stable support**

Extra strong load capacity about 100KG/220lb



This image details the multi-bar reinforcement structure beneath the desk, emphasizing its robust design for enhanced stability and a high load-bearing capacity of up to 100 kg (220 lbs).

# Product Details



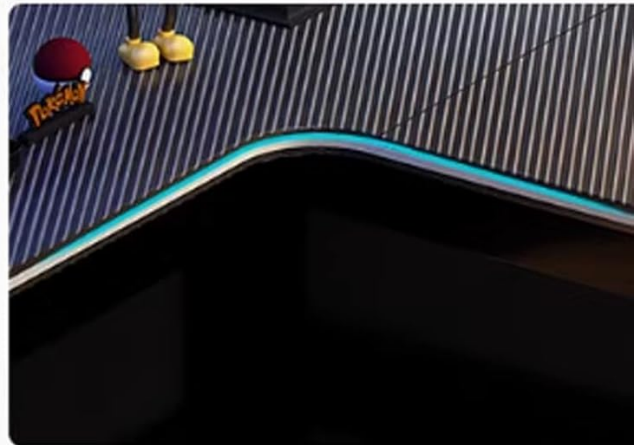
**Rounded corners, not easy to bump**



**Ribbed design, stable and upgraded**



**Thick table legs, stable and load-bearing**



**Curved corners, easy to use**

This collage provides detailed views of the desk's construction, including safety-focused rounded corners, a textured ribbed desktop, robust thick table legs, and ergonomically curved edges.

## 5. OPERATING INSTRUCTIONS

Your L-shaped desk is designed for versatile use in various settings.

- **Workspace Organization:** Utilize the expansive L-shaped desktop to separate different work zones. For example, one section can be for your computer setup, while the other can be for writing, reading, or creative tasks.
- **Cable Management:** The desktop is equipped with convenient threading holes. Route your computer, monitor, and peripheral cables through these holes to maintain a tidy and organized workspace, reducing clutter and potential hazards.
- **Adjustable Stability:** If your floor is uneven, adjust the non-slip feet at the bottom of the desk legs. Turn them clockwise or counter-clockwise until the desk is level and stable, preventing wobbling.
- **Multifunctional Use:** This desk is suitable for various purposes, including a computer desk, office desk, study desk, writing desk, workstation, or gaming table.

## 6. MAINTENANCE

Proper care will extend the life and appearance of your desk.

- **Cleaning:** Wipe the desktop and frame with a soft, damp cloth. For stubborn marks, a mild soap solution can be used, followed by wiping with a clean, dry cloth.
- **Avoid Harsh Chemicals:** Do not use abrasive cleaners, strong detergents, or solvents, as these can damage the finish of the desk.
- **Liquid Spills:** Immediately wipe up any liquid spills to prevent staining or damage to the desktop material.
- **Hardware Check:** Periodically check all screws and bolts to ensure they remain tight. Re-tighten if necessary to maintain stability.

## 7. TROUBLESHOOTING

---

If you encounter any issues with your desk, refer to the following common solutions:

- **Desk is Wobbling:**
  - Ensure all assembly screws are fully tightened.
  - Adjust the non-slip feet on the bottom of the legs to compensate for uneven flooring.
- **Cables are Disorganized:**
  - Utilize the integrated threading holes on the desktop to route and manage cables neatly.
- **Difficulty during Assembly:**
  - Review the assembly instructions carefully. Ensure all parts are oriented correctly.
  - Do not overtighten screws until all components are loosely fitted, then tighten them progressively.

## 8. SPECIFICATIONS

---

Feature	Detail
Brand	TMPQAHR
Model Name	XINDELILI
Shape	L-Shape
Color	Black-left
Size	55*39in (140x100cm)
Item Weight	11800 Grams (approx. 26 lbs)
Age Range Description	Adult
Unit Count	1.0 Count

## 9. WARRANTY

---

Specific warranty information for the TMPQAHR XINDELILI L-Shaped Desk may vary. Please retain your proof of purchase. For details regarding warranty coverage and terms, contact the seller or manufacturer directly.

## 10. SUPPORT

---

If you have any questions, require assistance with assembly, or need further support, please contact TMPQAHR

customer service through the platform where you purchased the product. Provide your model number (XINDELILI) and purchase details for faster service.