

[Manuals.plus](#) /

> [Locksworth](#) /

> Locksworth 0.23 Cubic Feet Digital Electronic Security Safe Box - User Manual

Locksworth AZ17609-BK

Locksworth 0.23 Cubic Feet Digital Electronic Security Safe Box - User Manual

Model: AZ17609-BK

1. INTRODUCTION

Thank you for choosing the Locksworth 0.23 Cubic Feet Digital Electronic Security Safe Box. This safe is designed to provide secure storage for your valuables, including cash, documents, jewelry, and other important items. Its compact design makes it suitable for various environments such as homes, offices, hotels, and dorms. Please read this manual carefully before operating the safe to ensure proper use and to maximize its security features.

2. SAFETY INFORMATION

- Do not lock the emergency keys inside the safe. Always keep them in a secure, accessible location outside the safe.
- Ensure the safe is placed on a stable, level surface or securely mounted to a wall or floor.
- Keep the safe away from excessive moisture or direct sunlight.
- This safe is designed for security, not fire resistance unless explicitly stated for the fireproof bag.
- Keep children away from the safe to prevent accidental locking or tampering.

3. PACKAGE CONTENTS

Please check the package to ensure all items are present:

- 1 x Locksworth Safe Box
- 2 x Emergency Keys
- 2 x Expansion Bolts (for mounting)
- 1 x Floor Mat
- 1 x User Manual
- 1 x Fireproof Bag

PRODUCT INFORMATION



Figure 3.1: Package Contents and Safe Dimensions

4. GETTING STARTED (INITIAL SETUP)

4.1 Opening the Safe for the First Time

Upon receiving your safe, you will need to open it using the emergency key to install batteries and set your personal passcode.

1. Locate the emergency keyhole, usually concealed behind a small cover on the keypad panel.
2. Insert one of the emergency keys into the keyhole and turn it counter-clockwise.
3. While the key is turned, rotate the knob clockwise to open the safe door.

2 METHODS OF OPENING

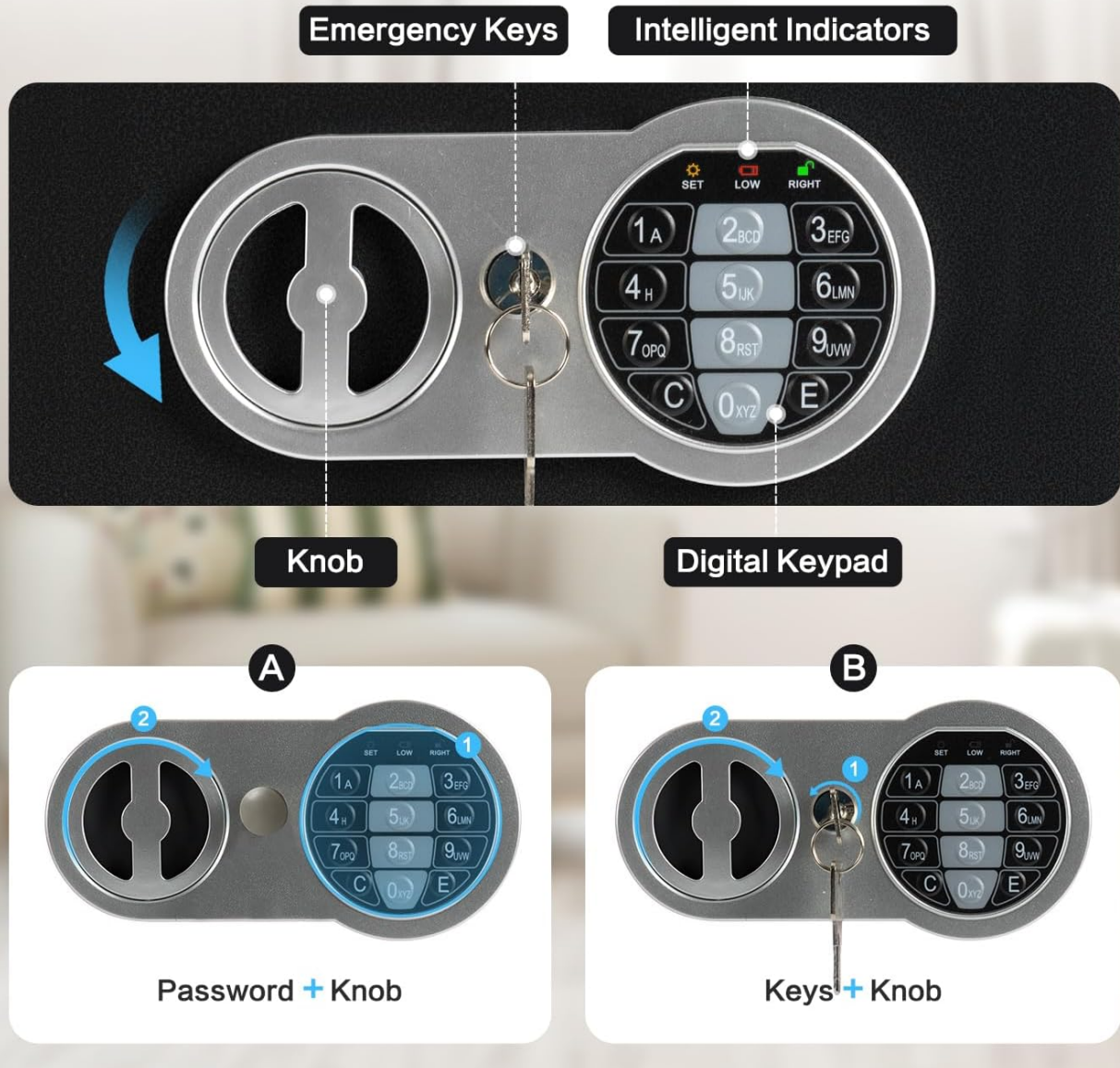


Figure 4.1: Dual-Access Security

4.2 Battery Installation

The safe requires 4 AA batteries (not included) for the electronic keypad to function.

1. With the safe door open, locate the battery compartment on the inside of the door.
2. Open the battery compartment cover.
3. Insert 4 AA batteries, ensuring correct polarity (+/-).
4. Close the battery compartment cover.

EASY SETUP

Step 1. Remove Override Key Cover

Step 2. Open Safe with Override Key



Step 4. Press Reset Button & Program
A New Pass Code+"E"

Step 3. Install Batteries

Figure 4.2: Battery Installation and Passcode Setup Overview

4.3 Setting Your Passcode

You can program a personal passcode (1 to 8 digits long).

1. With the safe door open and batteries installed, locate the red reset button inside the safe, usually near the battery compartment.
2. Press the reset button. The safe will emit two beeps, and the yellow indicator light on the keypad will illuminate.
3. Enter your desired new passcode (1 to 8 digits).
4. Press the "#" or "E" button to confirm. The safe will emit two beeps, and the yellow indicator light will turn off, indicating the passcode has been successfully set.

4.4 Mounting the Safe

The safe can be mounted to a wall or floor for added security. Pre-drilled holes are provided on the back and bottom of the safe.

1. Choose a suitable location for mounting.

2. Mark the drilling points through the pre-drilled holes on the safe.
3. Drill holes into the wall or floor at the marked positions.
4. Insert the expansion bolts into the drilled holes.
5. Align the safe with the bolts and secure it tightly.



Anti-Drilling

Easy to Install

Easily mount on the wall or floor



Solid Locking Bolts

0.6 in

- Step 1



- Step 2



- Step 3





Anti-Prying

Figure 4.3: Easy Installation Steps

5. OPERATION

5.1 Opening with Your Passcode

1. Enter your programmed passcode on the digital keypad.
2. Press the "#" or "E" button to confirm. The green indicator light will illuminate.
3. Within 5 seconds, rotate the knob clockwise to open the safe door.

5.2 Closing and Locking the Safe

1. Close the safe door firmly.
2. Rotate the knob counter-clockwise to engage the locking bolts. The safe is now locked.

5.3 Alarm System

The safe is equipped with a password-protection alarm system.

- If an incorrect passcode is entered three consecutive times, the alarm will activate, emitting warning beeps for 20 seconds.
- To silence the alarm, enter the correct passcode or use the emergency key.



Figure 5.1: Alarm System Indication

Video 5.1: How to Use Locksworth Small Safe. This video demonstrates the initial opening, battery installation, passcode programming, and daily operation of the safe.

6. MAINTENANCE

6.1 Battery Replacement

When the batteries are low, the red indicator light will flash during operation. Replace the batteries promptly to ensure continuous functionality.

1. Open the safe using your passcode or the emergency key.
2. Open the battery compartment cover inside the door.
3. Remove the old batteries and insert 4 new AA batteries, observing correct polarity.
4. Close the battery compartment cover.

6.2 Cleaning

To clean the safe, use a soft, damp cloth. Avoid abrasive cleaners or solvents that could damage the finish or electronic components.

7. TROUBLESHOOTING

- **Safe does not open with passcode:** Ensure batteries are not low. Re-enter the passcode carefully. If still unsuccessful, use the emergency key.
- **Forgotten passcode:** Use the emergency key to open the safe. Once open, press the reset button inside the door and follow the steps in Section 4.3 to set a new passcode.
- **Alarm sounds frequently:** This indicates multiple incorrect passcode entries. Ensure you are entering the correct code.
- **No power/keypad unresponsive:** Check battery installation and replace with fresh AA batteries if necessary. If the issue persists, use the emergency key.

8. SPECIFICATIONS

| Feature | Detail |
|--------------------|---|
| Brand | Locksworth |
| Model Number | AZ17609-BK |
| Product Dimensions | 6.69"D x 9.06"W x 6.69"H |
| Capacity | 0.23 Cubic Feet |
| Lock Type | Electronic Combination Lock, Key |
| Material | Alloy Steel |
| Color | Black |
| Special Features | Alarm System, Anti-Theft, Combination Lock, Portable, Scratch Resistant |
| Mounting Type | Under Counter Mount, Wall Mount, Floor Mount |
| Power Source | 4 x AA Batteries (not included) |
| Item Weight | 3.4 Pounds |

9. WARRANTY AND SUPPORT

For warranty information or technical support, please refer to the contact details provided with your purchase or visit the

official Locksworth website. Keep your purchase receipt as proof of purchase for any warranty claims.

