



Manuals.plus /

- › Gvyugke /
- › Gvyugke Captain 100 Wireless Gaming Headset User Manual

Gvyugke Captain 100

Gvyugke Captain 100 Wireless Gaming Headset User Manual

Model: Captain 100

INTRODUCTION

Thank you for choosing the Gvyugke Captain 100 Wireless Gaming Headset. This manual provides detailed instructions for the proper setup, operation, and maintenance of your headset. Please read this manual thoroughly before use to ensure optimal performance and longevity of your device.



Image: The Gvyugke Captain 100 Wireless Gaming Headset, showcasing its components including the headset, detachable microphone, USB wireless dongle, and 3.5mm audio cable.

PRODUCT OVERVIEW

Package Contents

- Gvyugke Captain 100 Wireless Gaming Headset
- USB Wireless Dongle
- 3.5mm Audio Cable
- USB Charging Cable
- User Manual (this document)

Key Features

- **Connectivity:** 2.4GHz Wireless, Bluetooth 5.2, and 3.5mm Wired modes.
- **Audio Drivers:** 50mm drivers with NdFeb magnet stilts and PET-grade diaphragm for immersive sound.
- **Microphone:** Environmental Noise Cancellation (ENC) for clear communication.
- **Battery Life:** Up to 40 hours of gameplay on a single charge.
- **Comfort:** Protein leather earmuffs, adjustable headband, and breathable memory foam padding.

- **Low Latency:** $\leq 20\text{ms}$ delay in 2.4GHz wireless mode.

Audio Quality Components

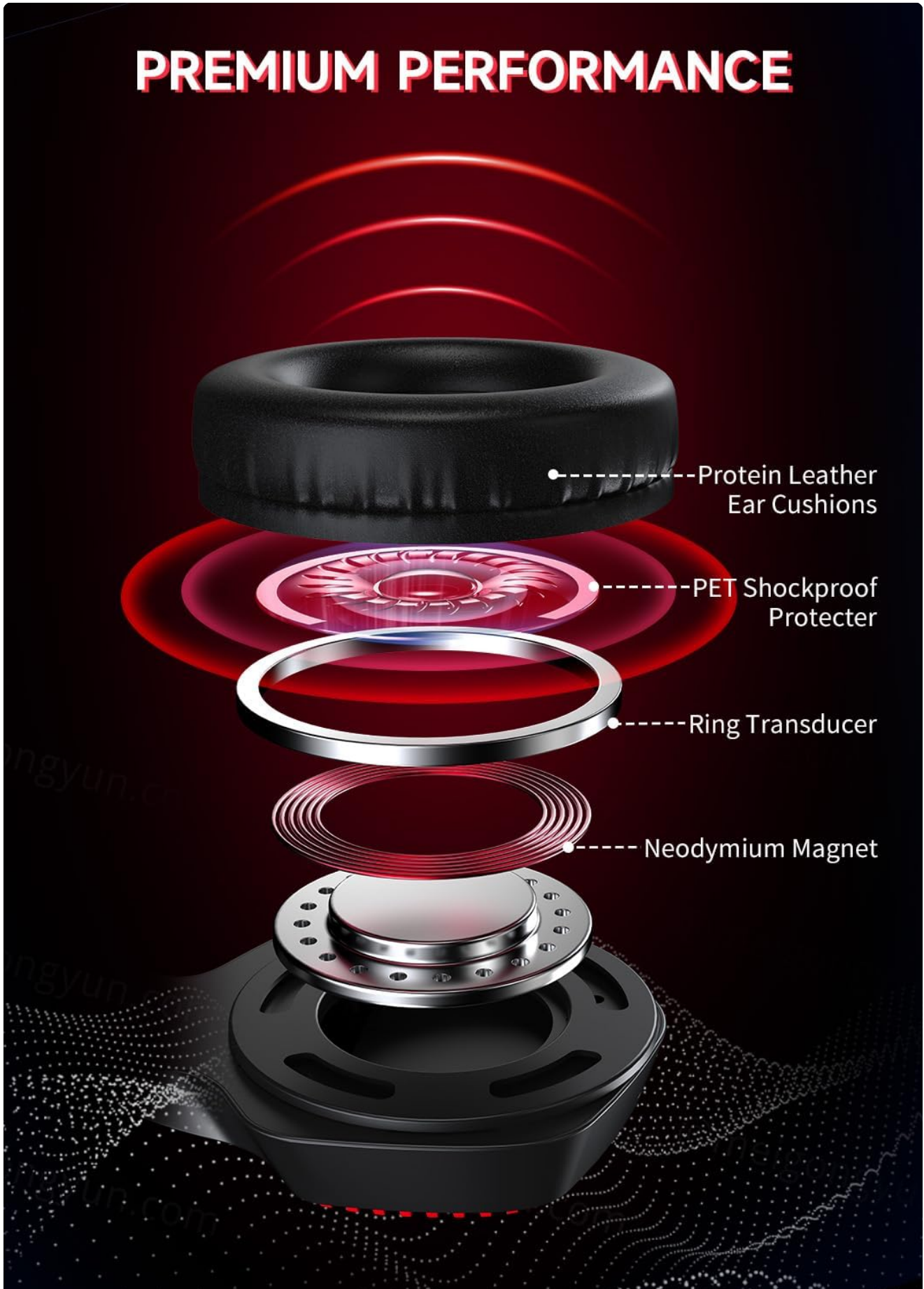


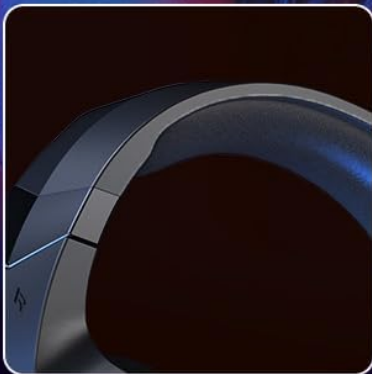
Image: An exploded diagram illustrating the internal components responsible for the headset's audio performance, such as protein leather ear cushions, PET shockproof protector, ring transducer, and neodymium magnet.

LARGER WEARING SIZE

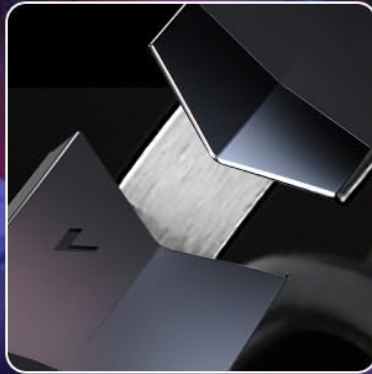


Image: A user wearing the Gvyugke Captain 100 headset, highlighting its ergonomic design and comfortable fit for various head sizes.

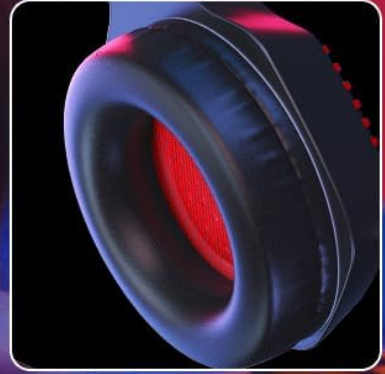
COMPANION FOR GAMING ADVENTURES



Breathable memory
foam Padding



Adjustable
Headbands



Protein
Leather Earmuffs

Image: Detailed views of the headset's comfort elements, including breathable memory foam padding, adjustable headbands, and soft protein leather earmuffs.

SETUP

1. Charging the Headset

Before first use, fully charge the headset. Connect the supplied USB charging cable to the headset's charging port and to a USB power source (e.g., computer USB port, USB wall adapter). A full charge takes approximately 3 hours. The LED indicator on the headset will show charging status.

EXTENDED POWER FOR NONSTOP PLAY



Over 40Hr
Gaming Times



< 3% Battery
Voice Alert



3 Hrs
Charging Time



Image: Illustration demonstrating the headset's battery life and charging time, highlighting over 40 hours of gaming and a 3-hour charging duration.

2. Connecting the Headset

The Gvyugke Captain 100 offers three connection methods: 2.4GHz Wireless, Bluetooth 5.2, and 3.5mm Wired.

2.1. 2.4GHz Wireless Connection (USB Dongle)

This mode provides low-latency wireless audio for devices with a USB-A port. Compatible with PS4/PS5, PC, Mac, and Nintendo Switch (audio only, microphone not supported on Switch).

1. Insert the USB wireless dongle into an available USB-A port on your device.
2. Power on the headset. The headset will automatically attempt to connect to the dongle.
3. Once connected, the indicator light on the dongle and headset will stabilize.
4. On your device's audio settings, select the headset as the input and output device.

2.4GHZ FASTER & FARTHER SUPPORTS

 Delay $\leq 20\text{ms}$

 Distance $\leq 49\text{ft}$



Image: The headset connected to a PC via the 2.4GHz USB dongle, illustrating its low latency ($\leq 20\text{ms}$) and effective range (up to 49ft).

2.2. Bluetooth 5.2 Connection

This mode is suitable for mobile devices, laptops, and other Bluetooth-enabled systems. Not compatible with Xbox series in wireless mode.

1. Ensure the headset is powered on and not connected via 2.4GHz wireless.
2. Press and hold the Bluetooth pairing button on the headset until the LED indicator flashes rapidly, indicating pairing mode.
3. On your device, enable Bluetooth and search for "Gvyugke Captain 100" in the list of available devices.
4. Select the headset to pair. Once connected, the LED indicator will stabilize.

2.3. 3.5mm Wired Connection

This mode offers universal compatibility with any device featuring a 3.5mm audio jack, including Xbox series consoles (for audio and microphone).

1. Connect one end of the supplied 3.5mm audio cable to the headset's 3.5mm port.
2. Connect the other end to the 3.5mm audio jack on your device.
3. The headset will operate in wired mode, bypassing wireless functions.

3-IN-1 GAMING HEADSET




2.4GHz WIRELESS USB Type-A   





...



 BIUETOOTH Mode Bluetooth 5.2   

...



 WIRED MODE 3.5MM Jack   

...

- a** **USB Interface: PS4/5, notebook, desktop, MAC, Switch, etc**
(Wireless mode not compatible with Xbox series)
- b** **Bluetooth: Phone, Pad, Laptop, etc.**
(Wireless mode not compatible with Xbox series)
- c** **3.5MM Jack Wired: All platform.**
(Xbox series consoles only support wired connections)

Image: A visual guide to the headset's versatile 3-in-1 connectivity, detailing compatibility for 2.4GHz wireless (USB interface), Bluetooth 5.2, and 3.5mm wired connections across various platforms.

OPERATING INSTRUCTIONS

Power On/Off

- **Power On:** Press and hold the Power button for 3 seconds.
- **Power Off:** Press and hold the Power button for 3 seconds.

Volume Control

Use the volume roller or buttons located on the headset to adjust the audio output level.

Microphone Usage

The headset features an adjustable microphone with Environmental Noise Cancellation (ENC).

- **Mute/Unmute:** Press the microphone mute button on the headset.
- **Positioning:** Adjust the flexible microphone boom for optimal voice pickup.

Adjustable Microphone

- More Flexible Mic
- "ENC" Tech Noise Cancelling

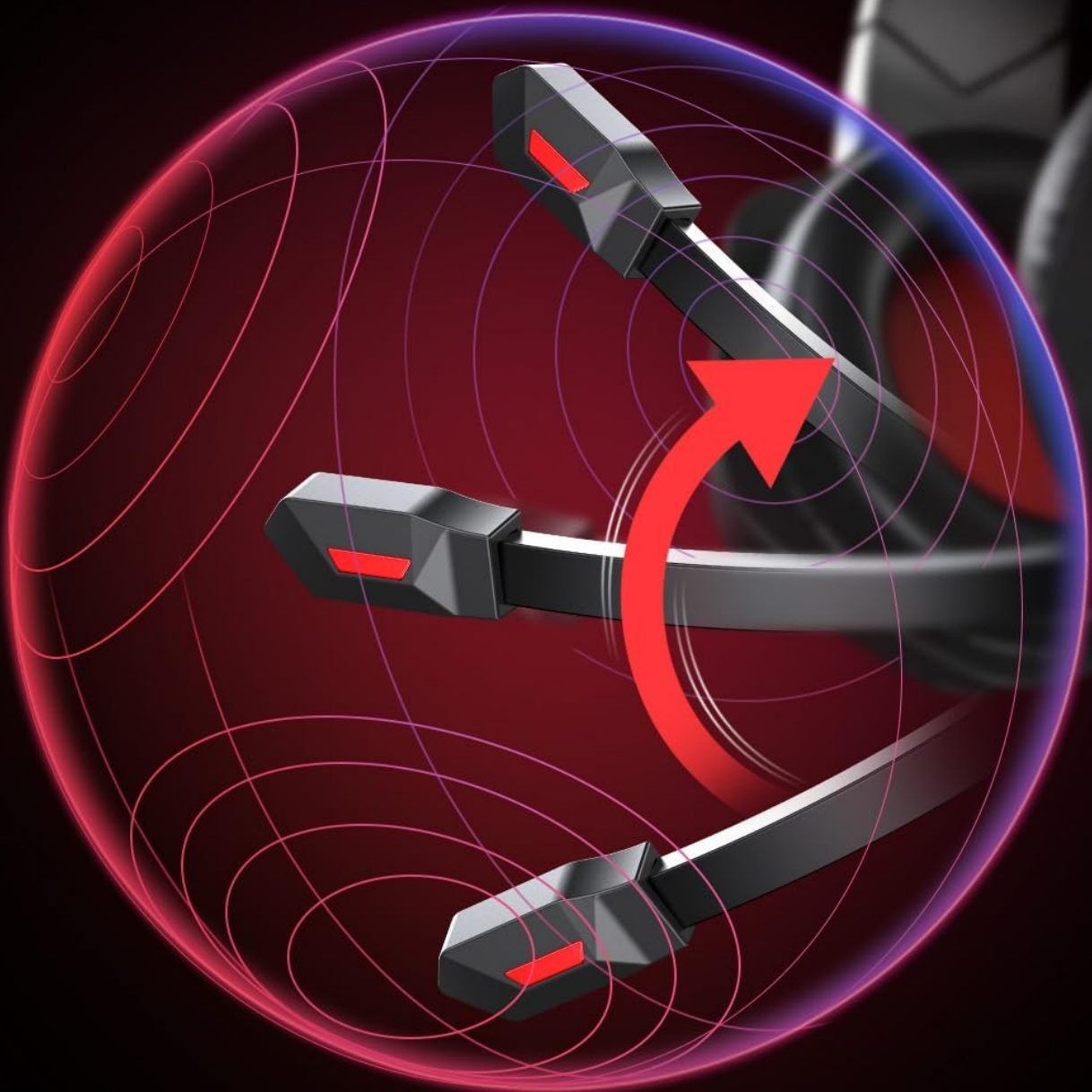


Image: A visual representation of the headset's adjustable microphone, highlighting its flexibility and integrated ENC (Environmental Noise Cancelling) technology for clear audio.

Mode Switching

The headset automatically prioritizes connections. When both 2.4GHz dongle and Bluetooth are active, you may

need to manually select the desired audio output on your device. Wired connection takes precedence when the 3.5mm cable is plugged in.

MAINTENANCE

Cleaning

- Wipe the headset with a soft, dry cloth.
- For stubborn dirt, use a slightly damp cloth with mild soap, then wipe dry immediately.
- Do not use harsh chemicals, solvents, or abrasive cleaners.
- Avoid getting moisture into the earcups or charging ports.

Storage

- Store the headset in a cool, dry place away from direct sunlight and extreme temperatures.
- Avoid placing heavy objects on the headset.
- If storing for an extended period, charge the headset periodically to maintain battery health.

TROUBLESHOOTING

No Sound / Poor Sound Quality

- Ensure the headset is powered on and fully charged.
- Check the volume levels on both the headset and your connected device.
- Verify the correct audio output device is selected in your device's sound settings.
- If using 2.4GHz wireless, ensure the USB dongle is securely plugged in and recognized by the device.
- If using Bluetooth, ensure the headset is properly paired and within range. Try re-pairing.
- If using wired connection, ensure the 3.5mm cable is fully inserted into both the headset and the device.
- Test the headset with a different device or connection method to isolate the issue.

Microphone Not Working

- Ensure the microphone is not muted (check the mute button on the headset).
- Verify the correct microphone input device is selected in your device's sound settings.
- Adjust the microphone boom closer to your mouth.
- Note: The microphone is not supported on Nintendo Switch in 2.4GHz wireless mode.
- Note: Xbox series consoles only support microphone functionality in 3.5mm wired mode.

Headset Not Connecting

- Ensure the headset has sufficient battery charge.
- For 2.4GHz, try unplugging and re-plugging the USB dongle.
- For Bluetooth, ensure the headset is in pairing mode and your device's Bluetooth is enabled. Try forgetting the device on your system and re-pairing.
- Restart both the headset and the connected device.

SPECIFICATIONS

Model Name	Captain 100
Connectivity Technology	2.4GHz Wireless, Bluetooth 5.2, 3.5mm Wired
Audio Driver Type	Dynamic Driver, 50mm
Noise Control	Environmental Noise Cancellation (ENC)
Audio Latency (2.4GHz)	≤20 Milliseconds
Battery Life	Up to 40 Hours
Charging Time	Approximately 3 Hours
Compatible Devices	PS4/5, Laptops, Desktops, MACs, Switch (audio only), Phones, Tablets, PCs, Xbox series (wired only)
Material	Leather (earmuffs)
Item Weight	0.5 Kilograms (1.1 pounds)
Package Dimensions	8.35 x 7.32 x 4.49 inches



Image: A diagram illustrating the physical dimensions of the Gvyugke Captain 100 Wireless Gaming Headset, including height, width, and microphone length.

SAFETY INFORMATION

- Avoid prolonged listening at high volumes to prevent hearing damage.
- Do not expose the headset to water or excessive moisture.
- Keep the headset away from extreme temperatures and direct heat sources.
- Do not attempt to disassemble or modify the headset. This will void the warranty.
- Dispose of batteries according to local regulations. Do not dispose of batteries in fire.

WARRANTY AND SUPPORT

Gvyugke provides technical support for its products. For assistance with your Captain 100 Wireless Gaming Headset, please refer to the contact information provided with your purchase documentation or visit the official Gvyugke website.

This product comes with a standard manufacturer's warranty. Please retain your proof of purchase for warranty claims. The warranty covers defects in materials and workmanship under normal use. It does not cover damage caused by misuse, accidents, unauthorized modifications, or normal wear and tear.