

Kinhank K18G

Kinhank 18.4" 4K Portable Monitor K18G User Manual

Model: K18G

1. INTRODUCTION

This manual provides detailed instructions for the setup, operation, and maintenance of your Kinhank 18.4" 4K Portable Monitor (Model K18G). Please read this manual thoroughly before using the product to ensure proper functionality and to maximize your user experience. Keep this manual for future reference.



The Kinhank 18.4 inch 4K Portable Monitor K18G, featuring a sleek design with an integrated stand.

2. PACKAGE CONTENTS

Verify that all items listed below are included in your package. If any items are missing or damaged, please contact customer support.

- Kinhank K18G Portable Monitor
- USB Type-C to USB Type-C Cable
- HDMI to HDMI Cable
- Remote Control
- PD Charger (Power Delivery Charger)

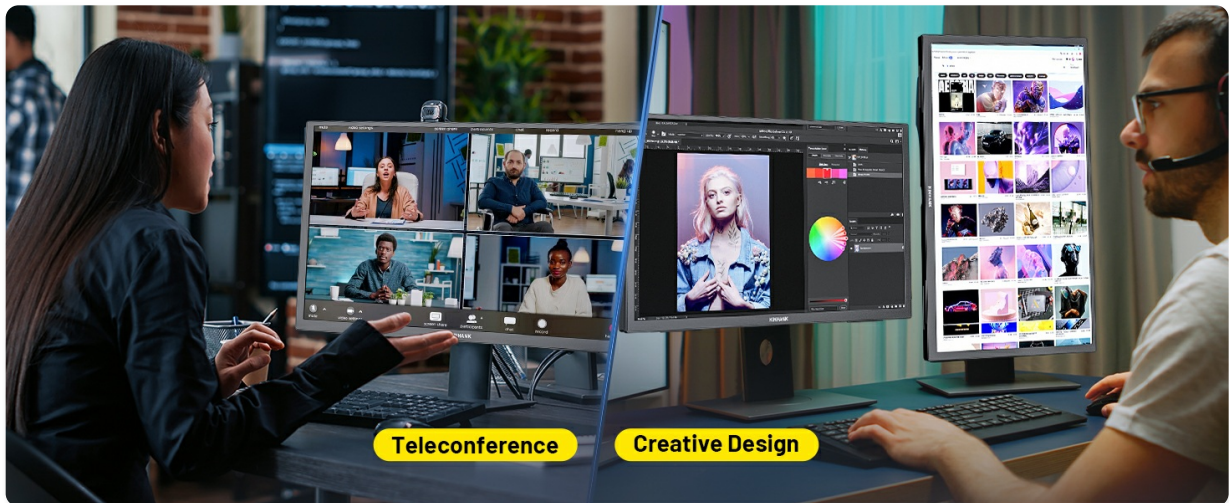


Illustration of the items included in the product package: the monitor, USB-C cable, HDMI cable, remote control, and PD charger.

3. PRODUCT FEATURES

The Kinhank K18G portable monitor is designed to enhance your productivity and entertainment with its advanced features:

- **18.4-inch 4K UHD Display:** Experience stunning visuals with a 3840 x 2160 resolution IPS panel, offering superior clarity and detail.
- **60Hz Refresh Rate & HDR:** Enjoy smooth motion and vibrant colors with HDR technology for enhanced contrast and accurate reproduction.
- **Android TV 12.0 OS:** Integrated smart TV functionality allows for streaming 4K@60fps content from platforms like Netflix and downloading various applications.
- **Wide Compatibility:** Equipped with two full-functional USB-C ports and two standard HDMI ports for connection to laptops, PCs, MacBooks, phones, tablets, and gaming consoles (PS5/4, Xbox, Switch).
- **Adjustable Stand & VESA Support:** Features a 180° adjustable stand for ergonomic viewing angles and 75mm*75mm VESA holes for wall or monitor arm mounting.
- **Portable Design:** Ultra-thin (0.62 inches) and lightweight (3 pounds) for easy transport.
- **Eye Care Features:** Includes Low Blue Light technology to reduce eye strain during extended use.
- **Dual Surround Speakers:** Built-in stereo speakers provide quality audio for various applications.

18.4"IPS LARGE SCREEN, MORE SPACE TO GET MORE DONE, EYE-FRIENDLY



Low
Blue Light



HDR



Brightness:
300 nits



Contrast Ratio
1000:1



170°
View Angle



85%
NTSC



16:9
Screen



Display Color
10.7G (8bit+FRC)

The 18.4-inch IPS large screen provides more viewing space, compared to a 15.6-inch monitor, and includes features like Low Blue Light, HDR, 300 nits brightness, 1000:1 contrast ratio, 170° view angle, 85% NTSC, 16:9 screen, and 10.76 (8bit+FRC) display color.

ANDROID TV 12.0 SYSTEM

Make K18G portable monitor like a portable smart TV, supports watching real 4K@60Hz Netflix videos, download apps



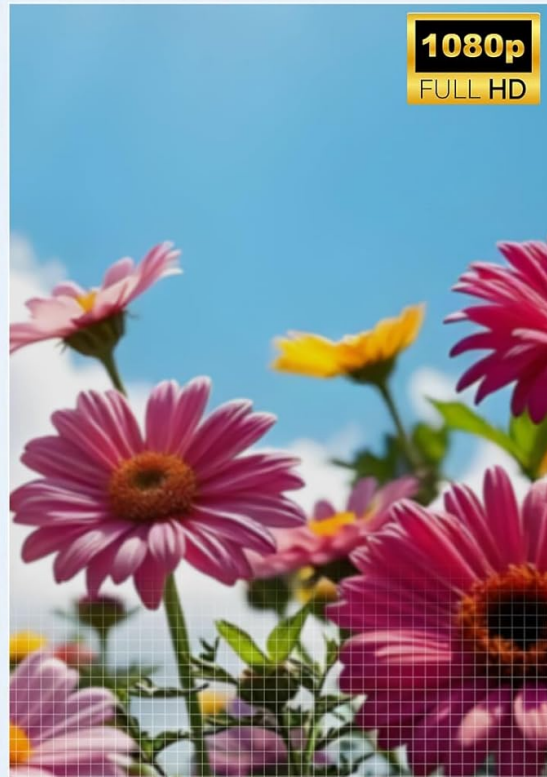
The monitor features the Android TV 12.0 system, enabling access to streaming services like Netflix, YouTube, Disney+, Hulu, and more, making it function like a smart TV.

4K@60HZ UHD HIGH RESOLUTION

Experience incredible sharpness, vibrant colors and stunning detail that Full HD can't match!



4K UHD (3840*2160P)



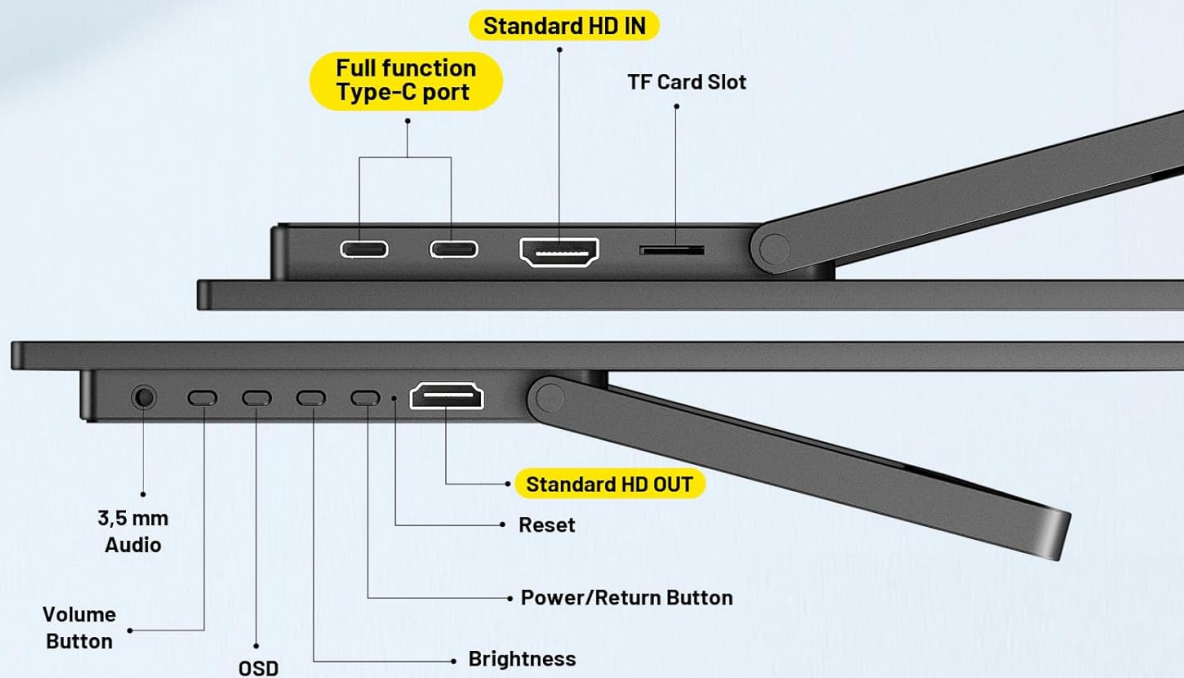
FULL HD (1920*1080P)

Visual comparison demonstrating the superior sharpness, vibrant colors, and detail of 4K UHD (3840x2160P) resolution compared to Full HD (1920x1080P).

4. PHYSICAL OVERVIEW AND PORTS

Familiarize yourself with the monitor's physical components and connection ports.

WIDE DEVICES COMPATIBILITY



Detailed view of the monitor's side profile, illustrating the location of the 3.5mm Audio jack, Volume Button, OSD button, Power/Return Button, Reset button, Brightness controls, Standard HD OUT port, TF Card Slot, Standard HD IN port, and two Full Function Type-C ports.

Port Descriptions:

- **Full Function Type-C Port:** Supports power input, video signal transmission, and data transfer.
- **Standard HD IN Port:** Connects to devices via HDMI for video and audio input.
- **Standard HD OUT Port:** For outputting video/audio to another display.
- **TF Card Slot:** For expanding storage or accessing files from a TF card.
- **3.5mm Audio Jack:** For connecting external headphones or speakers.
- **Power/Return Button:** Powers the monitor on/off and acts as a return function in menus.
- **Volume Button:** Adjusts audio output volume.
- **OSD Button:** Accesses the On-Screen Display menu for settings adjustments.
- **Brightness Controls:** Adjusts screen brightness.
- **Reset Button:** Resets the monitor to factory settings.

5. SETUP GUIDE

Follow these steps to connect your monitor to various devices.

General Connection Notes:

- Always connect the external power source (PD Charger) to the monitor for stable performance, especially when connecting to devices that may not provide sufficient power or when experiencing signal issues.
- Ensure your device supports video output via USB-C (DisplayPort Alternate Mode) or HDMI.

Connecting to a Laptop/MacBook:

1. Connect the PD Charger to the monitor's USB-C power input port.
2. For USB-C video output: Use the provided USB Type-C to USB Type-C cable to connect your laptop/MacBook's full-function USB-C port to one of the monitor's full-function USB-C ports.
3. For HDMI video output: Use the provided HDMI to HDMI cable to connect your laptop's HDMI port to the monitor's Standard HD IN port.
4. The monitor should automatically detect the signal. If not, manually select the input source via the OSD menu.



The K18G portable monitor connected to a laptop, demonstrating its use as an extended display for productivity tasks like graphic design.

Connecting to a Mini PC:

1. Connect the PD Charger to the monitor's USB-C power input port.
2. Connect the Mini PC to the monitor using either a USB Type-C to USB Type-C cable (if the Mini PC supports video output via USB-C) or an HDMI to HDMI cable.
3. Ensure the Mini PC is powered on.

PORTABLE MONITOR FOR MINI PC

With full function type-C and standard HDMI ports, K18G portable laptop monitor compatible with almost all mini host on the market.

Note:

additional power supply (Included in the package) is needed.



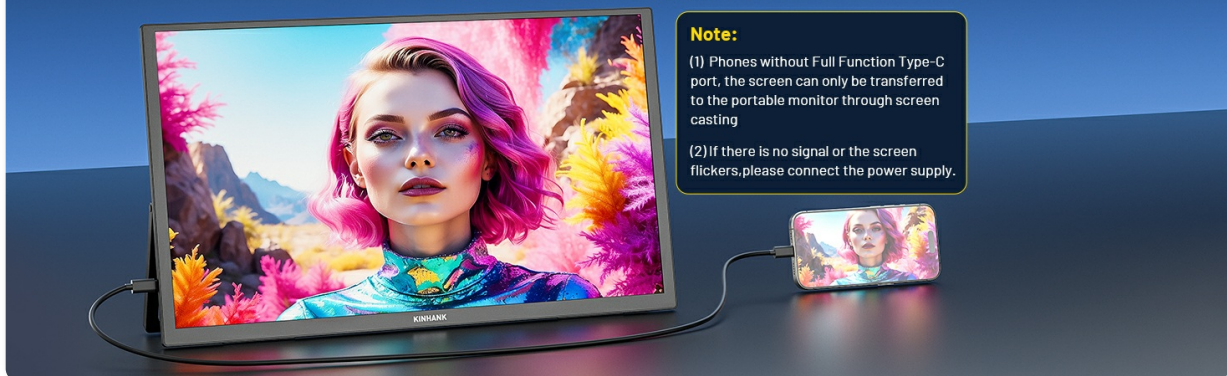
The portable monitor connected to a Mini PC, illustrating its use as a compact desktop setup. An additional power supply is required for the monitor in this configuration.

Connecting to a Smartphone/Tablet:

1. Connect the PD Charger to the monitor's USB-C power input port.
2. Use a USB Type-C to USB Type-C cable to connect your smartphone/tablet (if it supports full-function USB-C video output) to one of the monitor's full-function USB-C ports.
3. For phones without a full-function USB-C port, screen casting may be required, or an appropriate adapter (not included) might be needed.

EXTEND YOUR PHONE SCREEN

Watch videos/pictures on a bigger screen.



Note:

(1) Phones without Full Function Type-C port, the screen can only be transferred to the portable monitor through screen casting

(2) If there is no signal or the screen flickers, please connect the power supply.

A smartphone connected to the portable monitor, extending its screen for a larger viewing experience. Note: Phones without a full-function Type-C port may require screen casting. An external power supply is recommended if there is no signal or screen flickering.

Connecting to Gaming Consoles (PS5/4, Xbox, Switch):

1. Connect the PD Charger to the monitor's USB-C power input port.
2. Use an HDMI to HDMI cable to connect your gaming console's HDMI output to the monitor's Standard HD IN port.
3. Ensure the gaming console is powered on.



The portable monitor connected to various gaming devices, including a PS5, Xbox Series X, and Nintendo Switch, enabling portable gaming on a larger screen.

6. OPERATING INSTRUCTIONS

Power On/Off:

- To power on, press the Power/Return Button.
- To power off, press and hold the Power/Return Button until the screen turns off.

OSD Menu Navigation:

- Press the OSD Button to open the On-Screen Display menu.
- Use the Volume and Brightness buttons to navigate through menu options.
- Press the Power/Return Button to confirm a selection or exit a submenu.

Adjusting Volume and Brightness:

- Use the dedicated Volume Button to increase or decrease audio output.
- Use the dedicated Brightness controls to adjust screen luminance.

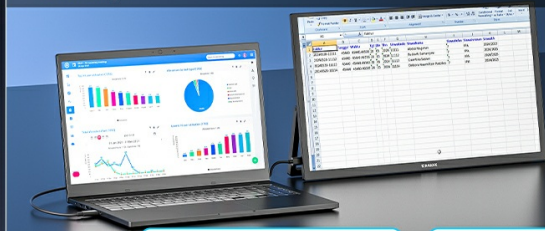
Landscape and Portrait Modes:

The monitor supports both landscape and portrait orientations, offering flexibility for various tasks.

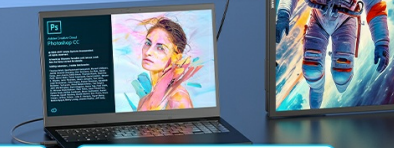
- **Landscape Mode:** Ideal for presentations, data analysis, and general viewing.
- **Portrait Mode:** Suitable for design work, reading documents, browsing web pages, and coding.

LANDSCAPE AND PORTRAIT MODES PROVIDES MORE FLEXIBILITY

- Landscape mode is more suitable for presentations and data analysis



- Portrait mode is more suitable for design, reading documents, browsing books, etc.



Duplicated Mode



Extend Mode



Second Screen Mode

The monitor can be used in both landscape and portrait orientations, supporting duplicated, extended, and second screen modes for enhanced productivity and versatility.

Android TV 12.0 OS Usage:

The integrated Android TV 12.0 OS transforms your portable monitor into a smart TV.

- Use the included remote control to navigate the Android TV interface.
- Connect the monitor to a Wi-Fi network to access online streaming services and download apps from the Google Play Store.
- Supports 4K@60fps video playback for a high-quality viewing experience.
- Utilize the TF card slot for media expansion and file transfer.

7. VESA MOUNTING AND STAND ADJUSTMENT

Integrated Adjustable Stand:

The monitor features a built-in stand that can be adjusted up to 180 degrees, allowing you to find the optimal viewing angle for comfort and productivity.

STURDY & FLEXIBLE 165° INTEGRATED KICKSTAND

Portable monitor's integrated kickstand ensures stability and durability, with the flexibility to adjust to various angles

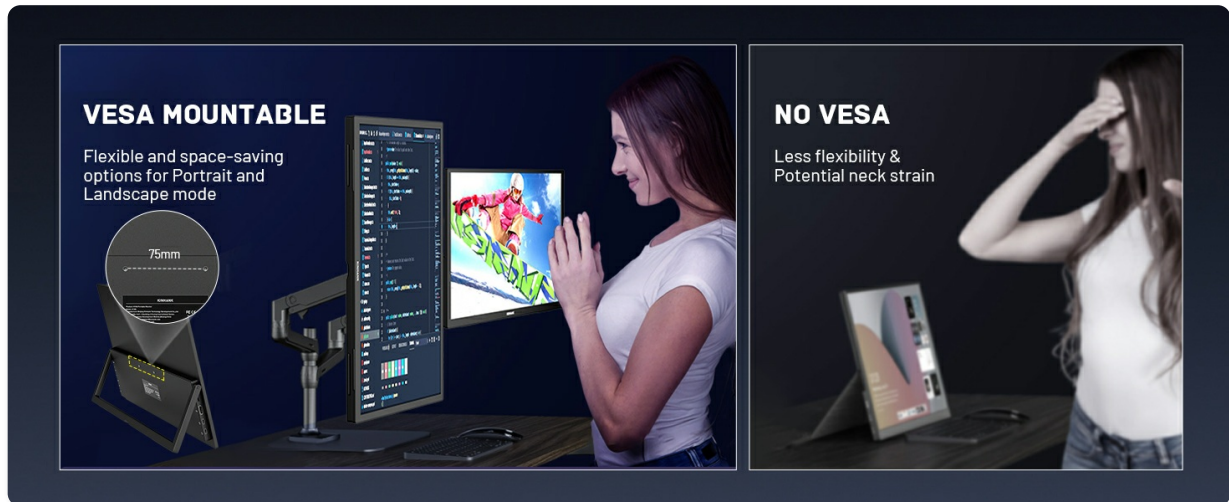


The monitor's integrated kickstand provides stability and allows for flexible angle adjustments up to 165 degrees for comfortable viewing.

VESA Mounting:

For a more permanent setup or to optimize your workspace, the monitor is equipped with standard 75mm x 75mm VESA mounting holes.

1. Ensure the monitor is powered off and disconnected from all cables.
2. Carefully remove the integrated stand if necessary (refer to specific instructions if provided with the monitor, otherwise, it's usually fixed).
3. Attach the monitor to a VESA-compatible wall mount or desk arm using appropriate screws (not included).
4. Ensure the mount can support the weight of the monitor (approximately 4.84 pounds).



The monitor is VESA mountable (75mm x 75mm), offering flexible and space-saving options for both portrait and landscape modes, which can help optimize your workspace.

8. MAINTENANCE

Cleaning the Monitor:

- Always power off the monitor and disconnect it from the power source before cleaning.
- Use a soft, lint-free cloth slightly dampened with water or a non-abrasive screen cleaner.
- Do not spray cleaner directly onto the screen.
- Avoid using harsh chemicals, alcohol, or abrasive materials, as these can damage the screen or casing.

Storage:

- When not in use, store the monitor in a cool, dry place away from direct sunlight and extreme temperatures.
- If transporting, use the original packaging or a protective case to prevent damage.

9. TROUBLESHOOTING

If you encounter issues with your monitor, refer to the following common problems and solutions:

No Signal / Black Screen:

- Ensure all cables (USB-C, HDMI, power) are securely connected to both the monitor and the source device.
- Verify that the monitor is powered on.
- Connect the external PD Charger to the monitor for stable power. Some devices may not provide enough power through a single USB-C connection.

- Check the input source selection in the OSD menu to ensure it matches the connected port (e.g., HDMI, USB-C).
- Test with a different cable or source device to rule out cable or device issues.

Screen Flickering:

- Ensure the external PD Charger is connected to the monitor. Insufficient power can cause flickering.
- Try a different cable.
- Adjust the refresh rate settings on your source device.

No Audio:

- Check the monitor's volume settings using the Volume Button or OSD menu.
- Ensure the audio output on your source device is directed to the monitor.
- If using external speakers/headphones, ensure they are properly connected to the 3.5mm audio jack.

Android TV Issues:

- Ensure the monitor is connected to a stable Wi-Fi network.
- Restart the monitor.
- Check for system updates in the Android TV settings.
- If an app is not working, try clearing its cache or reinstalling it.

10. SPECIFICATIONS

Feature	Specification
Model Number	K18G
Screen Size	18.4 Inches
Resolution	3840 x 2160 Pixels (4K UHD 2160p)
Refresh Rate	60Hz
Panel Type	IPS
Aspect Ratio	16:9
Screen Surface Description	Glossy
Product Dimensions	0.62 x 17.08 x 9.92 inches
Item Weight	4.84 pounds
Operating System	Android TV 12.0
Connectivity	2x Full-function USB-C, 2x Standard HDMI, TF Card Slot, 3.5mm Audio
VESA Compatibility	75mm x 75mm

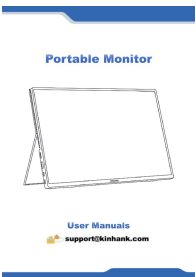



11. WARRANTY AND SUPPORT

Kinhank provides comprehensive support for your portable monitor.

- **2-Year Unlimited Warranty:** Your Kinhank portable screen for laptop is covered by a 24-month product warranty.
- **30-Day Return Service:** Enjoy a 30-day no-hassle return service from the date of purchase.
- **Lifetime Technical Support:** Benefit from lifetime technical support for any product-related inquiries or issues.
- **24-Hour Customer Service:** Dedicated customer service is available 24 hours to assist you.

For warranty claims, technical assistance, or any other support needs, please contact Kinhank customer service through the official channels provided at the time of purchase or on the manufacturer's website.

Related Documents

	<p>KINHANK K16G-Pro Portable Monitor User Manual</p> <p>Comprehensive user manual for the KINHANK K16G-Pro Portable Monitor, covering setup, features, specifications, connectivity, and troubleshooting for enhanced visual experiences.</p>
	<p>Super Console X8 User Manual: Features, Settings, and Precautions</p> <p>User manual for the KINHANK Super Console X8 retro game console. Discover features, system switching (EmuELEC/Android), controller setup, emulator management, safety precautions, packing details, and FCC compliance. Optimized for search engines.</p>
	<p>Kinhank HY300 LCD LED Projector: Portable Entertainment with Android & Wi-Fi</p> <p>Explore the Kinhank HY300, a versatile LCD LED projector featuring HDTV 1280x720 resolution, 1500:1 contrast, 30,000-hour LED life, Android 11.0, Wi-Fi, Bluetooth, and screen mirroring (Miracast, Airplay). Ideal for home cinema and presentations.</p>
	<p>Super Console X Max User Manual</p> <p>User manual for the Super Console X Max, a triple startup gaming device featuring Android TV 9, EmuELEC, and CoreELEC. Covers setup, system switching, controller configuration, Wi-Fi, and game ROMs.</p>