

PELONIS Black 30 Inch

Pelonis 30-Inch Oscillating Tower Fan Instruction Manual

Model: Black 30 Inch

1. INTRODUCTION

Thank you for choosing the Pelonis 30-Inch Oscillating Tower Fan. This fan is designed to provide efficient and quiet cooling for your home or office. Featuring multiple speed settings, a wide oscillation range, a programmable timer, and convenient remote control, it offers a versatile solution for maintaining a comfortable environment. Please read this manual thoroughly before operation to ensure proper use and maintenance.

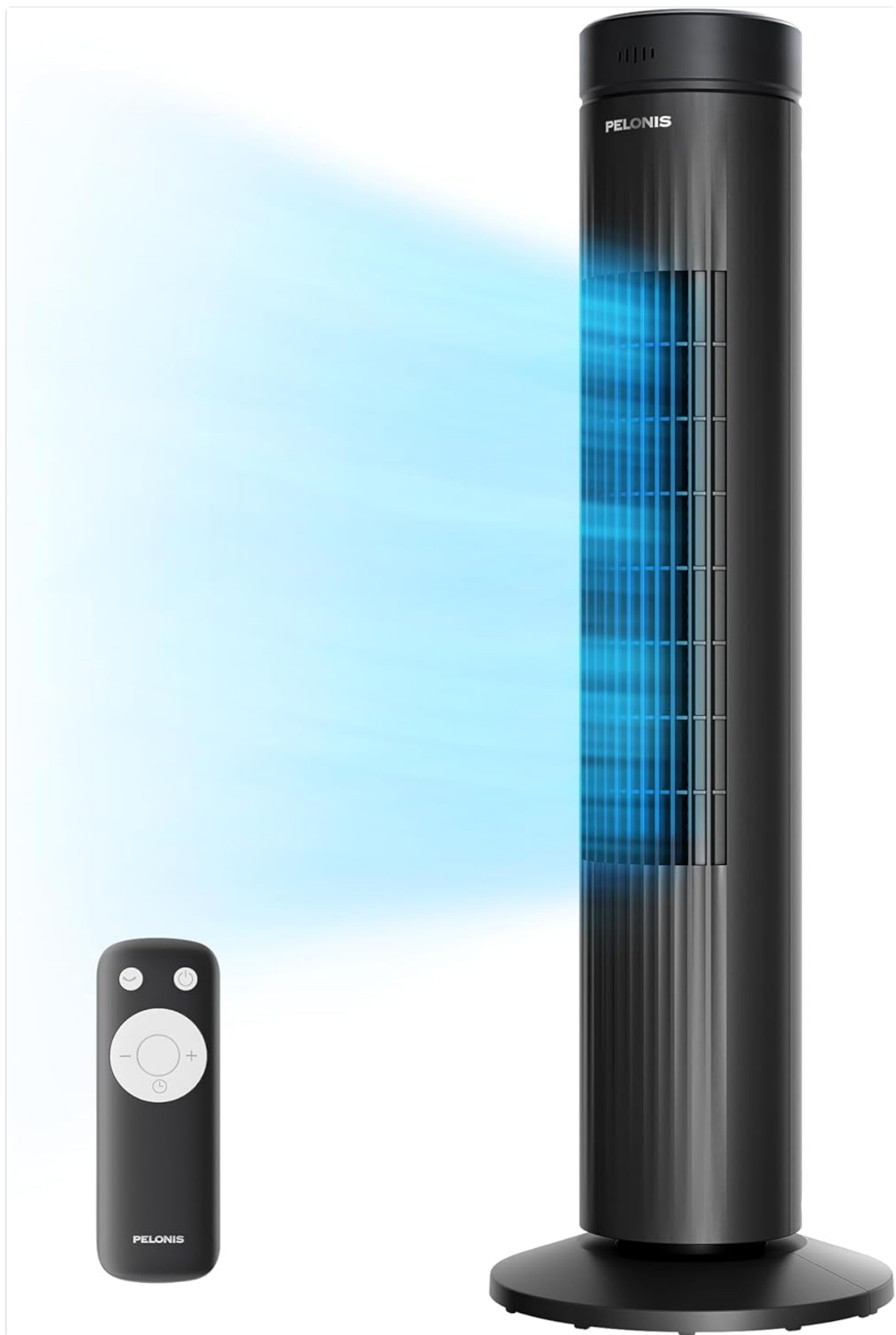


Figure 1: Pelonis 30-Inch Oscillating Tower Fan

2. IMPORTANT SAFETY INSTRUCTIONS

When using electrical appliances, basic precautions should always be followed to reduce the risk of fire,

electric shock, and injury to persons, including the following:

- Read all instructions before using this fan.
- Always unplug the fan from the power outlet before cleaning or servicing.
- Do not operate any fan with a damaged cord or plug. Discard fan or return to an authorized service facility for examination and/or repair.
- Do not run cord under carpeting. Do not cover cord with throw rugs, runners, or similar coverings. Arrange cord away from traffic area and where it will not be tripped over.
- Do not insert or allow foreign objects to enter any ventilation or exhaust opening as this may cause an electric shock or fire, or damage the fan.
- Do not block air openings or operate with any openings blocked. Keep openings free of lint, hair, and the like.
- Use this fan only as described in this manual. Any other use not recommended by the manufacturer may cause fire, electric shock, or injury to persons.
- Always place the fan on a stable, flat surface to prevent it from tipping over.
- This fan is for household use only.

3. PACKAGE CONTENTS

Please check the package contents upon opening to ensure all parts are present:

- Pelonis Tower Fan Body
- Base Piece A
- Base Piece B
- Remote Control
- User Manual (this document)

4. SETUP AND ASSEMBLY

Assembly of your Pelonis Tower Fan is quick and requires no tools. Follow these steps:

1. **Step 1: Assemble the Base**

Align the holes and slots on Base Piece A with Base Piece B and snap them together to form a single, circular base unit.

2. **Step 2: Attach Fan Body to Base**

Pass the power cord through the central opening (flute) of the assembled base. Align the bottom of the fan body with the mounting holes on the base and gently insert it.

3. **Step 3: Secure the Fan**

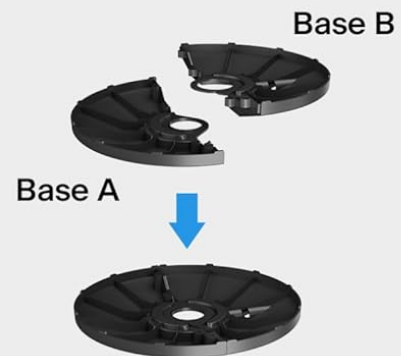
Locate the plastic nut and bolt at the base of the fan body. Align the nut with the bolt and firmly twist the plastic nut clockwise until it is tight, securing the fan body to the base.

Easy Assembly

No Tools Required

Step. 1

Align the holes and slots on Base A with Base B and snap together into a single unit.



Step. 2

Align the bottom of the fan body with the mounting holes on the base and insert.



Step. 3

Align the nut with the bolt at the base of the fan and rotate to tighten

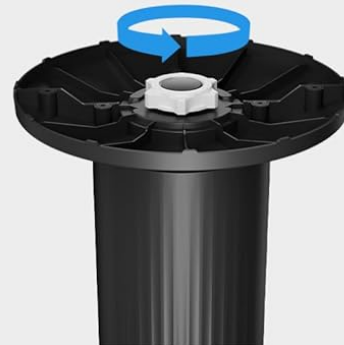


Figure 2: Easy Assembly Steps

5. OPERATING INSTRUCTIONS

Your Pelonis Tower Fan can be operated using the control panel on top of the unit or the included remote control.

5.1. Control Panel and Remote Control

The control panel features intuitive buttons for power, speed, oscillation, and timer. The remote control offers the same functionality for convenient operation from a distance. Ensure the remote control has a working AAA battery (not included).



Figure 3: Fan Control Panel Overview

5.2. Fan Speeds

The fan offers 3 speed settings: Low, Medium, and High. Press the speed button to cycle through the settings and adjust the airflow to your preference.

Unrivalled Cooling Performance

Customize your comfort with 3 speed settings



Low



Medium



High



Figure 4: Customizable Speed Settings

5.3. Oscillation Function

Activate the 90° oscillation function to distribute cool air across a wider area. Press the oscillation button to start or stop the fan's side-to-side movement.

Ultra-Wide 90° Oscillation

Enjoy comfortably cool coverage throughout the room



Figure 5: Ultra-Wide 90° Oscillation

5.4. Timer Setting

The fan features a programmable timer up to 7 hours. Use the timer button to set the desired operating duration before the fan automatically turns off. This is ideal for energy saving or nighttime use.



Figure 6: Up to 7 Hour Timer

5.5. Operating Modes

The fan offers different operating modes for enhanced comfort:

- **Normal Wind:** Consistent airflow at the selected speed.
- **Natural Wind:** Simulates natural breeze by varying fan speed.
- **Sleep Wind:** Gradually decreases fan speed and operates quietly for undisturbed sleep.
- **ECO Mode:** Energy-saving mode that adjusts fan speed based on ambient temperature.

5.6. Quiet Operation

Designed for minimal noise, this fan operates at an ultra-quiet 37 dB, making it suitable for bedrooms, offices, and other quiet environments.

Whisper-Quite Cool Comfort

Effortless cooling, soundless sleeping

The image shows a tall, black Pelonis tower fan in a bedroom. The fan is emitting a blue light effect. Below the fan, there is a sound level comparison bar. The bar has three points: 10dB (Falling Leaves), 37dB (PELONIS), and 45dB (Library). The PELONIS point is marked with a blue triangle and the text 'PELONIS' above it.

Sound Level (dB)	Source
10dB	Falling Leaves
37dB	PELONIS
45dB	Library

Figure 7: Whisper-Quiet Cool Comfort

6. MAINTENANCE AND CLEANING

Regular cleaning will help maintain your fan's performance and extend its lifespan. Always unplug the fan before cleaning.

- **Exterior Cleaning:** Use a soft, damp cloth to wipe the exterior surfaces of the fan. Do not use abrasive cleaners or solvents.

- **Dust Removal:** Use a vacuum cleaner with a brush attachment or compressed air to remove dust from the air intake and exhaust grilles.
- Do not immerse the fan in water or allow water to drip into the motor housing.
- For long-term storage, cover the fan to protect it from dust and store it in a cool, dry place.

7. TROUBLESHOOTING

If you experience issues with your fan, please refer to the following common problems and solutions:

Problem	Possible Cause	Solution
Fan does not turn on.	No power supply; Power cord not securely plugged in; Overload protection activated.	Ensure the fan is plugged into a working electrical outlet. Check the power cord connection. If the fan has an overload protection plug, reset it by unplugging and replugging.
Weak airflow.	Air intake/exhaust grilles are blocked by dust; Fan speed is set too low.	Clean the air grilles to remove any obstructions. Increase the fan speed setting.
Fan is noisy.	Fan is not on a stable surface; Internal components require cleaning.	Ensure the fan is placed on a flat, stable surface. Clean the fan thoroughly, especially the internal components if accessible (refer to maintenance section).
Remote control not working.	Battery is dead or incorrectly inserted; Obstruction between remote and fan.	Replace the battery (AAA). Ensure there is a clear line of sight between the remote and the fan's receiver.
Base feels wobbly.	Base not securely tightened.	Ensure the plastic nut securing the fan body to the base is firmly twisted until tight.

8. SPECIFICATIONS

Feature	Detail
Brand	PELONIS
Model	Black 30 Inch
Product Dimensions	22.7D x 20.7W x 109H Centimetres
Colour	Black
Material	Plastic
Noise Level	37 dB
Controller Type	Remote Control, Touchpad Control
Special Features	Dust Resistant, Lightweight, Oscillating, Quiet Operation, Remote Controlled

Feature	Detail
Assembly Required	Yes (Tool-free)
Batteries Required (Remote)	Yes



Figure 8: Sleek, Compact Design and Dimensions


9. WARRANTY AND SUPPORT

For warranty information or technical support, please refer to the warranty card included with your product

or visit the official PELONIS website. Keep your purchase receipt as proof of purchase.

© 2025 PELONIS. All rights reserved.

Related Documents - Black 30 Inch

<div><div>User Manual of Product 1:</div><div>PELONIS Pedestal Fan, 16" Pedestal Remote Control Oscillating Stand Up Fan, 7-hour Timer, 3-Speed, and Adjustable Height, Night Electric Cooling Fans for Home Office Bedroom Use</div><div>User Manual of Product 2:</div><div>Lasko 1820 18" Elegance & Performance Adjustable Pedestal Fan, White, Features Oscillating Movement 18 Inch Fan Model: 181820</div></div>	<p>PELONIS Pedestal Fan Owner's Manual - Models PFS40A4BBB, PFS40A4BWW</p> <p>Comprehensive owner's manual for PELONIS 16-inch Pedestal Fans (PFS40A4BBB, PFS40A4BWW) with remote control, 7-hour timer, 3-speed settings, and adjustable height. Includes safety rules, installation, operation, servicing, and cleaning instructions. Also covers Lasko 18-inch Adjustable Performance Pedestal Fan Model 1820.</p>
<div><div>User Manual of Product 1:</div><div>PELONIS 16" Pedestal Remote Control Oscillating Stand Up Fan, 7-hour Timer, 3-Speed and Adjustable Height, PFS40A4BBB, Supreme 16" Black</div><div>User Manual of Product 2:</div><div>PELONIS 16" Pedestal Remote Control Oscillating Stand Up Fan, 7-hour Timer, 3-Speed and Adjustable Height, PFS40A4BWW, Supreme 16" Black</div></div>	<p>PELONIS 16" Pedestal Fan Owner's Manual PFS40A4BBB, PFS40A4BWW</p> <p>Comprehensive owner's manual for the PELONIS 16-inch Pedestal Remote Control Oscillating Stand Up Fan (models PFS40A4BBB, PFS40A4BWW), featuring a 7-hour timer, 3-speed settings, and adjustable height. Includes safety rules, installation instructions, operation guide, user servicing, and cleaning procedures.</p>
<div><div>User Manual of Product 1:</div><div>PELONIS 16" Pedestal Remote Control Oscillating Stand Up Fan, 7-hour Timer, 3-Speed, and Adjustable Height, Electric Cooling Fans for Home Office Bedroom Use</div><div>User Manual of Product 2:</div><div>PELONIS 16" Pedestal Remote Control Oscillating Stand Up Fan, 7-hour Timer, 3-Speed, and Adjustable Height, PFS40A4BBB, Supreme 16" Black</div></div>	<p>PELONIS 16" Pedestal Remote Control Oscillating Stand Fan User Manual</p> <p>User manual for PELONIS 16-inch Pedestal Remote Control Oscillating Stand Fans, models PFS40A4BBB and PFS40A4BWW. Features include a 7-hour timer, 3-speed settings, and adjustable height, designed for home, office, and bedroom use. This guide covers safe operation, installation, usage instructions for the remote and fan body, user servicing, and cleaning.</p>
<div><div>User Manual of Product 1:</div><div>PELONIS PFS45A5BBB 16 inch 5 Blade Oscillating Adjustable Standing Pedestal Remote, LED Display, 5-Speed Cooling and 7-Hour Timer Fan, Black</div><div>User Manual of Product 2:</div><div>PELONIS 16" Pedestal Remote Control Oscillating Stand Up Fan, 7-hour Timer, 3-Speed, and Adjustable Height, Electric Cooling Fans for Home Office Bedroom Use</div></div>	<p>PELONIS PFS45A5BBB and PFS40A4BBB Series Pedestal Stand Fan Owner's Manual</p> <p>Comprehensive owner's manual for PELONIS PFS45A5BBB, PFS40A4BBB, and PFS40A4BWW series pedestal stand fans, covering important safety instructions, installation, remote control and body operation, maintenance, cleaning, and user servicing for optimal performance and longevity.</p>
<div><div><div><div>PELONIS</div><div>OWNER'S MANUAL</div><div>16-Inch Adjustable Oscillating Pedestal Fan with Quiet DC Motor</div><div></div><div>Model: PSPF18AR40B</div><div>READ AND SAVE THESE INSTRUCTIONS</div><div>Read this manual before you use the fan for the first time.</div></div></div></div>	<p>Pelonis 16-Inch Adjustable Oscillating Pedestal Fan Owner's Manual</p> <p>This manual provides instructions for the Pelonis 16-Inch Adjustable Oscillating Pedestal Fan with Quiet DC Motor, model PSPF18AR40B. It includes important safety instructions, installation guidance, operation details, troubleshooting, and warranty information.</p>

User Manual of Product 1:
PELONIS PFS45A5BBB 18 inch 5-Blade Oscillating,
Adjustable Standing Pedestal Fan with LED Display, 5 Speed
Timing and 7 Hour Timer Fan, Black

User Manual of Product 2:
PELONIS 18" Pedestal Remote Control, Oscillating Direct-Drive
Fan 7 Motor, 3-Speed and Adjustable Height
PFS40A4BBB, Supreme 18" Black

[PELONIS Stand Fan Owner's Manual: PFS45A5BBB, PFS40A4BBB, PFS40A4BWW](#)

Discover the PELONIS Stand Fan Owner's Manual for models PFS45A5BBB, PFS40A4BBB, and PFS40A4BWW. This comprehensive guide covers installation, safe operation, remote control functions, LED display settings, 5-speed and 3-speed options, 7-hour timer, oscillation control, tilt adjustment, height adjustment, maintenance, cleaning, and user servicing instructions for these oscillating pedestal fans with LED displays and remote controls.