

ZEMOJ ZQ01104

ZEMOJ 36 LED Par Light Instruction Manual

Model: ZQ01104

1. INTRODUCTION

Thank you for choosing the ZEMOJ 36 LED Par Light. This versatile and portable lighting solution is designed to enhance various events, from weddings and parties to live shows and church gatherings. Equipped with a long-lasting rechargeable battery and multiple control modes, it offers vibrant RGB lighting effects without the need for constant power access. This manual provides essential information for setting up, operating, and maintaining your new par lights.



Figure 1: ZEMOJ 36 LED Par Lights

2. PACKAGE CONTENTS

Please check the package carefully to ensure all items are present and in good condition:

- Stage Par Light x 2
- Adapter x 2
- Bracket x 4 and Screw x 4

- Instruction manual x 2
- Remote Control x 2



Figure 2: Included Accessories

3. FEATURES

The ZEMOJ 36 LED Par Light boasts a range of features designed for optimal performance and user convenience:

- **Long-Lasting Rechargeable Battery:** Equipped with a 5000mAh lithium battery, offering 4-14 hours of runtime depending on the color mode, and fully charges in 4-6 hours. Ideal for outdoor events or locations without direct power access.
- **Vivid 36-LED Lighting:** Features 36 high-brightness RGB LEDs (12 red, 12 blue, 12 green + 1 WRGB) for dynamic and vibrant lighting. Provides 36W total power with low energy consumption and a 100,000-hour lifespan.
- **Versatile Control & Multiple Modes:** Easily adjust colors, dimming, and strobe effects using the included remote control. Supports DMX512, sound activation, master-slave, and auto modes for professional-grade

customization.

- **Easy Installation & Adjustable Design:** Features a dual-handle design and 360-degree adjustable angle (secured by manual screws) for flexible positioning. Can be mounted on T-bar brackets, placed on the floor, or hung.
- **Low Noise Operation:** Designed for quiet performance, ensuring minimal distraction during events.



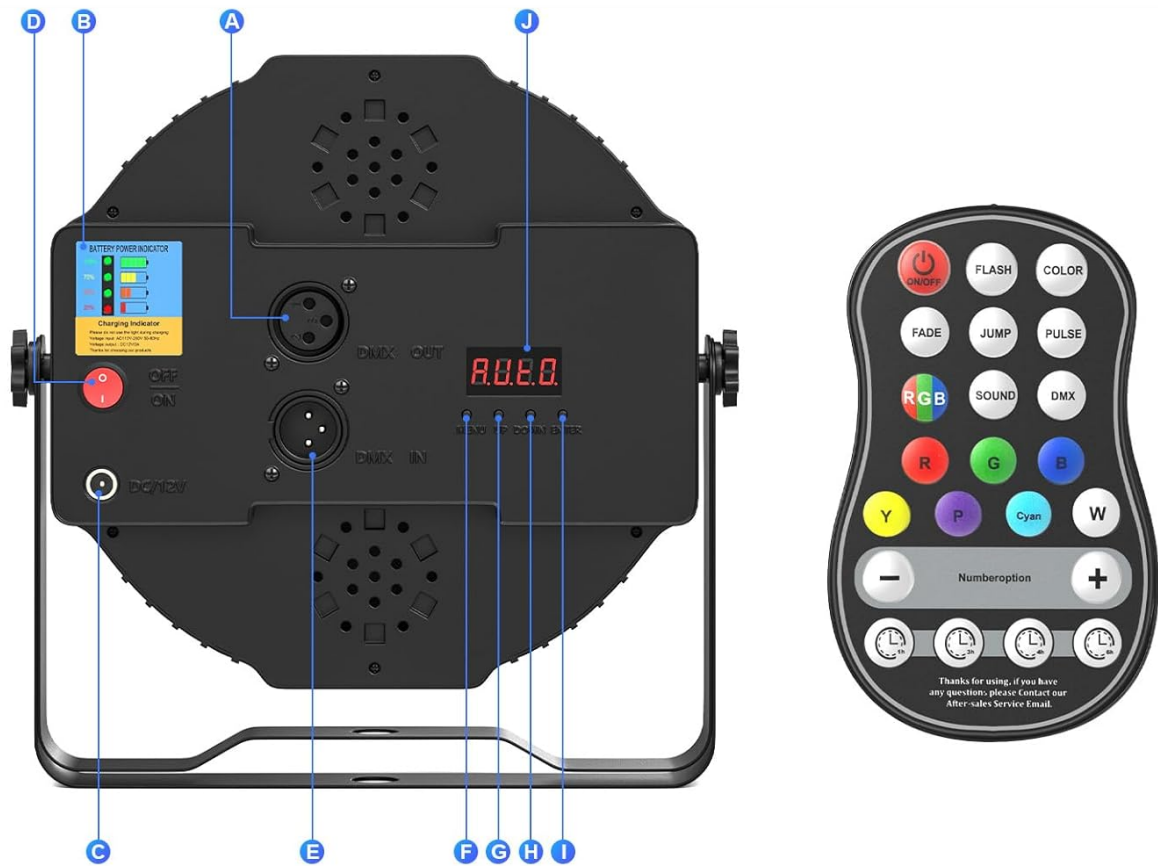
Figure 3: Multi-function Par Light Overview

4. SETUP

4.1 Attaching the Brackets

The par light comes with two brackets for versatile positioning. To attach them:

1. Align the holes on the brackets with the screw holes on the sides of the light.
2. Insert the provided screws through the holes and tighten them securely.
3. Adjust the angle of the light by loosening the screws, setting the desired angle, and then re-tightening them.



A	DMX Out	F	Menu
B	Charging indicator	G	Up
C	Charging Port	H	Down
D	ON/OFF	I	Enter
E	DMX In	J	Digital

Figure 4: Rear Panel and Bracket Attachment Points

4.2 Charging the Battery

Before first use, fully charge the par light. The charging indicator on the rear panel will show the battery status.

1. Connect the provided 12V 2A adapter to the charging port (DC 12V) on the rear of the light.
2. Plug the adapter into a standard power outlet.
3. The battery power indicator will show charging progress. A full charge typically takes 4-6 hours.
4. Once fully charged, the light can operate wirelessly for 4-14 hours depending on the selected mode and color intensity.

Wireless Rechargeable Timing Par Light



5000mAh

A full charge typically
takes 9 hours

Figure 5: Battery and Charging Details

5. OPERATING INSTRUCTIONS

5.1 Power On/Off

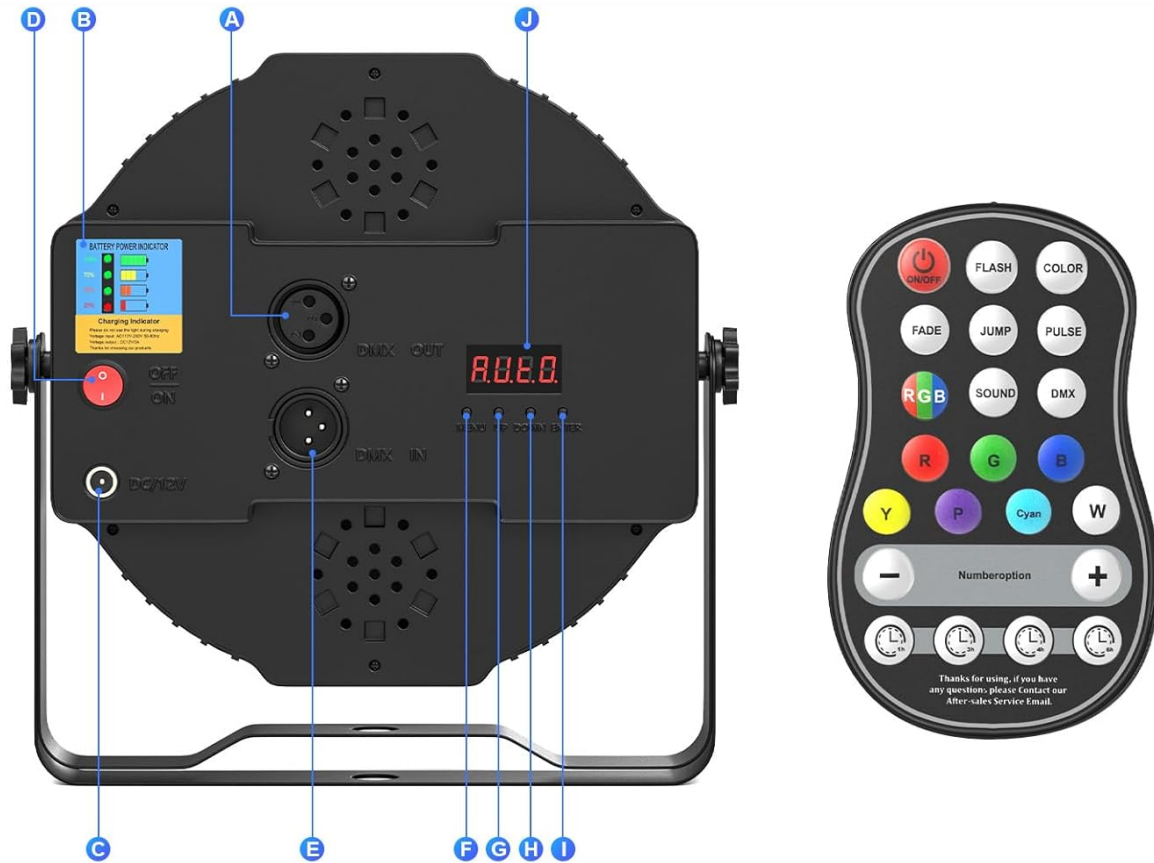
Locate the red ON/OFF switch on the rear panel of the light. Flip it to 'ON' to power on the device and 'OFF' to power it down.

5.2 Remote Control Operation

The included remote control provides convenient access to various lighting modes and effects:

- **ON/OFF:** Power the light on or off.
- **FLASH:** Activates a rapid strobe effect.
- **COLOR:** Cycles through various static colors.
- **FADE:** Smoothly transitions between colors.

- **JUMP:** Instantly switches between colors.
- **PULSE:** Creates a pulsating color effect.
- **SOUND:** Activates sound-sensitive mode, where lights react to music or ambient sound.
- **DMX:** Switches to DMX control mode.
- **Individual Colors (R, G, B, W, Y, P, Cyan):** Select specific static colors.
- **Brightness (+/-):** Adjust the intensity of the light.
- **Timing (1/3/4/6 Hours):** Set a timer for the light to operate.



A	DMX Out	F	Menu
B	Charging indicator	G	Up
C	Charging Port	H	Down
D	ON/OFF	I	Enter
E	DMX In	J	Digital

Figure 6: Remote Control and Rear Panel Functions

5.3 DMX Control

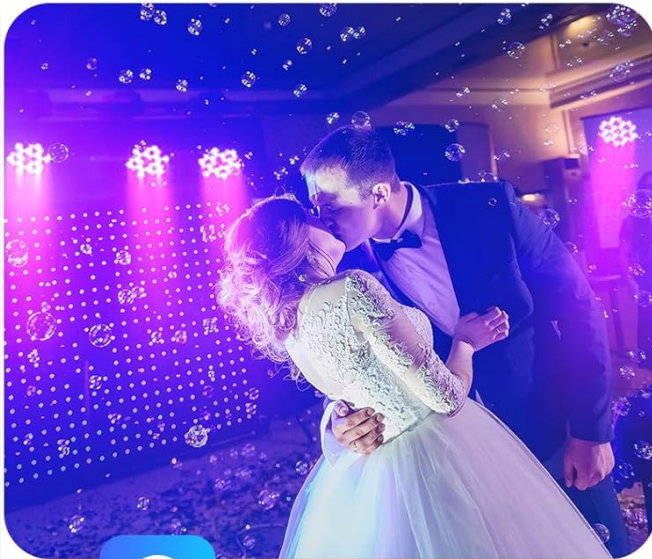
For professional setups, the light supports DMX512 control. Use the DMX IN and DMX OUT ports on the rear panel to connect to a DMX controller. The digital display will show the DMX address.

5.4 Sound Activation Mode

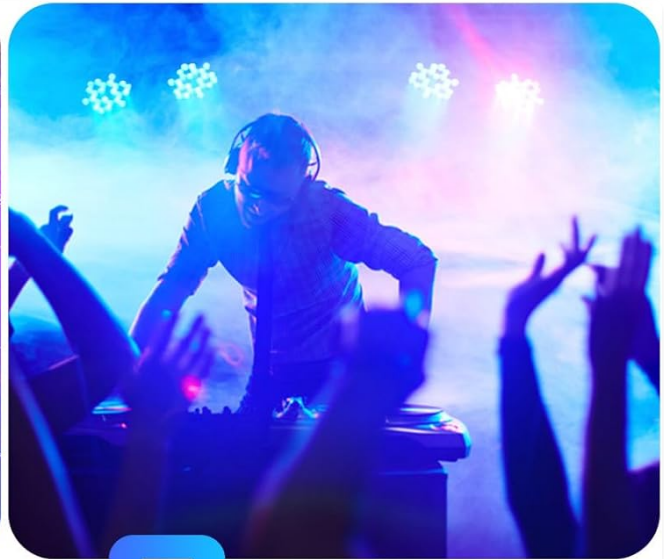
In Sound Activation mode, the lights will change patterns and colors in response to ambient sound or music. Ensure the light's built-in microphone is not obstructed for optimal performance.

5.5 Master-Slave Mode

Connect multiple ZEMOJ 36 LED Par Lights using DMX cables to synchronize their effects. Set one unit as the 'Master' and others as 'Slave' units to create a cohesive lighting display.



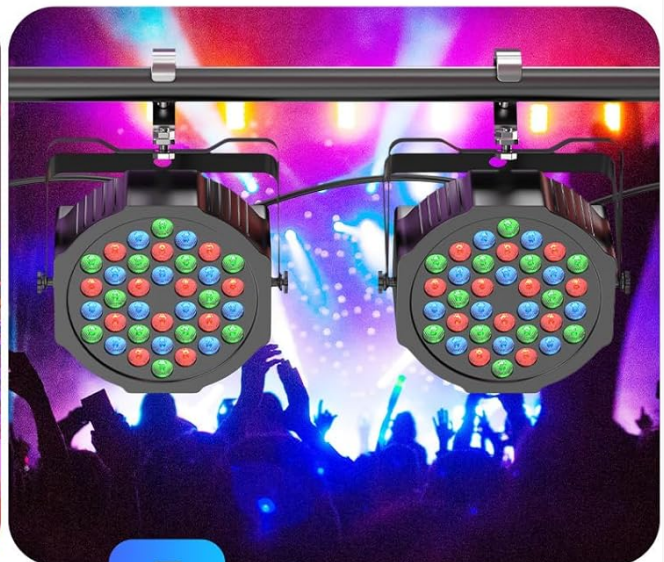
Remote Control



DMX Control



Sound Activated



Master-Slave

Figure 7: Control Modes in Action

6. MAINTENANCE

To ensure the longevity and optimal performance of your ZEMOJ 36 LED Par Light, follow these maintenance guidelines:

- **Cleaning:** Regularly wipe the exterior of the light with a soft, dry cloth to remove dust and debris. Do not use abrasive cleaners or solvents.
- **Storage:** When not in use, store the lights in a cool, dry place away from direct sunlight and extreme temperatures.
- **Battery Care:** For extended storage, it is recommended to charge the battery to about 50% every 3 months to maintain battery health.

- **Inspection:** Periodically check cables, connections, and mounting hardware for any signs of wear or damage.

7. TROUBLESHOOTING

If you encounter any issues with your ZEMOJ 36 LED Par Light, refer to the following common problems and solutions:

Problem	Possible Cause	Solution
Light does not turn on.	Battery is depleted. Power switch is off.	Charge the battery. Ensure the ON/OFF switch is in the 'ON' position.
Remote control is not working.	Battery tab not removed. Obstruction between remote and light. Remote out of range.	Remove the plastic battery tab from the remote. Ensure clear line of sight. Move closer to the light.
Colors are not blending smoothly.	Incorrect mode selected.	Ensure 'FADE' mode is selected for smooth transitions. Reset the light if necessary.
Sound activation is not responsive.	Microphone obstructed. Low sound volume.	Ensure the microphone on the light's rear panel is clear. Increase music/sound volume.

8. SPECIFICATIONS

- **Model:** ZQ01104
- **Color:** 2PCS (referring to the quantity in the package)
- **Material:** Plastic
- **Light Source Type:** Light Emitting Diode (LED)
- **Power Source:** Battery Powered (Rechargeable Lithium-Ion)
- **Battery Capacity:** 5000mAh
- **Charging Input:** 12V 2A
- **Item Weight:** 1.9 Pounds
- **Product Dimensions:** 6.9"L x 3.9"W x 6.9"H
- **Manufacturer:** Dongguan Tong Global Industrial Co., Ltd.
- **Control Modes:** Remote Control, DMX512, Sound Activation, Master-Slave, Auto

9. WARRANTY & SUPPORT

ZEMOJ products are manufactured to the highest quality standards. For any product-related inquiries, technical support, or warranty claims, please contact our customer service team through the retailer's platform or visit the official ZEMOJ store on Amazon. Please retain your proof of purchase for warranty validation.

