

Manuals.plus /

› iienjoy /

› iienjoy Kintsugi Repair Kit Instruction Manual

iienjoy Kintsugi Repair Kit

iienjoy Kintsugi Repair Kit Instruction Manual

Model: Kintsugi Repair Kit

Brand: iienjoy

1. INTRODUCTION TO KINTSUGI REPAIR

The iienjoy Kintsugi Repair Kit allows for the restoration of broken items such as ceramics, glass, and wood. Kintsugi is the Japanese art of repairing broken pottery with lacquer dusted or mixed with powdered gold, silver, or platinum. This method treats breakage and repair as part of the object's history, rather than something to disguise. The kit provides the necessary materials to perform these repairs, transforming damaged items into unique pieces.




Image 1.1: A light blue plate with a red pattern, shown broken into two pieces on the left, and fully repaired with visible gold Kintsugi lines on the right.

This kit is suitable for repairing various materials including ceramics, glass, metal, jade, wood, and stone. The adhesive is food-safe, allowing repaired items to be used for food and beverages after proper curing.

2. KIT CONTENTS

The iienjoy Kintsugi Repair Kit includes the following components:

WHAT'S IN THE PACKAGE ?



Glue x1



Push Rod x1



Silicone Mixing Coasters x2



Wooden Chisel x1



Silicone Brush x2



Clay Powder x1



Powder Pigment x4



Instruction Manual *1



Silicone Mixing Sticks x2



Spoons x2



Gloves x2

Image 2.1: All components of the Kintsugi Repair Kit, clearly labeled, including the glue, various powders, and tools.

- **50ml Food-Safe AB Epoxy Glue:** A two-part adhesive for strong bonds.
- **4 Metallic-Colored Pigments (5g each):** Gold, Antique Gold, Brown Gold (Bronze), and Silver powders to mix with the glue.
- **10g White Clay Powder:** For filling gaps or missing pieces.
- **Gloves:** For hand protection during the repair process.
- **2 Wooden Sticks:** For mixing the epoxy and pigments.
- **2 Reusable Silicone Mixing Coasters:** Surfaces for mixing materials.
- **2 Reusable Silicone Mixing Sticks:** For precise mixing and application.
- **2 Silicone Brushes:** For applying the mixture.
- **2 Spoons:** For measuring powders.
- **1 Scraper:** For removing excess cured material.
- **2 Push Rods:** For dispensing glue from the tubes.

3. SAFETY INFORMATION

- **Avoid Contact:** Prevent contact with skin and eyes. In case of contact, rinse immediately with plenty of water.
- **Ventilation:** Work in a well-ventilated area. Do not breathe fumes directly.
- **Ignition Sources:** Keep away from ignition sources.
- **Ingestion:** If ingested, seek medical attention immediately.
- **Children:** Keep out of reach of children.
- **Gloves:** Always wear the provided gloves to protect your hands.

4. PREPARATION FOR REPAIR

1. **Clean the Item:** Ensure the broken pieces are clean and free from dust, grease, or debris. Wash and dry them thoroughly if necessary.
2. **Prepare Workspace:** Set up a clean, well-ventilated work area. Lay down protective material to prevent spills or damage to your work surface.
3. **Gather Tools:** Have all kit components readily accessible, including the glue, desired pigment, mixing tools, and gloves.
4. **Wear Gloves:** Put on the provided gloves before handling any materials.

5. OPERATING INSTRUCTIONS: REPAIR PROCESS

Follow these steps to repair your broken item using the Kintsugi method:

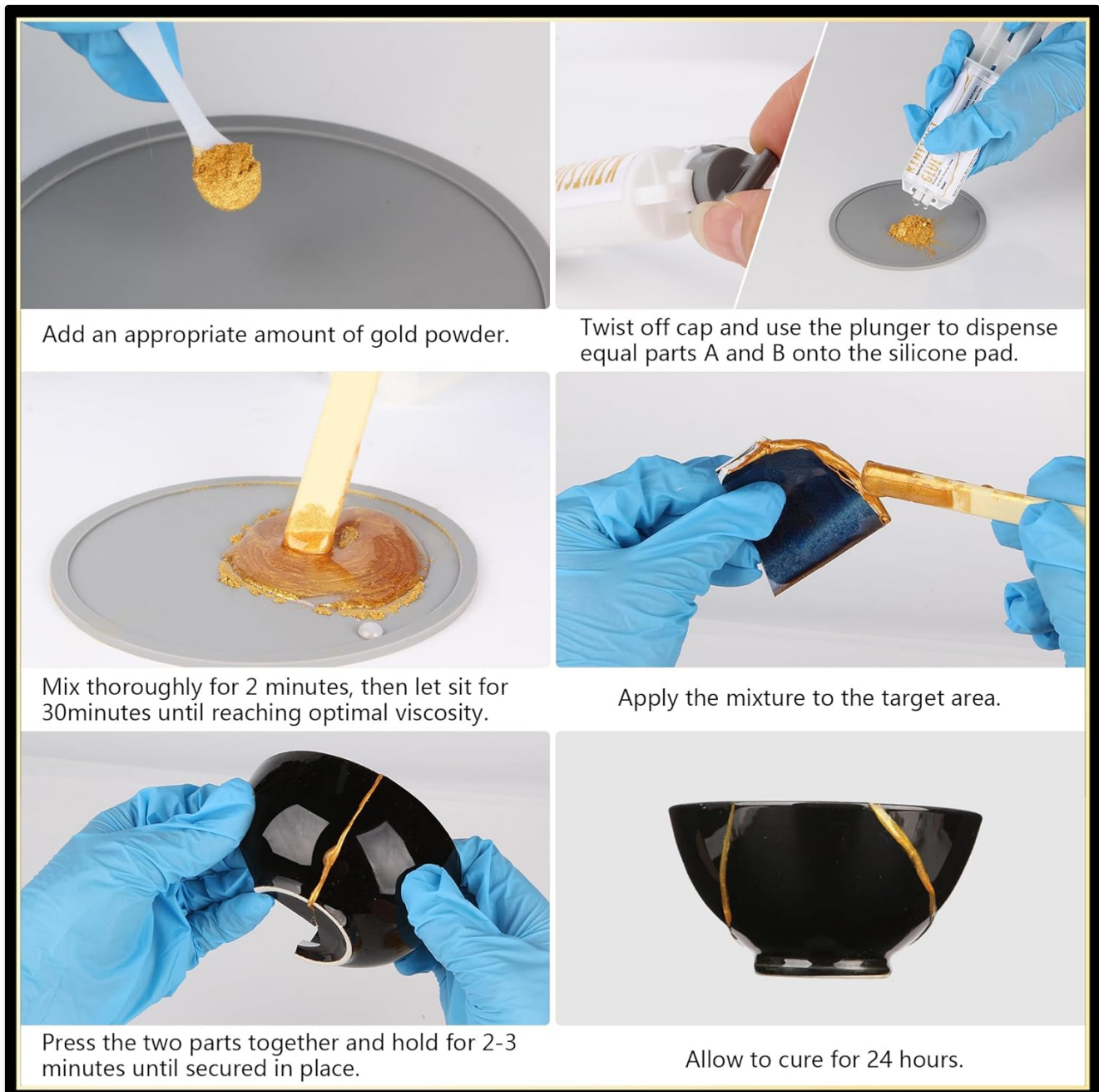


Image 5.1: Step-by-step visual guide for the Kintsugi repair process.

1. **Dispense Pigment:** Using a spoon, add an appropriate amount of your chosen metallic pigment powder onto one of the silicone mixing coasters. A common ratio is approximately 0.3g of powder per 1 ml of glue.
2. **Dispense Glue:** Twist off the cap of the epoxy glue. Insert the push rods into the back of the glue tubes. Press the plungers to dispense equal parts of component A and component B onto the silicone pad, next to the pigment.
3. **Mix Thoroughly:** Use a wooden stick or silicone mixing stick to mix the epoxy glue components together first, then thoroughly incorporate the metallic pigment powder. Mix for approximately 2 minutes until a uniform color and consistency are achieved. Let the mixture sit for 30 minutes to reach optimal viscosity for application.
4. **Apply Mixture:** Apply the mixed adhesive to the broken edges of one of the pieces using a silicone brush or mixing stick. Ensure an even, thin layer.
5. **Join Pieces:** Carefully press the broken pieces together, aligning them precisely. Hold the pieces firmly in place for 2-3 minutes until the adhesive begins to set and the pieces are secured.
6. **Cure:** Allow the repaired item to cure for a full 24 hours. During this time, avoid moving or disturbing the item.

For filling missing pieces: If there are small missing fragments, mix the white clay powder with a small amount of

the prepared colored epoxy mixture to create a paste. Use this paste to fill the gaps, then smooth the surface. Once cured, you can apply a final layer of colored epoxy over the filled area if desired.

6. CURING AND FINISHING

- **Initial Drying Time:** The adhesive has a working time of approximately 30 minutes after mixing.
- **Full Cure Time:** Allow the repaired item to cure for 24 hours to achieve maximum strength and durability.
- **Removing Excess:** After the 24-hour curing period, any excess cured adhesive can be carefully scraped away using the provided scraper or a craft knife.

7. CARE AND MAINTENANCE

- **Cleaned Items:** Repaired items are safe for use with food and are dishwasher-friendly after the full 24-hour curing period.
- **Tool Cleaning:** The silicone mixing tools and brushes are reusable. Clean them immediately after use by peeling off any tacky epoxy once it has partially set, or by wiping with a suitable solvent if necessary before it cures completely.
- **Kit Storage:** Store unused epoxy glue with the resealable locking cap securely in place to prevent drying. Keep all components in a cool, dry place away from direct sunlight.

8. TROUBLESHOOTING TIPS

- **Glue Dispensing Difficulty:** If the epoxy glue is difficult to dispense, ensure the push rods are correctly inserted and apply steady, even pressure.
- **Inconsistent Gold Finish:** The appearance of the metallic finish can vary based on mixing technique and application. An inconsistent finish is often considered part of the Kintsugi aesthetic, highlighting the repair.
- **Messy Pigment:** Metallic powders can become airborne easily. Handle them gently and avoid sudden movements or drafts in your workspace.
- **Measurement Precision:** Achieving exact measurements for glue and powder can be challenging without marked dispensers. For best results, aim for the recommended ratio and practice on non-precious items first to develop a feel for the consistency.
- **Faint Odor:** A faint odor may be present while working with the epoxy. Ensure adequate ventilation.

9. PRODUCT SPECIFICATIONS

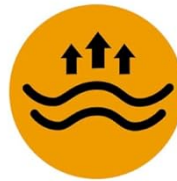
- **Glue Volume:** 50ml (AB Epoxy)
- **Pigment Weight:** 5g per color (Gold, Antique Gold, Brown Gold, Silver)
- **Clay Powder Weight:** 10g
- **Package Dimensions:** 6.89 x 5.47 x 2.05 inches
- **Item Weight:** 12.3 ounces
- **Manufacturer:** iienjoy
- **First Available:** March 14, 2025

Glue Properties:

KINTSUGI REPAIR KIT



Food Safe



Mega Adhesion



Fast drying (30 min)



Water Proof



No Pungent Odor



Heat/Cold Resistance

Image 9.1: Visual representation of the key properties of the Kintsugi glue.

- Food Safe
- Mega Adhesion
- Fast Drying (30 minutes working time)
- Waterproof
- No Pungent Odor
- Heat/Cold Resistance

10. SUPPORT

For any questions, assistance, or further information regarding your iienjoy Kintsugi Repair Kit, please contact iienjoy customer support. Contact details can typically be found on the product packaging or through the retailer where the kit was purchased.

