



[Manuals.plus](#) /

> [MIZUDO](#) /

> MIZUDO 180k Propane Tankless Water Heater User Manual

## MIZUDO HW180A0W-LP

# MIZUDO 180k Propane Tankless Water Heater User Manual

Model: HW180A0W-LP

[Instructions](#)   [Safety Information](#)   [Maintenance](#)   [Product Overview](#)   [Troubleshooting](#)   [Setup](#)   [Operating](#)   [Specifications](#)   [Warranty & Support](#)

## 1. SAFETY INFORMATION

Read all instructions carefully before installation and operation. Failure to follow these instructions could result in property damage, personal injury, or death. This appliance must be installed by a qualified professional in accordance with all local codes and regulations.

### Important Safety Features:

- **Advanced Sealed Combustion System:** Draws external air for combustion, preventing indoor air quality issues and ensuring no risk of CO leakage.
- **CSA Certified:** Ensures the unit meets established safety standards.
- **Freeze Prevention:** Automatic protection against freezing temperatures.
- **Dry-Fire Safeguard:** Prevents operation without water flow.
- **Auto-Relight:** Automatically reignites the burner if flame is lost.
- **Flue Obstruction Detection:** Shuts down the unit if the flue is blocked.
- **Emergency Shutoff:** Provides a mechanism for immediate shutdown in emergencies.

**WARNING:** Improper installation, adjustment, alteration, service, or maintenance can cause property damage, personal injury, or death. Consult a qualified installer, service agency, or the gas supplier for assistance.

**CAUTION:** Ensure proper ventilation and exhaust for the unit. Do not block air inlets or outlets.



## CSA Certificated

6 security protection, Use with confidence



IPX4  
Waterproof



Dry-burning  
Prevention



Overheat  
Protection



Anti-freeze  
Protection



Time-out  
Shutdown



Accidental  
Flameout Protection

*Image: MIZUDO Tankless Water Heater displaying CSA certification and various safety features like IPX4 Waterproof, Dry-burning Prevention, Overheat Protection, Anti-freeze Protection, Time-out Shutdown, and Accidental Flameout Protection.*

## 2. PRODUCT OVERVIEW

---

The MIZUDO 180k Propane Tankless Water Heater (Model HW180A0W-LP) provides on-demand hot water for residential use. Its compact design and advanced features ensure efficient and reliable performance.

### Key Features:

- **High Capacity:** Delivers up to 7.9 GPM (Gallons Per Minute) of continuous hot water, suitable for 3 to 5 usage points simultaneously.
- **High Efficiency:** 180,000 BTU heat output with an oxygen-free copper heat exchanger for superior thermal conductivity and reduced heat loss.
- **Smart Control:** Wi-Fi and smartphone app control for remote monitoring and temperature adjustment.
- **Precise Temperature Control:** Maintains consistent hot water temperature with minimal fluctuation ( $\pm 1^{\circ}\text{F}$ ).
- **Space-Saving Design:** Compact dimensions (25" x 16.3" x 7.3") require significantly less space than traditional tank heaters.
- **Indoor Installation:** Designed for indoor use with a sealed combustion system.

### Product Components:

The MIZUDO tankless water heater consists of several key components working together to provide efficient hot water.



*Image: Internal view of the MIZUDO Tankless Water Heater, illustrating the 180,000 BTU instant heating process with simultaneous automatic regulation of water and gas, highlighting low start-up flow rate, fast heating, and temperature stabilization.*

- **Oxygen-Free Copper Heat Exchanger:** Maximizes heat transfer efficiency.
- **Segmented Burner:** Allows for precise flame intensity adjustment.
- **High-Speed DC Blower:** Ensures proper air intake and exhaust.
- **Dual-Wall Direct Vent Pipe:** Facilitates safe exhaust of combustion fumes and supply of outdoor oxygen.
- **Control Panel:** Digital display for temperature and status, with touch controls.

# 180,000 BTU Instant Heating

Simultaneous automatic  
regulation of water and gas



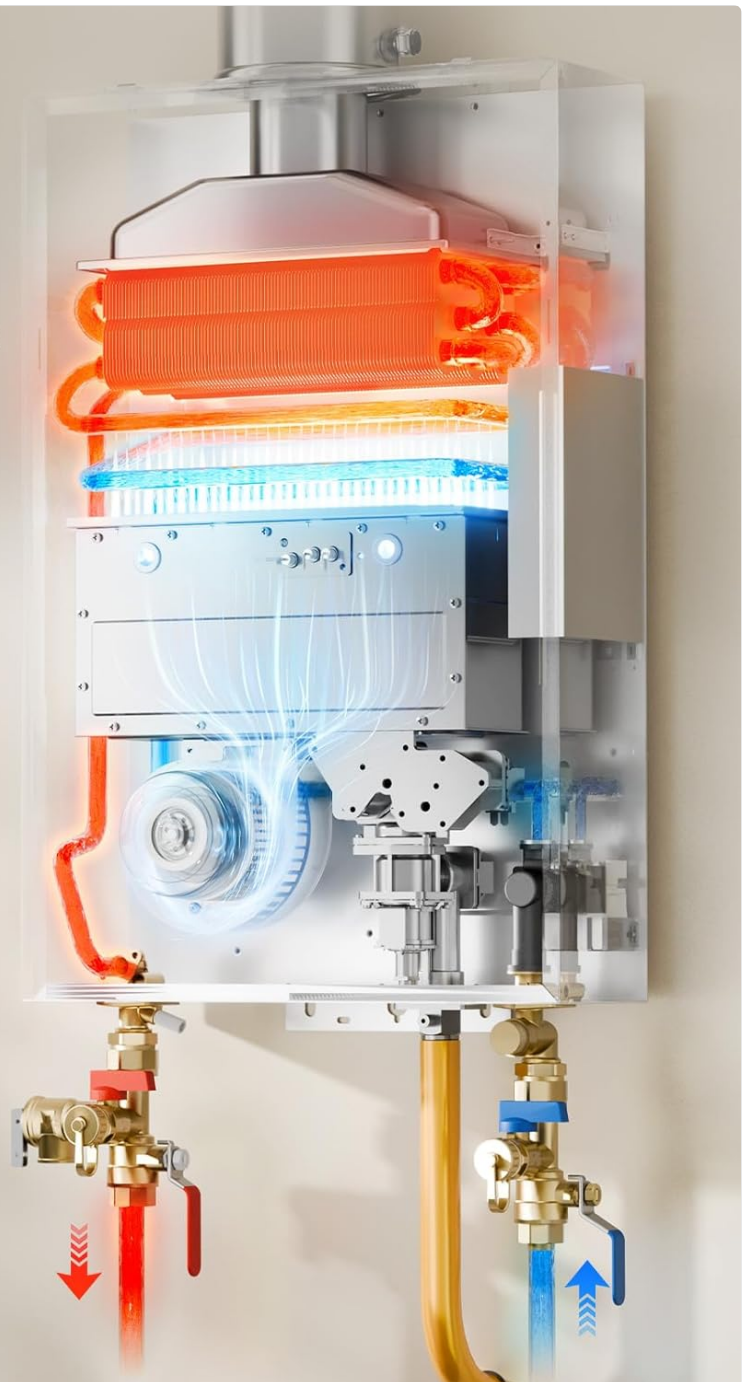
Low start-up  
flow rate



Fast  
heating



Stabilize  
temperature



*Image: Detailed internal view of the MIZUDO Tankless Water Heater, pointing out key components such as the Dual-wall Direct Vent Pipe, Oxygen-Free Copper Heat Exchanger, Segmented Burner, and High-Speed DC Blower.*

## 3. SETUP AND INSTALLATION

Installation of the MIZUDO tankless water heater requires adherence to all local and national plumbing and gas codes. It is strongly recommended that installation be performed by a licensed professional.

### Pre-Installation Checklist:

- Verify that the unit is suitable for your home's propane supply and water pressure.
- Ensure adequate space for installation, including clearances for ventilation and maintenance.
- Gather all necessary tools and additional components not included with the unit (e.g., valve kit, vent kit).
- Confirm electrical requirements: standard 120V power supply.
- Water connections: 3/4" NPT.

## Installation Steps (Summary - Refer to full manual for details):

1. **Mounting:** Securely mount the unit to a wall using the provided assembly kit and perforated paper for accurate placement.
2. **Ventilation:** Install the dual-wall direct vent pipe system. This system draws fresh air from outside and exhausts combustion gases, maintaining indoor air quality.
3. **Water Connections:** Connect the cold water inlet and hot water outlet using 3/4" NPT connections. Install a valve kit for isolation and maintenance.
4. **Gas Connection:** Connect the propane gas supply to the unit. Ensure all gas connections are leak-free.
5. **Electrical Connection:** Plug the unit into a standard 120V electrical outlet.
6. **Leak Check:** Perform thorough checks for water and gas leaks.
7. **Initial Startup:** Follow the initial startup procedure outlined in the comprehensive manual.

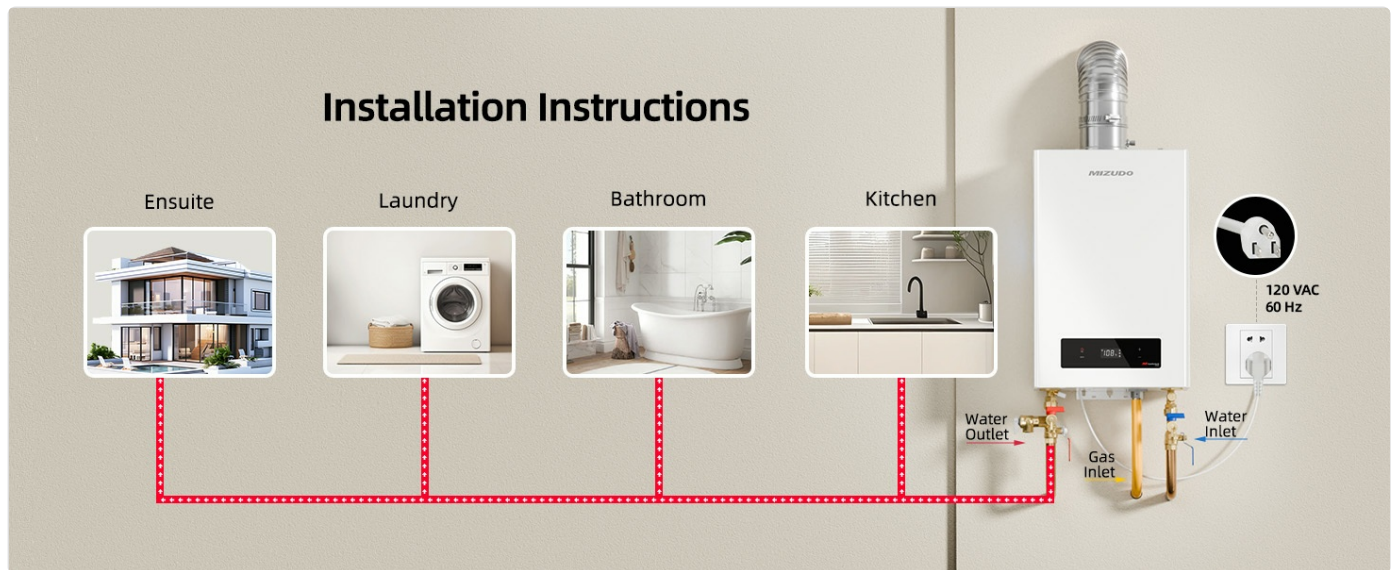
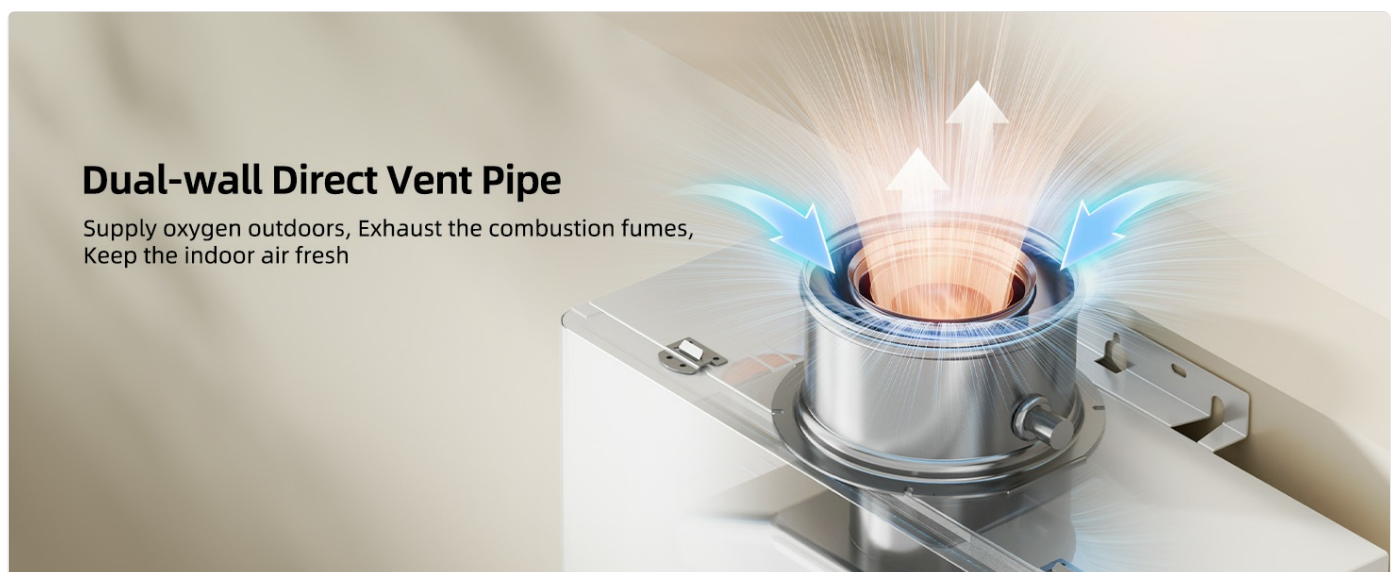


Image: Diagram illustrating typical installation points for the MIZUDO Tankless Water Heater in different household locations such as ensuite, laundry, bathroom, and kitchen, showing water inlet, gas inlet, water outlet, and electrical connection.



### Dual-wall Direct Vent Pipe

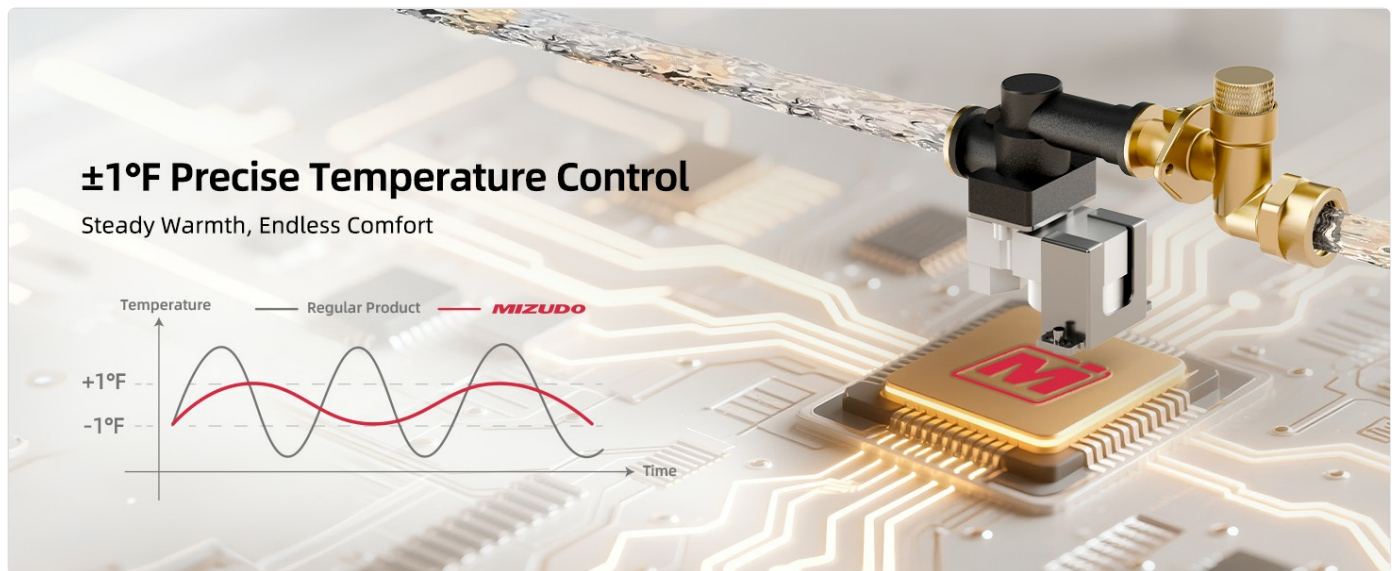
Supply oxygen outdoors, Exhaust the combustion fumes,  
Keep the indoor air fresh

Image: Close-up view of the dual-wall direct vent pipe system, showing how it supplies oxygen from outdoors and exhausts combustion fumes to keep indoor air fresh.

## 4. OPERATING INSTRUCTIONS

### Basic Operation:

1. **Power On:** Ensure the unit is plugged in and the gas supply is open. The display will illuminate.
2. **Set Temperature:** Use the '+' and '-' buttons on the unit's control panel to adjust the desired hot water temperature. The maximum temperature is 149°F.
3. **Hot Water Activation:** Open any hot water faucet in your home. The unit will detect water flow (minimum activation flow 0.53 GPM) and begin heating instantly.
4. **Monitoring:** The display will show the current outlet water temperature.



*Image: MIZUDO Tankless Water Heater control panel with digital display and temperature adjustment buttons, illustrating precise temperature control.*

### Wi-Fi and App Control:

The MIZUDO tankless water heater can be controlled remotely via a smartphone application. This feature allows for convenient monitoring and adjustment from anywhere.

1. **Download App:** Download the MIZUDO app from your smartphone's app store (available on iOS and Android).
2. **Pair Device:** Follow the in-app instructions to connect your water heater to your home Wi-Fi network and pair it with your smartphone.
3. **Remote Functions:**
  - Switch the device on/off.
  - Adjust the water temperature.
  - Set ECO mode for energy saving.
  - View consumption reports.
  - Check troubleshooting information.



Image: Smartphone displaying the MIZUDO app interface for remote operation, showing options to switch devices on/off, adjust temperature, set ECO mode, and view consumption reports, with the water heater visible in the background.

## Official Product Video:

Your browser does not support the video tag.

Video: Official MIZUDO Indoor Tankless Water Heater 180K BTU product video, demonstrating features like Wi-Fi control, instant heating, temperature stability, sealed combustion, and multi-location suitability. (Duration: 0:46)

## 5. MAINTENANCE

---

Regular maintenance ensures optimal performance and extends the lifespan of your MIZUDO tankless water heater. Always turn off the power and close the gas and water supply valves before performing any maintenance.

### Annual Maintenance (Recommended by a Qualified Technician):

- **Flushing:** Flush the heat exchanger to remove mineral buildup (scale). This is crucial in areas with hard water.
- **Vent System Inspection:** Check the vent pipes for any obstructions, leaks, or damage.
- **Gas Line Inspection:** Verify gas connections are secure and free of leaks.
- **Ignition System Check:** Inspect the igniter and flame sensor for proper operation and cleanliness.
- **Water Filter Cleaning:** If applicable, clean or replace any inline water filters.

### User Maintenance:

- **Exterior Cleaning:** Wipe down the exterior of the unit with a soft, damp cloth. Do not use abrasive cleaners.
- **Freeze Protection:** In freezing weather, ensure the unit and its water lines are protected to prevent damage. The unit has automatic freeze prevention, but additional measures may be necessary in extreme cold or during power outages.

## High-quality Waterway Material

Clean and hygienic,  
Taking care of your baby's health



*Image: Illustration emphasizing the clean and hygienic waterway materials used in the MIZUDO water heater, contributing to water quality.*

## 6. TROUBLESHOOTING

This section provides solutions to common issues. For complex problems or if you are unsure, contact a qualified technician or MIZUDO customer support.

Problem	Possible Cause	Solution
No hot water / Unit not activating	No power supply Gas supply off or low pressure Insufficient water flow (below 0.53 GPM) Inlet water filter clogged	Check power connection and circuit breaker. Ensure gas valve is open and propane tank has fuel. Increase water flow at the faucet. Clean the inlet water filter.
Water not hot enough	Temperature setting too low Excessive hot water demand Mineral buildup in heat exchanger Inlet water temperature too low for current flow rate	Increase temperature setting on control panel or app. Reduce simultaneous hot water usage. Schedule professional flushing of the heat exchanger. Refer to the GPM chart in specifications for optimal flow rates at different inlet temperatures.
Unit displays an error code	Specific internal fault	Refer to the full user manual for a list of error codes and their corresponding solutions. Contact customer support if the issue persists.
Water temperature fluctuates	Inconsistent water flow Sensor malfunction	Ensure stable water pressure. Contact a qualified technician for inspection.

## 7. SPECIFICATIONS

Feature	Detail
Brand	MIZUDO
Model Number	HW180A0W-LP
Power Source	Liquid Propane
Heat Output	180,000 BTU/hr
Flow Rate	Max 7.9 GPM
Minimum Activation Flow	0.53 GPM (2 L/min)
Temperature Range	95°F - 149°F
Electrical Requirements	120 Volts, 43 Watts
Product Dimensions (W x H x D)	16.3" x 25" x 7.3"
Item Weight	39.6 Pounds
Water Connections	3/4" NPT
Certification	CSA Certified
Special Features	Advanced Sealed Combustion System, Automatic Anti-Freeze Protection, Smart WiFi and App Control

### Parameters and Accessories List

Maximum Gas Consumption	180,000 BTU/h
Temperature Range	95°F-149°F
Uniform Energy Factor	0.81
Activation Flow Rate	0.53 GPM
Power	120 VAC plug-in

**Specifications**

**Accessories Already included**

**Accessories to be Purchased**

Image: Diagram detailing the MIZUDO Tankless Water Heater's dimensions, maximum gas consumption, temperature range, uniform energy factor, activation flow rate, power, and a list of included and to-be-purchased accessories (valve kit, vent kit).

### GPM Flow Rate Chart (Outlet Water Temperature 110°F):

Inlet Temp (°F)	GPM	Approx. Usage (Showers)
37°F	4.1	2
42°F	4.4	2
47°F	4.7	2
52°F	5.2	2
57°F	5.6	2
62°F	6.2	3
67°F	7.0	3
72°F	7.9	4
77°F	9.1	4

*Note: Simultaneous shower use is based on a tankless set temperature of 110°F and a shower head flow rate of 2 GPM. Minimum flow may vary slightly depending on the temperature setting and the inlet water temperature.*

## 8. WARRANTY AND SUPPORT

MIZUDO stands behind the quality of its products. This water heater comes with a comprehensive warranty to ensure your peace of mind.

- **Heat Exchanger Warranty:** 5 years
- **Comprehensive Unit Warranty:** 2 years

For warranty claims, technical assistance, or to locate a qualified service technician, please contact MIZUDO customer support. Keep your purchase receipt and model number handy when contacting support.

**Manufacturer:** Mizudo

**Contact Information:** Refer to the contact details provided in your product packaging or on the official MIZUDO website.

