

Epson ET-2980

Epson EcoTank ET-2980 Wireless All-in-One Color Supertank Printer Instruction Manual

Model: ET-2980

1. INTRODUCTION

This manual provides essential instructions for the safe and efficient use of your Epson EcoTank ET-2980 Wireless All-in-One Color Supertank Printer. Please read this manual thoroughly before operating the printer and keep it for future reference.



Image 1.1: The Epson EcoTank ET-2980 printer shown with its included ink bottles.

2. SAFETY INFORMATION

Observe the following safety precautions to prevent damage to the printer or injury to yourself:

- Always place the printer on a stable, flat surface.

- Do not block ventilation openings.
- Use only the power cord supplied with the printer.
- Keep ink bottles out of reach of children and do not ingest ink.
- Unplug the printer from the power outlet before cleaning or performing maintenance.
- Avoid touching the internal components of the printer, especially the print head, unless instructed to do so for maintenance.

3. WHAT'S IN THE BOX

Verify that all components are present in the packaging:

- Epson EcoTank ET-2980 All-in-One Printer
- Instruction Manual
- Power Cord
- 1 bottle of 502 Black Ink (127 mL)
- 1 bottle each of 502 Cyan, Magenta, Yellow Ink (70 mL each)

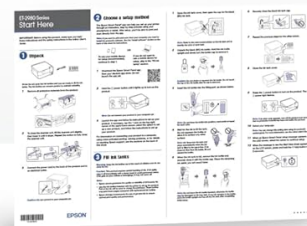
What's in the Box

EcoTank® ET-2980
All-in-One Supertank Printer



Power Cord (USB not included)

Start Here Guide



EcoTank 502® Ink Bottles

* We recommend genuine Epson® ink for the best print quality and performance.

Image 3.1: Contents of the EcoTank ET-2980 packaging.

4. SETUP

4.1 Unpacking

1. Remove the printer from its box and remove all protective materials, tapes, and plastic films.
2. Open the scanner unit and remove any internal packing materials. Close the scanner unit.

4.2 Filling the Ink Tanks

The EcoTank ET-2980 features supersized ink tanks designed for easy, mess-free refilling.

1. Open the ink tank unit cover on the side of the printer.
2. Open the cap for the black ink tank.
3. Uncap the black ink bottle (502 Black). The unique keyed EcoFit bottles prevent accidental filling of the wrong color.
4. Insert the ink bottle into the filling port. The ink will automatically start to fill the tank. Do not squeeze the bottle.
5. Once the tank is full, the ink flow will stop. Remove the bottle and recap it. Close the black ink tank cap.
6. Repeat this process for the Cyan, Magenta, and Yellow ink tanks using their respective color bottles.
7. Close the ink tank unit cover.

Stress-Free, Cartridge-Free Printing

Use Epson's exclusive **EcoFit® bottles** to easily refill the high-capacity ink tanks, with up to **3 years of ink included** in the box—and with every replacement ink set¹

ecotank®
100 MILLION SOLD
Worldwide 2011 – 10/2024



¹ Based on average monthly document print volumes of about 125 pages.

4.3 Power On and Initial Setup

1. Connect the power cord to the printer and then to a power outlet.
2. Press the power button to turn on the printer.
3. Follow the on-screen instructions on the 1.44-inch color display to select your language and perform the initial ink charging. This process may take approximately 11 minutes.

4.4 Software Installation and Wireless Connection

1. Visit the Epson support website for your model (epson.com/support/ET2980) to download the latest drivers and software.
2. Run the installer and follow the prompts to install the necessary software.
3. During installation, you will be guided through connecting your printer to your wireless network (Wi-Fi). Ensure your printer and computer are on the same network.
4. Alternatively, you can connect the printer to your computer using a USB cable (not included).

5. OPERATING THE PRINTER

5.1 Basic Printing

The ET-2980 offers fast print speeds of 15 ISO ppm for black and 8 ISO ppm for color.

1. Load paper into the 100-sheet paper tray.
2. Open the document you wish to print on your computer or mobile device.
3. Select 'Print' from the application's menu.
4. Choose your Epson ET-2980 printer.
5. Adjust print settings such as paper size, type, and print quality as needed.
6. Click 'Print'.

5.2 Scanning

The printer includes a built-in flatbed scanner.

1. Place the document or photo face-down on the scanner glass.
2. From your computer, open the Epson Scan software or use the Epson Smart Panel app on your mobile device.
3. Select scan settings such as document type, resolution, and destination.
4. Click 'Scan'.

5.3 Copying

Use the printer's control panel for direct copying.

1. Place the document face-down on the scanner glass.
2. On the printer's 1.44-inch color display, navigate to the 'Copy' function.
3. Adjust settings like number of copies, paper size, and color/black & white.
4. Press the 'Start' button to begin copying.

5.4 Mobile Printing

Print and scan directly from your smart device using the Epson Smart Panel app or Apple AirPrint.

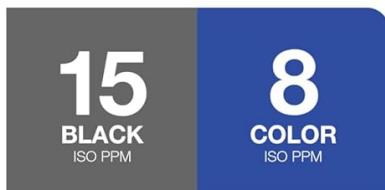
- **Epson Smart Panel App:** Download the app from your device's app store. Ensure your device is connected to the same Wi-Fi network as your printer. The app allows for printing, scanning, and managing printer settings.
- **Apple AirPrint:** For Apple iOS devices, select the print option from your application, choose your ET-2980 printer, and print directly without additional drivers.

EcoTank® ET-2980

Wireless | Print | Copy | Scan

HOME HOME OFFICE SMALL BUSINESS PHOTO/GRAPHICS

Print Speeds†



Mobile device
not included.



Wi-Fi® 5 & Mesh
Connectivity



Auto 2-Sided
Printing



100-Sheet
Paper
Capacity



High-Quality
Photo Printing



1.44" Color
Display



Smart
Mobile
Printing¹

† Black and color print speeds are measured in accordance with ISO/IEC 24734. Actual print times will vary based on factors including system configuration, software, and page complexity. For more information, visit epson.com/printspeed

¹ Most features require an Internet connection to the printer, as well as an Internet- and/or email-enabled device. For a list of Epson Connect™ enabled printers and compatible devices and apps, visit epson.com/connect

Image 5.1: Key features of the EcoTank ET-2980, including connectivity and printing capabilities.

5.5 Auto 2-Sided Printing (Duplex)

The ET-2980 supports automatic two-sided printing to save paper.

1. When printing from your computer, open the print dialog box.
2. Look for an option like 'Two-Sided Printing', 'Duplex Printing', or 'Print on both sides'.
3. Select the desired binding option (e.g., long-edge or short-edge binding).
4. Click 'Print'.

6. MAINTENANCE

6.1 Checking Ink Levels

Monitor ink levels regularly to ensure continuous printing. Ink levels can be checked visually through the transparent ink tanks on the front of the printer or via the printer's display and software.

6.2 Print Head Cleaning

If print quality declines (e.g., missing lines, faded colors), perform a print head cleaning.

1. From the printer's control panel, navigate to 'Maintenance' or 'Setup'.
2. Select 'Print Head Cleaning'.
3. Follow the on-screen instructions. This process uses a small amount of ink.

6.3 Nozzle Check

Perform a nozzle check to diagnose print quality issues before cleaning the print head.

1. From the printer's control panel, navigate to 'Maintenance' or 'Setup'.
2. Select 'Nozzle Check'.
3. The printer will print a pattern. Examine the pattern for gaps or missing segments.
4. If the pattern is incomplete, perform a print head cleaning.

6.4 Paper Handling

Always load paper correctly to prevent jams and ensure optimal print quality.

- Fan the paper stack before loading to separate sheets.
- Do not overload the paper tray.
- Use recommended paper types and sizes for best results.

Epson® Genuine Ink Promise

Epson is committed to delivering the highest-quality and most reliable inks for your printing experience. Epson's Promise is backed by our outstanding Service & Support and Warranty Programs.



Epson strongly recommends the use of Genuine Epson Inks for a quality printing experience. Non-Epson inks and inks not formulated for your specific printer may cause damage that is not covered by the Epson warranty.

SCROLL DOWN TO "FROM THE MANUFACTURER" TO LEARN MORE.

Image 6.1: Epson recommends using genuine Epson ink for optimal print quality and performance.

7. TROUBLESHOOTING

This section addresses common issues you might encounter with your ET-2980 printer.

7.1 Print Quality Issues

- **Faded or Streaky Prints:** Perform a nozzle check. If the pattern is incomplete, run a print head cleaning cycle. Repeat up to three times if necessary.
- **Incorrect Colors:** Ensure you are using genuine Epson ink. Check ink levels and perform a print head cleaning.
- **Paper Jams:** Remove any jammed paper carefully, following instructions on the printer's display or in the online guide. Ensure paper is loaded correctly and not creased.

7.2 Connectivity Problems

- **Printer Not Found on Network:** Verify that the printer is powered on and connected to the correct Wi-Fi network. Restart your router, printer, and computer. Re-run the wireless setup utility.

- **Cannot Print from Mobile Device:** Ensure the mobile device is on the same Wi-Fi network as the printer. Update the Epson Smart Panel app to the latest version.

7.3 Ink Spillage During Refill

If ink spills during refilling, it may indicate an issue with the ink bottle or tank. Ensure the bottle is correctly aligned and inserted. If spillage persists, contact Epson support.

8. SPECIFICATIONS

Key technical specifications for the Epson EcoTank ET-2980 printer:

Feature	Specification
Product Dimensions	13.7"D x 14.8"W x 7.4"H
Maximum Media Size	8.5 x 14 inch
Power Consumption	13 Watts (On-mode)
Scanner Type	Flatbed
Max Input Sheet Capacity	100 sheets
Maximum Color Print Resolution	4800 x 1200 Dots Per Inch
Maximum Black and White Print Resolution	4800 x 1200 Dots Per Inch
Dual-sided printing	Automatic
Connectivity Technology	USB, Wi-Fi
Max Print Speed (Monochrome)	15 ppm
Max Print Speed (Color)	8 ppm
Item Weight	11.5 pounds

9. WARRANTY AND SUPPORT

9.1 Limited Warranty

The Epson EcoTank ET-2980 comes with a limited warranty. This typically includes a 1-year warranty or 50,000 prints, whichever comes first. If registered within 1 year of purchase, the warranty may be extended to 2 years or 50,000 prints. Refer to the warranty documentation included with your product for full terms and conditions.

9.2 Customer Support

For technical assistance, troubleshooting, or warranty claims, please visit the official Epson support website or contact their customer service. Ensure you have your printer model number (ET-2980) and serial number ready when contacting support.

10. ENVIRONMENTAL CONSIDERATIONS

The Epson EcoTank ET-2980 is designed with environmental impact in mind, featuring a cartridge-free ink system.

- **Zero Cartridge Waste:** By using refillable ink tanks instead of traditional cartridges, the EcoTank system significantly reduces plastic waste that would otherwise end up in landfills.
- **Energy Efficiency:** The printer utilizes PrecisionCore Heat-Free technology, which consumes less power compared to conventional thermal inkjet printers.

Zero Cartridge Waste

Join the club with the millions of EcoTank® owners who've already helped to reduce millions of pounds¹ of plastic from going into landfills

¹ Based on product and replacement ink bottle sales in North America 2015 – June 2021.


² Individual cartridges estimate based on print yields of a replacement set of black and color ink bottles as compared to Epson® standard-capacity ink cartridges for similarly featured printers as of October 2024.

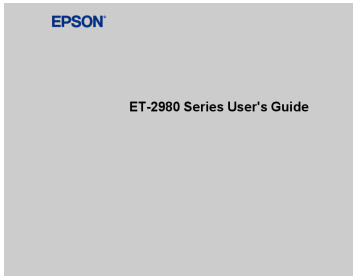


Each replacement ink bottle set is equivalent to about **80 individual cartridges²**



Image 10.1: The EcoTank system helps reduce plastic waste from cartridges.

 <p>EPSON EcoTank® ET-2803 All-in-One Cartridge-Free Supertank Printer Maximum Print Speed: 100%</p> <p>The ideal basic home printer: • Print – Up to 100% duty cycle, 100% print speed, 100% print quality. • Scan – Up to 100% duty cycle, 100% scan speed, 100% scan quality. • Copier – Up to 100% duty cycle, 100% copy speed, 100% copy quality. • Connectivity – Wi-Fi, USB, Ethernet, and mobile printing options. • Capacity – Up to 100% duty cycle, 100% capacity, 100% eco-friendly.</p>	<p>Epson EcoTank ET-2803 All-in-One Printer: Specifications & Features</p> <p>Detailed specification sheet for the Epson EcoTank ET-2803, a cartridge-free all-in-one supertank printer featuring wireless connectivity, high-capacity ink tanks, impressive print quality, and scanner/copier functions. Learn about its print speeds, paper handling, connectivity options, and eco-friendly features.</p>
 <p>SERVICE MANUAL</p> <p>For the following models: L350, L351, L300, L301, L355, L358, L210, L211, L110, and L111</p> <p>EPSON CORPORATION</p>	<p>Epson L350 Series Color Inkjet Printer Service Manual</p> <p>Comprehensive service manual for Epson L350, L351, L300, L301, L355, L358, L210, L211, L110, and L111 color inkjet printers. Covers troubleshooting, disassembly, reassembly, adjustments, and maintenance procedures.</p>
 <p>EPSON ET-2980 Series User's Guide</p>	<p>Epson ET-2980 Series User's Guide</p> <p>Comprehensive user guide for the Epson ET-2980 Series printer, covering setup, operation, printing, scanning, maintenance, and troubleshooting.</p>
 <p>EPSON ET-2750 Start Here: Quick Setup Guide</p>	<p>Epson ET-2750 Start Here: Quick Setup Guide</p> <p>A concise guide for setting up your Epson ET-2750 EcoTank printer, covering unpacking, ink tank filling, paper loading, and software installation.</p>
 <p>EPSON L4260 User's Guide</p>	<p>Epson L4260 User's Guide: Setup, Operation, and Troubleshooting</p> <p>Comprehensive user guide for the Epson L4260 printer, covering setup, Wi-Fi networking, printing, scanning, refilling ink, maintenance, and troubleshooting. Learn to operate your Epson L4260 efficiently.</p>
 <p>EPSON ET-2810 Series L3250 Series Benutzerhandbuch</p> <p>Checklist:</p> <ul style="list-style-type: none"> <input type="checkbox"/> Drucken <input type="checkbox"/> Kopieren <input type="checkbox"/> Scannen <input type="checkbox"/> Druckwartung <input type="checkbox"/> Lösung von Problemen 	<p>Epson ET-2810 Series und L3250 Series Benutzerhandbuch</p> <p>Umfassendes Benutzerhandbuch für die Epson ET-2810 Serie und L3250 Serie Drucker von Seiko Epson Corporation. Enthält detaillierte Anleitungen zu Drucken, Kopieren, Scannen, Papierhandhabung, Wartung, Fehlerbehebung und wichtigen Sicherheitshinweisen.</p>



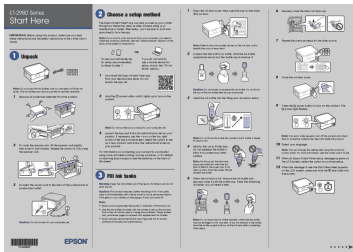
[\[pdf\] User Manual Guide](#)

User ManualEpson EcoTank ET 2980 Wireless All in One Color Supertank Printer White68230903 user manualnfm on demandware static Library Sites NFMSHaredLibrary default dwdc954517 product s 068 23 68230903 manual ManualUser WhiteEpson Wired Inkjet Multifunction White Caretek IT Solutions68230903 manual1084392378nfm manualcontent etilize Manual 1084392378 Black SolutionsEpson manual1084392377nfm 1084392377content ||| ||| ET-2980 Series User s Guide Contents ET-2980 Series User s Guide 11 Product Basics 12 Product Parts Locations . 12 Product Parts - Front . 13 Product Parts - Inside 14 Product Parts - Rear 16 Using the Control Panel . 16 Control Panel Butto ||| ET-2980 Series User s Guide Contents ET-2980 Series User s Guide 11 Product Basics 12 Product Parts Locations . 12 Product Parts - Front . 13 Product Parts - Inside 14 Product Parts - Rear 16 Using the Control Panel . 16 Control Panel Butto

ET-2980 Series User s Guide Contents ET-2980 Series User s Guide

..... 11 Product Basics

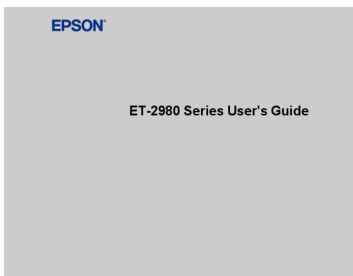
lang:en **score:34** filesize: 3.37 M page_count: 262 document date: 2025-03-13



[\[pdf\] Installation Guide Instructions](#)

Start Here ET 2980 Series CPD 65143 R0 Epson America Inc Installation InstructionsEpson EcoTank Wireless All in One Color Supertank Printer White68230903 installation instructionsnfm on demandware static Library Sites NFMSHaredLibrary default dw5b9a33fd product s 068 23 68230903 instructions ||| **ET-2980 Series Start Here IMPORTANT:** Before using this product, make sure you read these instructions and the safety instructions in the online User s Guide. 1 Unpack Note: Do not open the ink bottles until you are ready to fill the ink tanks. The ink bottles are vacuum packed to maintain reliabilit...

lang:en **score:31** filesize: 1.34 M page_count: 2 document date: 2025-02-19



[Epson ET-2980 Series User's Guide](#)

Comprehensive user guide for the Epson ET-2980 Series printer, covering setup, operation, printing, scanning, maintenance, and troubleshooting.

lang:en **score:30** filesize: 3.4 M page_count: 257 document date: 2025-07-17



[Epson EcoTank ET-2980 Wireless All-in-One Color Supertank Printer: Specification Sheet](#)

Detailed specifications for the Epson EcoTank ET-2980, a wireless all-in-one color supertank printer featuring high-quality printing, scanning, copying, and mobile connectivity. Learn about its ink efficiency, productivity features, and eco-friendly design.

lang:en **score:24** filesize: 1.39 M page_count: 2 document date: 2025-09-03



[pdf] Specifications

DOWNLOAD NOW ► EcoTank ET 2980 Wireless All in One Color Supertank Printer White Products

Epson US original assetDescr Spec Sheet BW CPD 65308R1 mediaserver goepson ImConvServlet
imconv 0ab0016b1abb5d194981c75bfff13fed3d94da02 |||

Supertank All-in-One Home EcoTank **ET-2980** Wireless All-in-One Color Supertank
Printer Wireless Print Copy Scan SPECIFICATION SHEET Also available in black

The perfect family printer. Incredible Value -- Epson EcoTank includes enough ink to last up to 3 years1. And if you run low, you ll sav...

lang:en score:23 filesize: 1.27 M page_count: 2 document date: 2025-05-09



[pdf] Specifications Borchure

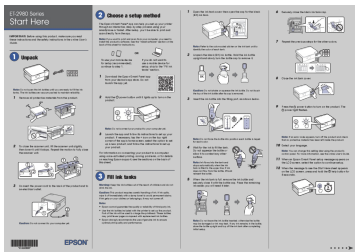
Manufacturer BrochureEpson ET 2980 Wired Wireless EcoTank Inkjet Multifunction Printer Color White

Caretek IT Solutions1084392378content etilize Brochure 1084392378 |||

Supertank All-in-One Home EcoTank **ET-2980** Wireless All-in-One Color Supertank
Printer Wireless Print Copy Scan SPECIFICATION SHEET Also available in black

The perfect family printer. Incredible Value -- Each replacement ink bottle set is equivalent to about 90 individual cartridges1 Up to 3...

lang:en score:22 filesize: 1.38 M page_count: 2 document date: 2024-11-18



[pdf] Installation Guide Instructions

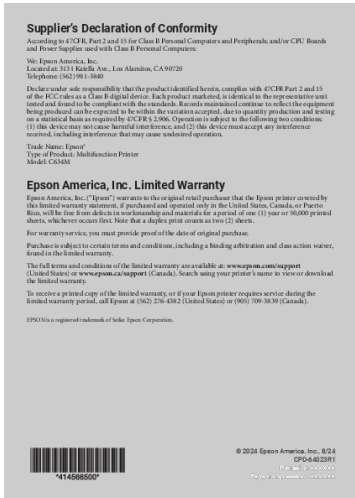
Start Here ET 2980 Series CPD 65143 R0 Epson America Inc 21 map 2025 r — Caution Do not connect
to your computer yet 2 Choose a setup method The Smart Panel® app can help you set up printer

through an cpd64021 files support epson docid cpd6 |||

ET-2980 Series Start Here IMPORTANT: Before using this product, make sure you
read these instructions and the safety instructions in the online User s Guide. 1

Unpack Note: Do not open the ink bottles until you are ready to fill the ink tanks. The
ink bottles are vacuum packed to maintain reliabilit...

lang:en score:21 filesize: 1.34 M page_count: 2 document date: 2025-02-19



[pdf] Decleration of Conformity Warranty

Declaration of Conformity ET 2980 CPD 64023 R1 Epson America Inc Support Canadacpd64023files

support epson docid cpd6 cpd64023 |||

Supplier s Declaration of Conformity According to 47CFR, Part 2 and 15 for Class B
Personal Computers and Peripherals; and/or CPU Boards and Power Supplies used

with Class B Personal Computers: We: Epson America, Inc. Located at: 3131 Katella
Ave., Los Alamitos, CA 90720 Telephone: 562 981-3840 De...

lang:en score:18 filesize: 78.99 K page_count: 2 document date: 2025-03-18



[pdf] Warranty

Epson America Inc Limited Warranty CPD 64742 R0 EcoTank ET 2980 Wireless All in One Color
Supertank Printer White68230903 warrantynfm on demandware static Library Sites NFMSHaredLibrary
default dwbefbf402 product s 068 23 68230903 warranty |||
Epson America, Inc. Limited Warranty Important Notice: This limited warranty contains important legal terms and conditions, including an arbitration provision. Please review carefully. A. What Is Covered: Epson America, Inc. Epson warrants to the original retail purchaser that the Epson printer ...
lang:en score:15 filesize: 128.42 K page_count: 8 document date: 2024-09-30



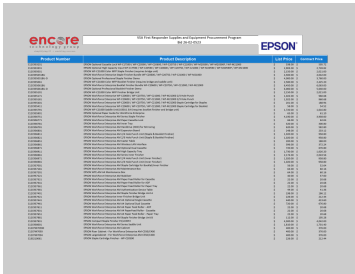
[pdf] Specifications

EcoTank® ET 2980frjmialoipeimages webfronts cache frjmialoipe |||
Supertank All-in-One Home EcoTank **ET-2980** Wireless All-in-One Color Supertank
Printer Wireless Print Copy Scan SPECIFICATION SHEET Also available in black
The perfect family printer. Incredible Value -- Each replacement ink bottle set is equivalent to about 90 individual cartridges1 Up to 3...
lang:en score:14 filesize: 1.34 M page_count: 2 document date: 2024-11-18



[pdf] Specifications

EcoTank® ET 2980frdqmfoszkmimages webfronts cache frdqmfoszkmv |||
Supertank All-in-One Home EcoTank **ET-2980** Wireless All-in-One Color Supertank
Printer Wireless Print Copy Scan SPECIFICATION SHEET Also available in black
The perfect family printer. Incredible Value - Epson EcoTank includes enough ink to last up to 3 years1. And if you run low, you ll ...
lang:en score:14 filesize: 1.24 M page_count: 2 document date: 2025-05-09



EPSON VSA First Responder Supplies and Equipment Procurement Program Price List

Official price list for EPSON supplies and accessories under the VSA First Responder Supplies and Equipment Procurement Program, featuring printer and projector components.
lang:en score:10 filesize: 866.04 K page_count: 66 document date: 2025-05-21