

J40

User Manual: Dual-Headset Wireless Earbuds

Model: J40 (White)

INTRODUCTION

Thank you for choosing the Generic Dual-Headset Wireless Earbuds. This manual provides comprehensive instructions to help you set up, operate, maintain, and troubleshoot your new earbuds, ensuring an optimal audio experience. Please read this manual carefully before use and retain it for future reference.

PRODUCT OVERVIEW

The J40 Dual-Headset Wireless Earbuds are designed for versatile use, offering high-quality audio and convenient features. Key features include:

- **Wireless Bluetooth Connectivity:** Enjoy freedom with advanced Bluetooth for seamless operation.
- **Touch Control:** Intuitive touch controls for managing audio and calls.
- **Deep Bass & Crystal-Clear Sound:** Immersive audio with powerful bass and a high-quality condenser microphone for clear calls.
- **Universal Compatibility:** Compatible with iPhone, Android, and all Bluetooth-enabled devices.
- **Long-Lasting Battery:** Rechargeable Lithium-Polymer battery with USB-C fast charging for extended playtime.
- **LED Display Charging Case:** The charging case features an LED display to show battery status.
- **Sound Isolation:** Designed to provide an immersive listening experience.
- **Not Waterproof:** Please note these earbuds are not waterproof.



Figure 1: The J40 Dual-Headset Wireless Earbuds with their charging case, showcasing the LED display on the case.



Figure 2: A couple wearing the J40 earbuds, highlighting their design for shared listening experiences.



Figure 3: The J40 earbuds and charging case, emphasizing the strong endurance of up to 40 hours of listening time.

SETUP

1. Charging the Earbuds and Case

Before first use, fully charge the earbuds and the charging case. Connect the provided USB-C cable to the charging port on the case and a power source. The LED display on the case will indicate the charging status. Ensure both earbuds are placed correctly in the case for them to charge.

2. Bluetooth Pairing

1. Ensure the earbuds are charged and removed from the charging case. They will automatically enter pairing mode.
2. On your device (smartphone, tablet, etc.), enable Bluetooth.
3. Search for "Dobles J40" or "J40" in the list of available Bluetooth devices.
4. Select the device name to connect. Once connected, you will hear a confirmation tone.

For detailed app-based setup and binding, refer to the AI User Manual steps shown below:

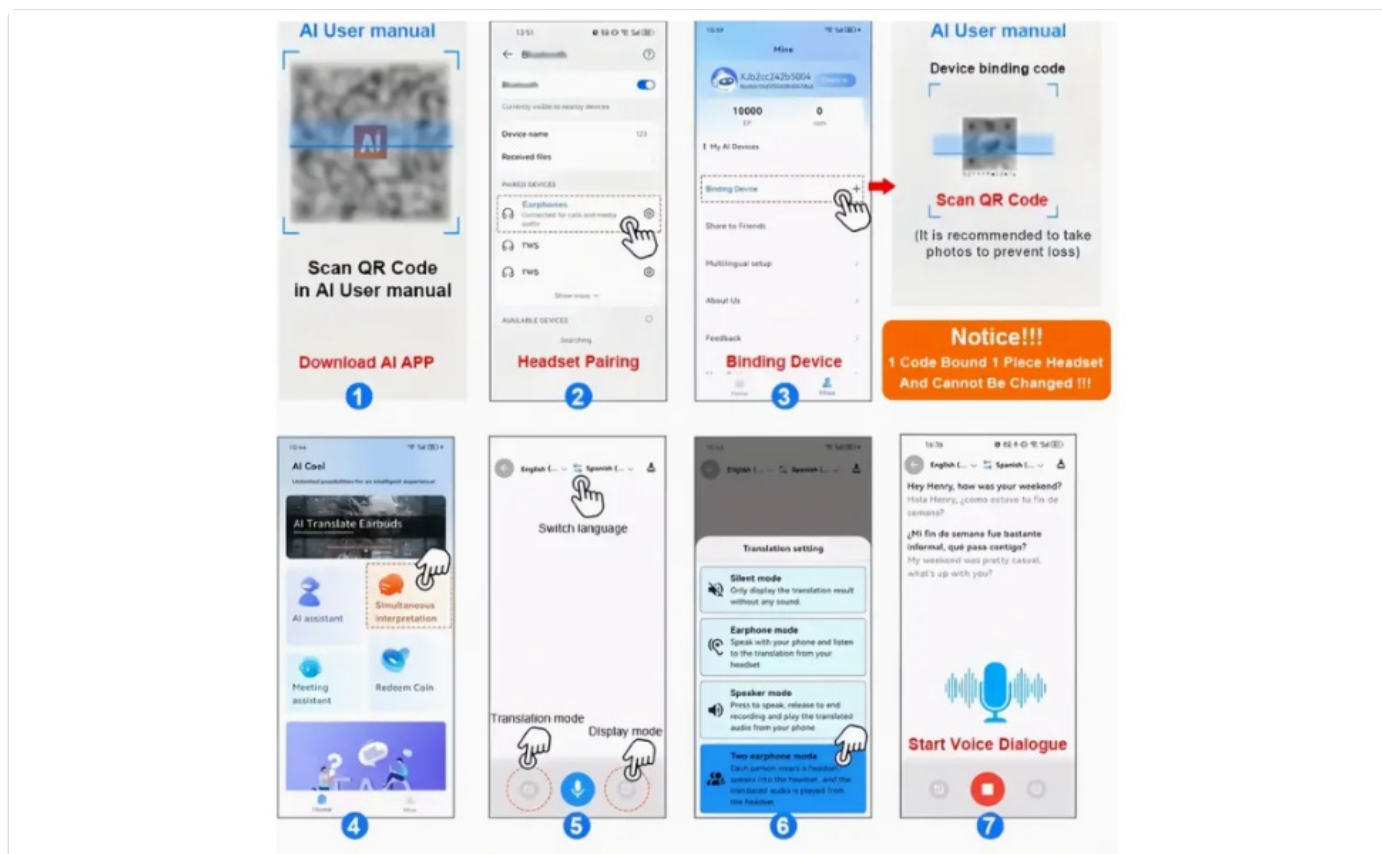


Figure 4: Step-by-step guide for using the AI app, including QR code scanning, headset pairing, and device binding. Note: One code binds one headset and cannot be changed.

OPERATING INSTRUCTIONS

Touch Controls

The J40 earbuds feature intuitive touch controls on each earbud. Specific functions may vary slightly based on your device and app settings, but common controls include:

- **Play/Pause:** Single tap on either earbud.
- **Next Track:** Double tap on the right earbud.
- **Previous Track:** Double tap on the left earbud.
- **Answer/End Call:** Single tap on either earbud.
- **Reject Call:** Long press on either earbud.
- **Activate Voice Assistant:** Triple tap on either earbud.

AI Dialogue Mode

The earbuds support an AI Dialogue Mode, enhancing communication and interaction. This feature is particularly useful for high-definition calls and real-time translation functionalities when used with the dedicated app.

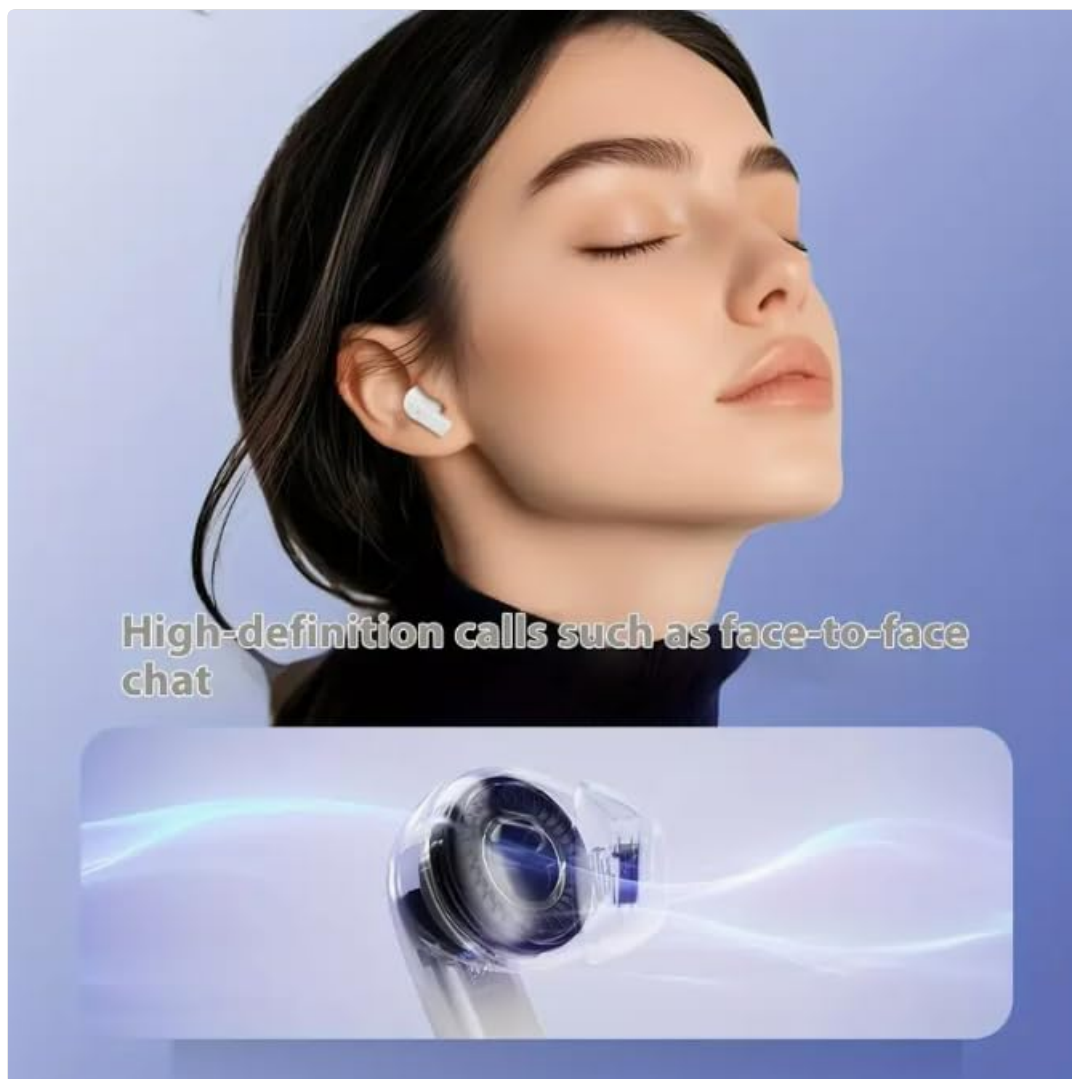


Figure 5: A user experiencing high-definition calls with the J40 earbuds, similar to face-to-face chat quality.



Figure 6: Individuals engaging in conversation, demonstrating the use of AI Dialogue Mode for enhanced communication.

The J40 earbuds are versatile for various scenarios:

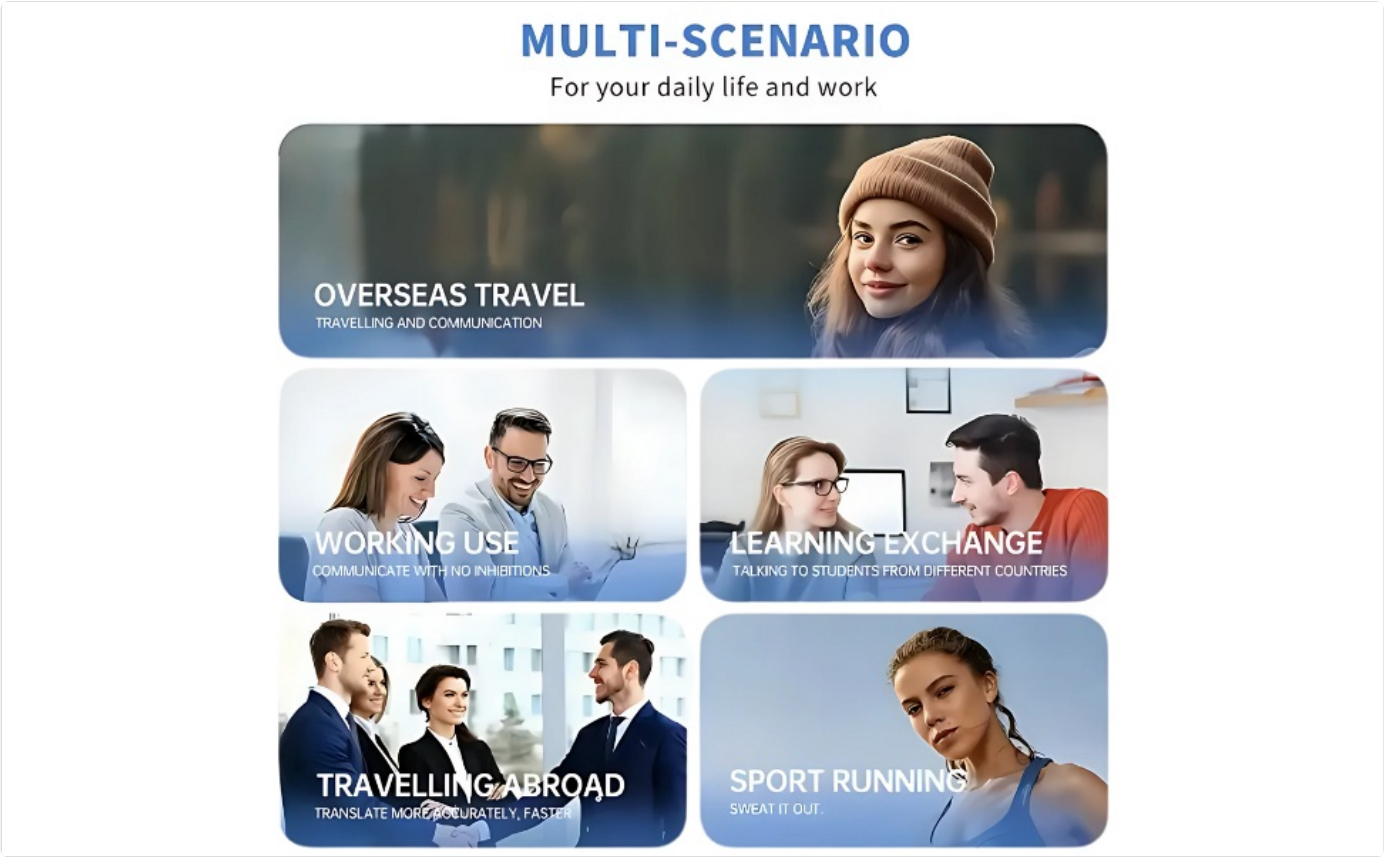


Figure 7: Depiction of the earbuds' utility in multiple scenarios, including overseas travel, work, learning, and sports.

MAINTENANCE

- **Cleaning:** Regularly clean the earbuds and charging case with a soft, dry, lint-free cloth. Do not use abrasive cleaners or immerse them in water.
- **Battery Care:** To prolong battery life, avoid fully discharging the earbuds and case frequently. Store them with some charge if not used for extended periods.
- **Storage:** Store the earbuds in their charging case when not in use to protect them from dust and damage. Keep them in a cool, dry place away from extreme temperatures.
- **Water Resistance:** These earbuds are NOT waterproof. Avoid exposure to water, sweat, or high humidity.

TROUBLESHOOTING

Problem	Possible Cause	Solution
Earbuds not pairing	Low battery; out of range; not in pairing mode; previously paired to another device.	Charge earbuds; ensure device Bluetooth is on and within range; put earbuds back in case and remove to re-enter pairing mode; disconnect from other devices.
No sound or low volume	Volume too low on device; earbuds not properly seated; connection issue.	Increase device volume; ensure earbuds are securely in ears; re-pair earbuds.
Charging case not charging	Cable issue; power source issue; dirty charging port.	Try a different USB-C cable; try a different power adapter/port; clean charging port gently.

Problem	Possible Cause	Solution
Intermittent connection	Interference; distance from device; obstacles.	Move closer to your device; avoid strong electromagnetic interference; ensure no large obstacles between earbuds and device.

SPECIFICATIONS

Model Name	Dobles J40
Item Model Number	J40
Connectivity Technology	Wireless (Bluetooth)
Ear Placement	In Ear
Form Factor	In Ear
Control Type	App Control / Touch Control
Noise Control	Active Noise Cancellation
Material	Plastic
Color	White
Water Resistance Level	Not Water Resistant
Included Components	Cable (USB-C)
Manufacturer	NEW SENYANG
ASIN	B0F1DXCK86

High rebound ring diaphragm
The loud field is more shocking.



Figure 8: Internal components of the earbud, illustrating the high rebound ring diaphragm for enhanced sound.



Figure 9: Visual representation of audio dynamic compensation, designed to restore 99% of the on-site listening sense.


WARRANTY & SUPPORT


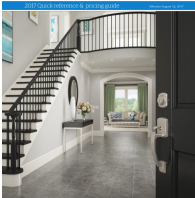



For warranty information and technical support, please refer to the product packaging or contact the manufacturer directly. Keep your purchase receipt as proof of purchase.



© 2025 Generic. All rights reserved.

Related Documents - J40

	<p>J40 TWS Bluetooth Headphones User Manual</p> <p>User manual for the J40 TWS Bluetooth Headphones by OKAS, detailing specifications, usage instructions, and FCC compliance.</p>
---	--

 <p>7-Step Battery Charger With LCD Display ZYX-J40</p> <p>12V/6A/24V/3A Lithium, Lead-Acid, LiFePO4 Charger FOR CAR AND MOTORCYCLE BATTERIES</p> <p>USER MANUAL</p> <p>IMPORTANT SAFETY INSTRUCTIONS Please read this manual and follow the instructions carefully before using the charger.</p>	<p>ZYX-J40 7-Step Battery Charger User Manual: Lithium, Lead-Acid, LiFePO4</p> <p>Comprehensive user manual for the ZYX-J40 7-Step Battery Charger. Learn how to safely charge 12V/24V Lithium, Lead-Acid, and LiFePO4 batteries for cars and motorcycles. Features include LCD display, multiple protection modes, and technical specifications.</p>
	<p>Schlage 2017 Quick Reference & Pricing Guide: Locks, Handlesets, and Hardware</p> <p>Comprehensive 2017 quick reference and pricing guide for Schlage door hardware, including electronic locks (Sense, Connect, Touch, Keypad), handlesets (F Series, FE285, Decorative), deadbolts (B Series, Decorative), knobs and levers (F Series, J Series), and multi-family solutions (Schlage Control). Features product details, specifications, and pricing.</p>
	<p>Lithonia Lighting Contractor Select STACK Switch LED Troffer: Specifications & Performance Data</p> <p>Detailed specifications, performance data, dimensions, and features for the Lithonia Lighting Contractor Select STACK Switch LED Center Element Lay-In troffer. Ideal for commercial spaces, offering selectable lumen and color temperature options.</p>
	<p>Termene și Condiții Asamblare și Instalare Bucătărie IKEA KNOXHULT</p> <p>Document detaliază termenii și condițiile, precum și serviciile incluse și excluse pentru asamblarea și instalarea sistemului de bucătărie IKEA KNOXHULT.</p>
 <p>CABRI G2 Flight Manual</p> <p>DISCLAIMER AND NOTICE: Helicopter model only.</p> <p>EASA Type certificate No. A-102 Issued by EASA on 14 November 2014 Other versions are approved under individual EASA certificates of approval (COA) No. 21/011 This flight manual contains the approved information for the aircraft No EASA COA is required for the aircraft This manual contains the approved information for the aircraft The information contained in this manual is the property of Guimbal Rotorcraft www.guimbal.com</p>	<p>CABRI G2 Flight Manual - Guimbal Rotorcraft Pilot Handbook</p> <p>Official Pilot Operating Handbook and EASA approved rotorcraft flight manual for the Guimbal CABRI G2 helicopter. Contains essential information for safe operation, procedures, and system descriptions.</p>