



Manuals.plus /

› GRUSIGN /

› GRUSIGN 72-inch Tall Storage Cabinet Instruction Manual (Model CWG-CF-WHT)

GRUSIGN CWG-CF-WHT

GRUSIGN 72-inch Tall Storage Cabinet Instruction Manual

Model: CWG-CF-WHT

1. INTRODUCTION

Thank you for choosing the GRUSIGN 72-inch Tall Storage Cabinet. This versatile farmhouse-style pantry cabinet is designed to provide ample storage with adjustable shelves, a large drawer, and convenient barn doors with built-in compartments. Crafted from high-density wood and reinforced with a sturdy steel frame, this cabinet offers a functional and stylish solution for organizing your kitchen, dining room, living room, or bedroom. Please read this manual thoroughly before assembly and use to ensure proper installation and safe operation.

2. SAFETY INFORMATION

- **Anti-Tip Hardware:** Always install the provided anti-tip hardware to secure the cabinet to the wall. This is crucial to prevent accidental tipping and potential injury, especially in households with children or pets.
- **Weight Limits:** Do not exceed the maximum weight capacity of 100 pounds for the entire cabinet. Distribute weight evenly across shelves and within the drawer. Individual shelf and drawer weight limits are detailed in the specifications section.
- **Assembly:** Assembly requires multiple steps and may take some time. It is recommended to have two adults for assembly to ensure safety and ease of installation.
- **Placement:** Place the cabinet on a flat, stable, and level surface. Avoid placing it in areas with high humidity or direct sunlight to prevent damage to the wood.
- **Children Safety:** Keep small parts and packaging materials away from children during assembly. Do not allow children to climb on or play with the cabinet.

3. PACKAGE CONTENTS

Before beginning assembly, please verify that all parts and hardware are present and undamaged. Refer to the detailed parts list included in your physical instruction manual for specific component identification. The package typically includes:

- Cabinet Panels (top, bottom, sides, back)
- Doors (4 barn doors)
- Shelves (adjustable and fixed)
- Drawer Components
- Hardware Pack (screws, dowels, hinges, drawer slides, handles, anti-tip kit)
- Instruction Manual

4. SETUP AND ASSEMBLY INSTRUCTIONS

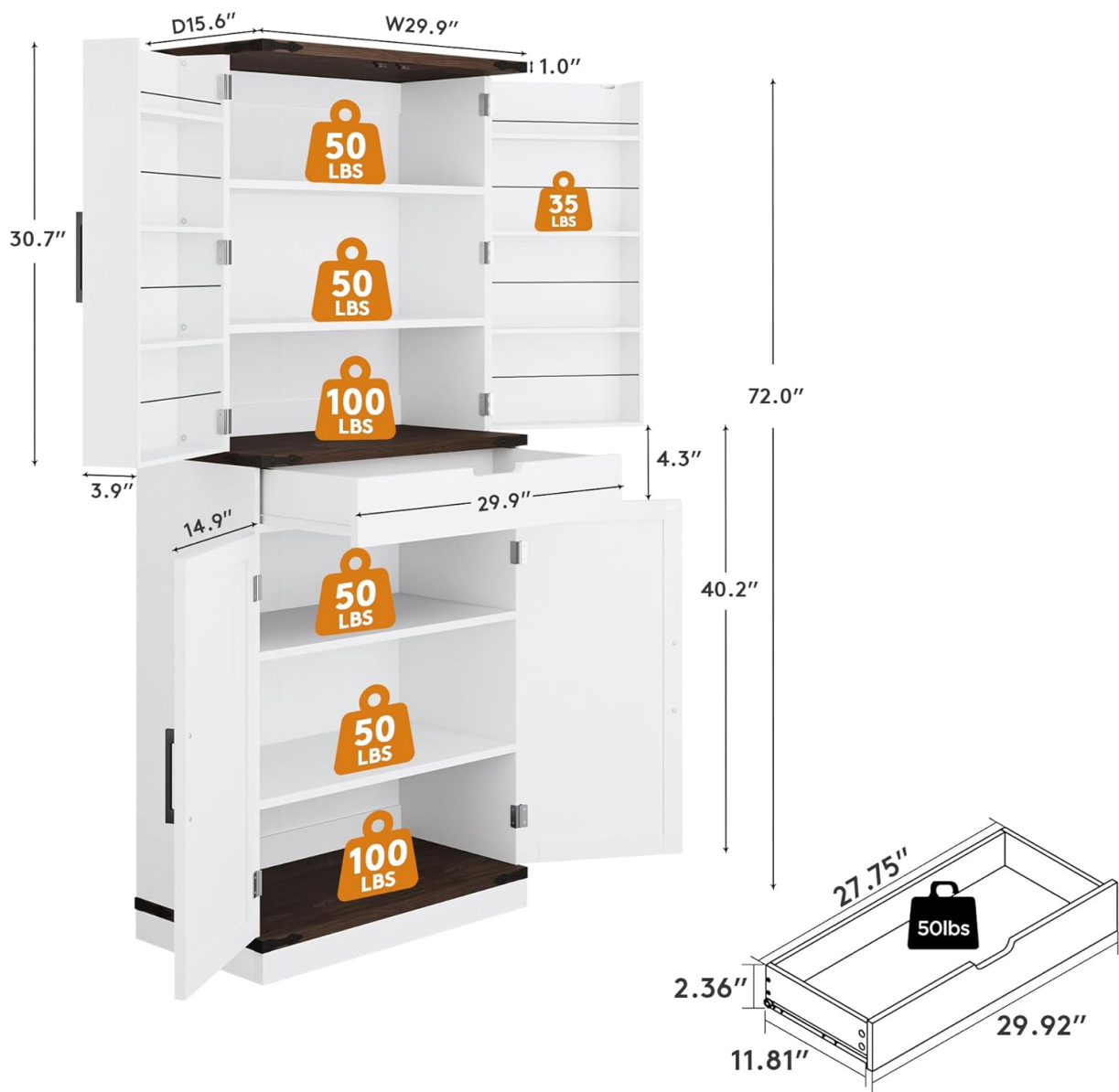
Assembly of the GRUSIGN Tall Storage Cabinet requires careful attention to detail. All necessary hardware and a detailed instruction manual are included in the package. Due to the size and number of components, assembly may take several hours. We recommend assembling the cabinet in the room where it will be used to avoid moving it after completion.

1. **Prepare Your Workspace:** Clear a spacious, clean, and well-lit area. Lay out all components and hardware, matching them against the parts list in your manual.
2. **Follow Step-by-Step Manual:** Adhere strictly to the numbered steps in the provided instruction manual. Do not skip steps or overtighten screws.
3. **Assemble Base Frame:** Begin by assembling the base frame, ensuring all connections are secure.
4. **Install Side Panels and Fixed Shelves:** Attach the side panels and any fixed shelves as indicated.
5. **Assemble Drawer:** Construct the drawer according to the instructions, ensuring smooth operation of the slides.
6. **Attach Doors:** Mount the barn doors using the provided hinges. Adjust as necessary for proper alignment.
7. **Install Adjustable Shelves:** Insert the adjustable shelf pins into the desired holes and place the shelves.
8. **Secure Anti-Tip Hardware:** This is a critical safety step. Attach the anti-tip hardware to the top rear of the cabinet and secure it firmly to a wall stud using appropriate fasteners.

For a visual overview of the product and its features, please refer to the video below:

Your browser does not support the video tag.

Official product video showcasing the GRUSIGN Farmhouse Kitchen Pantry Cabinet in various settings and highlighting its storage capabilities.



This diagram illustrates the overall dimensions and individual weight capacities for the shelves and drawer of the storage cabinet.

5. OPERATING INSTRUCTIONS

The GRUSIGN Tall Storage Cabinet is designed for versatile storage in various rooms. Utilize its features to maximize organization.

- Adjustable Shelves:** The cabinet features multiple adjustable shelves. To change a shelf's height, remove all items from the shelf, lift the shelf, remove the four metal pins supporting it, reposition the pins into the desired holes, and then place the shelf back on the pins. Ensure all four pins are securely in place before loading the shelf.
- Large Drawer:** The extra-large drawer operates on smooth-gliding slides, providing easy access for storing cutlery, utensils, or other frequently used items. Pull the handle gently to open and push to close.
- Barn Doors with Built-in Compartments:** The four barn doors open to reveal main storage areas and feature 8 built-in compartments on the inside of the doors. These compartments are ideal for smaller items like bottles, spices, or seasonings, maximizing storage efficiency. The doors are equipped with magnetic locks for secure closure.

8 Door Shelves



This image shows the cabinet's interior with doors open, illustrating the adjustable shelves and the convenient door-mounted storage compartments.

Large Storage Space

Magnetic Lock

Convenient to open and close the door

8 Door Shelving

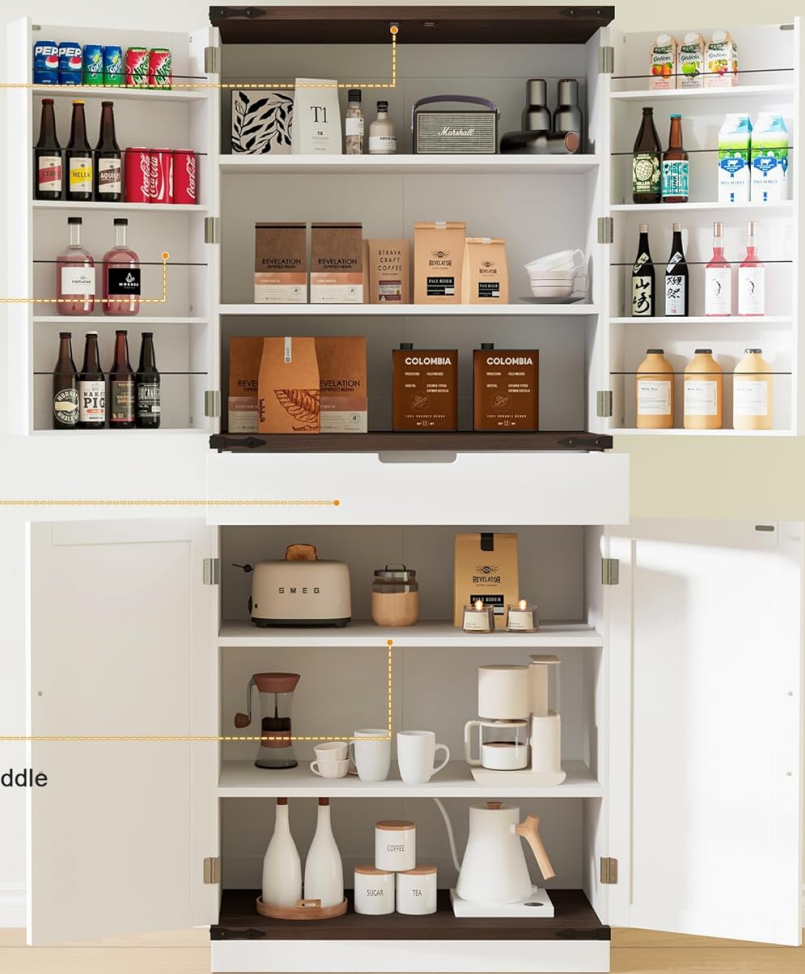
8-door shelves provide you with more storage functions

Smooth Drawer

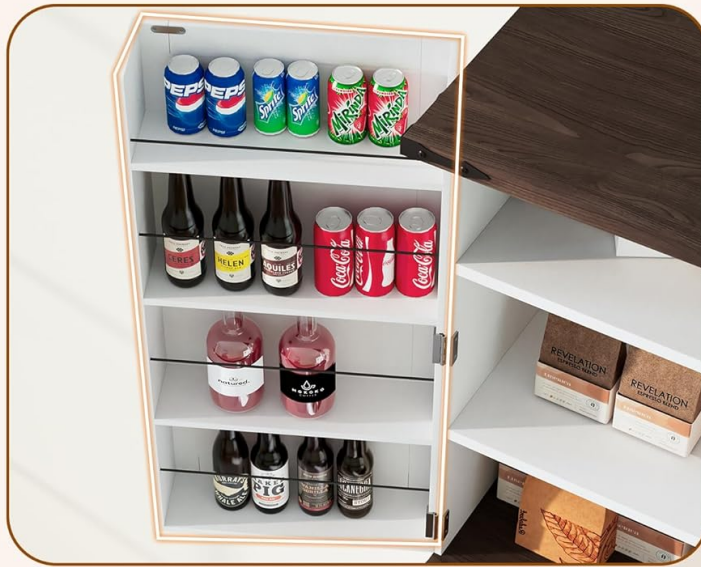
Easy access to cutlery, forks, spoons and other utensils

Adjustable Shelf

The shelf within the cabinet middle cater to your different storage



A detailed view of the cabinet's interior, highlighting the magnetic door locks, the 8 door shelves, the smooth-gliding drawer, and the adjustable main shelves.



8 Door Shelves

Optimized door storage for easy access



A Large Drawer

Perfect for storing silverware, knives & forks, plates, or other household items.



A close-up showing the practical door shelves and the spacious pull-out drawer, demonstrating their capacity for various kitchen essentials.

6. MAINTENANCE AND CARE

Proper care will extend the life and maintain the appearance of your GRUSIGN storage cabinet.

- **Cleaning:** Wipe surfaces with a soft, damp cloth. Avoid using harsh chemicals, abrasive cleaners, or polishes that may damage the finish. Dry immediately with a clean cloth.
- **Spills:** Clean up spills immediately to prevent moisture damage to the engineered wood.
- **Protection:** The cabinet features a scratch-resistant finish, but it is still advisable to use placemats or coasters under hot or wet items to prevent marks.
- **Hardware Check:** Periodically check all screws and fasteners to ensure they remain tight. Retighten if necessary.
- **Environment:** Avoid exposing the cabinet to extreme temperature changes or direct sunlight, which can cause fading or warping.

7. TROUBLESHOOTING

If you encounter any issues with your GRUSIGN storage cabinet, please refer to the following common solutions:

- **Wobbly Cabinet:** Ensure the cabinet is placed on a level surface. Check all assembly screws and tighten them if loose. Verify that the anti-tip hardware is securely installed.
- **Doors Not Aligning:** Adjust the hinges on the doors. Most hinges allow for minor adjustments to align the doors properly. Refer to your assembly manual for specific hinge adjustment instructions.
- **Drawer Sticking:** Check that the drawer slides are correctly installed and free of obstructions. Ensure all screws on the drawer slides are tight. Lubricate slides with a silicone-based lubricant if necessary.
- **Missing Parts:** If any parts are missing or damaged upon arrival, do not proceed with assembly. Contact customer support immediately for assistance.

If these steps do not resolve your issue, please contact GRUSIGN customer support for further assistance.

8. SPECIFICATIONS

Feature	Detail
Brand	GRUSIGN
Model Name	CWG-CF-WHT
Color	White
Product Dimensions	15.6"D x 29.9"W x 72"H
Item Weight	115 Pounds
Weight Limit	100 Pounds (overall)
Material	Engineered Wood, Metal
Frame Material	Engineered Wood
Top Material Type	Engineered Wood
Back Material Type	Engineered Wood
Handle Material	Metal
Number of Shelves	6 (adjustable)
Number of Compartments	8 (on doors)
Special Feature	Adjustable Shelf, Anti-Tipping, Heavy Duty, Scratch Resistant
Mounting Type	Floor Mount
Installation Type	Freestanding
Room Type	Bedroom, Dining Room, Kitchen, Laundry Room, Living Room
Door Style	Flat Panel (Barn Doors)
Included Components	Doors, Drawers, Shelves
Assembly Required	Yes
UPC	774882456353

9. WARRANTY INFORMATION

The GRUSIGN 72-inch Tall Storage Cabinet is backed by a **12-month warranty** from the date of purchase. This warranty covers manufacturing defects and ensures worry-free use. Please retain your proof of purchase for any warranty claims. The warranty does not cover damage resulting from improper assembly, misuse, neglect, accidents, or normal wear and tear.

10. CUSTOMER SUPPORT

Your satisfaction is our top priority. If you have any questions, concerns, or require assistance with your GRUSIGN storage cabinet, please do not hesitate to contact our customer support team. We are committed to providing prompt and helpful service.

- **Contact Method:** Please refer to the contact information provided on your purchase receipt or the GRUSIGN official website.
- **Response Time:** We strive to respond to all inquiries within 12-24 hours, accounting for potential time differences.
- **Before Contacting:** Please have your model number (CWG-CF-WHT) and purchase details ready to expedite the support process.