



Manuals.plus /

- › GreenYi /
- › GreenYi AHD 1080P Trajectory License Plate Backup Camera User Manual

GreenYi GreenYi-393

GreenYi AHD 1080P Trajectory License Plate Backup Camera User Manual

Model: GreenYi-393

Features Installation Introduction Operation Package Contents Specifications Key Troubleshooting Warranty & Support

1. INTRODUCTION

This manual provides detailed instructions for the installation and operation of your GreenYi AHD 1080P Trajectory License Plate Backup Camera. This camera is designed to enhance rear visibility and assist with parking maneuvers for various vehicle types, including cars, trucks, SUVs, minivans, campers, RVs, and pickups. Please read this manual thoroughly before installation and use to ensure proper function and safety.

2. PACKAGE CONTENTS

Verify that all items listed below are included in your package:

- Backup Camera
- Video Cable (26FT)
- Power Cable (5FT)
- Butterfly Bracket Mount
- Installation Kits (screws, etc.)

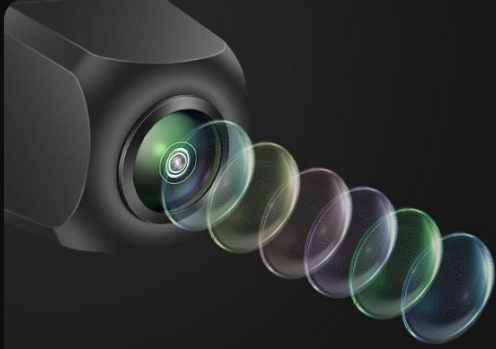
3. KEY FEATURES

- **AHD 1080P High Definition:** Equipped with a 1054 sensor chip, providing 1920x1080 pixel resolution for clear images. Features 0.01 lux low-light capability for enhanced night vision.
- **Dynamic Trajectory Guidelines:** The camera displays movable guidelines that automatically adjust based on the vehicle's steering direction, aiding in precise parking.

- **Wide Viewing Angle:** A 170-degree viewing angle minimizes blind spots, offering comprehensive rear coverage.
- **IP68 Waterproof Rating:** Designed to withstand harsh weather conditions and car washes, ensuring reliable operation.
- **Versatile Installation:** Can be installed behind the license plate or using the included butterfly bracket for mounting above the license plate.
- **Signal Compatibility:** Supports CVBS, AHD 1080P (25Hz/25FPS/PAL), and AHD 720P (25Hz/25FPS/PAL) video signals, switchable via dedicated cables.

6-GLASS LENS

Filter impurities and capture more lifelike quality picture.



F/1.5 APERTURE

Get more light input and make images brighter.



Image: The backup camera displays dynamic trajectory lines on a monitor, which adjust with the vehicle's movement to assist with parking.

Be Your Eyes

Make Night Driving Safer



Clearly see your road condition and drive with ease even at night.

AHD 1080P

Fisheye Lens

Starlight Night Vision

Image: The camera offers enhanced night vision, allowing for clear visibility in low-light conditions, as shown on a vehicle's display while driving at night.

IP 68 WATERPROOF

Don't worry about driving in the rain.



Image: The camera is shown being subjected to water spray, illustrating its IP68 waterproof design for durability in various weather conditions.

Your browser does not support the video tag.

Video: This video demonstrates the dynamic trajectory lines of the GreenYi AHD1080P Backup Camera in action, showing how they assist with parking by adjusting to steering input.

4. INSTALLATION

4.1 Mounting Options

The GreenYi backup camera offers two primary mounting methods:

- **License Plate Mount:** Install the camera directly behind your vehicle's license plate using the provided bracket.
- **Butterfly Bracket Mount:** Use the butterfly bracket to mount the camera above the license plate or in another suitable location. The camera body is 30-degree adjustable for optimal viewing angle.

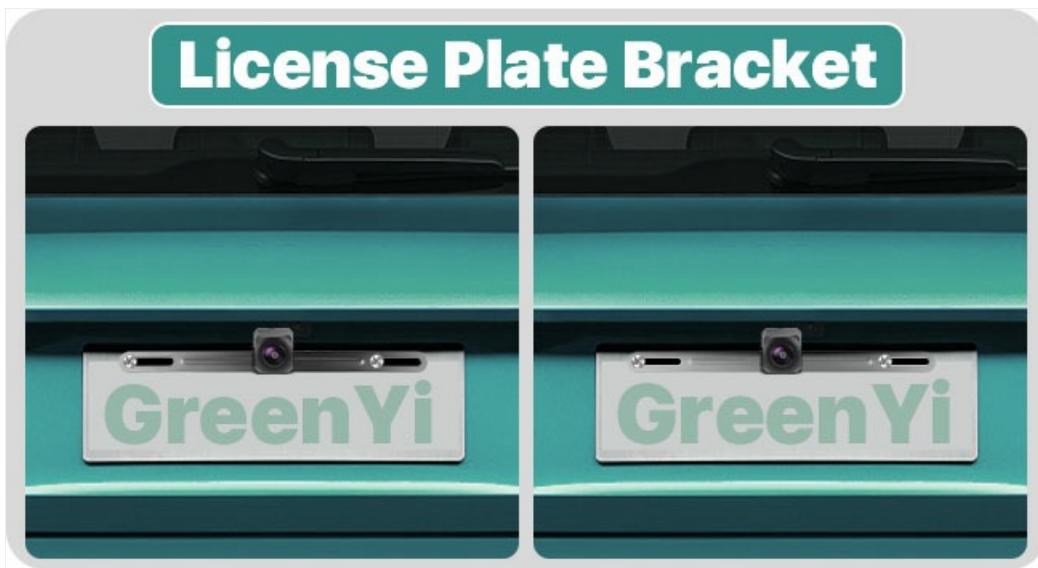


Image: The camera is shown installed using the license plate bracket, providing a discreet mounting solution.

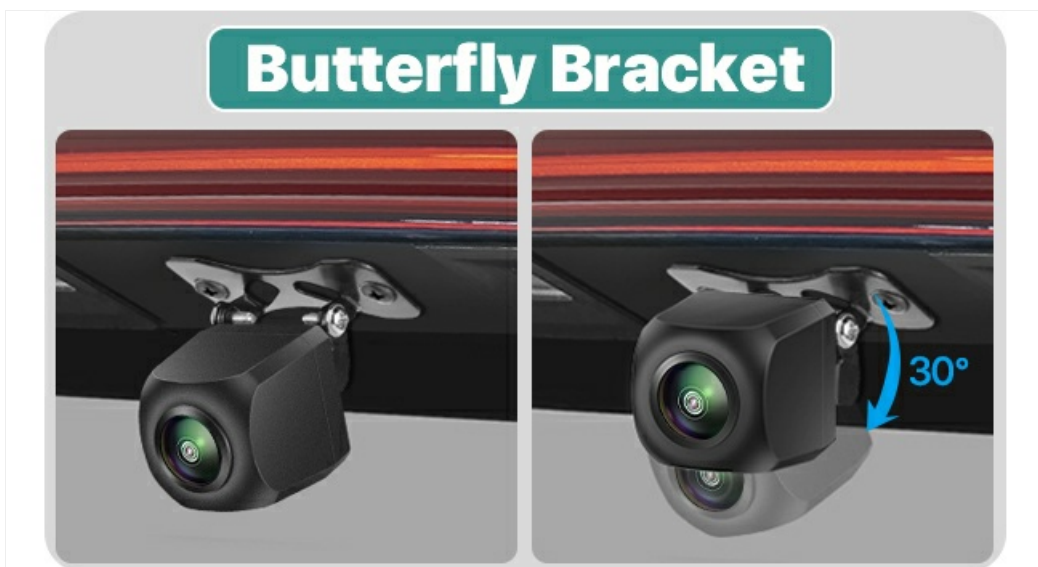
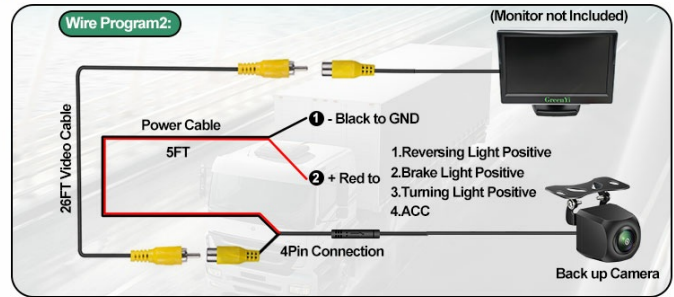
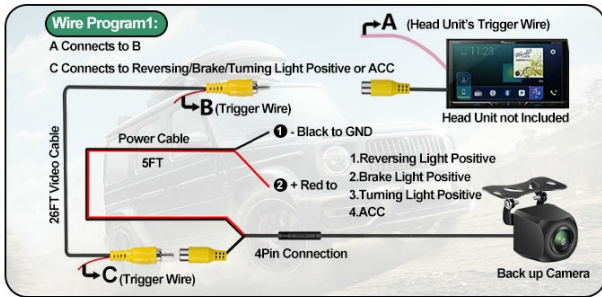


Image: The camera is mounted with the butterfly bracket, highlighting its adjustable angle for flexible positioning.

4.2 Wiring Diagram

The camera connects to your vehicle's display system via RCA. Ensure your monitor or head unit supports RCA video input.

Wiring Diagram for Easy Installation



NOTE:

1. Please test the backup camera before routing the video cable.
2. Connect trigger A with B if your head unit has a trigger wire A (Wire Program1). If not, no need connect them (Wire Program2).
3. Start the vehicle and gear on reverse to test the camera.

Image: A detailed wiring diagram illustrating connections for both head unit and standalone monitor setups. The diagram shows connections for power, video, and trigger wires.

Important Compatibility Note: This camera features an RCA video output plug. It is compatible only with monitors or head units that support RCA video input. It is not compatible with dash cams, mirror cams, or GPS units that do not have a dedicated RCA video input.



Image: An illustration highlighting the camera's RCA output and explicitly stating its incompatibility with devices like dash cams, GPS units, and mirror cams that lack RCA input.

5. OPERATION

5.1 Video Signal Switching

The camera outputs CVBS 30HZ/30FPS/NTSC video signal by default. To switch to AHD 1080P or AHD 720P, you must cut specific wires on the camera cable and adjust your monitor's settings accordingly.

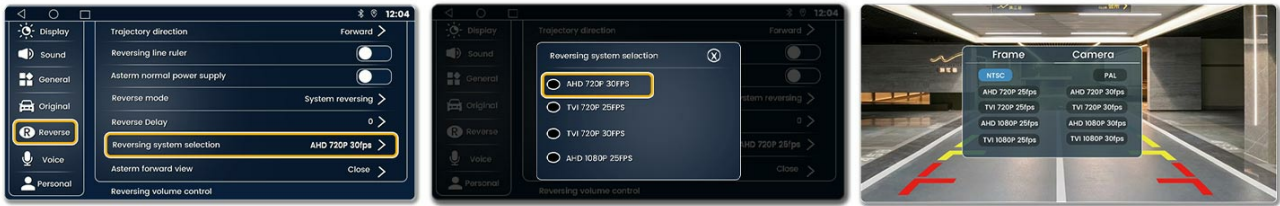
- **Cut the Green Wire:** Switches to AHD-1080P-25HZ/25FPS/PAL video signal.
- **Cut the White Wire:** Switches to AHD-720P-25HZ/25FPS/PAL video signal.
- **Cut Both Wires:** Reverts to CVBS 30HZ/30FPS/NTSC video signal.

NOTE: After cutting any wire, unplug and reconnect the 4-pin power cable to apply the change. Ensure your head unit or monitor supports the selected AHD format (AHD-1080P-25HZ/25FPS/PAL or AHD-720P-25HZ/25FPS/PAL). If these options are not available in your monitor's settings, it does not support the camera's AHD features, and you should use the default CVBS signal.

How to check if your Android head unit supports our 1080P AHD camera?

Go to Car settings >> Factory settings >> Reverse (picture) / Video settings >> Select AHD-1080P-25HZ/25FPS/PAL / AHD-720P-25HZ/25FPS/PAL

(ATTENTION: Our AHD backup camera only supports AHD-1080P-25HZ/25FPS/PAL or AHD-720P-25HZ/25FPS/PAL)



Tip: This camera is designed to produce CVBS video signal by default. Please unplug and reconnect the 4-pin power cable after cutting any wire.

If there is no options like AHD-1080P-25HZ/25FPS/PAL or AHD-720P-25HZ/25FPS/PAL, then your monitor does not support our camera's AHD 1080P / AHD 720P feature, please don't cut any switcher cable or cut both switcher cables to apply its CVBS video signal.

Image: This diagram illustrates the process of cutting the green and white wires on the camera cable to switch between CVBS, AHD 1080P, and AHD 720P video signal formats.

Your browser does not support the video tag.

Video: This video demonstrates the procedure for switching the video signal output of the GreenYi backup camera between CVBS, AHD 1080P, and AHD 720P by cutting specific wires and adjusting head unit settings.

5.2 Dynamic Trajectory Lines

The camera's integrated chip generates dynamic trajectory control guidelines that move with your steering wheel. This feature helps you visualize the vehicle's path when reversing. If your head unit also provides guidelines, you may need to disable the head unit's original guidelines to avoid overlapping displays.

6. SPECIFICATIONS

Feature	Detail
Model Number	GreenYi-393
Product Dimensions	7.86 x 0.87 x 1.1 inches (19.96 x 2.21 x 2.79 cm)
Item Weight	8 ounces (226.8 grams)
Sensor Chip	1054
Resolution	1920x1080 Pixels (AHD 1080P)
Minimum Illumination	0.01 Lux (for night vision)
Viewing Angle	170 Degrees (Real Angle of View)
Waterproof Rating	IP68
Video Signal Output	CVBS 30HZ/30FPS/NTSC (Default), AHD-1080P-25HZ/25FPS/PAL, AHD-720P-25HZ/25FPS/PAL
Voltage	12 Volts (DC)
Optical Sensor Technology	CMOS
Lens Type	Wide Angle, Fixed
Connector Type	4pin, RCA
Compatible Devices	Radio head unit which supports RCA connection, Screen monitor which supports RCA connection
Installation Type	On the License Plate or Butterfly Mount

7. TROUBLESHOOTING

If you encounter issues with your GreenYi backup camera, please refer to the following common solutions:

1. No Image Display:

- Ensure all power and video cables are securely connected.
- Verify the camera is receiving 12V DC power.
- Check if your monitor/head unit is set to the correct video input channel (e.g., AV-IN, Camera).
- Confirm the video signal format (CVBS, AHD 1080P, AHD 720P) matches both the camera's output (based on wire cuts) and your monitor's input settings.

2. Flickering or Unstable Image:

- Check for loose cable connections, especially the video cable.
- Ensure the power supply is stable and free from interference.
- Verify the video signal format is correctly matched between the camera and the display.

3. Overlapping Guidelines:

- If your head unit has its own parking guidelines, disable them in the head unit's settings to avoid interference with the camera's dynamic trajectory lines.

4. Poor Night Vision:

- Ensure the camera lens is clean and free from dirt or obstructions.
- Verify the camera is receiving adequate power.

5. Incorrect Video Format After Wire Cut:

- Remember to unplug and reconnect the 4-pin power cable after cutting any signal wire to reset the camera's output.
- Double-check your monitor's settings to ensure the correct AHD or CVBS format is selected.

8. WARRANTY AND SUPPORT

For any questions, technical assistance, or warranty inquiries regarding your GreenYi AHD 1080P Trajectory License Plate Backup Camera, please contact GreenYi customer support. Refer to the contact information provided with your product packaging or visit the official GreenYi website for support options. We are committed to providing timely assistance.