

Manuals+

[Q & A](#) | [Deep Search](#) | [Upload](#)

[manuals.plus](#) /

› [CYBORIS](#) /

› [CYBORIS S11-M 2-in-1 Magnetic Dual Splittable Bluetooth Speaker User Manual](#)

CYBORIS S11-M

CYBORIS S11-M 2-in-1 Magnetic Dual Splittable Bluetooth Speaker User Manual

Model: S11-M | Brand: CYBORIS

INTRODUCTION

This manual provides comprehensive instructions for the operation and maintenance of your CYBORIS S11-M 2-in-1 Magnetic Dual Splittable Bluetooth Speaker. Designed for versatility, this speaker offers both combined stereo sound and independent left/right channel audio when split. It features IPX6 waterproofing, Bluetooth V5.3 connectivity, and multiple playback options, making it suitable for various indoor and outdoor environments.

WHAT'S IN THE BOX

- CYBORIS S11-M Speaker Unit (2 splittable parts)
- TYPE-C Charging Cable
- 3.5mm Audio Cable
- Strap
- Instruction Manual (this document)

PRODUCT OVERVIEW AND FEATURES

Splittable Dual Speaker Design

The CYBORIS S11-M speaker consists of two independent units that can be magnetically joined to form a single speaker or separated for a true wireless stereo (TWS) experience. When combined, they produce a unified sound. When separated, they deliver distinct left and right audio channels, enhancing the stereo sound field.





Image: The two halves of the CYBORIS S11-M speaker, illustrating their magnetic separation.

Magnetic 2-in-1 Wireless Speaker

TWS Interconnection | Split Design
Colorful Light Effects

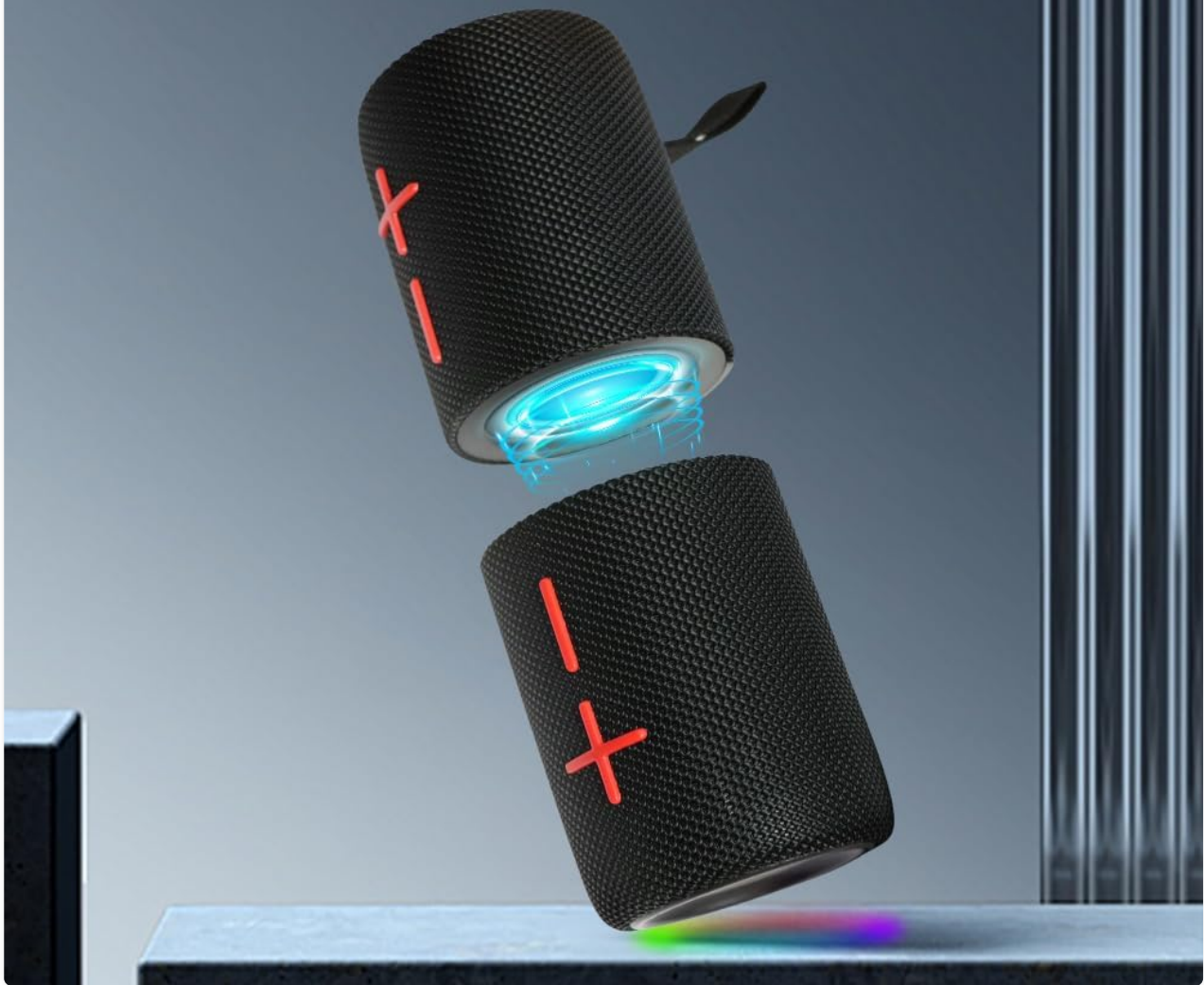


Image: Two speaker units operating independently, connected wirelessly to a laptop for stereo sound.

Universal Magnetic Attachment

Each speaker unit is equipped with strong magnets, allowing it to securely attach to various metallic surfaces such as refrigerators, metal poles, or vehicle bodies. This feature provides flexible placement options for your audio experience.

TWS INTERCONNECTED PLAYBACK

The detached speakers can automatically connect when turned on simultaneously, forming left and right channels for a surround stereo sound field, creating an immersive music experience



Image: Speaker attached to a refrigerator, highlighting its magnetic capability.

High-Fidelity Sound and Bluetooth 5.3

The speaker system delivers 20W of audio output with dynamic bass diaphragms, providing clear and undistorted HiFi sound. Bluetooth V5.3 ensures a stable and fast wireless connection, with an effective range of over 18 meters (approximately 60 feet) in open areas.

HIGH POWER LARGE SOUND FIELD

20W dual speakers with dynamic bass diaphragms,
2.0 channel stereo output, clear and
transparent sound without distortion, enjoy Hi-Fi sound
quality anytime, anywhere.



Image: Internal view of the speaker drivers, emphasizing sound quality features.

Multifunctional and Versatile Playback

Beyond wireless Bluetooth connectivity, the speaker supports music playback via TF (Micro SD) card and AUX wired input, offering multiple options for audio sources.

MULTIPLE MUSIC PLAYBACK MODES

In addition to wireless mode, it also supports TF card playback and AUX wired input playback, with multiple digital audio file decodings



Image: Ports for TF card and AUX input, demonstrating versatile playback options.

IPX6 Waterproof Rating

With an IPX6 waterproof rating, the speaker is protected against powerful water jets, making it suitable for outdoor use and resistant to splashes or rain.

IPX6 WATERPROOF

Sealed waterproof cavity structure, fearless of rain can be used with confidence both indoors and outdoors



Image: Speaker enduring water splashes, showcasing its waterproof design.

Long-Lasting Battery Life

Each speaker unit is powered by a 2000mAh polymer lithium battery, totaling 4000mAh when combined. This provides up to 24 hours of continuous playback on a single charge, ideal for extended use.

LONG-LASTING BATTERY LIFE

Built-in 4000mAh polymer lithium battery, High-efficiency and long-lasting power supply



Image: Speaker in an outdoor environment, representing its extended battery performance.

Enhanced User Experience

The speaker includes a built-in high-definition noise-canceling microphone for hands-free calling. Dazzling RGB lighting effects sync with the music, adding a visual element to your listening experience. Easy-to-use button controls provide intuitive operation.

COLORFUL LIGHTS

The breathing light is turned on by default and the colorful glare dances with the rhythm of the music and the passionate music and cool lighting effects make life more pleasant



Image: Top view of the speaker with active RGB lighting, highlighting the visual effects.

Official Product Video

Your browser does not support the video tag.

Video: An official product video from CYBORIS demonstrating the features and functionality of the Magnetic Dual Bluetooth Speaker, including its splittable design, magnetic attachment, and RGB lighting.

SETUP

Initial Charging

Before first use, fully charge both speaker units using the provided TYPE-C charging cable. Connect the cable to a standard USB power adapter (not included). The charging indicator light will typically turn off or change color once fully charged.

Powering On/Off

- To Power On: Press and hold the Power button on each speaker unit for approximately 3 seconds until you hear an audible prompt and the indicator lights illuminate.
- To Power Off: Press and hold the Power button on each speaker unit for approximately 3 seconds until you hear an audible prompt and the indicator lights turn off.

Bluetooth Pairing (Single Speaker Mode)

1. Ensure the speaker is powered on and in Bluetooth pairing mode (indicator light will typically flash blue).
2. On your device (smartphone, tablet, laptop), enable Bluetooth and search for available devices.
3. Select "CYBORIS S11-M" from the list of found devices.
4. Once connected, you will hear a confirmation tone, and the indicator light will turn solid blue.

True Wireless Stereo (TWS) Pairing (Dual Speaker Mode)

For an immersive stereo experience, you can pair both speaker units together.

1. Ensure both speaker units are fully charged and powered off.
2. Power on both speaker units simultaneously. They will automatically attempt to pair with each other.
3. Once successfully paired with each other, you will hear a confirmation tone (e.g., "Left Channel", "Right Channel"). The indicator lights on both speakers will then flash blue, indicating they are ready to pair with your device.
4. On your device, enable Bluetooth and search for available devices.
5. Select "CYBORIS S11-M" from the list. Only one "CYBORIS S11-M" entry should appear for the combined pair.
6. Once connected, you will hear a confirmation tone, and the indicator lights on both speakers will turn solid blue.

Note: If the speakers do not automatically pair with each other, try powering them off and on again, ensuring they are close to each other.

OPERATING INSTRUCTIONS

Button Functions

Each speaker unit has identical controls. When in TWS mode, controls on either speaker will affect both.

- **Power Button (Power Symbol):**

- Press and hold for 3 seconds: Power On/Off.
- Short press: Play/Pause music; Answer/End call.
- Double press: Activate voice assistant (if supported by connected device).

- **Volume Up Button (+):**

- Short press: Increase volume.
- Press and hold: Next track.

- **Volume Down Button (-):**

- Short press: Decrease volume.
- Press and hold: Previous track.

- **Mode Button (M):**
 - Short press: Cycle through playback modes (Bluetooth, TF Card, AUX).
 - Press and hold: Toggle RGB lighting effects.

Playback Modes

- **Bluetooth Mode:** Default mode after pairing. Stream audio wirelessly from your device.
- **TF Card Mode:** Insert a Micro SD card (max 32GB, FAT32 format) with audio files into the TF card slot. The speaker will automatically switch to TF card mode and begin playback. Use the Volume +/- buttons for track navigation.
- **AUX Mode:** Connect an audio device using the provided 3.5mm audio cable to the AUX port. The speaker will automatically switch to AUX mode. Control playback from your connected device.

Hands-Free Calling

- **Answer Call:** Short press the Power button.
- **End Call:** Short press the Power button during a call.
- **Reject Call:** Press and hold the Power button for 2 seconds during an incoming call.

RGB Lighting

The speaker features dynamic RGB lighting effects. Press and hold the Mode button to cycle through different lighting modes or to turn the lighting off.

MAINTENANCE

- **Cleaning:** Wipe the speaker with a soft, damp cloth. Do not use abrasive cleaners or solvents.
- **Water Resistance:** The speaker is IPX6 waterproof. While it can withstand powerful water jets, do not submerge it in water for extended periods. Ensure the charging port and AUX/TF card slots are securely sealed with their rubber covers when exposed to water.
- **Storage:** Store the speaker in a cool, dry place away from direct sunlight and extreme temperatures.
- **Battery Care:** To prolong battery life, avoid fully discharging the battery frequently. Charge the speaker regularly, even if not in use for extended periods (e.g., once every 3 months).

TROUBLESHOOTING

Problem	Possible Cause	Solution
Speaker does not power on.	Low battery.	Charge the speaker fully.
Cannot pair with Bluetooth device.	Speaker not in pairing mode; Device Bluetooth off; Too far from device.	Ensure speaker is flashing blue; Turn on device Bluetooth; Move speaker closer to device (within 18m).
No sound or low volume.	Volume too low on speaker or device; Incorrect mode selected.	Increase volume on both speaker and device; Press Mode button to select correct input (BT/TF/AUX).

Problem	Possible Cause	Solution
TWS pairing fails.	Speakers too far apart; Already paired to a device.	Ensure both speakers are powered off, then power on simultaneously close to each other. Disconnect from any previously paired devices.
Sound distortion.	Volume too high; Low battery; Interference.	Reduce volume; Charge speaker; Move away from sources of interference.

SPECIFICATIONS

Feature	Detail
Model Name	S11
Item Model Number	S11-M
Brand	CYBORIS
Speaker Type	Outdoor, Portable, Splittable
Connectivity Technology	Bluetooth V5.3
Bluetooth Range	Up to 18 meters (60 feet)
Speaker Maximum Output Power	20 Watts (total)
Audio Output Mode	Stereo (2.0 Channel)
Frequency Response	20 KHz (upper limit, typical for consumer electronics)
Water Resistance Level	IPX6 Waterproof
Battery Capacity	2 x 2000mAh (Total 4000mAh) Polymer Lithium Battery
Battery Life	Up to 24 Hours
Control Method	Touch Buttons
Supported Playback Modes	Bluetooth, TF Card, AUX Wired Input
Product Dimensions	3"D x 3"W x 8"H (combined)
Item Weight	0.7 Kilograms (1.54 pounds)


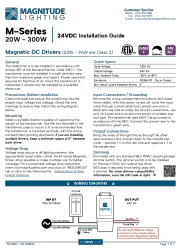
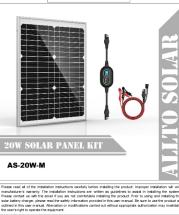


WARRANTY AND SUPPORT

Your CYBORIS S11-M speaker comes with a limited warranty. Please refer to the warranty card included in your product packaging for specific terms and conditions. For technical support, troubleshooting assistance, or warranty claims, please contact CYBORIS customer service through the retailer where you purchased the product or visit the official CYBORIS website.

For further assistance, you may visit the [CYBORIS Store on Amazon](#).

© 2025 CYBORIS. All rights reserved.

Related Documents - S11-M

	<p>SM608 Waterproof Sport Headset Quick Start Guide - Cyboris</p> <p>Concise and SEO-optimized HTML guide for the Cyboris SM608 Waterproof Sport Headset. Covers features, operation, safety, and warranty information.</p>
	<p>Magnitude M-Series 24VDC Magnetic DC Drivers Installation Guide</p> <p>This guide provides installation instructions for Magnitude Lighting's M-Series 24VDC Magnetic DC Drivers (20W-300W). It covers general safety, installation precautions, mounting, voltage drop, quick specifications, input/output wiring, and dimming compatibility, along with a textual description of the wiring diagram.</p>
	<p>Allto Solar 20W Mono Solar Panel Kit AS-20W-M User Manual</p> <p>User manual for the Allto Solar 20W Mono Solar Panel Kit (Model AS-20W-M), including safety precautions, features, installation guide, technical specifications, and troubleshooting for the 10A MPPT charge controller.</p>
	<p>Bosch Klima Uredaji: Split i Multi Split Sustavi za Vaš Dom</p> <p>Otkrijte Bosch klima uređaje serije Climate. Uživajte u optimalnoj udobnosti, energetskej učinkovitosti i naprednim funkcijama za grijanje i hlađenje vašeg doma ili ureda.</p>
	<p>Mackie M-800 High-Current Power Amplifier - Specifications and Features</p> <p>Explore the Mackie M-800, a powerful dual-channel high-current power amplifier featuring Fast Recovery circuitry, T-Design cooling, and versatile connectivity for professional audio applications. Includes detailed specifications and features.</p>



[Bopmen Y71-M Headphones FAQ Quick Guide: Troubleshooting Connectivity & Audio Issues](#)

This quick guide from Bopmen provides solutions for common issues with the Y71-M headphones, including PC detection problems, pairing failures, and microphone/audio connection problems. Learn how to troubleshoot sound settings, drivers, and adapter compatibility.