

Okin OKSM6545W3624BO

Okin Small Electric Standing Desk (36x24 Inch) Instruction Manual

Model: OKSM6545W3624BO

1. INTRODUCTION

Thank you for choosing the Okin Small Electric Standing Desk. This height-adjustable desk is designed to provide a versatile and ergonomic workspace for your home office, gaming setup, or other activities. This manual provides essential information for the safe and efficient assembly, operation, and maintenance of your new desk.

2. IMPORTANT SAFETY INFORMATION

Please read all safety instructions carefully before assembly and use.

- Always follow the assembly instructions carefully.
- Do not exceed the weight limit of 154 lbs (real-world tested up to 176 lbs).
- Keep the desk on a stable surface and ensure it is properly anchored.
- Be cautious when adjusting the height of the desk to prevent injury.
- Keep the desk clear of any obstructions that could interfere with its movement.

3. SETUP AND ASSEMBLY

The Okin Electric Standing Desk is designed for easy assembly with pre-drilled holes and included accessories. Follow the steps below for a smooth setup process.

3.1 Unpacking and Component Check

Carefully unpack all components and verify against the parts list in your physical manual. Ensure all screws and tools are present.

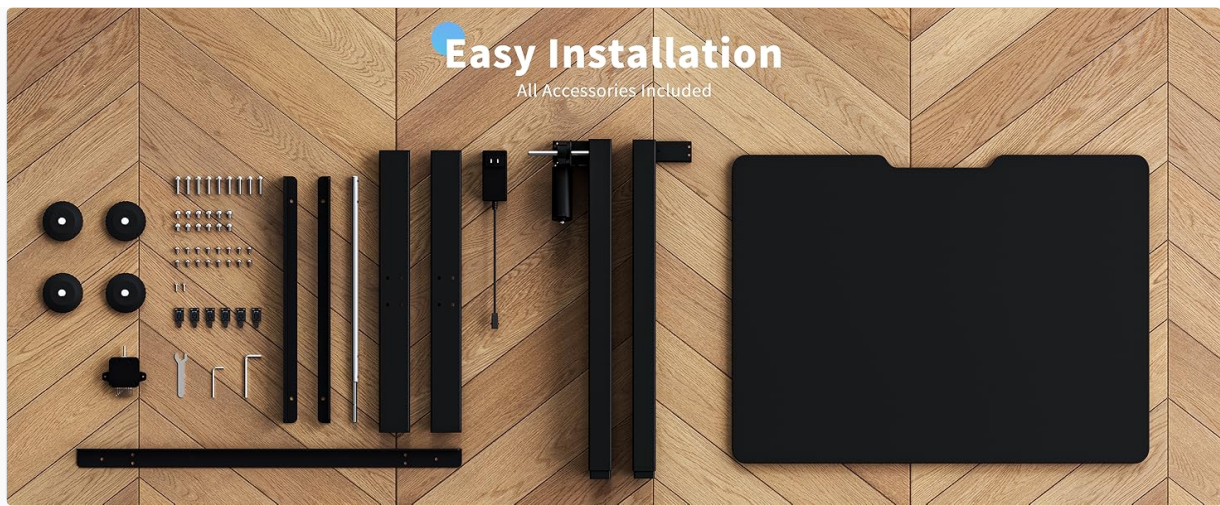


Figure 3.1: All accessories included for easy installation.

3.2 Frame Assembly

Assemble the T-shaped steel frame according to the detailed instructions provided in the video below. Ensure all screws are tightened securely for stability.

Your browser does not support the video tag.

Video 3.1: Detailed installation guide for the Okin Small Electric Standing Desk frame.

3.3 Attaching the Desktop

Once the frame is assembled, carefully place the desktop onto the frame and secure it using the provided screws. The desktop features grooves for cable management, allowing the desk to be placed flush against a wall.

Easy Cable Arrangement



Figure 3.2: Desktop with integrated cable management features.

3.4 Adjustable Foot Pads

The desk includes adjustable foot pads for enhanced stability on uneven surfaces. Rotate the foot pads to level the desk as needed.



Figure 3.3: Adjustable foot pads for leveling the desk.

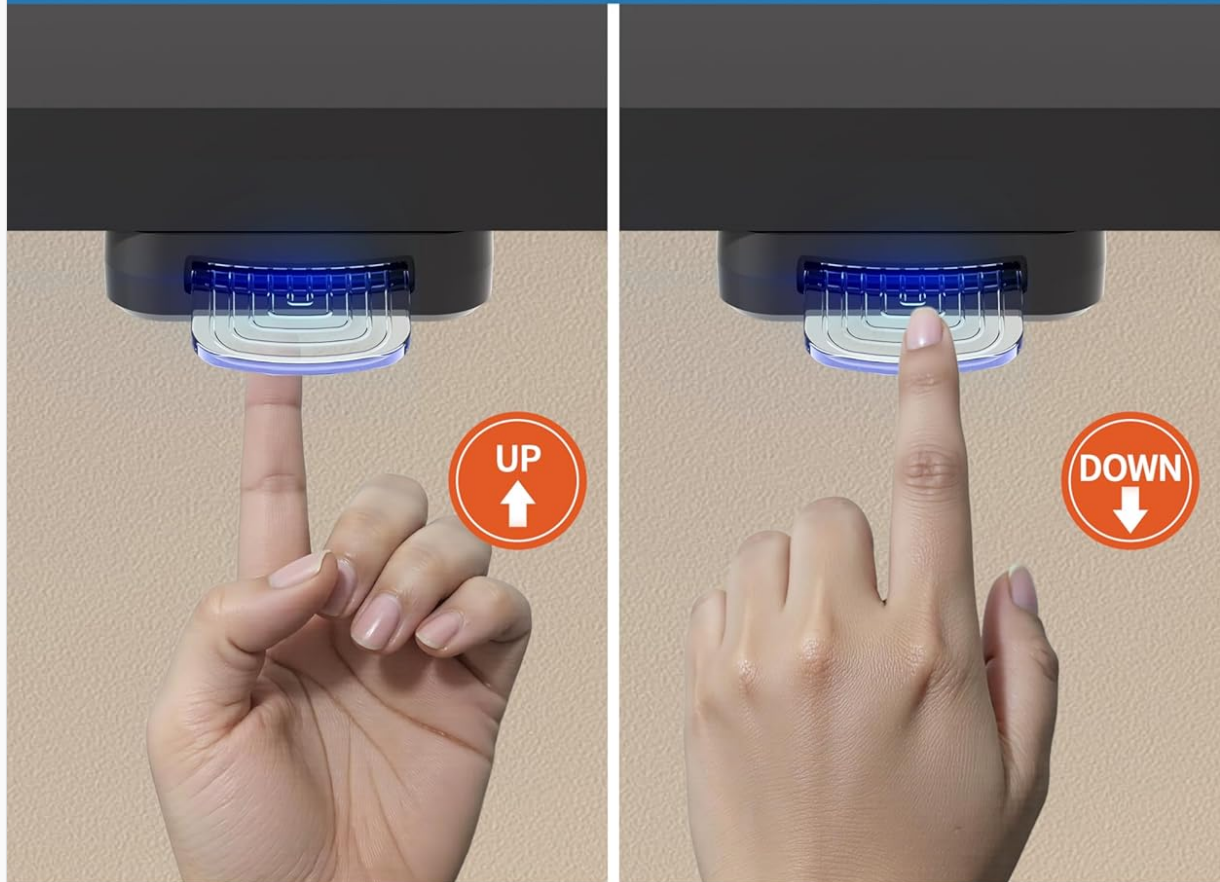
4. OPERATING INSTRUCTIONS

Your Okin Electric Standing Desk features a simple control system for effortless height adjustment.

4.1 Height Adjustment

The desk adjusts smoothly from 27.56 inches to 45.28 inches in height. Use the intuitive controller located on the underside of the desktop to raise or lower the desk to your desired ergonomic position.

Simple Controller



Easy To Adjust
Desk Height



Clear Controller With
Cool Blue Light

Figure 4.1: Simple controller for height adjustment.

The motor operates with low noise (below 50 dB), ensuring minimal disruption to your work environment or surrounding activities.

Custom Ergonomic Comfort



Figure 4.2: Ergonomic height adjustment for improved posture and productivity.

5. MAINTENANCE

To ensure the longevity and optimal performance of your Okin Electric Standing Desk, follow these simple maintenance guidelines:

- **Cleaning:** Wipe the desktop and frame with a dry, soft cloth. Avoid abrasive cleaners or harsh chemicals that could damage the finish.
- **Regular Checks:** Periodically check all screws and connections to ensure they remain tight. Retighten if necessary.
- **Cable Management:** Keep cables organized and free from entanglement to prevent damage to the motor or control unit.

6. TROUBLESHOOTING

If you encounter any issues with your Okin Electric Standing Desk, please refer to the following common troubleshooting tips:

- **Desk Not Moving:** Ensure the power cord is securely plugged into both the desk and a working electrical outlet. Check for any obstructions under or around the desk that might prevent movement.
- **Error Code E-3:** If the control panel displays an 'E-3' error code, this typically indicates a motor or sensor issue. Try unplugging the desk for a few seconds and then plugging it back in to reset the system. If the error persists, contact customer support.
- **Uneven Height:** If the desk appears uneven, adjust the foot pads on the bottom of the legs to stabilize it.
- **Unusual Noise:** While the motor operates quietly, any unusual or loud noises during adjustment may indicate an issue. Stop operation and inspect the mechanism for any visible problems.

7. SPECIFICATIONS

Detailed specifications for the Okin Small Electric Standing Desk:



Figure 7.1: Key dimensions of the Okin Electric Standing Desk.

Feature	Detail
Brand	Okin
Model Number	OKSM6545W3624BO
Product Dimensions	40"D x 27.5"W x 24"H (Note: Item Depth is 36 inches, Tabletop Thickness is 24 inches, Product Dimensions are often listed as D x W x H, but here it seems to refer to the overall footprint and height range. The tabletop is 36x24 inches.)
Color	Black

Feature	Detail
Top Material Type	Wood
Base Material	Alloy Steel
Minimum Height	27.56 Inches
Maximum Height	45.28 Inches
Maximum Weight Recommendation	176 Pounds
Noise Level	<50 dB
Included Components	Headphone Hook
Required Assembly	Yes

7.1 Powerful Motor

The desk is equipped with a powerful motor, rigorously tested for 20,000 lifting cycles, ensuring reliable and smooth height adjustments.

Powerful Motor

20,000 times

lifting tested fully loaded



Low Noise <50dB



Power Input
100V-240V



Figure 7.2: Internal view of the powerful and quiet motor.

7.2 Sturdy Construction

The desk features a robust alloy steel frame with a T-shaped bracket design, providing excellent stability and durability.



Figure 7.3: Sturdy steel construction with T-shaped bracket.

8. WARRANTY

The Okin Small Electric Standing Desk comes with a Limited Warranty. For specific details regarding coverage and duration, please refer to the warranty information included with your product packaging or contact Okin customer support.

Optional protection plans are available for purchase, including 2-Year and 3-Year plans, as well as a monthly Complete Protect plan.

9. CUSTOMER SUPPORT

For further assistance, technical support, or warranty claims, please contact Okin customer service through the retailer where you purchased the product or visit the official Okin website.