

## Unineo 24IN-36-11G

# Unineo 70-Inch Fireplace TV Stand (Model 24IN-36-11G) User Manual

Brand: Unineo | Model: 24IN-36-11G

[Overview](#) [Assembly](#) [Operation](#) [Storage](#) [Maintenance](#) [Troubleshooting](#) [Specifications](#) [Support](#)

## 1. SAFETY INFORMATION

Please read all safety warnings and instructions carefully before assembly and use. Failure to follow these instructions may result in electric shock, fire, property damage, or personal injury.

- Always ensure proper ventilation when using the fireplace.
- Do not operate the fireplace and cabinet if they are not both present.
- Keep the fireplace and cabinet away from flammable materials.
- Do not place heavy objects on the cabinet that could cause it to tip over.
- Always follow the assembly instructions carefully to ensure the cabinet is stable and secure.
- Use caution when operating the fireplace, as it can become very hot.
- Keep children and pets away from the fireplace when it is in use.
- Ensure the power cord is not pinched or routed in a way that could cause damage.
- Do not use this appliance outdoors.
- Unplug the fireplace from the power outlet before cleaning or performing maintenance.

## 2. PRODUCT OVERVIEW

The Unineo 70-Inch Fireplace TV Stand is designed to accommodate TVs up to 80 inches, providing both media storage and an integrated electric fireplace. It features a rustic oak finish, multiple storage drawers, and open shelving for media devices.



*Figure 2.1: Front view of the Unineo 70-Inch Fireplace TV Stand.*

**Key Features:**

- Accommodates TVs up to 80 inches.
- Integrated 36-inch electric fireplace with multiple flame and ember color modes.
- 1400W heater with thermostat (62°F-90°F) and timer (0.5-9H).
- Remote and button control for fireplace functions.
- Multiple storage drawers and open compartments.
- Durable engineered wood construction with a rustic finish.

### Weight Limitation



15 KG / 33 lb Shelf  
60 KG / 132 lb Top



### COME IN 2 BOXES

(May not arrive at the same time)



Figure 2.2: Product dimensions and packaging information. The unit ships in two boxes.

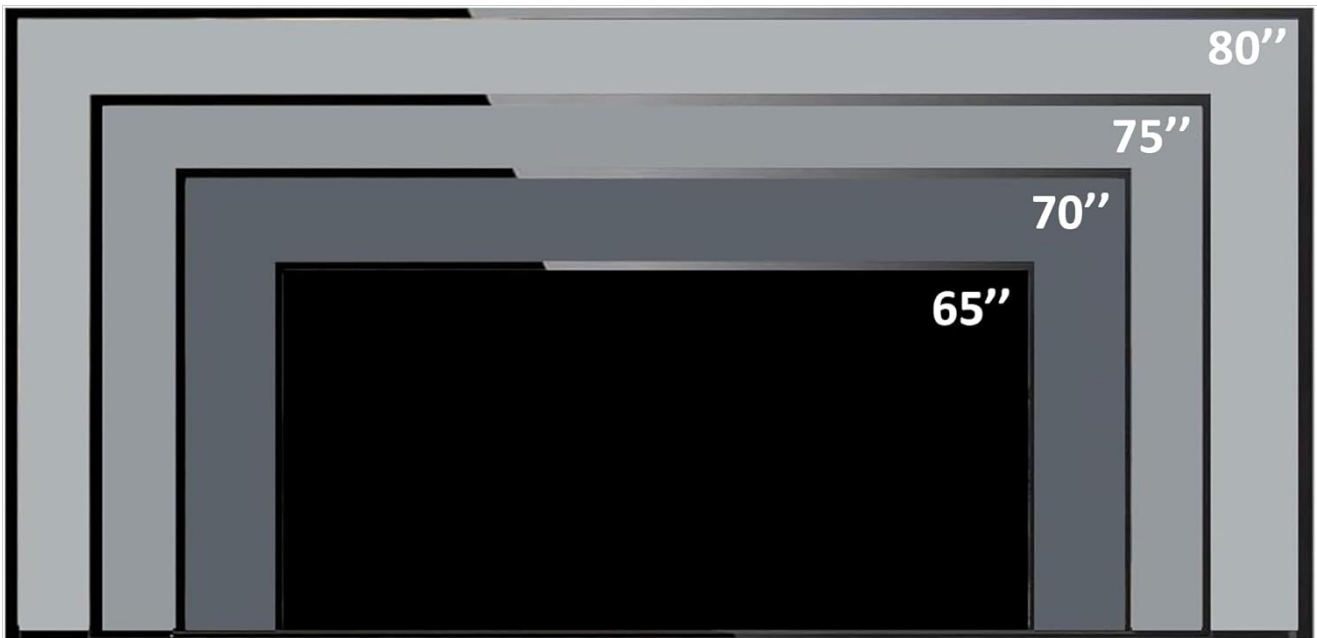


Figure 2.3: Visual guide for TV size compatibility, supporting TVs up to 80 inches.

### 3. ASSEMBLY INSTRUCTIONS

This TV stand requires assembly. Each component is numbered for easy identification. For optimal assembly, it is recommended that two people work together. No special electrical wiring is required; the fireplace unit is a simple plug-in device.

#### Before You Begin:

1. **Unpack All Parts:** Carefully remove all components from the packaging and lay them out on a clean, soft surface to prevent scratches. Verify all parts are present against the included parts list.
2. **Identify Hardware:** Separate and identify all hardware (screws, dowels, cam locks, etc.).
3. **Tools Required:** A Phillips head screwdriver is typically required. A power drill with appropriate bits can speed up assembly but use caution to avoid overtightening.
4. **Follow Step-by-Step Guide:** Refer to the detailed assembly manual included in your packaging for specific step-by-step instructions and diagrams.

#### Important Assembly Tips:

- Do not fully tighten screws until the entire section is assembled.

- Ensure all connections are secure before moving the unit.
- The electric fireplace unit is inserted into the main cabinet structure during assembly.



*Figure 3.1: Detail of the base construction, highlighting stability.*

## 4. OPERATING THE ELECTRIC FIREPLACE

---

The integrated 36-inch electric fireplace offers various settings for ambiance and heating. It can be controlled via the front panel buttons or the included remote control.

### **Fireplace Features:**

- **Flame Color Modes:** Choose from 8 LED flame color modes to match your mood or decor.
- **Ember Color Modes:** Select from 6 ember bed color modes.
- **Flame Brightness:** Adjust the flame intensity with 3 dimmer levels.
- **Flame Speed:** Control the speed of the flame effect with 5 levels.
- **Fuel Bed Options:** The fireplace comes with both log sets and crystal media, allowing you to customize the look.
- **Heater Function:** A 1400W heater provides supplemental heat for rooms up to 800 sq. ft. The thermostat can be set between 62°F and 90°F. The heater can be turned off while the flame effect remains active for year-round use.
- **Timer:** Set an automatic shut-off timer from 0.5 to 9 hours.

# 36 Inch Log & Crystal Electric Fireplace



Figure 4.1: Fireplace control panel and display, illustrating flame and heat settings.

**Buy One Get 2 Different Experience!**



*Traditional Log Set Insert Looking*



*Modern Crystal Looking*

*Figure 4.2: The fireplace offers both traditional log set and modern crystal bed options.*

*Video 4.1: Demonstration of the Unineo Farmhouse 70 Inch Fireplace TV Stand, showcasing its features including the electric fireplace and drawers.*

## 5. STORAGE FEATURES

The TV stand is equipped with ample storage to help keep your living space organized.

- **Drawers:** Four large faux double drawers (eight visible drawer fronts) provide generous enclosed storage for various items. These drawers feature smooth-sliding rails for easy access.
- **Open Shelving:** Central open compartments above the fireplace are ideal for media devices such as cable boxes, gaming consoles, or soundbars, with pre-drilled cable management holes to keep wires tidy.



Figure 5.1: Overview of the spacious tabletop and drawer storage.



Figure 5.2: Detail of an open drawer, illustrating its storage capacity.

## 6. MAINTENANCE

Regular maintenance will help prolong the life and appearance of your TV stand and electric fireplace.

### Cabinet Care:

- Dust regularly with a soft, dry cloth.

- For spills, wipe immediately with a damp cloth and dry thoroughly.
- Avoid using harsh chemicals or abrasive cleaners, as they can damage the finish.
- Keep the unit away from direct sunlight and extreme temperature changes to prevent warping or fading.

#### Electric Fireplace Care:

- Ensure the fireplace is unplugged and cool before cleaning.
- Wipe the exterior surfaces with a soft, damp cloth.
- Clean the air intake/outlet vents periodically to ensure proper airflow and prevent overheating. Use a vacuum cleaner with a brush attachment if necessary.
- Do not attempt to open or service the internal components of the fireplace. Refer to qualified service personnel if issues arise.

## 7. TROUBLESHOOTING

If you encounter problems with your Unineo Fireplace TV Stand, refer to the following common issues and solutions:

Problem	Possible Cause	Solution
Fireplace does not turn on.	No power, power switch off, remote battery dead.	Check power cord connection, ensure wall outlet is functional, turn on main power switch on the unit, replace remote batteries.
No heat output.	Heater function off, thermostat set too low, air vents blocked.	Ensure heater function is activated, increase thermostat setting, clear any obstructions from air vents.
Remote control not working.	Dead batteries, obstruction, remote out of range.	Replace batteries, ensure clear line of sight to the fireplace sensor, operate within recommended range.
Unusual noise or smell.	New unit odor, dust accumulation, internal malfunction.	Initial odor is normal and will dissipate. Clean vents. If persistent or severe, discontinue use and contact support.
Drawers are stiff or not sliding smoothly.	Improper assembly, debris in rails, loose hardware.	Check assembly of drawer slides, clear debris from rails, tighten any loose screws on the slides.

If the problem persists after attempting these solutions, please contact Unineo customer support.

## 8. SPECIFICATIONS

Feature	Detail
Brand	Unineo
Model Name	24IN-36-11G
Color	Light Rustic Oak
Product Dimensions (D x W x H)	15.55" x 69.69" x 30.59"
Recommended Uses For Product	Entertainment Media
Material	Engineered Wood
Weight Limit (Tabletop)	120 lbs (54.4 kg)

Feature	Detail
Item Weight	167 lbs (75.7 kg)
Included Components	36" Electric Fireplace
Fireplace Heater Output	1400W
Fireplace Thermostat Range	62°F - 90°F
Fireplace Timer	0.5 - 9 Hours
Assembly Required	Yes

## 9. WARRANTY AND SUPPORT

---

For any questions, concerns, or issues regarding your Unineo Fireplace TV Stand, please contact UnineoHome customer support directly through the Amazon platform. Provide your order details and a clear description of the issue for prompt assistance.

**Overheat Protection:** The electric fireplace includes dual insurance overheat protection to ensure safe operation. If the unit overheats, it will automatically shut off. Allow it to cool down before attempting to restart.