

Manuals+

[Q & A](#) | [Deep Search](#) | [Upload](#)

manuals.plus /

- › [MSI](#) /
- › [MSI Codex Z2 Gaming Desktop A8NVP-436US User Manual](#)

MSI CodZ2A8NVP436

MSI Codex Z2 Gaming Desktop User Manual

Model: A8NVP-436US

INTRODUCTION

This manual provides essential information for setting up, operating, maintaining, and troubleshooting your MSI Codex Z2 Gaming Desktop. Please read this manual thoroughly before using your new system to ensure optimal performance and longevity. The MSI Codex Z2 is a high-performance gaming desktop designed for demanding applications and immersive gaming experiences, featuring an AMD R7-8700F processor and NVIDIA GeForce RTX 5070 graphics.



Image: The MSI Codex Z2 Gaming Desktop, showcasing its sleek design and internal RGB lighting.

WHAT'S IN THE BOX

Upon unboxing your MSI Codex Z2 Gaming Desktop, please verify that all the following items are included:

- MSI Codex Z2 Gaming Desktop Unit
- Power Cable
- Keyboard
- Mouse
- Documentation (Quick Start Guide, Warranty Card)

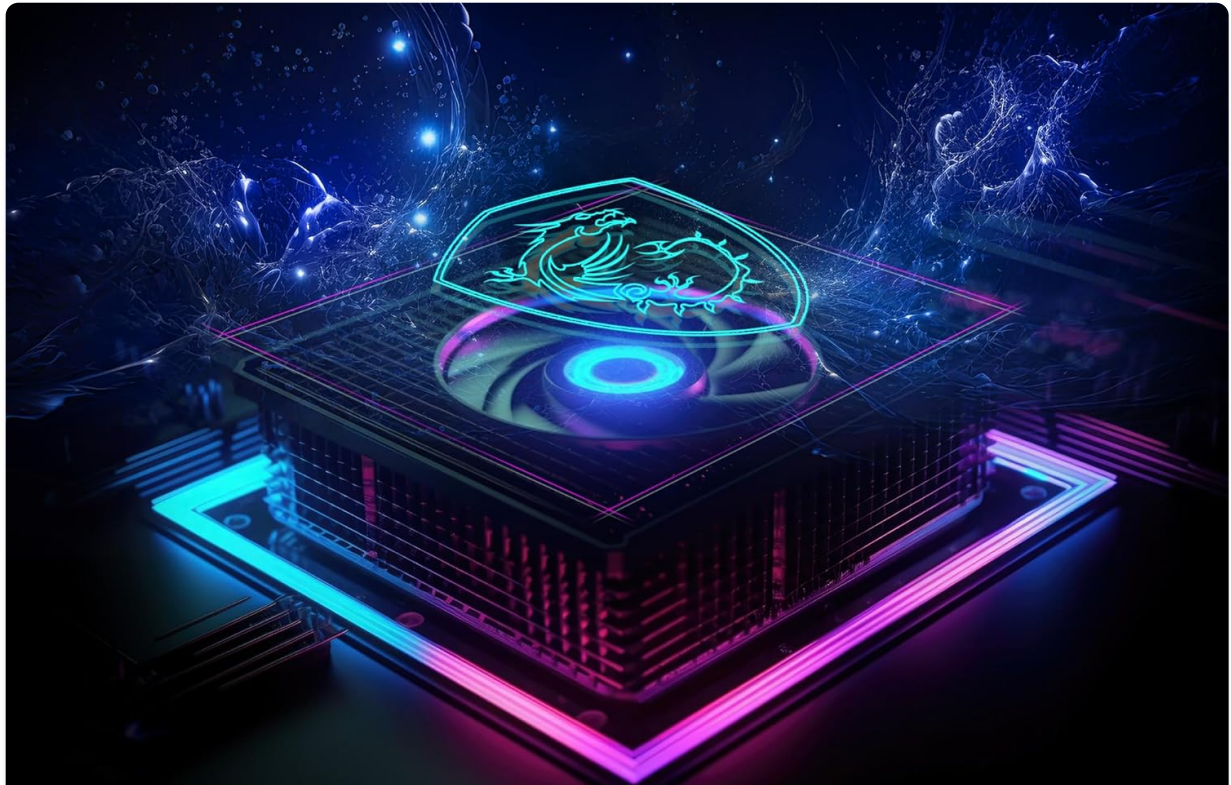
SETUP INSTRUCTIONS

1. Unpacking and Placement

- Carefully remove the desktop from its packaging.
- Place the desktop on a stable, flat surface with adequate ventilation. Ensure there is clear space around the air intake and exhaust vents.

2. Connecting Peripherals

Connect your monitor, keyboard, mouse, and other peripherals to the appropriate ports on the desktop. Refer to the port diagram below for guidance.



A FLAIR FOR AIR

Frozr AI Cooling in MSI gaming desktops learns and predicts system temperature to adjust fan speed, ensuring peak performance in a low-noise environment with AI assistance.

Image: Rear I/O panel with labeled ports including USB 2.0, USB 3.2 Gen 2 (Type-A and Type-C), LAN, Wi-Fi/Bluetooth antenna connectors, audio connectors, HDMI, and DisplayPort.

PC MAG READERS' CHOICE

GAMING DESKTOP BRANDS 2024

2 YEARS IN A ROW



Image: Front I/O panel with labeled ports including LED Switch, USB 3.2 Gen 2 Type-C, USB 3.2 Gen 1 Type-A, Mic-In, Audio-Out, Reset Button, and Power Button.

- **Monitor:** Connect your monitor(s) to the graphics card's HDMI or DisplayPort outputs.
- **Keyboard & Mouse:** Connect the included keyboard and mouse to any available USB ports.
- **Network:** For a wired connection, connect an Ethernet cable to the LAN port. For wireless, ensure the Wi-Fi antennas are securely attached.
- **Power:** Connect the power cable to the desktop's power input and then to a power outlet.

3. Initial Power On

- Press the power button on the front of the desktop.
- Follow the on-screen instructions to complete the Windows 11 Home setup.
- It is recommended to install the latest drivers and software updates via Windows Update and MSI Center for optimal performance.

OPERATING INSTRUCTIONS

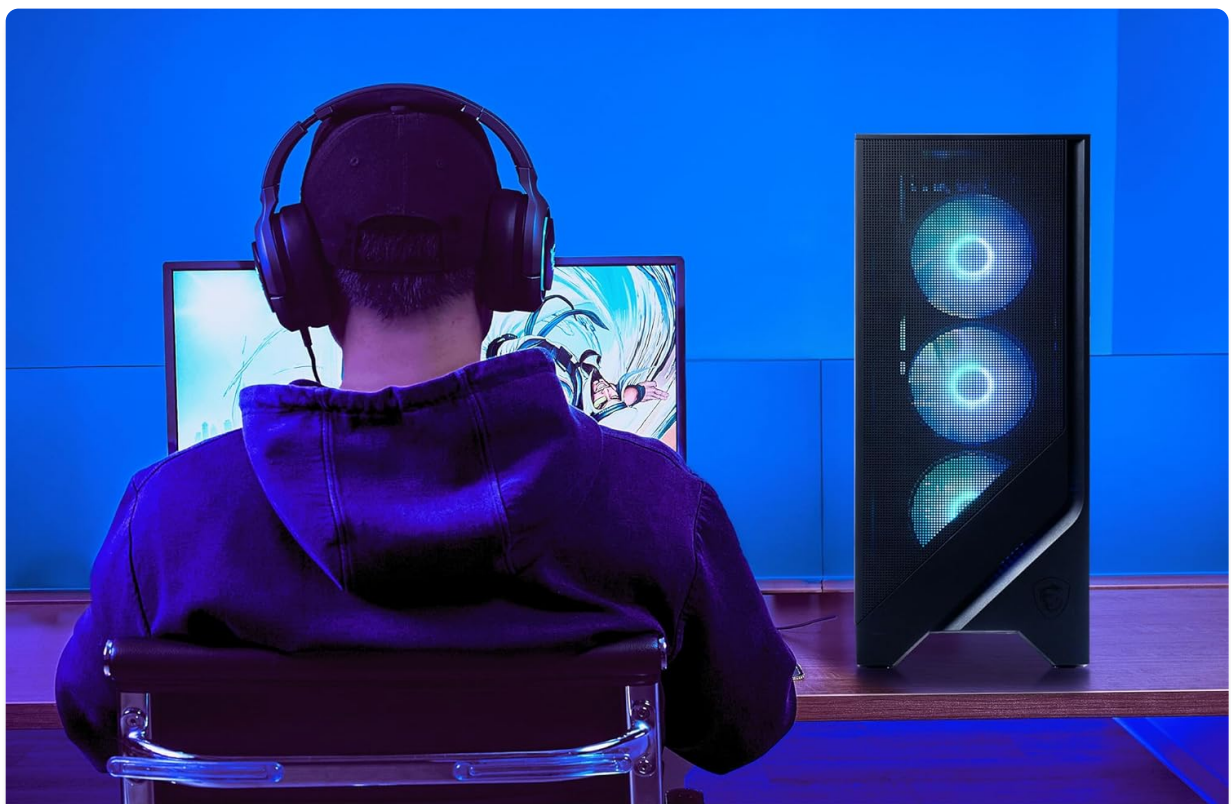
Power Management

- **Power On:** Press the power button on the front panel.
- **Shut Down:** Use the Windows Start Menu to select 'Power' then 'Shut down'.
- **Restart:** Use the Windows Start Menu to select 'Power' then 'Restart'.

MSI Center Software

The MSI Center software allows you to customize various aspects of your desktop, including RGB lighting, system performance, and fan speeds. Launch MSI Center from your desktop or Start Menu to access these features.

- **RGB Lighting:** Use the built-in RGB lighting controls in MSI Center or press the dedicated LED button on the front panel to cycle through lighting options.
- **Performance Modes:** Adjust system performance profiles for gaming, silent operation, or balanced use.
- **Fan Control:** Monitor and adjust fan curves for optimal cooling and noise levels. The Frozr AI Cooling feature intelligently adjusts fan speeds based on system temperature.



EASY TO **UPGRADE**

This DIY-style gaming desktop takes the guesswork out of DIY. Codex Z2 Desktops are handcrafted with high-quality MSI-standardized components, making the system simple to maintain and upgrade.

Image: Frozr AI Cooling in MSI gaming desktops learns and predicts system temperature to adjust fan speed, ensuring peak performance in a low-noise environment with AI assistance.

VR-Ready Capability

Your MSI Codex Z2 Gaming Desktop is VR-Ready. Ensure your VR headset meets the system requirements and connect it to the appropriate ports (HDMI, DisplayPort, USB 3.0) on your desktop. Install any necessary VR software and drivers as per your headset manufacturer's instructions.

MAINTENANCE

Cleaning

- Regularly clean the exterior of the desktop with a soft, dry cloth.
- Use compressed air to clear dust from the ventilation grilles and internal components (fans, heatsinks) every few months. Ensure the system is powered off and unplugged before cleaning.

Software Updates

- Keep your Windows operating system updated through Windows Update.
- Regularly update graphics drivers (NVIDIA GeForce Experience) and other system drivers (via MSI Center or MSI's official website) to ensure optimal performance and compatibility.
- Check for BIOS updates on the MSI support website.

Hardware Upgrades

The MSI Codex Z2 is designed for easy upgrades. Components such as RAM, storage drives (M.2 NVMe SSD), and graphics cards can be replaced or expanded. Refer to the MSI support website or a qualified technician for detailed upgrade procedures.



Image: The MSI Codex Z2 Gaming Desktop is designed with high-quality, MSI-standardized components, making the system simple to maintain and upgrade.

TROUBLESHOOTING

If you encounter issues with your MSI Codex Z2 Gaming Desktop, refer to the following common troubleshooting steps:

- **No Power:** Ensure the power cable is securely connected to both the desktop and the power outlet. Verify the power outlet is functional.
- **No Display:** Check that the monitor cable is securely connected to both the graphics card output and the monitor input. Ensure the monitor is powered on and set to the correct input source.
- **System Freezes/Crashes:** Ensure all drivers are up to date. Monitor system temperatures using MSI Center. Reduce overclocking settings if applied.
- **Network Connectivity Issues:** For wired connections, check the Ethernet cable and router. For Wi-Fi, ensure antennas are connected and Wi-Fi is enabled in Windows. Restart your router/modem.
- **Poor Performance:** Close unnecessary background applications. Ensure the system is not overheating. Update graphics drivers. Verify sufficient free storage space.

For more detailed troubleshooting or persistent issues, please visit the official MSI support website or

contact MSI customer service.

SPECIFICATIONS

The following table outlines the key specifications of the MSI Codex Z2 Gaming Desktop (Model A8NVP-436US):

Feature	Specification
Processor	AMD Ryzen R7-8700F (4.1 GHz)
Graphics Card	NVIDIA GeForce RTX 5070 (12 GB GDDR6)
RAM	32GB DDR5
Storage	2TB m.2 NVMe SSD
Operating System	Windows 11 Home
Wireless Connectivity	802.11ax (Wi-Fi 6E), Bluetooth
USB 2.0 Ports	4
USB 3.0/3.2 Ports	6 (various Gen 1/2, Type-A/C)
Max Screen Resolution	5120 x 2880
Item Weight	21.3 pounds
Product Dimensions (LxWxH)	16 x 8.38 x 19 inches



- 1. USB 2.0
- 2. P/S2
- 3. USB 3.2 Gen 2 10Gbps (Type-A)
- 4. LAN port
- 5. USB 3.2 Gen 2 10Gbps (Type-C)
- 6. USB 3.2 Gen 1 5Gbps (Type-A)
- 7. Wi-Fi / Bluetooth
- 8. Audio connectors
- 9. HDMI™ -out (2.1)
- 10. DP-out (1.4a)

Image: The AMD Ryzen R7-8700F processor, designed for high-performance gaming.

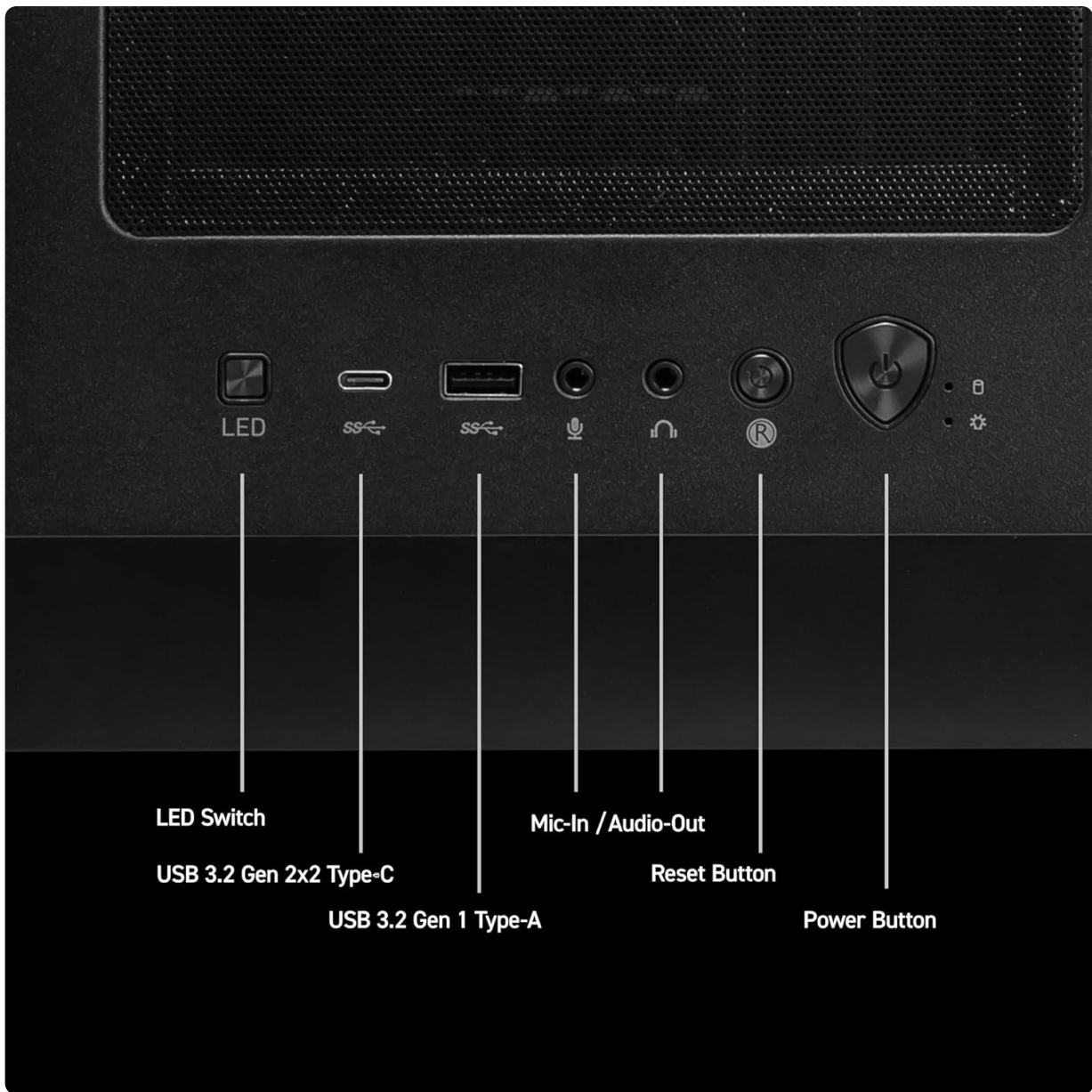


Image: NVIDIA RTX 50 Series graphics, featuring specialized AI Tensor Cores for enhanced creativity and gaming performance.

WARRANTY AND SUPPORT

Your MSI Codex Z2 Gaming Desktop comes with a standard manufacturer's warranty. Please refer to the warranty card included in your product packaging for specific terms and conditions, including warranty duration and coverage details.

For technical support, driver downloads, FAQs, and further assistance, please visit the official MSI support website:

[MSI Official Support Website](#)

You may also contact MSI customer service directly for personalized support.