

Manuals+

[Q & A](#) | [Deep Search](#) | [Upload](#)

manuals.plus /

- › [LG](#) /
- › [LG 32GX870A-B 32-inch Ultragear OLED Gaming Monitor User Manual](#)

LG 32GX870A-B

LG 32GX870A-B 32-inch Ultragear OLED Gaming Monitor User Manual

Model: 32GX870A-B

INTRODUCTION

This manual provides detailed instructions for the setup, operation, maintenance, and troubleshooting of your LG 32GX870A-B 32-inch Ultragear OLED Gaming Monitor. Please read this manual thoroughly before using the product to ensure proper and safe operation.



Front view of the LG 32GX870A-B Ultragear OLED Gaming Monitor, showcasing its sleek design and vibrant display.

SETUP

1. Package Contents

Verify that all items are present in the package:

- Monitor
- Power Cable
- HDMI Cable
- Display Port Cable
- USB-C Cable

2. Assembly

The monitor stand is designed for tool-less assembly. Carefully attach the stand base to the stand neck, then secure the assembled stand to the monitor panel. Ensure all connections are firm.



Rear view of the monitor showing the attached stand, which allows for height, tilt, swivel, and pivot adjustments.

3. Connecting to a Computer

Connect the monitor to your computer using one of the provided cables:

- **DisplayPort 2.1:** For optimal performance, especially for 4K UHD at 240Hz or Full HD at 480Hz. Requires a graphics card that supports DisplayPort 2.1.
- **HDMI:** Supports high refresh rates and resolutions.
- **USB Type-C:** For video, data, and power delivery (if supported by your device).

Connect the power cable to the monitor and a power outlet. Press the power button to turn on the monitor.



Best Monitor Brand



Detailed view of the monitor's rear ports, including HDMI, DisplayPort, USB-C, and USB 3.0 connections.

OPERATING THE MONITOR

1. Dual Mode Functionality

The LG 32GX870A-B features a Dual Mode refresh rate, allowing you to switch between two display configurations:

- **4K UHD (3840 x 2160) at up to 240Hz:** Ideal for high-resolution, graphically intensive content.
- **Full HD (1920 x 1080) at up to 480Hz:** Optimized for fast-paced competitive gaming where higher frame rates are critical.

Switch between these modes using the dedicated hotkey or through the monitor's On-Screen Display (OSD) menu.

LG UltraGear™ OLED

Dual Mode

Stunning 4K UHD 240Hz faster Full HD 480Hz



**240Hz
4KUHD**



**480Hz
FHD**

*Actual refresh rates may vary depending on computer graphics specifications and configurations.

Illustration demonstrating the Dual Mode feature, showing a 4K UHD 240Hz display alongside a Full HD 480Hz display.

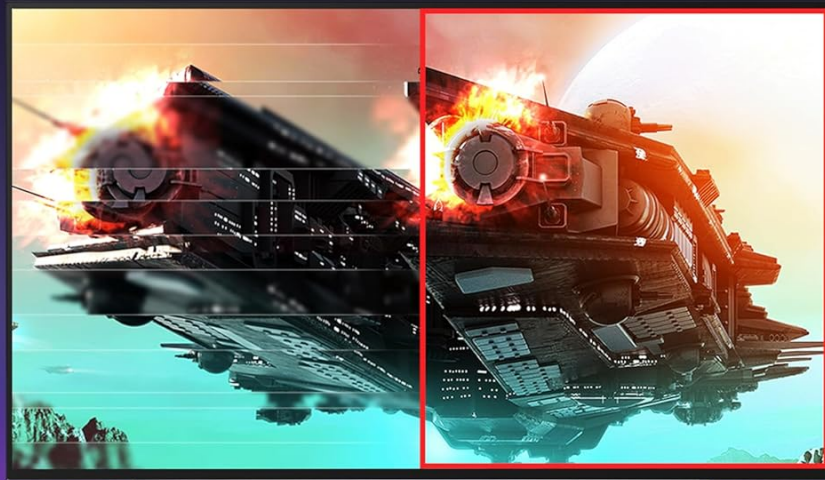
2. Response Time and Adaptive Sync

Experience minimal motion blur and ghosting with a 0.03ms Gray-to-Gray (GtG) response time. The monitor is NVIDIA G-SYNC Compatible and supports AMD FreeSync Premium Pro, ensuring smooth, tear-free gameplay by synchronizing the monitor's refresh rate with your GPU's frame rate.

LG UltraGear™ OLED

FreeSync Premium Pro & G-SYNC Compatibility

Seamless frame sync for stutter-free gaming



 NVIDIA
G-SYNC

 VESA CERTIFIED
AdaptiveSync

 AMD
FreeSync
Premium Pro

Logos indicating FreeSync Premium Pro and G-SYNC Compatibility, highlighting the monitor's adaptive sync capabilities.

3. Display Quality

The OLED panel with Micro Lens Array+ (MLA+) technology delivers a typical brightness of 275 nits and a peak brightness of up to 1300 nits. It is VESA DisplayHDR True Black 400 certified, providing deep blacks, vibrant colors, and a 1.5M:1 contrast ratio. The anti-glare/low reflection coating minimizes distractions from ambient light.

LG UltraGear™ OLED

Stunning OLED Picture

Up to 98.5% DCI-P3, 1.5M:1 Contrast Ratio,
HDR TrueBlack 400



VESA CERTIFIED

DisplayHDR™

TRUE
BLACK
400



DCI-P3 98.5%

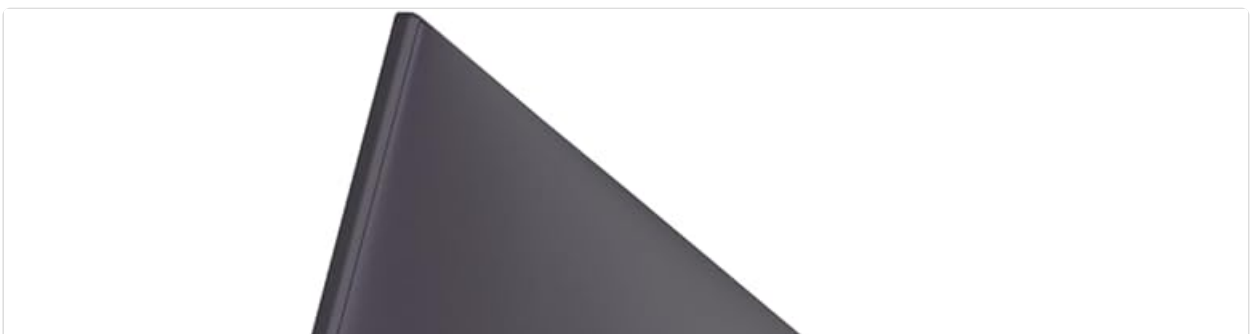


Visual representation of the monitor's stunning OLED picture quality, featuring DCI-P3 98.5% color gamut, 1.5M:1 contrast ratio, and HDR True Black 400.

4. Ergonomic Adjustments

The monitor stand allows for various adjustments to optimize your viewing experience:

- **Height Adjustment:** Raise or lower the display.
- **Tilt Adjustment:** Adjust the vertical angle of the screen.
- **Swivel Adjustment:** Rotate the screen horizontally.
- **Pivot Adjustment:** Rotate the screen to portrait or landscape orientation.





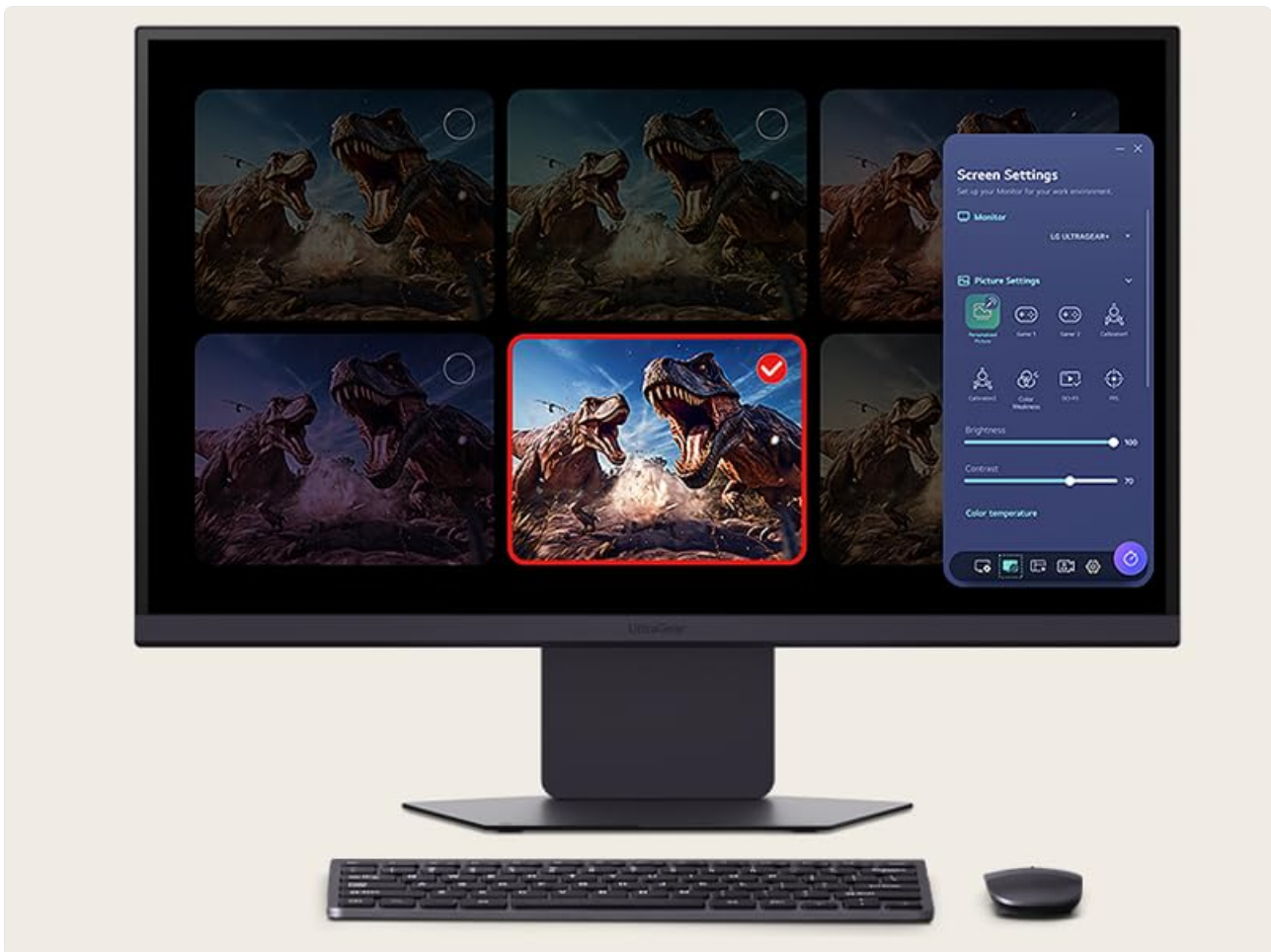
The monitor shown with its adjustable stand, demonstrating its ergonomic flexibility.

5. Audio Features

The monitor includes built-in speakers for integrated audio. For a more immersive experience, connect headphones to the 4-pole headphone jack, which supports DTS Headphone:X for 3D audio.

6. LG Switch App

The LG Switch app allows for enhanced multitasking and display management. It enables screen splitting into multiple sections, custom display layouts, and quick access to video calls or webOS streaming features via hotkeys. Software installation is required and can be downloaded from LG.com support.



Screenshot of the LG Switch App interface displayed on the monitor, showing various screen settings and layout options.

MAINTENANCE

OLED Protection and Care

To maintain the performance and longevity of your OLED panel, utilize the built-in OLED Care tools. These tools include features like pixel cleaning, which helps prevent image retention and ensures a sharp display over time. Regular use of these features is recommended.

TROUBLESHOOTING

If you encounter issues with your monitor, refer to the following common solutions:

- **Flickering Issues:** If the screen flickers, try adjusting the Adaptive Sync settings in the monitor's OSD menu. Switching from 'Extended' to 'Basic' or 'Off' can resolve this.

- **DisplayPort Connectivity:** If you experience issues with non-native resolutions when using DisplayPort, consider using an HDMI 2.1 cable as an alternative. Ensure your graphics card drivers are up to date.
- **Monitor Not Turning On:** Verify that the power cable is securely connected to both the monitor and a working power outlet. If the issue persists, the power supply unit may require inspection.
- **Image Retention / Red Dots:** Utilize the OLED Care tools, such as pixel cleaning, available in the monitor's settings to address potential image retention or pixel anomalies.
- **Grainy/Static/Screen Door Effect:** This can sometimes be observed with the matte screen surface, particularly in dark environments when displaying static gray content. It is generally less noticeable during dynamic content or in well-lit rooms.

SPECIFICATIONS

Feature	Specification
Brand	LG
Model Number	32GX870A-B.AUS
Screen Size	31.5 Inches
Screen Resolution	3840x2160 (4K UHD)
Max Screen Resolution	3840 x 2160 Pixels
Refresh Rate (4K UHD)	Up to 240Hz
Refresh Rate (Full HD)	Up to 480Hz
Response Time	0.03ms (GtG)
Panel Type	OLED
Brightness (Typical)	275 nits
Peak Brightness	Up to 1300 nits
Contrast Ratio	1.5M:1
HDR Support	VESA DisplayHDR True Black 400
Color Gamut	DCI-P3 98.5%
Adaptive Sync	NVIDIA G-SYNC Compatible, AMD FreeSync Premium Pro
Connectivity	2x HDMI, 1x DisplayPort 2.1, 1x USB Type-C, 2x USB 3.0, 1x Headphone Jack
Item Weight	21.6 pounds
Product Dimensions	9.83 x 28.11 x 24.44 inches (LxWxH)
Color	Black

WARRANTY AND SUPPORT

Warranty Information

The LG 32GX870A-B monitor comes with a 2-year limited warranty, which covers key components, including the OLED panel. For complete warranty details, please refer to the official LG website or the warranty card included with your product.

Customer Support

For further assistance, technical support, or to download the latest software and drivers, please visit the official LG support website: [LG.com/support](https://www.lg.com/support).