

[Manuals.plus](#) /

› [Otcboimo](#) /

› Tuya 4CH Wireless Smart Switch User Manual

## Otcboimo 4CH Wireless Smart Switch

# Otcboimo 4CH Wireless Smart Switch User Manual

Model: 4CH Wireless Smart Switch

Brand: Otcboimo

## 1. PRODUCT OVERVIEW

---

The Otcboimo 4CH Wireless Smart Switch is a versatile DIN rail mount DIY module designed to integrate traditional household appliances into a smart home automation system. It allows for remote control, timing functions, and voice control compatibility with popular smart assistants.



Front view of the Otcoimo 4CH Wireless Smart Switch, showing its compact design and labeling.

## 2. WHAT'S IN THE BOX

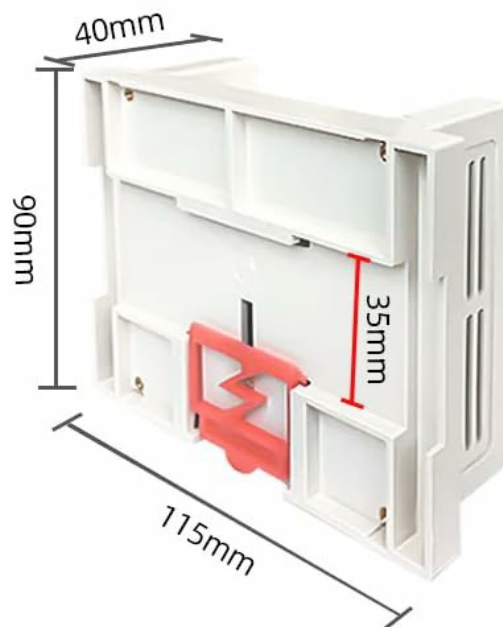
- 1 x Otcoimo 4CH WiFi Switch
- 1 x User Guide

## 3. SPECIFICATIONS

Parameter	Value
Voltage	AC90-250V 50/60Hz
Current	10A/gang, 16A/Total
Size (L x W x H)	115 x 90 x 40 mm (4.33 x 3.54 x 1.58 inches)

WIFI Frequency	2.4G. IEEE 802.11 b/g/n
Security Mechanism	WPA-PSK/WPA2-PSK
APP Compatibility	Tuya or Smart Life
Operating Voltage	120 Volts
Operation Mode	ON-OFF
Contact Type	Normally Open
Material	Aluminum (Contact Material), ABS (Housing)

## Parameters



### APP: Tuya / Smart Life

Input voltage: AC 85V-250V      MaxCurrent: 2200W/10A Gang

Total Power: 250V AC16A      Working temperature: -20-70°C

Working humidity: ≤80%      Size:115\*90\*40mm

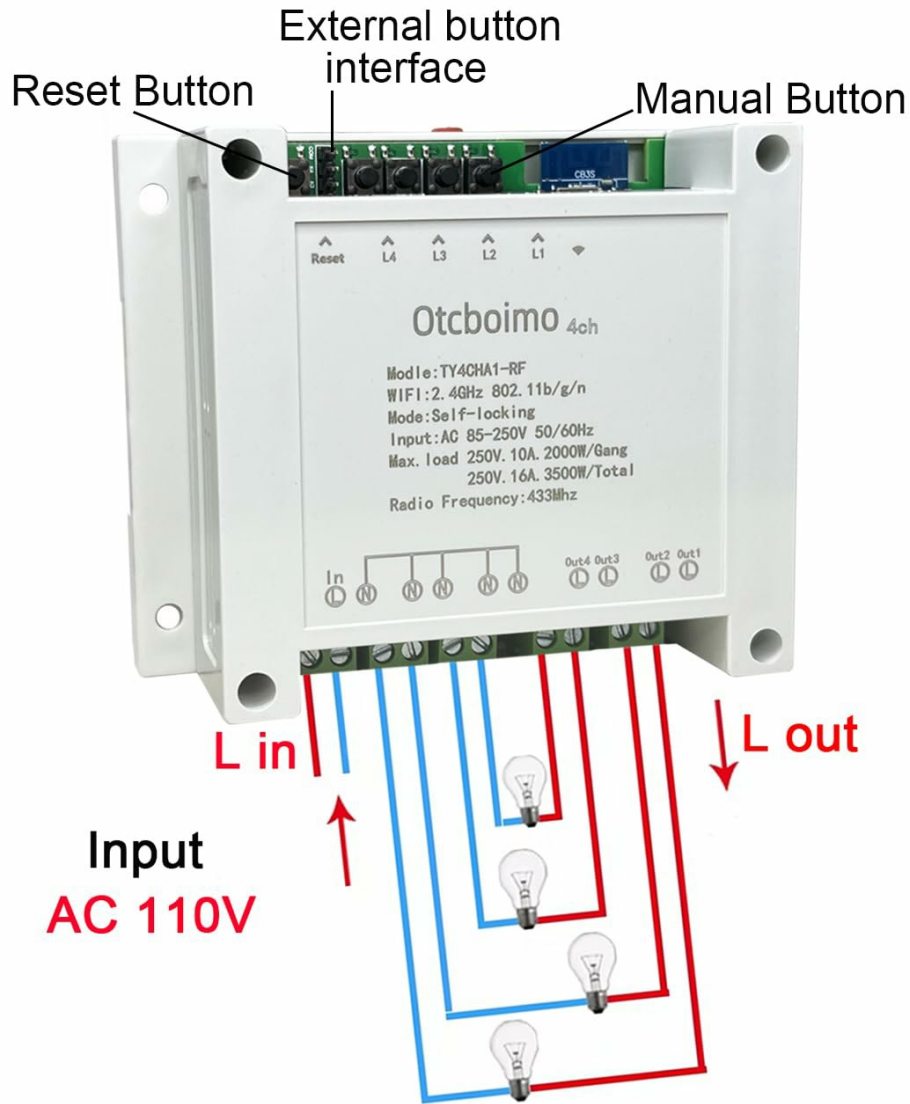
Wi-Fi Standard: Wi-Fi 2.4ghz b/g/n+Bluetooth      Material: ABS

*Detailed dimensions and technical parameters of the smart switch.*

## 4. SETUP AND INSTALLATION

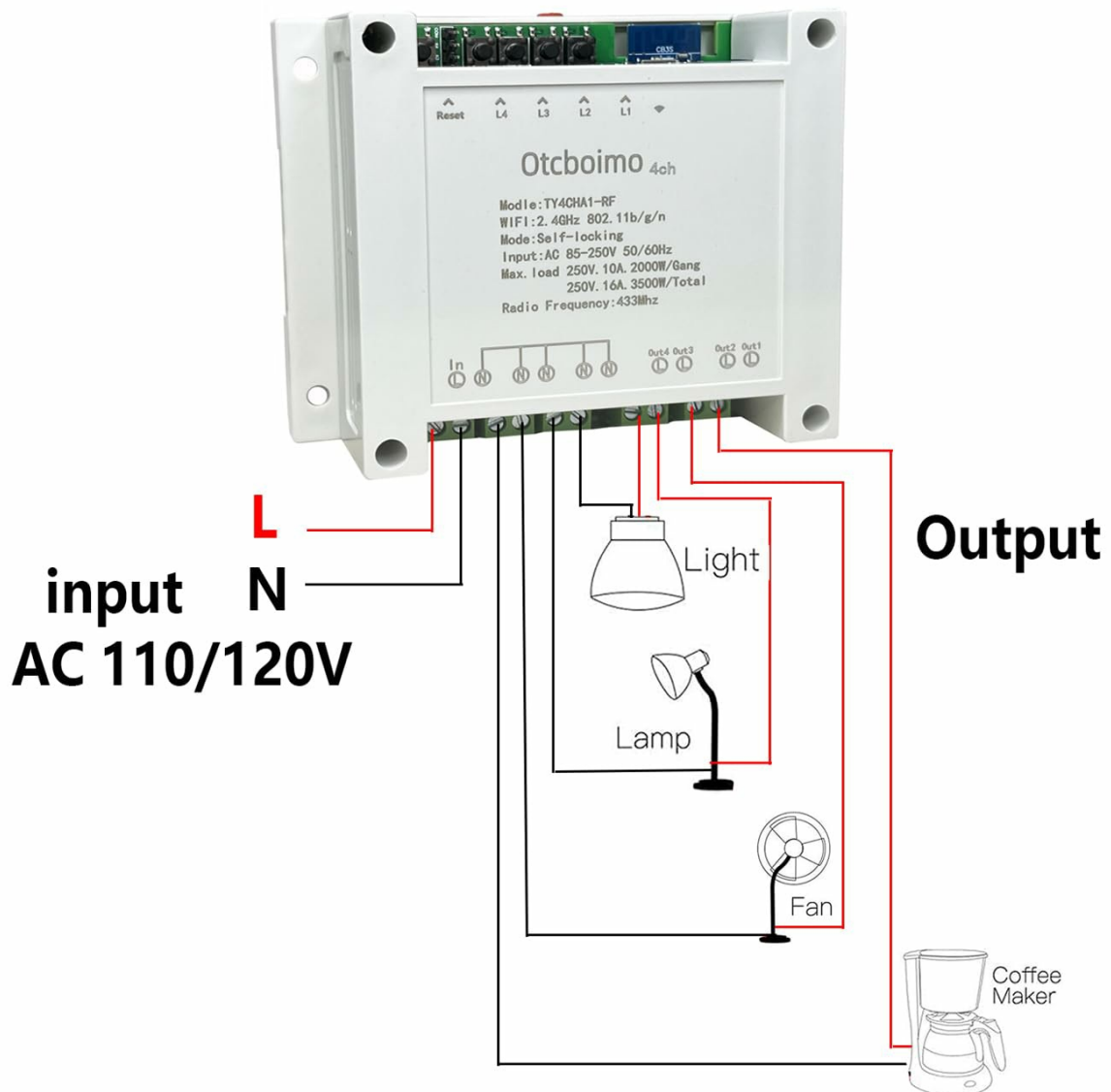
### 4.1 Wiring Diagram

Connect the smart switch in series with the appliance's circuit. The device features an AC 110V input and four independent outputs (Out1, Out2, Out3, Out4) for controlling various appliances. Ensure all connections are secure before powering on the device.



Wiring diagram illustrating the input (L in) and four independent outputs (L out) for connecting appliances.

# Wide Range of Appliances



*Examples of various household appliances such as lights, lamps, fans, and coffee makers connected to the smart switch outputs.*

## 4.2 Physical Installation

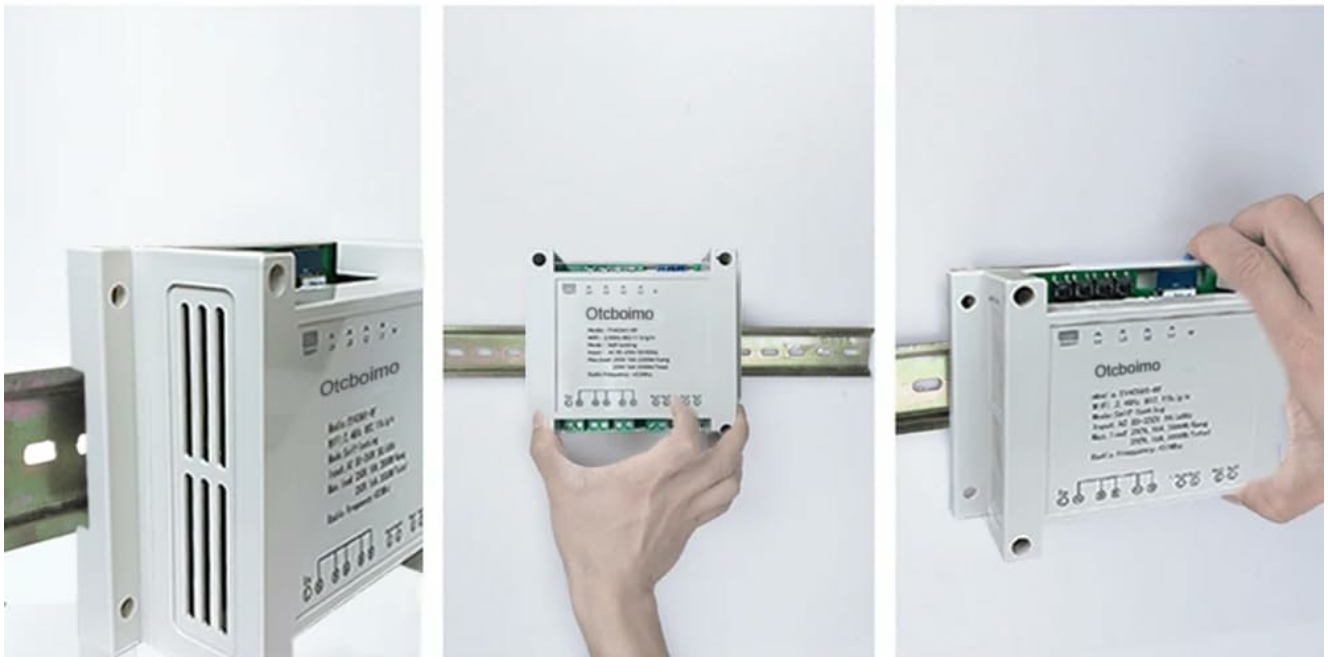
The smart switch supports both DIN rail installation and screw installation. For DIN rail mounting, follow these steps:

1. Install the switch into the guide rail.
2. Slide it to the right place along the rail.
3. Press the mounting brackets until they click into place, securing the device.

The device also has four holes for direct screw mounting if a DIN rail is not used.

# Easy to install

Supports rail installation, making installation more convenient.  
The device has 4 holes and supports screw installation



1. Install the switch into the guide rail
2. Slide it to the right place
3. Press the mounting brackets until they click in to place

*Visual guide for installing the smart switch onto a DIN rail.*

## 5. OPERATING INSTRUCTIONS

### 5.1 Smart Life / Tuya APP Remote Control

The smart switch can be controlled remotely using the Tuya or Smart Life app on your Android or iOS smartphone. This allows you to turn connected devices on or off from anywhere.

- Download the Tuya or Smart Life app from your device's app store.
- Register or log in to your account.
- Add the device by following the in-app instructions. The device is automatically identified when adding, simplifying the process.
- Once added, you can control each of the four channels independently.

### 5.2 Timing Function

Set schedules, countdowns, or loop timers for each connected device through the app. This allows for automated

control based on your daily habits, such as turning lights on at dusk or off at dawn.

# Timing Function

You can set the time to turn on the lights and turn on the fans in the office



*Screenshot demonstrating the timing function interface within the Smart Life/Tuya app.*

## 5.3 Voice Control

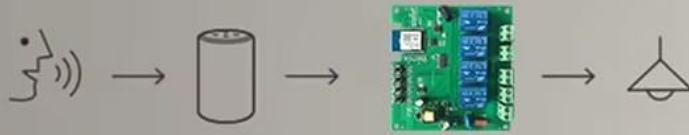
The smart switch is compatible with Amazon Alexa, Google Home/Nest, IFTTT, and SmartThings. Once integrated, you can use voice commands to control your connected appliances.

- Ensure your smart switch is connected to the Tuya/Smart Life app.
- Link your Tuya/Smart Life account to your preferred voice assistant (e.g., Alexa or Google Home) through their respective apps.
- Use voice commands such as "Alexa, turn on the light" or "Hey Google, turn off the fan."



## Simple Voice Control

Speak to Alexa and it will perform your command



*Illustration of voice control functionality with Amazon Alexa and Google Home.*

## 6. MAINTENANCE

The Otcboimo 4CH Wireless Smart Switch requires minimal maintenance. Keep the device clean and dry. Avoid exposing it to extreme temperatures or humidity. Do not attempt to open or repair the device yourself, as this may void any potential warranty and poses a safety risk.

## 7. TROUBLESHOOTING

- **Device not connecting to Wi-Fi:** Ensure your Wi-Fi network is 2.4GHz. If you have a dual-band router that merges 2.4GHz and 5GHz under one SSID, please separate them into two different Wi-Fi networks for compatibility. Check that the Wi-Fi signal strength is adequate where the switch is installed.
- **Appliance not responding:** Verify that the smart switch is properly wired to the appliance and that the appliance itself is functioning correctly. Check the status in the Tuya/Smart Life app.
- **Voice control not working:** Confirm that your Tuya/Smart Life account is correctly linked to your voice

assistant (Alexa, Google Home). Ensure your voice assistant device is online and properly configured.

- **Device unresponsive:** Try power cycling the smart switch by disconnecting it from power for a few seconds and then reconnecting. If issues persist, perform a factory reset (refer to the device's reset button, typically a small button labeled 'Reset' on the unit).

## 8. WARRANTY AND SUPPORT

---

Specific warranty information is not provided in this manual. For warranty details, technical support, or further assistance, please contact Otcoimo customer support through the retailer where the product was purchased or refer to the manufacturer's official website.

---