

Manuals+

[Q & A](#) | [Deep Search](#) | [Upload](#)

[manuals.plus](#) /

› [Shunwige](#) /

› [Shunwige YD03 AI Translator Earbuds User Manual](#)

Shunwige YD03

Shunwige YD03 AI Translator Earbuds User Manual

Model: YD03 | Brand: Shunwige

1. INTRODUCTION

The Shunwige YD03 AI Translator Earbuds are designed to facilitate seamless communication across language barriers. These earbuds offer real-time, two-way translation in up to 144 languages, making them ideal for travel, business, education, and daily interactions. They also function as standard Bluetooth earbuds for music playback and phone calls, providing a versatile audio solution.

Equipped with Bluetooth 5.4, the YD03 earbuds ensure stable connectivity with a wide range of devices, including iOS, Android, and Windows systems. This manual provides detailed instructions on setting up, operating, maintaining, and troubleshooting your YD03 earbuds to ensure optimal performance.

2. WHAT'S IN THE BOX

- Shunwige YD03 AI Translator Earbuds (Left and Right)
- Wireless Charging Case
- User Manual



Figure 2.1: Shunwige YD03 AI Translator Earbuds and their charging case.

3. PRODUCT OVERVIEW

The YD03 earbuds feature a compact, in-ear design for comfortable wear. The accompanying charging case not only protects and charges the earbuds but also features a digital display indicating battery levels for both earbuds and the case itself. The earbuds are controlled via intuitive touch gestures.

Overcome Language Barrier

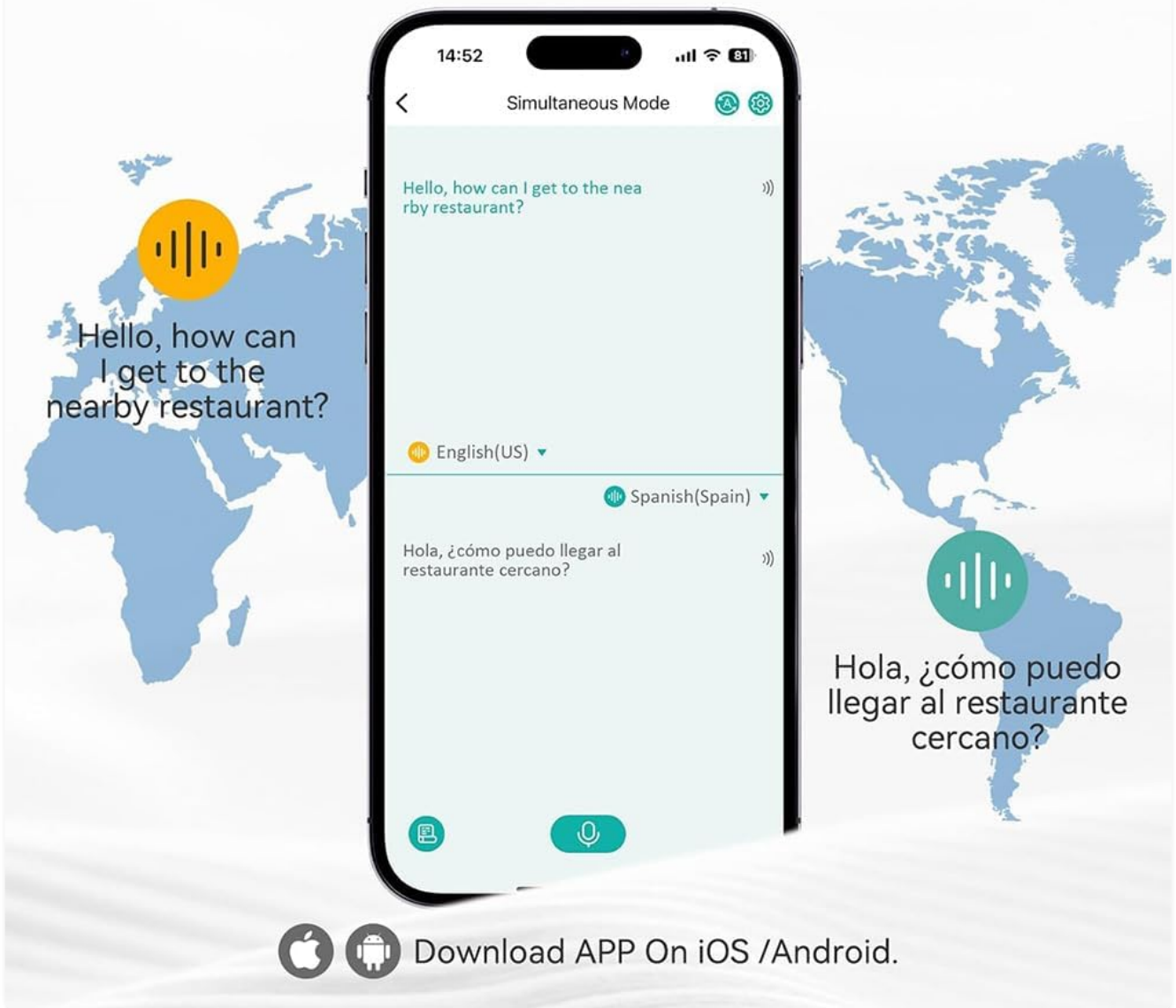


Figure 3.1: Dimensions of the YD03 earbuds and charging case. The case measures approximately 7.98 cm (3.14 inches) in width and 5.49 cm (2.16 inches) in height, with a thickness of 3.0 cm (1.18 inches).

4. SETUP

4.1 App Installation

To utilize the translation features, you must download the dedicated companion application. This application is compatible with both Android and iOS devices.

1. Scan the QR code provided in the physical user manual or search for the official application in your device's app store (Google Play Store for Android, Apple App Store for iOS).
2. Install the application on your smartphone or tablet.
3. Open the application and follow the on-screen prompts to create an account or log in.

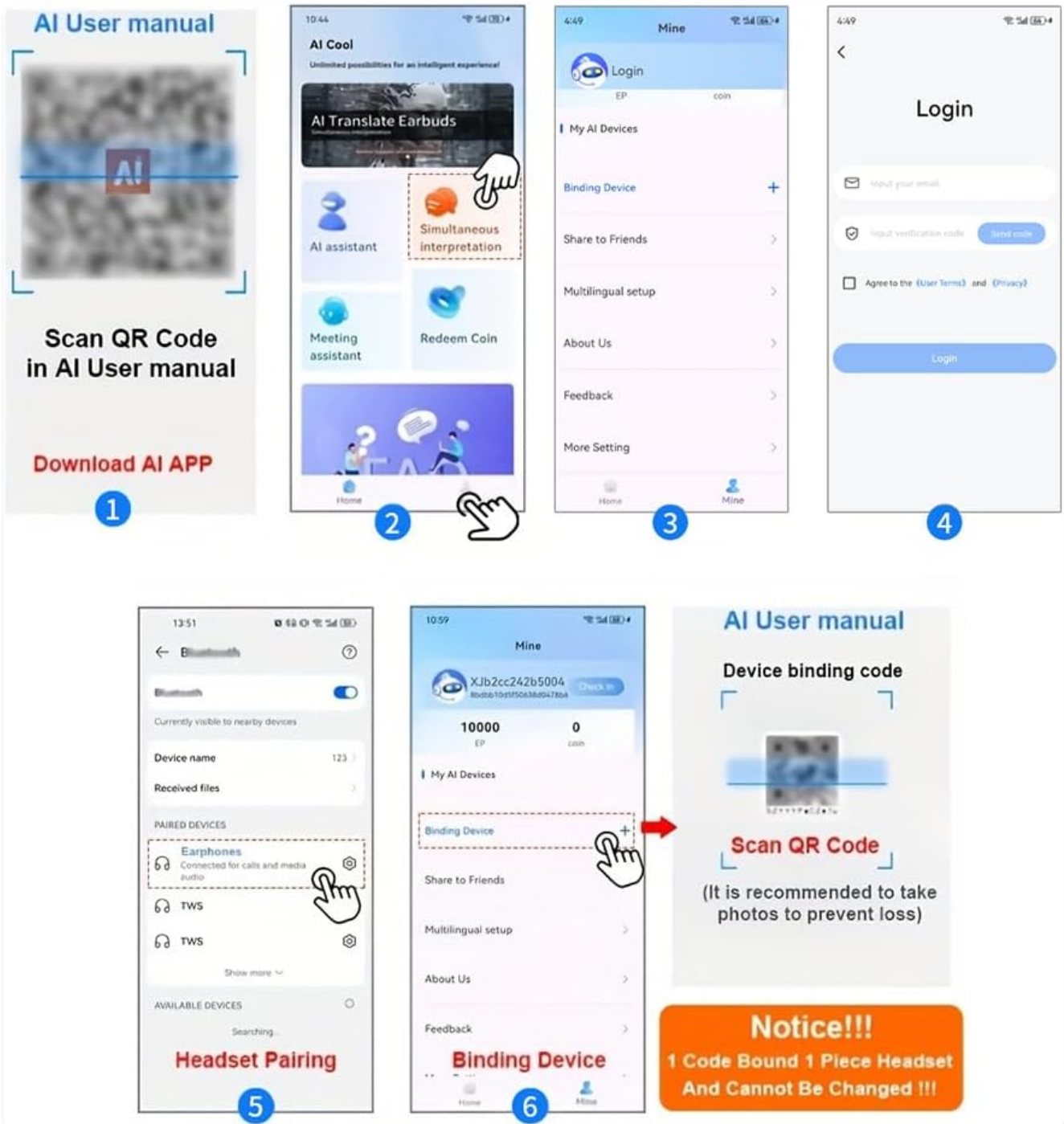


Figure 4.1: Visual guide for app installation and initial setup, including scanning a QR code for the AI APP and login process.

4.2 Earbud Pairing

The YD03 earbuds are designed for quick and easy pairing with your device.

1. **Instant Pairing:** Open the charging case. The earbuds will automatically enter pairing mode, and your device's Bluetooth will trigger a pairing request.
2. **Confirm Connection:** On your smartphone or tablet, tap to confirm the pairing request for an instant connection.
3. **Activate Translation:** Once paired, open the companion application. Log in and select "Translation Mode." The earbuds will automatically sync and be ready for translation.

Enjoy Crystal-Clear Sound Anytime and Anywhere

Automatically connects to your phone when you turn it on,
you'll experience crisp, clear sound right away

- 3-in-1 translation headphones**
- High-performance CPU for speed**
Accuracy 97% Fast Response 0.5s
- Lightweight and Portable**
Easily fit in your bag or pocket

Figure 4.2: The three-step process for smart connectivity and translation setup: Instant Pairing, Activate Translation, and Seamless Communication.

The earbuds are widely compatible with wireless devices such as smartphones, tablets, and laptops, supporting mainstream operating systems like Windows, iOS, and Android.

Widely Compatible

Compatible with wireless devices such as smartphones, tablets, and laptops, supporting mainstream systems such as Windows, iOS, and Android



Figure 4.3: The YD03 earbuds are compatible with various devices including smartphones, tablets, and laptops, supporting Windows, iOS, and Android operating systems.

5. OPERATING INSTRUCTIONS

5.1 Translation Modes

The YD03 earbuds offer multiple translation modes to suit different communication scenarios:

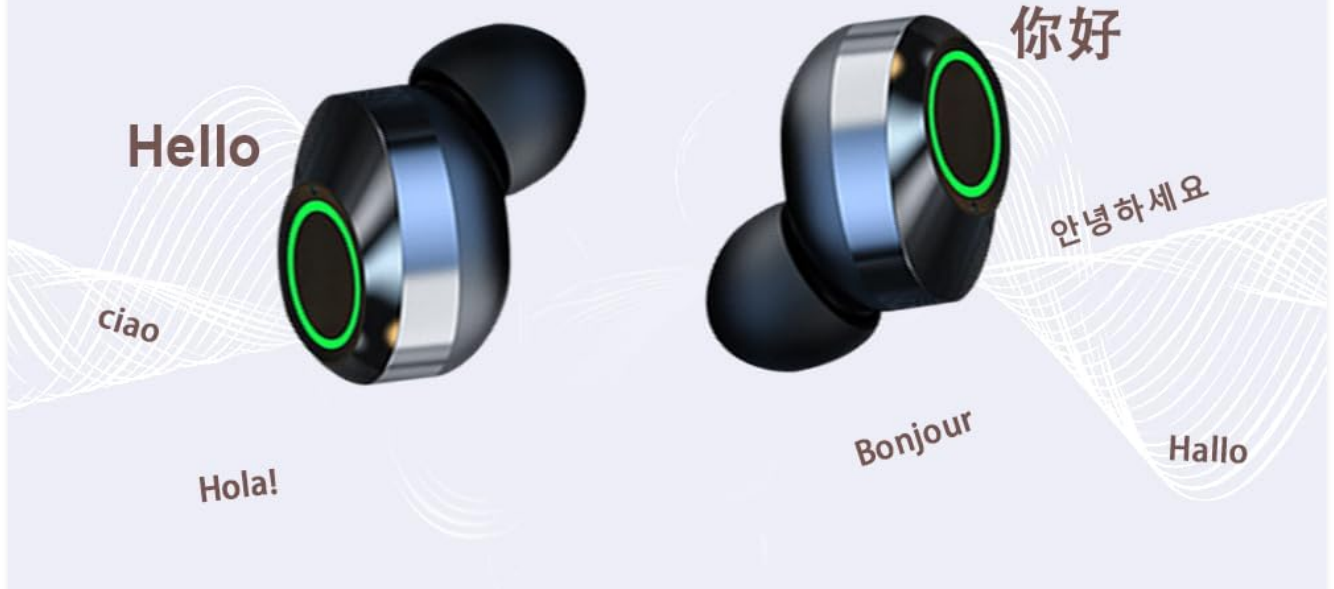
- **Free Conversation Mode:** Allows for natural, real-time two-way translation during conversations.
- **Speech-to-Text Mode:** Converts spoken language into text, which can then be translated and displayed.
- **Photo Translation Mode:** Translate text from images by taking a photo through the app.

The earbuds boast a translation accuracy of up to 98% with a response time of 0.2 seconds, ensuring smooth and efficient communication.

98% Accuracy Simultaneous Translation in 0.2 Sec

98%
Accuracy

0.2S
Response



Thoughtful configuration, no need to worry about the Earbuds falling off

S

M

L

Figure 5.1: The YD03 earbuds offer 98% translation accuracy with a 0.2-second response time for simultaneous interpretation.

supports translation in over 144 languages

Unlimited anytime, anywhere



Figure 5.2: The companion app facilitates overcoming language barriers by displaying simultaneous translations on your mobile device.

The YD03 supports translation in over 144 languages, providing unlimited communication possibilities anytime, anywhere.

Smart Connectivity

3-Step Translation Setup

1

Instant Pairing:

Open the earbud case – Bluetooth automatically triggers a pairing request. Tap to confirm on your phone for instant connection.

2

Activate Translation:

Download the companion app (Android/iOS), log in, select "Translation Mode," and the earbuds will sync instantly to translation mode.

3

Seamless Communication:

Speak into the mic – the app translates and plays results through the paired earbuds. Easy to use in business meetings, travel navigation, or language learning!

Figure 5.3: The YD03 earbuds support translation in over 144 languages, represented by various national flags on a globe.

5.2 Music Playback and Calls

In addition to translation, the YD03 earbuds function as high-quality Bluetooth headphones for:

- **Music Playback:** Enjoy crystal-clear sound for your audio content.
- **Phone Calls:** Make and receive calls with integrated microphone functionality.

Control music playback (play, pause, skip tracks) and manage calls (answer, end) using the touch controls on the earbuds. Refer to the app or a detailed control diagram for specific touch gestures.

6. MAINTENANCE

6.1 Cleaning

- Gently wipe the earbuds and charging case with a soft, dry, lint-free cloth.
- Do not use abrasive cleaners, alcohol, or harsh chemicals.

- Ensure charging contacts on both earbuds and case are clean and free of debris.

6.2 Battery Care and Charging

To maximize battery life and performance:

- Charge the earbuds fully before first use.
- Store the earbuds in their charging case when not in use.
- Avoid exposing the device to extreme temperatures.
- The charging case has a large capacity and can also be used to charge your smartphone via a wired connection.

Configurer une connexion intelligente en trois étapes pour la traduction

1

Compatibilité immédiate :

Ouvrez le boîtier des écouteurs : Bluetooth déclenchera automatiquement une demande d'appariement. Appuyez sur votre téléphone pour confirmer la connexion instantanée.

2

Activer la traduction :

Téléchargez l'application complémentaire (Android / iOS), connectez-vous, sélectionnez "Mode de traduction" et le casque sera immédiatement synchronisé avec le mode de traduction.

3

Pas de problème de communication :

Parler au microphone: l'application traduit et lit le résultat via des écouteurs jumelés. Facile à utiliser lors de réunions d'affaires, de navigation de voyage ou d'apprentissage de la langue!

Figure 6.1: The YD03 charging compartment has a large capacity and can charge both the earbuds and a smartphone.

7. TROUBLESHOOTING

If you encounter issues with your Shunwise YD03 earbuds, please refer to the following common problems and solutions:

| Problem | Possible Cause | Solution |
|--|---|--|
| Earbuds do not pair with device. | Bluetooth is off; earbuds not in pairing mode; interference. | Ensure Bluetooth is enabled on your device. Place earbuds in case, close, then open to re-enter pairing mode. Move closer to your device. |
| Translation not heard through earbuds. | Incorrect audio output setting in app; earbuds not properly connected to app. | Check the companion app's settings to ensure audio output is directed to the earbuds. Reconnect earbuds within the app. Ensure earbuds are charged and paired. |

| Problem | Possible Cause | Solution |
|-------------------------------------|--|--|
| Poor translation accuracy or delay. | Weak internet connection; background noise; speaking too fast. | Ensure a stable internet connection. Speak clearly and at a moderate pace. Reduce background noise. |
| Earbuds not charging. | Charging contacts dirty; case battery low; faulty cable/charger. | Clean charging contacts on earbuds and case. Charge the charging case. Try a different charging cable and power adapter. |
| No sound from earbuds. | Volume too low; earbuds not connected; media paused. | Increase volume on your device. Ensure earbuds are connected. Check if media playback is paused. |

If the problem persists after trying these solutions, please contact customer support.

8. SPECIFICATIONS

| Feature | Detail |
|---------------------------|---|
| Model Name | YD03 |
| Connectivity Technology | Wireless (Bluetooth 5.4) |
| Frequency Range | 20 Hz - 20,000 Hz |
| Control Method | Touch |
| Compatible Devices | Smartphones, Tablets, Laptops (iOS, Android, Windows) |
| Translation Languages | 144+ |
| Translation Accuracy | Up to 98% |
| Translation Response Time | 0.2 seconds |
| Color | Black |
| Material | Plastic |
| Ear Placement | In-Ear |
| Form Factor | In-Ear |

9. WARRANTY AND SUPPORT

For warranty information, please refer to the documentation included with your purchase or contact the retailer. For technical support, troubleshooting assistance beyond this manual, or inquiries regarding replacement parts, please contact Shunwige customer service through their official website or the contact information provided with your product packaging.

