

SOVMIKU 2CB2

SOVMIKU Vicohome 2CB2 2K AI Tracking Security Camera User Manual

Model: 2CB2

1. INTRODUCTION

This manual provides detailed instructions for the installation, operation, and maintenance of your SOVMIKU Vicohome 2CB2 2K AI Tracking Security Camera. Please read this manual thoroughly before using the product to ensure proper functionality and safety. This camera is designed for indoor use, offering advanced monitoring capabilities for your home, pets, or as a baby monitor.

2. PRODUCT OVERVIEW

2.1 What's in the Box

- SOVMIKU Vicohome 2CB2 Camera
- Instruction Manual
- Power Adapter (Corded Electric)
- Mounting Accessories (Screws, Wall Plugs)

2.2 Key Features

- **2K (3MP) Video Resolution:** Provides clear and detailed video footage.
- **AI Tracking:** Automatically detects and tracks movement within its field of view.
- **Dual-Band Wi-Fi Connectivity:** Supports both 2.4GHz and 5GHz Wi-Fi networks for flexible connection options.
- **360° View:** Features Pan 355° and Tilt 90° for comprehensive room coverage.
- **Two-Way Audio:** Allows for real-time communication through the camera.
- **Night Vision:** Infrared night vision with a range of up to 32 feet (10 meters) for clear monitoring in low-light conditions.
- **Emergency SOS Function:** One-touch call feature for immediate contact in emergencies.
- **Motion Detection & Audible Alarm:** Real-time motion detection with optional audible alarm

activation.

- **Local Storage:** Supports Micro SD cards up to 128GB (card not included) for local recording.
- **Cloud Storage:** Optional encrypted cloud storage services available.
- **Privacy Mode:** Allows the camera lens to be physically hidden when monitoring is not desired.
- **Multi-Device & Multi-User Support:** Connect up to 50 cameras to one app and share access with up to 10 users.
- **Multiple Mounting Options:** Suitable for desktop, ceiling, or wall mounting.

2.3 Camera Components



Image: Front view of two SOVMIKU Vicohome 2CB2 security cameras.

Local or Cloud? You're the Boss!

Built-in microSD Slot, Support up to 128GB

128GB = 15 months motion detection recordings

**microSD card not included*

Prefer Encrypted cloud storage? We've got that too.

Nobody can destroy your recordings, Even if the camera is destroyed



Image: Close-up of the camera highlighting the microSD card slot and cloud storage option.

3. SETUP

3.1 App Download and Installation

The SOVMIKU Vicohome 2CB2 camera operates with the "Vicohome" application. Download the free "Vicohome" App from the Google Play Store (for Android devices) or the Apple App Store (for iOS devices).



Image: Vicohome App interface on a smartphone.

3.2 Powering the Camera

1. Connect the provided power adapter to the camera's Type-C power port.
2. Plug the power adapter into a standard electrical outlet.
3. The camera will power on and initiate its startup sequence.

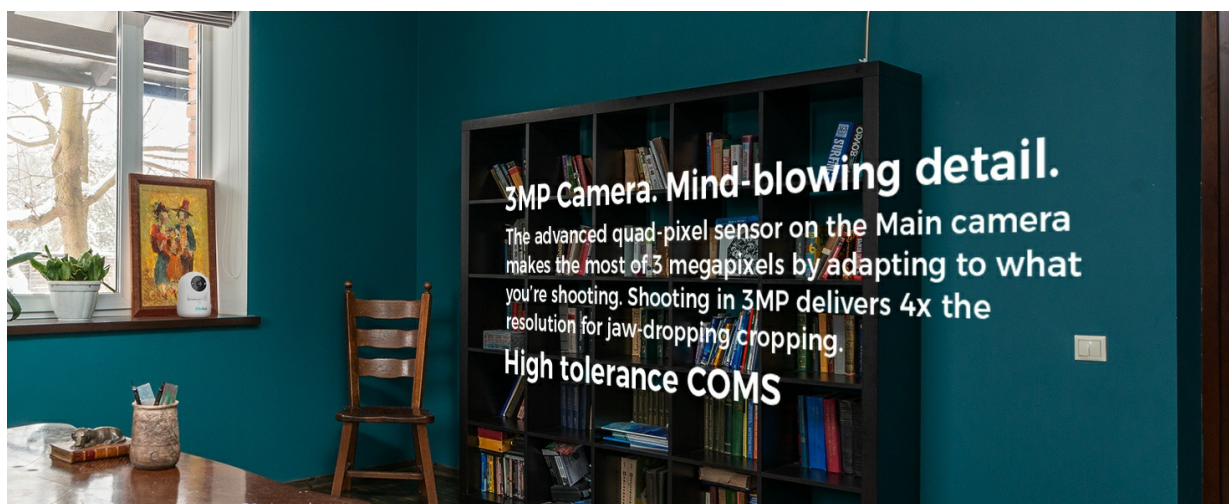


Image: Camera connected via Type-C power cable.

3.3 Network Connection

The camera supports dual-band Wi-Fi (2.4GHz and 5GHz). Ensure your Wi-Fi network is active and within range.



Image: Camera illustrating dual-band Wi-Fi compatibility.

3.4 Mounting the Camera

The camera can be placed on a desktop or mounted on a wall or ceiling. The mounting bracket is designed for easy installation.

1. **Desktop Placement:** Simply place the camera on a flat, stable surface.
2. **Wall/Ceiling Mount:**
 - Separate the mounting base from the camera unit.
 - Secure the mounting base to the desired location using the provided screws and wall plugs.
 - Clip the camera unit into the secured mounting base.



Image: Various mounting options for the camera.

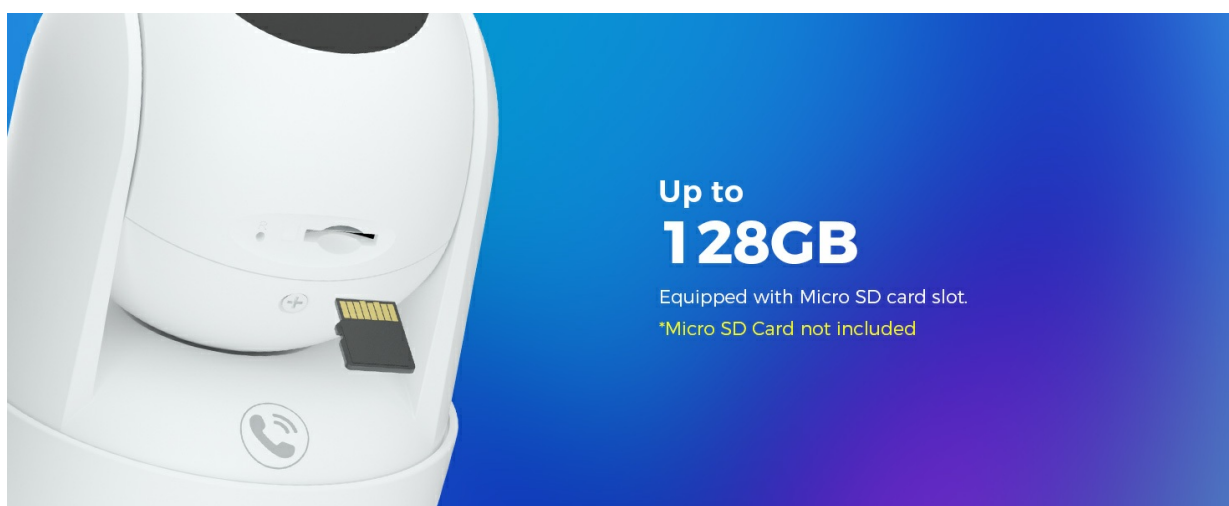


Image: Detachable mounting bracket for wall/ceiling installation.

4. OPERATING INSTRUCTIONS

4.1 Live View and Remote Access

Once connected to the internet via the Vicohome App, you can view real-time footage from your camera

from anywhere in the world. The app allows you to monitor multiple cameras simultaneously.



Image: Viewing multiple cameras simultaneously via the app.

4.2 Pan, Tilt, and Zoom

Use the controls within the Vicohome App to remotely pan (rotate horizontally) the camera 355° and tilt (rotate vertically) it 90° to adjust the viewing angle. The camera also supports digital zoom.



Image: Setting and accessing frequently used camera positions.

4.3 Two-Way Audio

The camera features a built-in microphone and speaker, enabling two-way communication. Use the app to listen to the environment around the camera and speak through the camera's speaker.



Image: Demonstrating two-way audio communication.

4.4 Night Vision

The camera automatically switches to infrared night vision in low-light conditions, providing clear black and white video up to 32 feet. This feature is particularly useful for monitoring babies without disturbing their sleep.

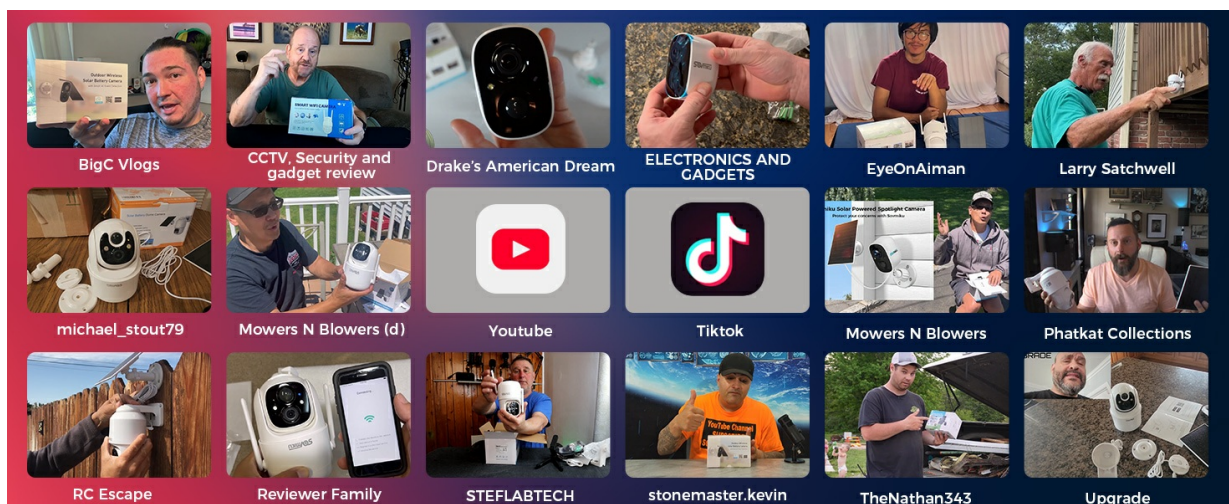


Image: Night vision view of a baby monitor.

4.5 Motion Detection and AI Tracking

The camera can detect motion in real-time. When motion is detected, the camera can automatically track the moving object and send alerts to your phone. An audible alarm can also be activated via the app.



Image: Motion tracking in action.

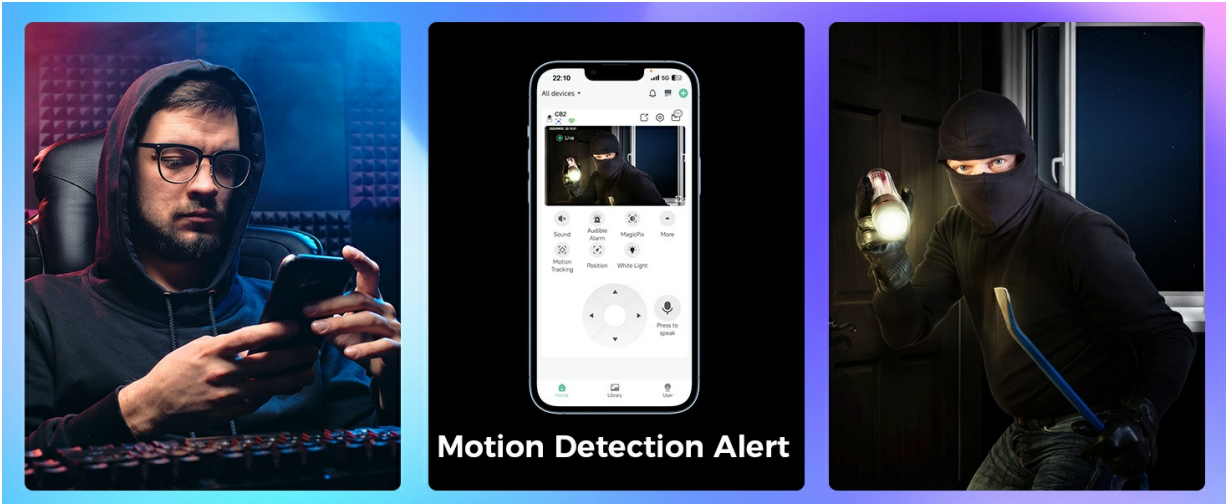


Image: Motion detection alert notification.



Audible Alarm

After Alarm Siren is turned on, the camera will automatically sound an alert when the motion sensor is triggered.

Image: Audible alarm activation upon motion detection.

4.6 Emergency SOS Call

The camera features a one-touch call function. In an emergency, a user near the camera can press a designated button to initiate a call to a pre-configured contact via the Vicohome App.

Emergency SOS via one-touch call

If you are concerned about elderly parents or young children who are unable to make phone calls in an emergency. The CB2 camera allows them to contact you immediately with just one click.



Image: Emergency SOS call feature.

4.7 Privacy Mode

To ensure privacy, the camera offers a privacy mode. When activated, the camera lens will physically rotate downwards, obscuring its view and preventing recording.

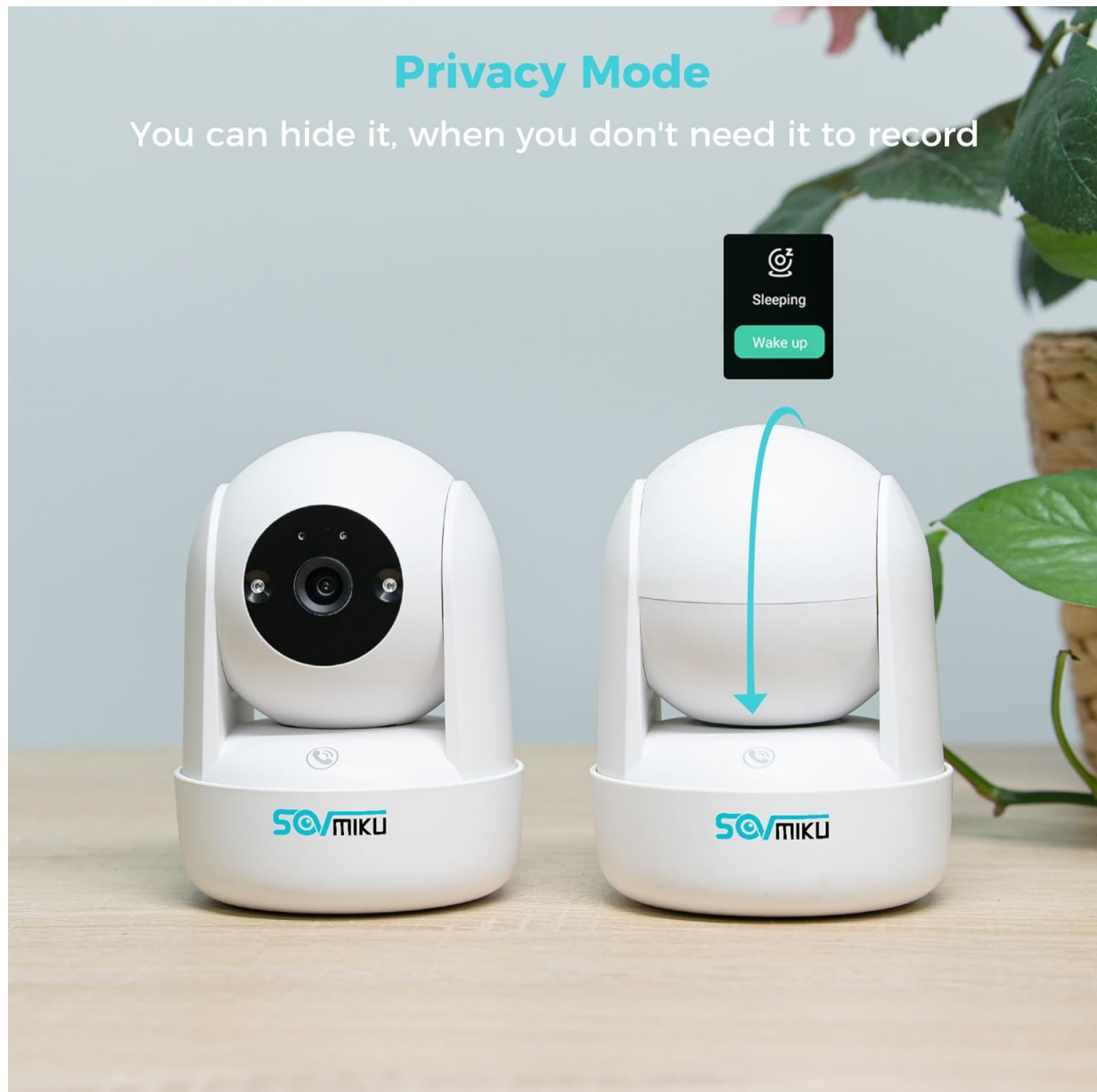


Image: Camera in normal and privacy mode.

4.8 Storage Options

The camera supports local storage via a Micro SD card (up to 128GB). Additionally, optional cloud storage services are available for secure, off-site recording.

Privacy. That's Sovmiku

Privacy is a fundamental human right. It's also one of our core values. Which is why we design our products and services to protect it. That's the kind of innovation we believe in.

Sovmiku complies with basic laws in the United States, and for customer information, Sovmiku can only be used to serve the customer itself and will not engage in any other behavior that infringes on consumer rights.

5. MAINTENANCE

To ensure optimal performance and longevity of your SOVMIKU Vicohome 2CB2 camera, follow these maintenance guidelines:

- **Cleaning:** Gently wipe the camera lens and body with a soft, dry cloth. Avoid using harsh chemicals or abrasive materials that could scratch the lens or housing.
- **Placement:** Ensure the camera is placed in a stable location, away from direct sunlight, extreme temperatures, and high humidity.
- **Software Updates:** Regularly check the Vicohome App for firmware updates to ensure your camera has the latest features and security enhancements.
- **Power Supply:** Use only the provided power adapter to prevent damage to the camera.

6. TROUBLESHOOTING

If you encounter issues with your SOVMIKU Vicohome 2CB2 camera, refer to the following common problems and solutions:

Problem	Possible Cause	Solution
Camera offline/Cannot connect to Wi-Fi	Incorrect Wi-Fi password; Camera too far from router; Router issues; Incorrect Wi-Fi band selected.	Verify Wi-Fi password. Move camera closer to router. Restart router. Ensure camera is connecting to a compatible 2.4GHz or 5GHz network.
Poor video quality	Weak Wi-Fi signal; Dirty lens; Insufficient lighting.	Improve Wi-Fi signal strength. Clean the camera lens. Ensure adequate lighting for optimal image quality.
Motion detection not working	Motion detection disabled in app; Sensitivity too low; Camera in privacy mode.	Check app settings to ensure motion detection is enabled and sensitivity is appropriate. Disable privacy mode.
Two-way audio issues	Microphone/speaker muted in app; Network latency.	Ensure audio settings are enabled in the app. Check network connection for stability.
Camera not tracking movement	AI tracking disabled; Object moving too fast or too slow.	Enable AI tracking in the app settings. Ensure movement is within the camera's tracking capabilities.

7. SPECIFICATIONS

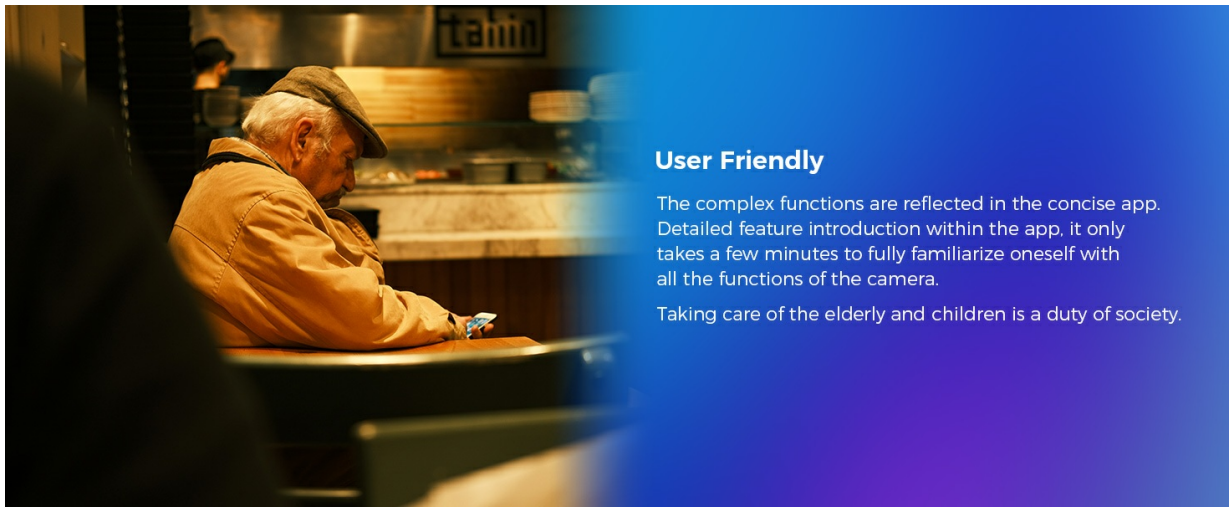
The following table outlines the technical specifications of the SOVMIKU Vicohome 2CB2 camera:



Image: Detailed technical specifications.

Feature	Detail
Indoor/Outdoor Usage	Indoor
Compatible Devices	Smartphone
Power Source	Corded Electric
Connectivity Protocol	Wi-Fi (2.4GHz/5GHz)
Controller Type	Vicohome App
Mounting Type	Surface Mount (Desktop, Wall, Ceiling)
Video Capture Resolution	3 MP (2K)
Night Vision Range	32 Feet
Material	PVC
Item Dimensions (L x W x H)	4.7 x 3.7 x 3.7 inches
Item Weight	1.48 pounds
Focus Type	Auto Focus
Zoom Type	Digital Zoom
Alert Type	Motion Only
Light Source Type	Infrared
Flash Memory Supported Size Maximum	128 GB (Micro SD)

7.1 Certifications



User Friendly

The complex functions are reflected in the concise app. Detailed feature introduction within the app, it only takes a few minutes to fully familiarize oneself with all the functions of the camera.

Taking care of the elderly and children is a duty of society.

Image: Product Certifications.

8. WARRANTY AND SUPPORT

8.1 Exchange Policy

SOVMIKU offers a 180-day exchange policy. If you are not satisfied with the product, you may submit an exchange request. The company aims to provide a resolution within 24 hours.



Image: 180-Day Exchange Policy steps.

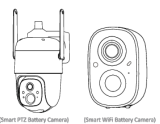
8.2 Customer Support

For any inquiries, technical assistance, or support, please contact SOVMIKU customer service. You can reach us via email at Sovmiku@163.com. We aim to respond to all inquiries within 12 hours.

Your feedback is valuable and helps us improve our products and services.

© 2025 SOVMIKU. All rights reserved.

Related Documents - 2CB2

<p>CS10-V1.0</p> <p>Smart Battery Powered Camera</p> <p>Operation Instruction</p>  <p>(Smart PTZ Battery Camera) (Smart WiFi Battery Camera)</p> <p>E-mail: Sovmiku@163.com (For US customer) E-mail: jason@hiseeu.com (For UK/EU customer)</p>	<p>Smart Battery Powered Camera Operation Instruction</p> <p>This document provides operation instructions for the Smart Battery Powered Camera, covering setup, installation, sharing, charging, indicator light status, firmware upgrades, and FAQs for both PTZ and WiFi models.</p>
--	---

