

QUICO HC410

QUICO HC410 Travel Hair Dryer User Manual

Model: HC410 | Brand: QUICO

1. IMPORTANT SAFETY INFORMATION

Please read all instructions before using this appliance. When using electrical appliances, especially when children are present, basic safety precautions should always be followed, including the following:

- Always unplug the hair dryer when not in use.
- Do not use the hair dryer while bathing or near water.
- Keep the hair dryer away from heated surfaces.
- Do not use this appliance near bathtubs, showers, basins or other vessels containing water.
- Do not immerse the appliance in water or any other liquid.
- Do not reach for an appliance that has fallen into water. Unplug it immediately.
- Close supervision is necessary when this appliance is used by, on, or near children or individuals with certain disabilities.
- Use this appliance only for its intended household use as described in this manual. Do not use attachments not recommended by the manufacturer.
- Never operate this appliance if it has a damaged cord or plug, if it is not working properly, or if it has been dropped or damaged, or dropped into water.
- Keep the cord away from heated surfaces. Do not pull, twist, or wrap cord around the appliance.
- Never block the air openings of the appliance or place it on a soft surface, such as a bed or couch, where the air openings may be blocked. Keep the air openings free of lint, hair, and the like.
- Never use while sleeping.
- Never drop or insert any object into any opening.
- Do not use outdoors or operate where aerosol (spray) products are being used or where oxygen is being administered.
- Do not use an extension cord with this appliance.

- Do not direct hot air towards eyes or other heat-sensitive areas.
- Attachments may be hot during use. Allow them to cool before handling.
- Do not place appliance on any surface while it is operating.
- While the appliance is in use, keep your hair away from the air inlets.
- Do not operate with a voltage converter. This product supports dual voltage (120V and 220-240V) automatically.

This hair dryer is equipped with a US UL-certified ALCI safety plug and built-in overheat protection that shuts off if too hot, ensuring safety during use.

2. PRODUCT OVERVIEW

The QUICO HC410 Travel Hair Dryer is designed for efficient and gentle hair drying, featuring advanced technology for healthy hair care. Its compact and foldable design makes it ideal for both home use and travel.

120000 RPM Brushless Motor
Save **70%** of your precious time for Drying!

Short Hair
1-2 Mins

Medium Length Hair
2-3 Mins

Long Hair
3-5 Mins

Image: The QUICO HC410 Travel Hair Dryer with its magnetic nozzle attached, showcasing its sleek design.

Key Features:

- **120,000 RPM Brushless Motor:** Provides powerful airflow for fast drying, up to 7 times faster than standard dryers.

- **500 Million Negative Ions:** Helps to eliminate static electricity, reduce frizz, and enhance hair shine and smoothness.
- **Intelligent Thermo-Control:** Measures temperature over 1,000 times per second to prevent heat damage.
- **Dual Voltage (120V/220-240V):** Automatic voltage adjustment for worldwide compatibility (requires appropriate plug adapter for non-US outlets).
- **Foldable and Lightweight Design:** Weighs approximately 1.0 lbs and measures 7 x 1.65 inches, making it highly portable.
- **3 Heat & 3 Speed Settings:** Customizable settings for various hair types and styling needs.
- **Magnetic Nozzle:** Directs airflow precisely and is easily attachable/detachable.
- **ALCI Safety Plug:** US UL-certified for enhanced safety.

3. SETUP

1. **Unboxing:** Carefully remove the hair dryer and all accessories from the packaging. Ensure all components are present: hair dryer unit, magnetic nozzle, and travel bag (if included).
2. **Inspect for Damage:** Before first use, inspect the hair dryer and its power cord for any signs of damage. Do not use if damaged.
3. **Attach Nozzle:** The magnetic nozzle can be easily attached to the front of the hair dryer. It can be rotated 360 degrees for optimal styling.



Image: A diagram illustrating the 360-degree rotating magnetic nozzle for precise airflow control.

4. **Power Connection:** Plug the hair dryer into a suitable electrical outlet. The hair dryer supports dual voltage (120V and 220-240V) automatically. For international travel, you may need a physical plug adapter for the specific region, but no voltage converter is required.

Global Voltage Hair Dryer

120V-240V for Worldwide Use



Image: A map indicating various global voltages and the hair dryer's compatibility, along with examples of plug adapters.

4. OPERATING INSTRUCTIONS

Familiarize yourself with the control buttons on the handle of the hair dryer.

Easy to Operate



Image: Close-up of the hair dryer's control panel, highlighting buttons for air temperature, air speed, cool shot, and on/off, along with LED indicators.

Power On/Off:

- To turn on: Press the On/Off button once.
- To turn off: Press and hold the On/Off button for 2 seconds. This design prevents accidental shutdown during use.

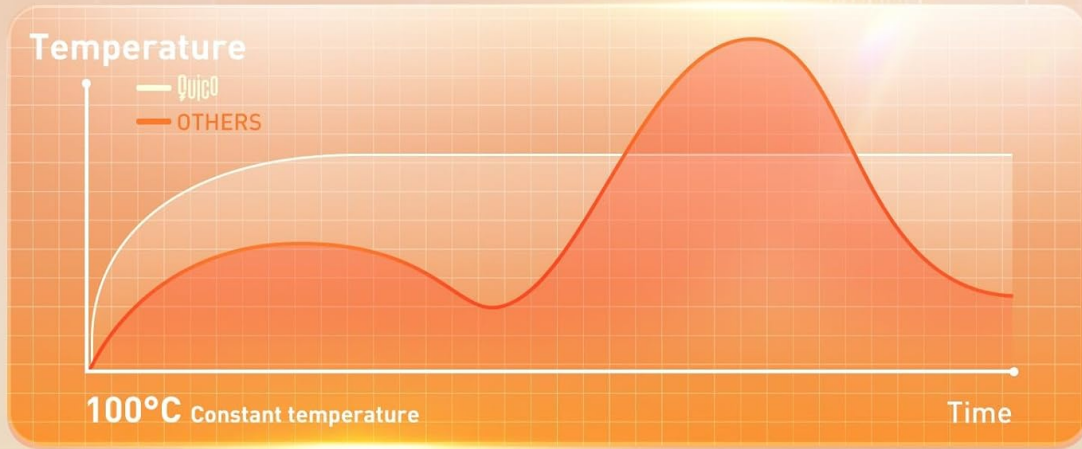
Your browser does not support the video tag.

Video: Demonstration of how to turn the QUICO HC410 hair dryer on and off by pressing and holding the power button for 2 seconds.

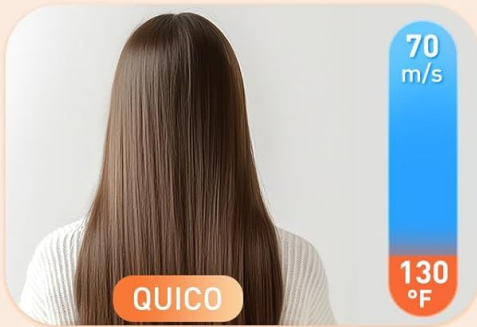
Adjusting Settings:

- **Air Temperature Setting:** Use the temperature button to cycle through Natural (Cool), Warm, and Hot settings. Corresponding LEDs will illuminate.
- **Air Speed Setting:** Use the speed button to cycle through Low, Middle, and High speed settings. Corresponding LEDs will illuminate.
- **Cool Shot Function:** Press and hold the Cool Shot button for 2 seconds to activate a burst of cool air, ideal for setting your hairstyle.

No Heat Damage



Quico High Speed



Traditional High Heat



Image: An illustration demonstrating the hair dryer's fast drying capability, showing different hair lengths and estimated drying times.

The 120,000 RPM brushless motor delivers powerful airflow (over 70 m/s wind speed) to significantly reduce drying time. The integrated 500 million negative ions help to condition hair, reducing frizz and increasing shine.

500 Million Negative Ions

Get healthier, shinier, and silkier hair



Image: A visual representation of the hair dryer emitting negative ions, illustrating their effect on hair for a healthier, shinier, and silkier finish.

5. MAINTENANCE

- **Cleaning the Air Filter:** The hair dryer features an Auto Clean Function. After shutting down the device, press and hold the Auto Clean Function button for 3 seconds within 10 seconds of shutdown to activate the self-cleaning mode. This helps maintain optimal performance.
- **General Cleaning:** Ensure the hair dryer is unplugged and completely cool before cleaning. Wipe the exterior with a soft, damp cloth. Do not use abrasive cleaners or immerse the appliance in water.
- **Storage:** When not in use, store the hair dryer in a dry place. The foldable design allows for compact storage.

Foldable Design & Easy to Carry

Go-Anywhere Compact



Image: The hair dryer in its folded state, placed next to a smartphone to illustrate its compact and travel-friendly size.

6. TROUBLESHOOTING

- **Hair Dryer Does Not Turn On:**

- Ensure the power cord is securely plugged into a working electrical outlet.
- Check if the ALCI safety plug has tripped. If so, press the "RESET" button on the plug.
- Confirm you are pressing and holding the On/Off button for 2 seconds to activate the device.

- **Airflow is Weak or Intermittent:**

- Check the air inlet and outlet for any obstructions (lint, hair, dust). Clean if necessary using the Auto Clean Function or manually.
- Ensure the air speed setting is not on the lowest setting.

- **Hair Dryer Shuts Off Unexpectedly:**

- The hair dryer has built-in overheat protection. If it becomes too hot, it will automatically shut off. Unplug the device and allow it to cool down for several minutes before attempting to use it again. Ensure air inlets/outlets are clear.
- Ensure you are not accidentally pressing the On/Off button during use. The 2-second hold

feature is designed to prevent this.

- **Magnetic Nozzle Detaches Easily:**

- Ensure the nozzle is properly aligned and securely attached to the magnetic connection point.

7. SPECIFICATIONS

Feature	Detail
Model Number	HC410
Brand	QUICO
Motor Speed	120,000 RPM Brushless Motor
Airflow Speed	Over 70 m/s
Ionic Technology	500 Million Negative Ions
Voltage	Dual Voltage (120V / 220-240V)
Wattage	1400 watts
Heat Settings	3 (Natural/Cool, Warm, Hot)
Speed Settings	3 (Low, Middle, High)
Product Dimensions	7.07 x 1.65 x 7.07 inches (folded)
Weight	1.0 lbs (approx. 1.52 Pounds shipping weight)
Material	Metal
Safety Features	UL-certified ALCI safety plug, Overheat Protection, Intelligent Temperature Control

8. WARRANTY AND SUPPORT

Specific warranty details are not provided in the available product information. For warranty claims, technical support, or further assistance, please contact QUICO customer service directly.

You can typically find contact information on the product packaging, the official QUICO website, or through your retailer.