

**typecase KB201T-100**

# typecase Touch iPad Keyboard Case User Manual

Model: KB201T-100

## 1. INTRODUCTION

Thank you for choosing the typecase Touch iPad Keyboard Case. This manual provides detailed instructions on how to set up, operate, maintain, and troubleshoot your new keyboard case. Please read this manual thoroughly to ensure optimal performance and longevity of your device.



*Image: The typecase Touch iPad Keyboard Case in yellow, featuring the iPad securely placed in the case and the keyboard with its multi-touch trackpad. A stylus is also visible.*

## 2. COMPATIBILITY

This keyboard case is specifically designed for the following iPad models:

- **iPad 10th Generation 10.9-inch (2022):** Models A2696, A2757, A2777
- **iPad A16 (11th Generation, 2025):** Models A3354, A3355, A3356

To verify your iPad model, check the back of your iPad for the model number or navigate to Settings > General > About > Model Number on your iPad.

# ONLY COMPATIBLE WITH IPAD 10TH GENERATION (2022) & IPAD A16 (2025)



## MODELS

(Please check the back of Tablet)



### iPad 10th

Model: A2696 A2777 A2757

### iPad A16 2025

Model: A3354, A3355, A3356

## How to verify your iPad model?

### Method 1

Verify on back of iPad



### Method 2

Verify in iPad Settings App

1. Open Settings App on iPad
2. Navigate to **General > About**
3. Tap on **Model Number** to display it

< General About	
Model Number	A2696



## NOT FOR



iPad air 4/5th  
(10.9 inch)



iPad air 11/13th  
(2025,M3,2024,M2)



iPad Pro 11/13  
(2024,M4)



iPad Pro 11 inch



iPad 7/8/9

Image: A visual guide illustrating how to identify compatible iPad models by checking the model number on the back of the device or through the iPad's settings menu.

## 3. FEATURES

The typecase Touch iPad Keyboard Case offers a range of features designed to enhance your iPad experience:

- **Precision Trackpad:** Navigate your iPad with multi-gesture controls for improved productivity.
- **Illuminated Typing:** Enjoy a laptop-like keyboard with a full row of iPadOS shortcuts and laser-etched keys. Features an adjustable 10-color RGB LED backlight.

- **7 Use Modes:** A patented 360° hinge allows for versatile use, including typing, viewing, and tablet modes.
- **Smart Protection:** Premium hard-shell design protects all sides of your iPad.
- **Auto Sleep/Wake:** Conserves battery life by initiating when the keyboard case is opened and closed.
- **Apple Pencil Holder:** Integrated holder to secure your Apple Pencil.
- **Slim & Portable:** Lightweight design for easy carrying.

## 6 MAJOR FUNCTIONS & 7-IN-1 DESIGN

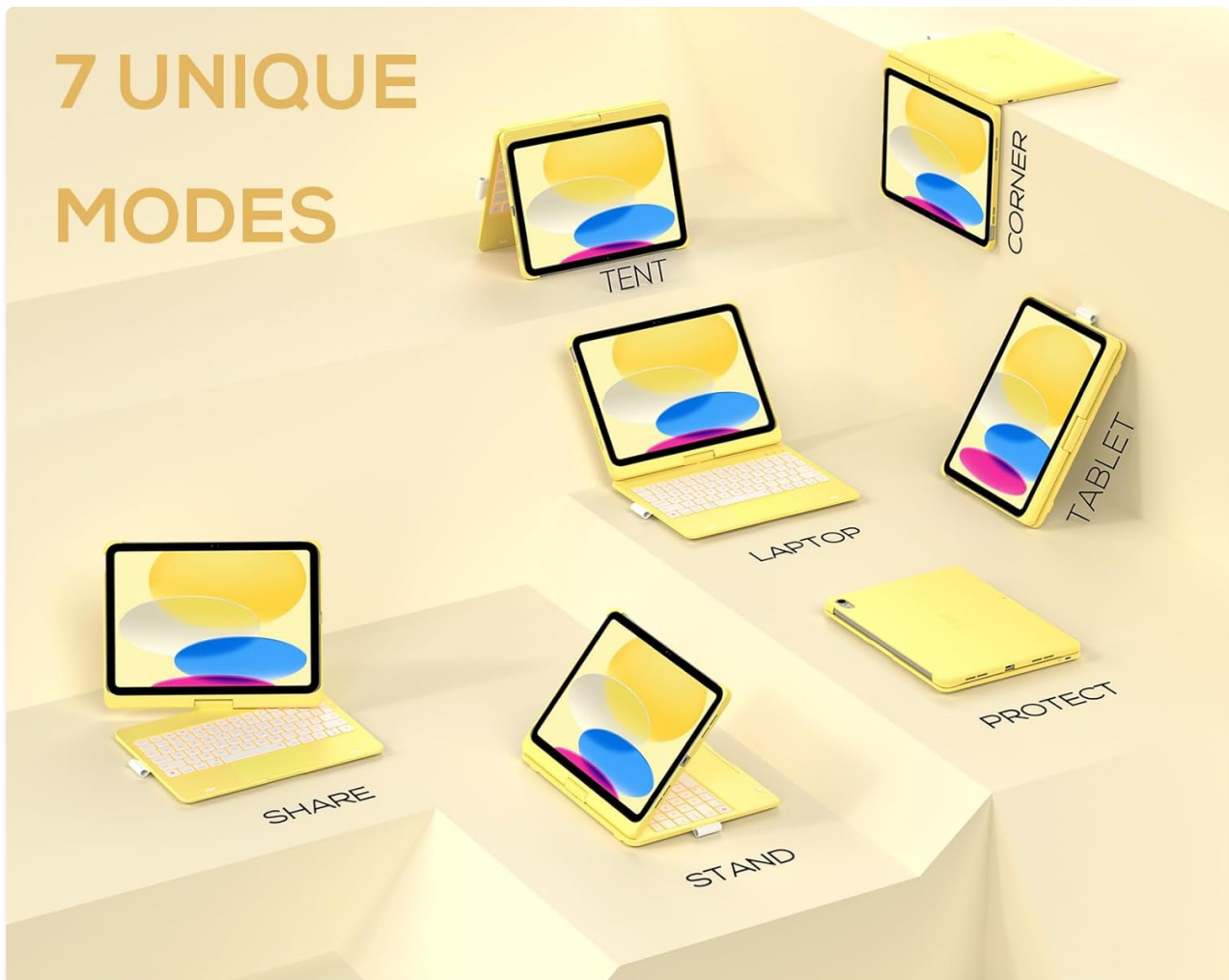


### 7-in-1 Design



*Image: An overview highlighting the key features of the keyboard case, including its protective design, 360° rotation, iPadOS shortcuts, pencil loop, 11-color backlight, and multi-touch trackpad.*

# 7 UNIQUE MODES



*Image: Visual representations of the seven distinct modes the keyboard case can be configured into, such as Laptop, Stand, Tent, and Tablet mode, demonstrating its versatility.*

## 4. SETUP

### 4.1 Charging the Keyboard

Before first use, fully charge the keyboard. Connect the included USB-C charging cable to the keyboard's Type-C charging port and the other end to a USB power adapter (not included).





Image: A detailed view of the keyboard's Type-C charging port, indicating battery life expectations for standby, daytime use, and nighttime use.

## 4.2 Inserting Your iPad

Carefully align your iPad with the case and gently press it into place until it is securely seated. Ensure all ports and buttons are accessible.

## 4.3 Bluetooth Pairing

1. Turn on the keyboard by sliding the power switch. The Bluetooth indicator light will begin to flash.
2. On your iPad, go to **Settings > Bluetooth**.
3. Ensure Bluetooth is turned **On**.
4. Select the keyboard (e.g., "typecase Keyboard") from the list of available devices.
5. Follow any on-screen prompts to complete the pairing process. The indicator light will turn solid when connected.

# 5. OPERATING INSTRUCTIONS

## 5.1 Keyboard Usage

The keyboard features a standard 78-key layout with dedicated iPadOS shortcut keys. These shortcuts allow quick access to common functions like Home, Search, Media Controls, and Volume.

## Easy to carry

Folds into a slim cover gives your iPad front and back protection



*Image: A top-down view of the keyboard, highlighting its spacious 78-key layout and integrated iPadOS shortcuts for efficient use.*

### 5.2 Backlight Control

The keyboard features an 11-color RGB LED backlight with adjustable brightness levels. Use the dedicated backlight keys (usually Fn + Light icon) to cycle through colors and adjust brightness.

# BACKLIT KEYBOARD



Dedicated row of iOS shortcut keys for zen-like productivity.



Standard layout keyboard with 78 comfortably spaced keys.



Keys are laser etched, so the character on each key is illuminated.



11-color backlight enables quicker keystrokes in darker rooms.

*Image: A close-up of the keyboard demonstrating its backlit keys and the dedicated row of iOS shortcut keys, designed for enhanced productivity in various lighting conditions.*

## 5.3 Trackpad Functionality

The multi-touch trackpad supports various iPadOS gestures for seamless navigation, document editing, web browsing, and app switching. Refer to your iPad's settings for a full list of supported gestures.



Unexpected surprises, the best gifts for family and friends.



Image: A visual representation of the integrated trackpad, highlighting its multi-touch capabilities for managing files, browsing the web, and switching between applications.

#### 5.4 360° Rotatable Hinge and Use Modes

The patented 360° hinge allows you to rotate your iPad to achieve various viewing and working angles. This enables 7 unique use modes, including Laptop, Stand, Tent, Tablet, Corner, Share, and Protect modes.

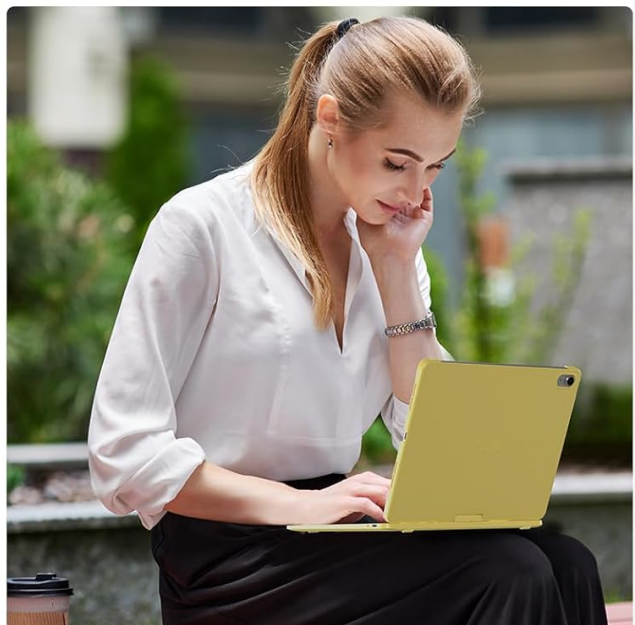
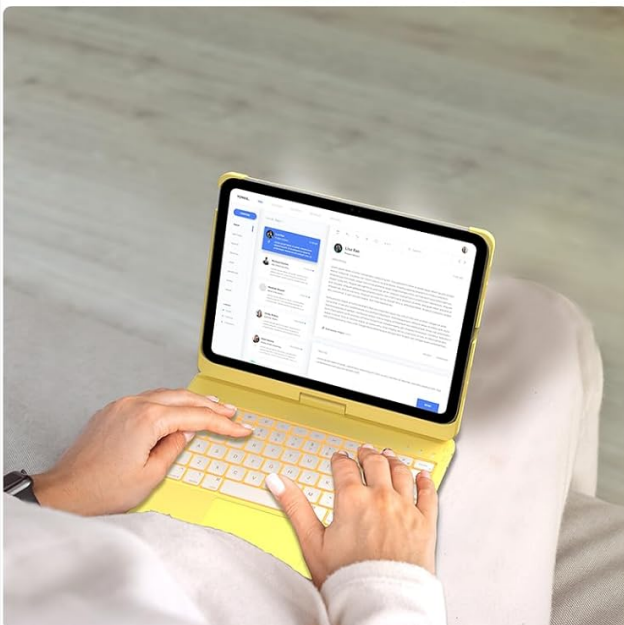
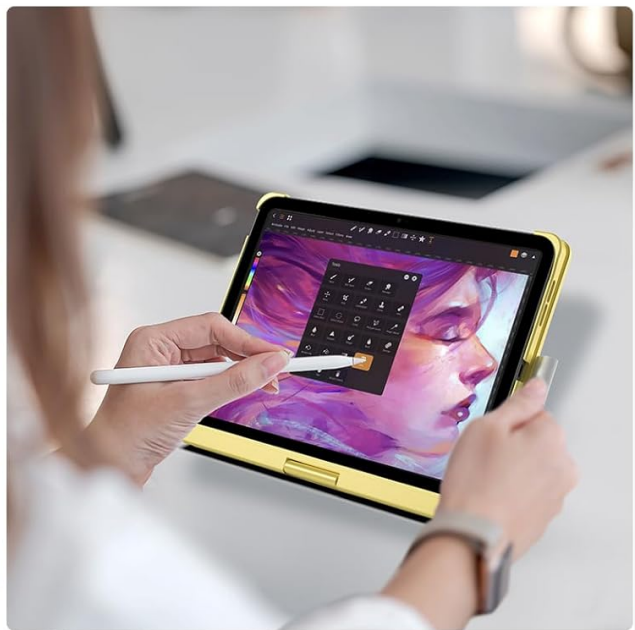


Image: A collage showing the keyboard case in different practical applications, such as video conferencing, digital drawing, and typing in various environments.

## 6. MAINTENANCE

### 6.1 Cleaning

To clean the keyboard case, use a soft, damp cloth. Avoid using harsh chemicals or abrasive materials that could damage the surface. For the keyboard keys, a soft brush or compressed air can remove dust and debris.

### 6.2 Battery Care

The keyboard is powered by a Lithium Polymer battery. To maximize battery life:

- Turn off the keyboard when not in use for extended periods.
- Avoid extreme temperatures.
- Charge the keyboard regularly, but avoid leaving it fully discharged for long durations.

## 7. TROUBLESHOOTING

### 7.1 Keyboard Not Connecting

- Ensure the keyboard is charged and powered on.
- Check that Bluetooth is enabled on your iPad.
- Forget the device in your iPad's Bluetooth settings and attempt to re-pair.
- Restart both your iPad and the keyboard.

### 7.2 Backlight Not Working

- Ensure the keyboard has sufficient battery charge.
- Press the backlight control keys (Fn + Light icon) to cycle through brightness levels and colors.

### 7.3 Trackpad Unresponsive

- Ensure the keyboard is properly connected via Bluetooth.
- Check iPad settings for trackpad gestures and ensure they are enabled.
- Clean the trackpad surface to remove any obstructions.

## 8. SPECIFICATIONS

Feature	Detail
Product Dimensions	10.9 x 10 x 1 inches

Item Weight	1.92 pounds
Manufacturer	typecase
Model Number	KB201T-100
Batteries	1 Lithium Polymer battery (included)
Connectivity Technology	Bluetooth
Keyboard Description	Flexible
Number of Keys	78
Special Feature	360° Rotatable, Backlit, Ergonomic, Lightweight, Trackpad
Color	Yellow
Included Components	Keyboard

## 9. WARRANTY AND SUPPORT

The typecase Touch iPad Keyboard Case comes with a standard manufacturer's warranty. Please refer to the product packaging or the official typecase website for specific warranty terms and conditions. For technical support or further assistance, please contact typecase customer service through their official channels.