



Manuals.plus /

› Qulokar /

› Qulokar 3 Channel 4K Dash Cam User Manual

Qulokar Q-316

Qulokar 3 Channel 4K Dash Cam User Manual

Model: Q-316

INTRODUCTION

This user manual provides detailed instructions for the installation, operation, and maintenance of your Qulokar 3 Channel 4K Dash Cam. Designed to enhance your driving safety and provide comprehensive surveillance, this dash cam records simultaneously from the front, rear, and inside of your vehicle. Please read this manual thoroughly before using the device to ensure optimal performance and longevity.

WHAT'S IN THE BOX

- Dash Cam with Suction Cup Mount
- Rear Camera
- Car Charger
- User Manual
- Installation Tool
- 64GB SD Card

Enhanced Night Vision

Delivers clear footage even in low-light conditions.

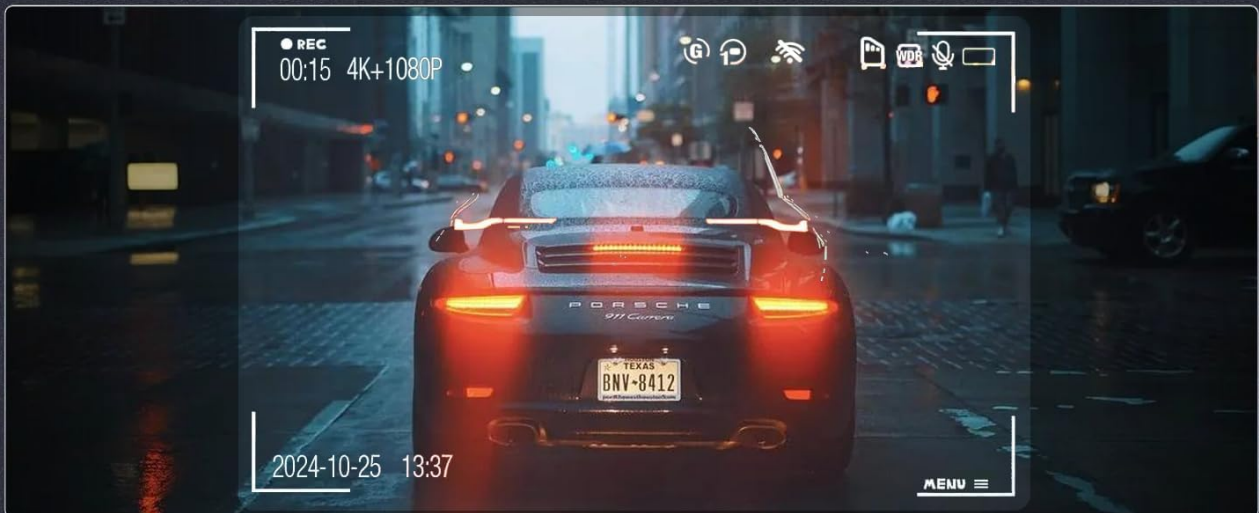
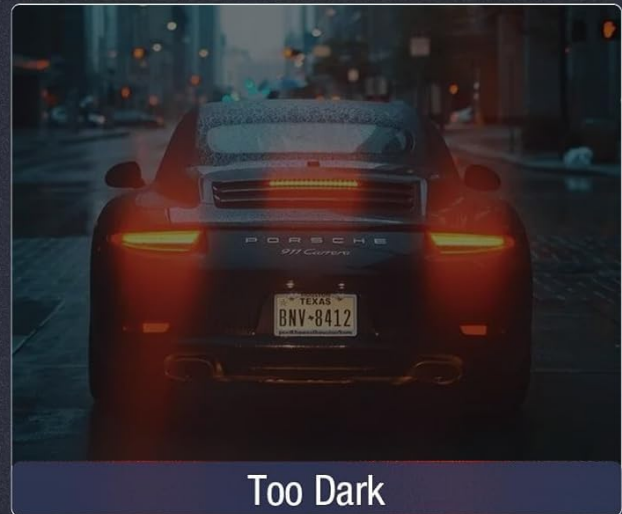
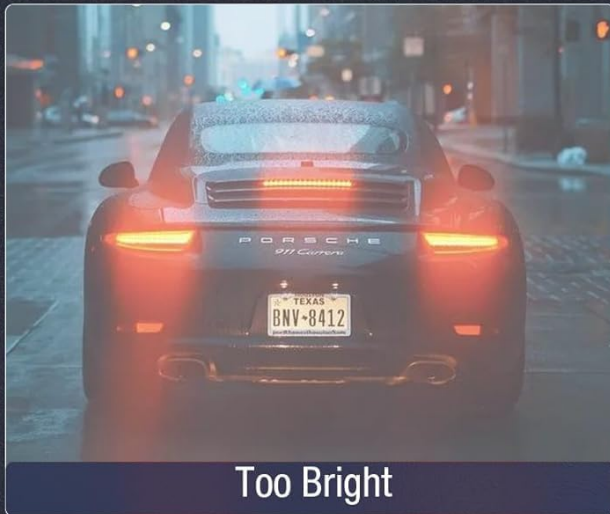


Figure 1: Package Contents

SETUP

Mounting the Dash Cam

1. Clean the windshield area where the dash cam will be mounted. Ensure it is free from dust and grease for optimal suction.
2. Attach the suction cup mount to the dash cam. Press the suction cup firmly against the windshield and lock the lever to secure it.
3. Adjust the angle of the dash cam to ensure a clear view of the road ahead. The front camera should capture the entire road, while the interior camera should cover the cabin.



Figure 2: Dash Cam Mounted on Windshield

Connecting the Rear Camera and Power

1. Connect the rear camera cable to the main dash cam unit. Route the cable discreetly along the vehicle's interior trim to the rear of the car.
2. Mount the rear camera on the rear windshield, ensuring a clear view. Adjust its angle as needed.
3. Insert the included 64GB SD card into the dash cam's SD card slot.
4. Connect the car charger to the dash cam's power input and plug the other end into your vehicle's 12V power outlet (cigarette lighter socket).

Video 1: Dash Cam Installation and Initial Power On

This video demonstrates the process of installing the dash cam, including routing cables and powering on the device for the first time.

Video 2: Unboxing and Installation Overview

This video provides an overview of the product's components and a quick guide to the installation process.

OPERATING INSTRUCTIONS

3-Channel Recording

The Qulokar dash cam simultaneously records video from three channels: front (4K), interior (1080P), and rear (1080P). This provides comprehensive coverage of your vehicle's surroundings and cabin.



Figure 3: 3-Channel Coverage

Video 3: 3 Channel 4K Dash Cam Overview

This video highlights the multi-channel recording capabilities and video quality of the dash cam.

Loop Recording

The dash cam features continuous loop recording, automatically overwriting the oldest videos with the newest ones when the SD card reaches its maximum storage capacity. This ensures seamless recording without manual intervention.



Figure 4: Loop Recording Function

Built-in G-Sensor & 24H Parking Monitor

The built-in G-sensor automatically detects sudden shakes or collisions and locks the current video footage to prevent it from being overwritten. The 24-hour parking monitor activates recording upon detecting motion or impact when the vehicle is parked, providing security even when you're away. (Note: Parking mode requires an optional ACC hardwire kit, not included).



**G-Sensor
Automatocally Lock**

When emergency happens, the dash cam will automatocally start to record and lock the video So it won't be overwritten.

**24 Hours
Parking Monitor**

Dash Cam Front & Inside Parking Monitor It will start video recording for 30s once detects movement or collision.

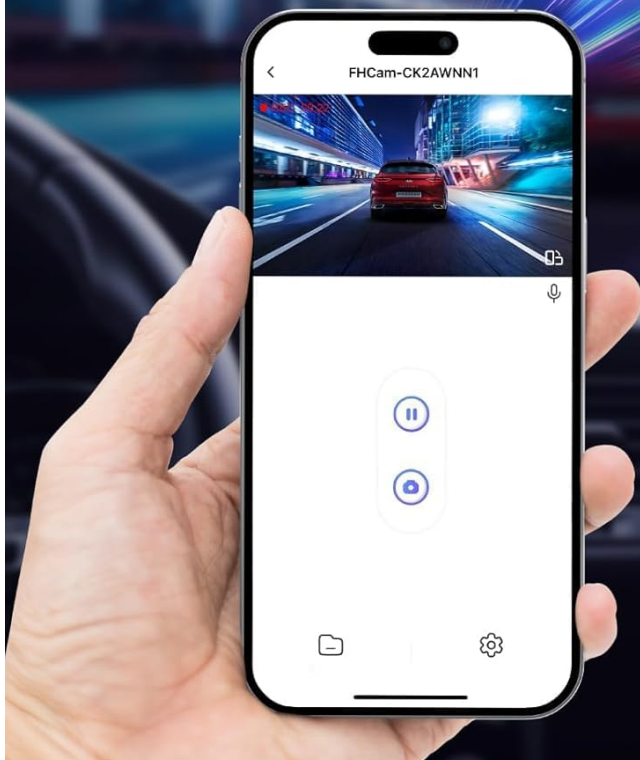
Parking mode require hardwire kit (Not included, need to purchase separately)

Figure 5: G-Sensor and Parking Monitor

Enhanced Night Vision

Equipped with a 6-glass lens, large aperture, and advanced night vision technology, the dash cam delivers clear footage even in low-light conditions, ensuring visibility and detail during nighttime driving.

Built in 5G & APP Control



Up to 20MB/S

Figure 6: Enhanced Night Vision

Built-in 5G WiFi & APP Control

The dash cam features built-in 5G WiFi for faster data transfer and seamless connection to the dedicated mobile application (Viidure APP). Through the app, you can view live footage, download recorded videos, and adjust camera settings directly from your smartphone.

Loop Recording Function

The Q316 features continuous loop recording, automatically overwriting the oldest footage when storage is full. No need to worry about running out of space.



Figure 7: WiFi and App Control

Video 4: How to Connect to WiFi

This video provides a step-by-step guide on connecting your dash cam to your smartphone via WiFi using the Viidure APP.

MAINTENANCE

Cleaning

Regularly clean the camera lenses with a soft, lint-free cloth to ensure clear video quality. Avoid using abrasive cleaners or solvents.

SD Card Management

It is recommended to format the SD card periodically (e.g., once a month) to maintain optimal performance and prevent data corruption. Back up any important footage before formatting.

TROUBLESHOOTING

Dash Cam Not Powering On

- Check the car charger connection to both the dash cam and the vehicle's 12V outlet.
- Ensure the vehicle's 12V outlet is functioning correctly.
- Verify that the power button on the dash cam is pressed firmly.

Recording Issues

- Ensure the SD card is properly inserted and not full. Format the SD card if necessary.
- Check the video resolution settings; higher resolutions require more storage space.
- Clean the camera lenses if footage appears blurry.

WiFi Connection Problems

- Ensure WiFi is enabled on the dash cam and your smartphone.
- Verify that you are within the 3-5 meter range of the dash cam for WiFi connectivity.
- Check the WiFi password and ensure it is entered correctly on your phone.

SPECIFICATIONS

Feature	Detail
Product Dimensions	5 x 1.8 x 2.5 inches
Item Weight	1.15 pounds
Item Model Number	Q-316
Connectivity Technologies	Wi-Fi
Special Features	App Control, Built-In Display
Color	Black
Manufacturer	Qulokar
Orientation	Front and Rear and Inside
Vehicle Service Type	Car, SUVs, Truck
Video Capture Resolution	4K, 2K, 1080P
Mounting Type	Windshield Mount
Field Of View	170 Degrees

WARRANTY AND SUPPORT

Your Qulokar 3 Channel 4K Dash Cam comes with a one-year warranty, ensuring peace of mind. Should you have any questions or require assistance with your product, our professional technical support team is available to respond within 24 hours. Please refer to the contact information provided in the packaging for support inquiries.

