

manuals.plus /

- › [DWVO](#) /
- › [DWVO Computer Desk with Drawers & Hutch \(Model MADWVXjbWA\) - User Manual](#)

DWVO MADWVXjbWA

DWVO Computer Desk with Drawers & Hutch

Model: MADWVXjbWA | Brand: DWVO

INTRODUCTION

This manual provides comprehensive instructions for the assembly, operation, and maintenance of your new DWVO Computer Desk with Drawers & Hutch. Please read this guide thoroughly before assembly and use to ensure proper function and longevity of your product.



The DWVO Computer Desk, designed for home office and gaming setups.

Safety Information

WARNING: Failure to follow these safety instructions may result in injury or damage to the product.

- Do not place heavy objects on the desk top or hutch that exceed its weight capacity to avoid tipping.
- Ensure all components are securely assembled before use. Regularly check and tighten all fasteners.
- Do not overload electrical outlets. Always use surge protectors for multiple devices.
- Take regular breaks when using the desk for extended periods to prevent eye strain and maintain good posture.
- Utilize the included anti-tip hardware to secure the desk to a wall, especially if children are present.



✕ POTENTIAL INJURY



✓ AVOID FALLING DANGER

Secure the desk to the wall using anti-tip hardware to prevent accidents.

PACKAGE CONTENTS

Before beginning assembly, please verify that all parts listed below are present and undamaged. If any parts are missing or damaged, please contact customer support.

- 1 x Computer Desk (disassembled components)
- 1 x Instructions Manual (this document)
- 1 x Packet of Fittings (screws, bolts, connectors)

ASSEMBLY INSTRUCTIONS

Assembly is required for this product. It is recommended that **two people** perform the assembly to ensure stability and ease of construction. Please note that assembly tools are not included and must be provided by the user.

Technical drawing of a desk with dimensions in inches and centimeters.

Main Desk Dimensions:

- Overall Height: 59.1" / 150cm
- Top Shelf Widths: 15.4", 14.6", 15.4"
- Top Shelf Spacing: 4.5", 10.4", 13.4"
- Desk Top Width: 59.1"
- Desk Top Depth: 12"
- Desk Top Thickness: 0.7"
- Drawer 1 (Right): 12" wide, 19.8" high
- Drawer 2 (Left): 16.5" wide, 7.3" high
- Drawer 3 (Left): 19.68" / 50cm wide, 6.7" high
- Lower Shelf Width: 30.5"
- Lower Shelf Depth: 12"
- Lower Shelf Height: 3.3"
- Leg Height: 29.6"

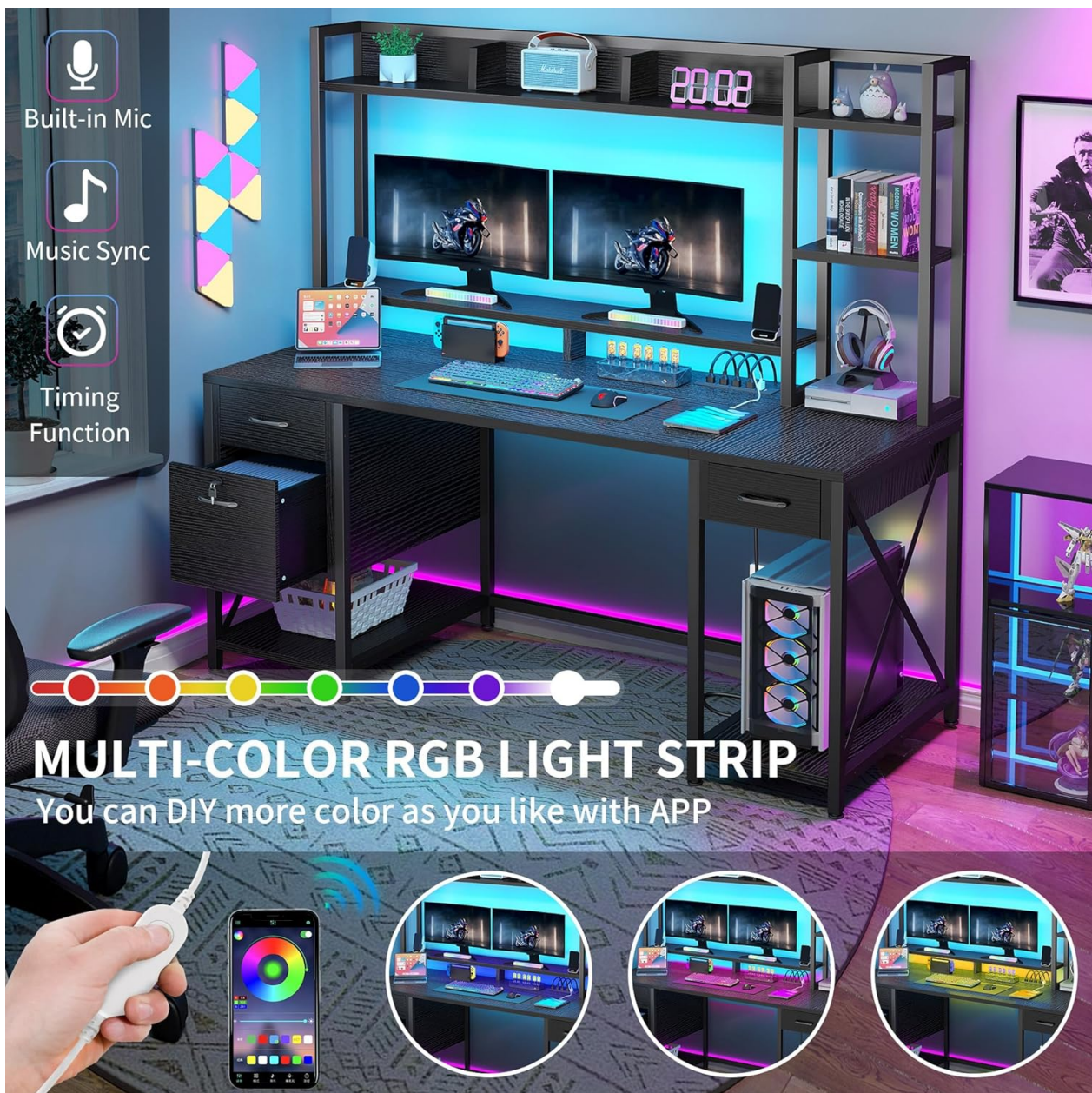
Drawer Dimensions (Exploded View):

- Drawer 1:** 14.4" wide, 9.1" deep, 3.9" high, 8.3" top width, 5.3" bottom width.
- Drawer 2:** 14.4" wide, 13.8" deep, 4.1" high, 13" top width, 5.3" bottom width.
- Drawer 3:** 16.3" wide, 13.8" deep, 10.8" high, 13" top width, 11.6" bottom width.

General Assembly Steps:

- ## PRODUCT FEATURES AND OPERATION

The desk features an RGB LED light strip for customizable ambiance. Control the lights flexibly via a dedicated phone application or the integrated light strip switch. You can select any color, choose from various modes including music sync, set timer functions, and utilize the built-in microphone for reactive lighting effects.



MULTI-COLOR RGB LIGHT STRIP

You can DIY more color as you like with APP

Customize your workspace lighting with the RGB LED light strip.

Integrated Charging Station

A convenient charging station is built into the desk, featuring 2 USB ports and 4 standard power outlets. This allows for easy charging of laptops, tablets, printers, and other electronic devices. The power cord is 6.56 feet long, providing flexibility for placement.



120V/12A
[2 AC Outlets]



5V/2A
[2 USB Ports]



6.56 Feet
[Power Cord]

The integrated charging station provides easy access to power for your devices.

Hutch and Monitor Stand

The computer desk includes a detachable top hutch and a full monitor shelf. This design maximizes desktop space and improves overall workspace utilization, allowing for comfortable placement of monitors and other accessories.

WITH MONITOR STAND & EXTRA HUTCH

The detachable top hutch of computer desk reserves more space for your desktop, which greatly improves the utilization rate of the desktop

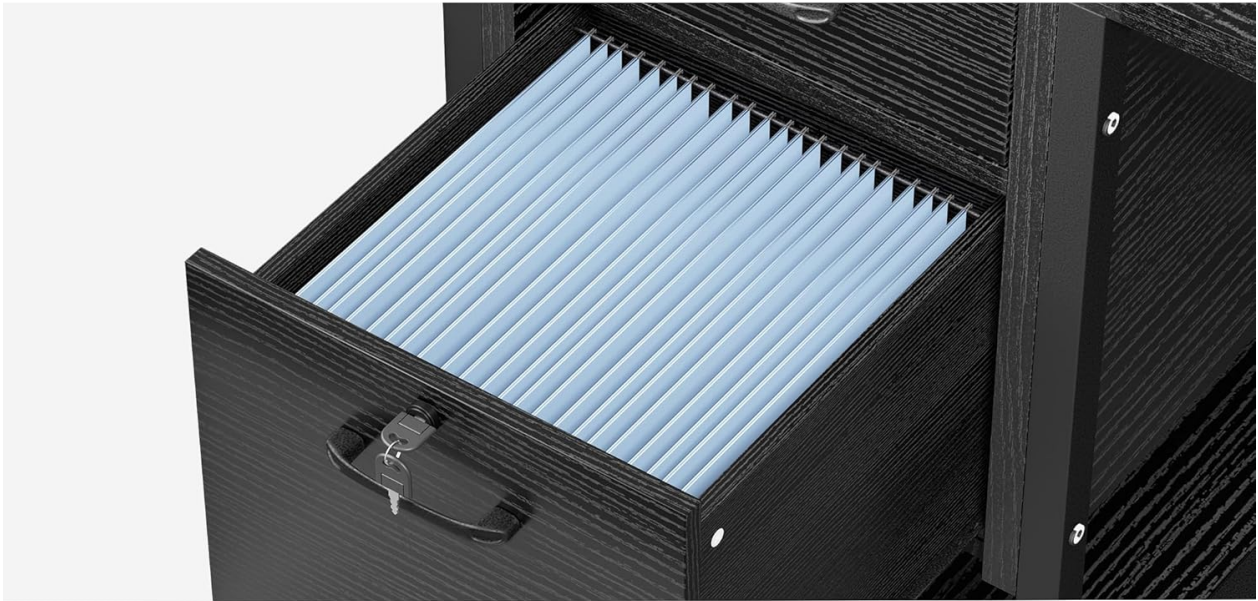


The hutch and monitor stand optimize desktop space.

Storage Solutions

The desk offers extensive storage capacity to keep your workspace organized. It includes three drawers, the top hutch, and side storage shelves. The spacious tabletops and monitor stand (59.1"W x 19.68"D) can accommodate two monitors and other essentials.

MULTIFUNCTIONAL FILE DRAWER



A4 Size



Letter Size



The multifunctional file drawer supports both A4 and Letter size documents.

Lockable Drawer and Construction

One of the drawers is lockable, providing secure storage for personal items or important documents. The desk is constructed with a 0.79" metal frame and 0.59" high-grade P2 particle board, ensuring durability. Smooth sliding rails are used for the drawers, and strong metal support legs with adjustable foot pads maintain stability on uneven surfaces.



Lockable Drawer



Smooth Sliding Rail



Metal Handle



Strong Metal Support Legs

Key features include a lockable drawer, smooth operation, and stable construction.

MAINTENANCE AND CARE

- **Cleaning:** Wipe surfaces with a soft, damp cloth. Avoid harsh chemicals or abrasive cleaners that may damage the finish.
- **Spills:** Immediately wipe up any spills to prevent moisture damage to the particle board.
- **Heat:** Avoid placing hot items directly on the desk surface. Use coasters or protective pads.
- **Sunlight:** Prolonged exposure to direct sunlight may cause fading or discoloration.
- **Fasteners:** Periodically check and retighten all screws and bolts to ensure the desk remains stable.

TROUBLESHOOTING

- **Desk Wobbles:** Ensure all assembly screws are tightened. Adjust the foot pads on the bottom of the legs to stabilize the desk on uneven floors.
- **Drawers Stick:** Check that the drawer slides are properly aligned and free of obstructions. Ensure the drawer is not overloaded.
- **LED Lights Not Working:** Verify that the power adapter is securely plugged into both the light strip and

a working power outlet. Check the app or switch settings.

- **Charging Station Not Functioning:** Confirm the desk's main power cord is plugged into a live outlet. Test the outlets with another device.

SPECIFICATIONS

| Feature | Detail |
|---------------------------------|--|
| Brand | DWVO |
| Model Number | MADWVXjbWA |
| Product Dimensions (D x W x H) | 19.68"D x 59.1"W x 59.1"H |
| Item Weight | 94.3 Pounds |
| Color | Black |
| Material | Engineered Wood (Top, Hutch), Metal (Base, Legs) |
| Number of Drawers | 3 |
| Special Features | Power Outlets, USB Outlets, LED Lights, Drawers, Lock, Hutch |
| Power Cord Length | 6.56 ft |
| Required Assembly | Yes |
| Recommended People for Assembly | 2 |

WARRANTY AND SUPPORT

This DWVO product comes with a Limited Warranty. For specific details regarding warranty coverage, terms, and conditions, please refer to the warranty information provided with your purchase or contact DWVO customer service.

For any questions, assistance with assembly, or to report missing/damaged parts, please contact DWVO customer support through the retailer where the product was purchased or via the official DWVO website.

PRODUCT VIDEOS

Watch the official product video for an overview of the DWVO Computer Desk with Drawers & Hutch.

Your browser does not support the video tag.

Official product video showcasing the DWVO Computer Desk with Drawers & Hutch.

