

CooFel CooFel-DAI-15

CooFel 10'x10' Outdoor Retractable Pergola User Manual

Model: CooFel-DAI-15

1. INTRODUCTION

Thank you for choosing the CooFel 10'x10' Outdoor Retractable Pergola. This manual provides essential information for the safe assembly, operation, and maintenance of your new outdoor structure. Please read these instructions thoroughly before beginning assembly and retain them for future reference.



Figure 1: An overview of the assembled CooFel 10x10 Outdoor Retractable Pergola, showcasing its gray aluminum frame and retractable fabric canopy.

2. SAFETY INFORMATION

- Read all instructions carefully before assembly and use.
- Ensure all components are present and undamaged before starting assembly.
- Assembly should be performed by at least two to three adults.
- Wear appropriate safety gear, such as gloves, during assembly.
- Securely anchor the pergola to the ground using the provided expansion screws to prevent tipping in windy conditions.
- The canopy is not designed for use in extreme weather conditions, including strong winds, heavy rain, or snow. Retract the canopy and store it during such conditions to prevent damage.
- Do not hang heavy objects from the pergola frame.
- Keep children and pets away from the assembly area.
- Regularly inspect the pergola for loose parts or damage. Tighten fasteners and replace damaged components as needed.

3. PACKAGE CONTENTS

Verify that all parts listed in the packing list (usually found in the product box) are present before beginning assembly. All screws and components are labeled for easy identification.

Key Components:

- Aluminum Alloy Frame Components (posts, beams)
- Retractable Polyester Fabric Canopy
- Sliding Track System
- Ground Expansion Screws and Anchoring Hardware
- Assembly Hardware (bolts, nuts, washers, etc.)
- Instruction Manual

4. SETUP AND ASSEMBLY INSTRUCTIONS

The CooFel pergola is designed for straightforward assembly. Detailed illustrated instructions are provided in the product packaging. Please follow them step-by-step.

1. **Preparation:** Clear the assembly area. Ensure you have enough space and that the ground is level. Gather all tools required (e.g., wrench, screwdriver).
2. **Frame Assembly:** Begin by assembling the main aluminum alloy frame. Connect the posts and crossbeams according to the numbered diagrams in your specific instruction manual. The thickened posts (3.5"x3.5" / 90x90mm) and rust-resistant coating contribute to stability.
3. **Canopy Track Installation:** Install the built-in sliding track system onto the frame. Ensure it is securely fastened and aligned for smooth canopy operation.
4. **Canopy Attachment:** Carefully attach the 100% thickened polyester fabric canopy to the sliding track system.
5. **Anchoring:** Once the pergola is fully assembled, use the provided ground expansion screws to securely anchor the posts to the ground. This is crucial for stability, especially in windy conditions.

Note: Assembly typically requires 2-3 people and can be completed in approximately 2-3 hours.

WIND-RESISTANT AND ANTI-TILT

Stable outdoor companion

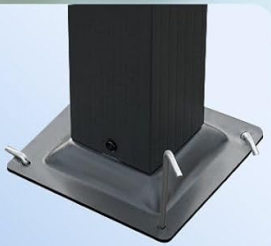
OURS



Aluminum Alloy Frame



3.5" / 90mm Aluminum Alloy Post



Anti-rust Coating for Corrosion Protection



OTHERS



Galvanized Steel Tubes (Easy to Deform)



Posts with Only 2.3" / 60mm



Post without Anti-rust Coating



Figure 2: An image comparing the CooFel pergola's aluminum alloy frame, 3.5-inch posts, and anti-rust coating with less robust alternatives, highlighting its wind-resistant and anti-tilt design.

5. OPERATING INSTRUCTIONS

Adjusting the Retractable Canopy:

The pergola features an adjustable retractable canopy, allowing you to control the amount of sun and shade. The canopy operates via a smooth sliding track design.

1. **To Extend the Canopy:** Gently pull the designated strap or handle to slide the canopy fabric outwards along the tracks.
2. **To Retract the Canopy:** Gently pull the designated strap or handle to slide the canopy fabric inwards along the tracks.
3. **Securing Position:** Once the desired shade area is achieved, use the built-in buckle or locking mechanism to secure the canopy in place. This prevents it from moving unintentionally.

Important: Retract the canopy during strong winds, heavy rain, or snow to prevent damage to the fabric and frame. The canopy is designed to block 98% of UV rays (UV50+) and offers Level 5+ PA waterproofing for light rain.



Figure 3: A close-up view of the pergola's retractable canopy mechanism, showing how to pull a strap to adjust the shade area and a buckle to secure its position.

6. MAINTENANCE

- **Canopy Cleaning:** Clean the polyester fabric canopy periodically with mild soap and water. Rinse thoroughly and allow it to air dry completely before retracting or storing. Do not use harsh chemicals or abrasive cleaners.
- **Frame Cleaning:** Wipe the aluminum alloy frame with a damp cloth to remove dirt and debris. The rust-resistant coating helps protect the frame, but regular cleaning maintains its appearance.
- **Hardware Inspection:** Periodically check all bolts, screws, and connections to ensure they are tight. Retighten any loose fasteners to maintain structural integrity.
- **Winter Storage:** In areas with heavy snow or prolonged freezing temperatures, it is recommended to remove the canopy fabric and store it indoors to prolong its lifespan.
- **Extreme Weather:** Always retract and secure the canopy during strong winds or heavy precipitation.

7. TROUBLESHOOTING

Problem	Possible Cause	Solution
---------	----------------	----------

Problem	Possible Cause	Solution
Canopy does not slide smoothly.	Debris in tracks, misaligned tracks, or loose connections.	Clean tracks of any obstructions. Check track alignment and tighten any loose fasteners.
Pergola feels unstable.	Anchoring screws not fully secured, loose frame connections, or uneven ground.	Ensure ground expansion screws are fully tightened. Check all frame connections and re-tighten. Verify the installation surface is level.
Water pooling on canopy.	Canopy not fully extended or slight sag.	Ensure canopy is fully extended and taut. If persistent, check frame for levelness. Note: Canopy is for light rain; retract during heavy rain.

8. SPECIFICATIONS

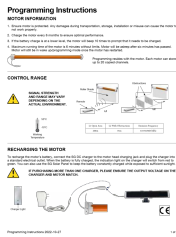
Feature	Detail
Brand	CooFel
Model Number	CooFel-DAI-15
Product Dimensions	149"L x 45"W x 21"H (Note: These dimensions likely refer to packaging or a specific component. The overall assembled pergola is 10x10 ft. Please refer to the product listing for exact assembled dimensions.)
Frame Material	Aluminum Alloy (Features a heavy-duty aluminum alloy frame with rust-resistant coating.)
Post Dimensions	3.5"x3.5" / 90x90mm (Thickened posts)
Canopy Material	100% Thickened Polyester Fabric
UV Protection	UV50+ (Blocks 98% of UV rays)
Water Resistance Level	Level 5+ PA coating (Provides superior waterproofing for light rain. Not recommended for heavy rain.)
Assembly Required	Yes
Color	Gray (as shown)

Note on specifications: Where product description and specifications provided conflicting information (e.g., Frame Material, Water Resistance), the more detailed and consistent information from the product description was prioritized. Users should always refer to the latest product listing for the most accurate specifications.

9. WARRANTY AND SUPPORT

For warranty information, technical support, or to inquire about replacement parts, please contact CooFel customer service through the retailer where the product was purchased. Please have your model number (CooFel-DAI-15) and purchase date available when contacting support.

Related Documents - CooFel-DAI-15



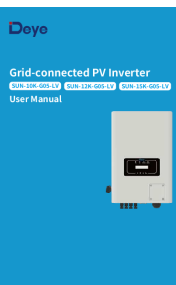
Sun Glow Motor Programming Instructions: Setup Guide

Comprehensive guide to programming Sun Glow motorized shades. Covers motor information, control range, recharging, basic and advanced settings including limits, preferred positions, speed, tilt mode, and channel management via remote controls.



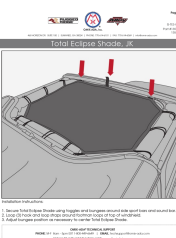
Crown Shades 10 FT x 15 FT Gazebo Use and Care Guide

This guide provides instructions for setting up, taking down, and caring for your Crown Shades 10 FT x 15 FT Gazebo. It includes details on package contents, assembly steps, safety instructions, warranty information, and spare parts.



[Deye Grid-connected PV Inverter User Manual: SUN-10K-G05-LV, SUN-12K-G05-LV, SUN-15K-G05-LV](#)

This user manual provides comprehensive guidelines for the installation, operation, and maintenance of Deye SUN-10K-G05-LV, SUN-12K-G05-LV, and SUN-15K-G05-LV grid-connected PV inverters. It covers safety warnings, product specifications, and troubleshooting.



Rugged Ridge Total Eclipse Shade JK Installation Guide

Step-by-step installation instructions for the Rugged Ridge Total Eclipse Shade for Jeep JK models, provided by Omix-Ada.

