

Manuals+

[Q & A](#) | [Deep Search](#) | [Upload](#)

manuals.plus /

- > [lensuge](#) /
- > [Dash Cam User Manual](#)

lensuge Y15-BF6 DASH CAM

Dash Cam User Manual

Model: Y15-BF6 DASH CAM | Brand: lensuge

1. INTRODUCTION

Thank you for choosing the lensuge Dash Cam. This manual provides detailed instructions on how to install, operate, and maintain your new dash camera. Please read this manual thoroughly before using the product to ensure proper functionality and to maximize your driving safety.

2. PACKAGE CONTENTS

Please check the package carefully to ensure all items are present:



Figure 2.1: All components included in the package.

- 1 x Dual Dash Cam
- 2 x Screws
- 1 x 32GB High-Speed Memory Card
- 1 x Lighter Car Charger Power Cable
- 1 x User Manual
- 1 x Rear Camera Cable
- 1 x 3M Adhesive
- 1 x Rear Camera

3. PRODUCT OVERVIEW

Familiarize yourself with the main components of your dash cam:



Figure 3.1: Dash Cam Component Diagram.

- **Built-in GPS Bracket:** For secure mounting and potential GPS functionality (if supported by model).
- **Horn Hole:** Speaker output.
- **Microphone:** For audio recording.
- **TF Card Slot:** Insert your 32GB memory card here.
- **6-Glass Lens:** High-quality lens for clear video capture.
- **Starvis Sensor:** Enhances low-light performance.
- **Inside Night Vision Infrared Light:** Provides illumination for interior camera in dark conditions.
- **Menu Function Bar:** Buttons for navigation and settings.

4. SETUP AND INSTALLATION

Follow these steps for proper installation of your dash cam:

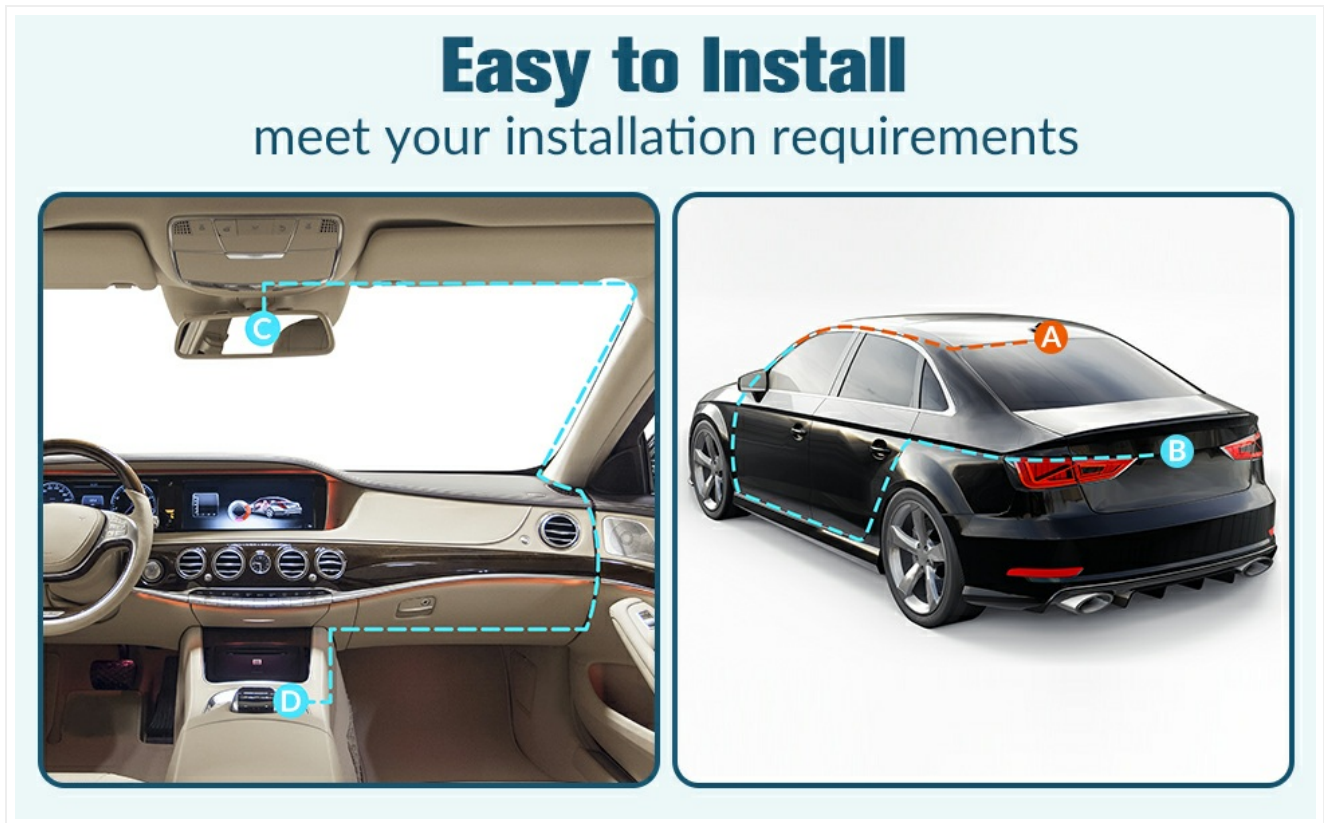


Figure 4.1: Recommended cable routing for installation.

1. **Prepare the Memory Card:** Insert the included 32GB U3-speed memory card into the TF card slot of the dash cam. Ensure it is inserted correctly.
2. **Mount the Front Dash Cam:** Utilize the included suction mount to securely attach the main dash cam unit to your car's windshield. Choose a location that does not obstruct your view of the road.
3. **Connect Power:** Connect the lighter car charger power cable to the dash cam and plug the other end into your vehicle's 12V power outlet (cigarette lighter socket).
4. **Install Rear Camera (Optional):**
 - Mount the rear camera to the rear windshield or license plate area using the provided screws or 3M adhesive.
 - Route the rear camera cable from the rear of the vehicle to the front, connecting it to the main dash cam unit. Ensure cables are tucked away neatly to avoid interference with driving.
5. **Initial Power On:** Once connected to a power source, the dash cam will automatically begin recording upon car ignition.
6. **Remove Protective Film:** Before first use, remove any protective film from the camera lenses and the display screen.

5. OPERATING INSTRUCTIONS

Your lensuge Dash Cam offers multiple recording features to enhance your driving safety.

5.1. Multi-Channel Recording

3 Channel Recording



Front, rear and built-in cameras provide you with live video from three sides of the car as security

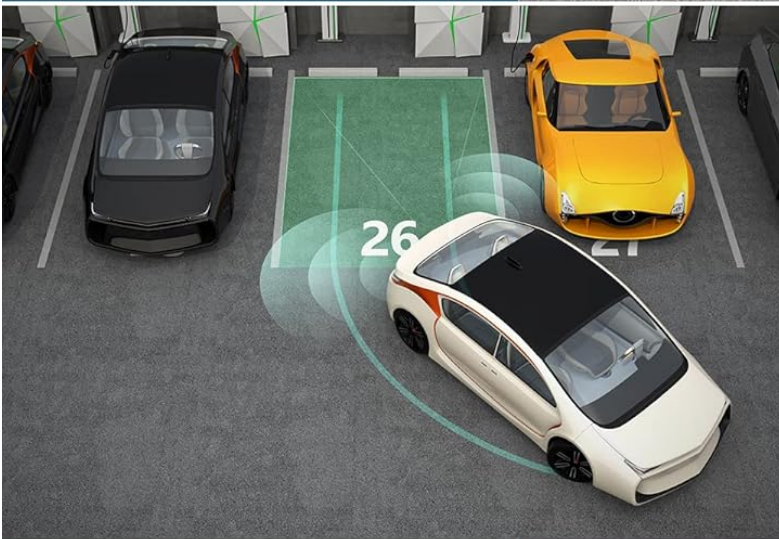
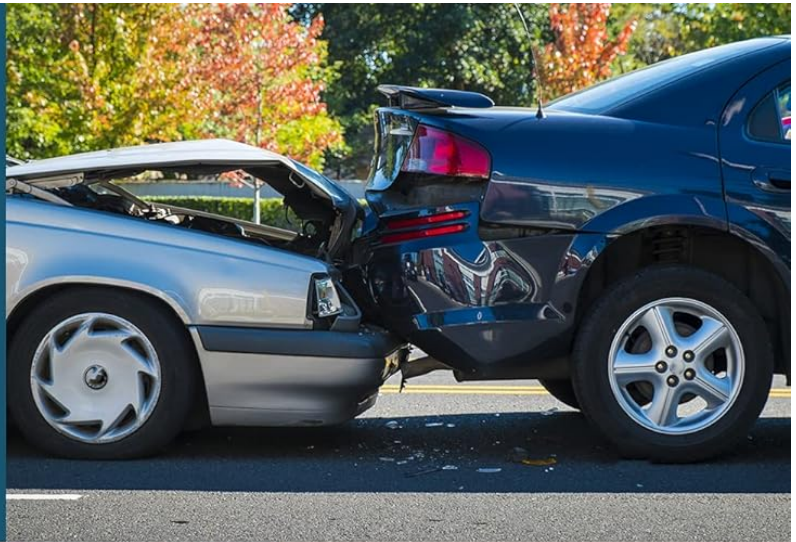
Figure 5.1: Three-channel recording capability.

This dash cam features a 3-channel system, simultaneously recording from the front, rear, and interior of your vehicle. The front camera records up to Full UHD 4K (3840x2160P), while the rear camera records at 1080P. The front camera offers a 170° wide-angle view, the built-in camera a 120° view, and the rear camera a 150° view, maximizing road coverage.

5.2. Loop Recording

G-Sensor & Emergency Lock

Built-in G-sensor for emergency locking the current file from being overwritten in case of collision



24 hours Parking Monitor

Includes motion detection and parking monitoring. Turns on automatic video recording when it detects a collision or shake

Loop Recording

Automatically overwrite the oldest video and save the current one when the card is full



Figure 5.2: Key features including Loop Recording.

The loop recording function ensures continuous recording. When the memory card is full, the system automatically overwrites the oldest unprotected files to make space for new recordings. This prevents the need for manual deletion of old footage.

5.3. G-Sensor & Emergency Lock

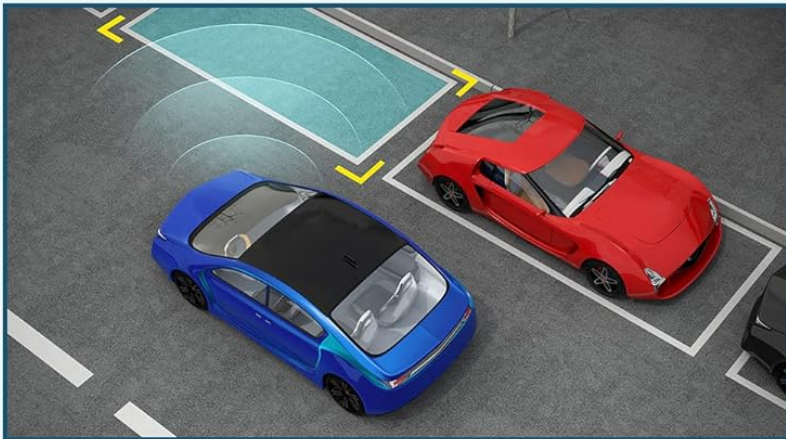
Equipped with a built-in G-sensor, the dash cam automatically detects sudden shakes or collisions. In such an event, the sensor will trigger the emergency lock feature, which protects the current video file from being overwritten by loop recording. This ensures critical accident footage is preserved as evidence.

5.4. 24-Hour Parking Mode

Safe parking triple recording camera



parking guideline
automatically



Parking Monitor



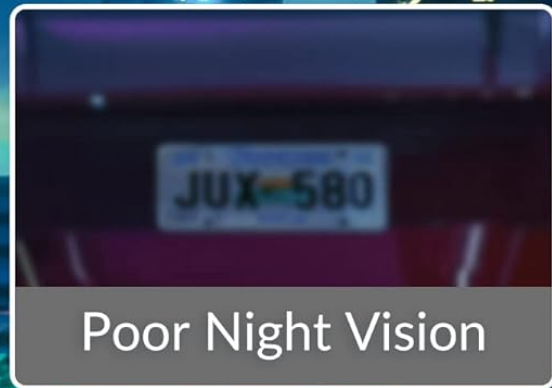
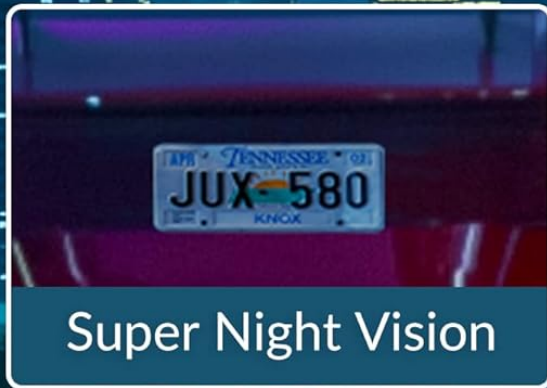
Collision Induction

Figure 5.3: Parking monitoring features.

When enabled, the 24-hour parking mode allows the camera to automatically start recording if motion or a collision is detected while your vehicle is parked. This feature provides continuous surveillance for your car. *Note: For 24-hour parking monitoring, a hardwire kit must be purchased separately.*

5.5. Super Night Vision 2.0

Super Night Vision 2.0



WDR automatically fills in chromatic aberrations in low-light environments for HD recording

Figure 5.4: Enhanced night vision capabilities.

The dash cam incorporates WDR/HDR technology and a 6-layer glass lens with F2.0 aperture to automatically fill in chromatic aberrations and provide clear footage even in low-light conditions, ensuring visibility of details like license plates at night.

5.6. User-Friendly 2.0-Inch IPS Display

The vibrant 2.0-inch IPS display allows for convenient review and management of your recordings directly on the dash cam. You can easily access your daily video footage and adjust settings as needed.

6. MAINTENANCE

- **Clean the Lenses:** Regularly clean the camera lenses with a soft, lint-free cloth to ensure clear video quality.
- **Memory Card Care:** Format the memory card periodically (e.g., once a month) within the dash cam's settings to maintain optimal performance and prevent data corruption.
- **Temperature:** Avoid exposing the dash cam to extreme temperatures for prolonged periods, as this can affect battery life and component integrity.
- **Firmware Updates:** Check the manufacturer's website for any available firmware updates to ensure your dash cam has the latest features and bug fixes.

7. TROUBLESHOOTING

Problem	Possible Cause	Solution
Dash cam does not power on.	No power supply; loose connection.	Check if the car charger is properly plugged into the 12V outlet and the dash cam. Ensure the vehicle's ignition is on.
Video footage is blurry or unclear.	Protective film still on lens; dirty lens; incorrect focus.	Remove any protective film. Clean the lens with a soft cloth. Ensure the lens is not obstructed.
Dash cam stops recording.	Memory card full; memory card error; power interruption.	Format the memory card. Try a different memory card. Check power connection stability.
G-sensor is too sensitive/not sensitive enough.	G-sensor sensitivity setting.	Adjust the G-sensor sensitivity in the dash cam's settings menu.

8. SPECIFICATIONS

Feature	Detail
Product Dimensions	3.12 x 1.23 x 2.56 inches
Item Weight	8.8 ounces
Item Model Number	Y15-BF6 DASH CAM
Batteries	1 Lithium Ion batteries required.
Connectivity Technology	USB
Special Feature	Built-In Microphone
Other Display Features	Wireless
Color	New Black
Manufacturer	lensuge
Orientation	Front and Rear and Inside

Feature	Detail
Vehicle Service Type	Bus, Car, Tractor, Truck
Video Capture Resolution	4K
Mounting Type	Dashboard Mount

9. WARRANTY AND SUPPORT

Your lensuge Dash Cam comes with a 1-year warranty from the date of purchase. In case of any product problems or defects, please contact our customer support team for assistance. We are available around the clock to provide help and offer replacement services for product defects and other issues.

For support, please refer to the contact information provided in your purchase documentation or visit the official lensuge website.

