



[Manuals.plus](#) /

› [NAMSTE](#) /

› NAMSTE Model 027 Smart Waterless Diffuser Instruction Manual

NAMSTE 027

NAMSTE Model 027 Smart Waterless Diffuser Instruction Manual

Your guide to optimal aroma diffusion for large spaces.

1. IMPORTANT SAFETY INFORMATION

Please read all safety instructions before operating the device.

- Avoid direct skin contact with undiluted essential oils.
- Keep out of reach of children and pets.
- Ensure proper ventilation during use.
- Use only essential oils specifically designed for cold-air diffusion systems.
- Do not disassemble or attempt to repair the device yourself. Contact customer support for assistance.
- Unplug the device before cleaning or refilling.

2. PRODUCT OVERVIEW

The NAMSTE Model 027 Smart Waterless Diffuser utilizes advanced cold-air diffusion technology to transform essential oils into ultra-fine dry nanoparticles, ensuring uniform scent distribution across large spaces up to 4,000 sq.ft. This intelligent aromatherapy device offers APP and touch control for personalized scent experiences without the need for water or heat.

EXTRA LARGE 27 OZ ESSENTIAL OIL BOTTLE NO NEED TO REFILL OILS FREQUENTLY



Image: The NAMSTE Model 027 Smart Waterless Diffuser, a sleek black device designed for large-space aroma diffusion.

Key Features:

- **Cold Air Diffusion System:** Transforms essential oils into ultra-fine dry nanoparticles for sustained, mess-free fragrance dispersion.
- **Large Capacity:** 800ml essential oil capacity, allowing up to 120 days of continuous operation without frequent refills.
- **Smart Control:** APP and touch screen interface for customizing run dates, specific times, mist intensity, working time, and intermittent time (5s-300s).
- **Versatile Installation:** Can be used as a floor stand, wall-mounted, or integrated into an existing HVAC system for whole-house scenting.
- **Wide Coverage:** Effectively diffuses aroma across spaces up to 4,000 sq.ft.
- **Safe & Natural:** Preserves the natural aromatic integrity of oils, safe for pets and children.

3. SETUP GUIDE

3.1 Unboxing and Components

Carefully remove all components from the packaging. Ensure you have the following:

- NAMSTE Model 027 Diffuser Unit
- Essential Oil Bottle (800ml)
- Magnetic Key
- Power Adapter
- HVAC Connection Tube (if applicable)
- Wall Mounting Bracket and Screws (if applicable)

COLD-AIR DIFFUSION TECHNOLOGY

No water, no mess



Image: The NAMSTE diffuser unit shown next to an essential oil bottle, illustrating its compact design and large capacity.

3.2 Filling the Essential Oil Bottle

1. Locate the magnetic key slot on the top of the diffuser unit.

2. Place the magnetic key over the lock icon and gently push down to release the essential oil bottle compartment.
3. Carefully remove the empty essential oil bottle.
4. Unscrew the cap from the essential oil bottle.
5. Fill the bottle with your desired essential oil (up to 800ml). Do not overfill.
6. Screw the cap back onto the bottle securely.
7. Insert the filled bottle back into the diffuser unit until it clicks into place.
8. Remove the magnetic key.



Image: A close-up of the diffuser showing the magnetic key being used to unlock and remove the essential oil bottle for refilling.

3.3 Power Connection

Connect the power adapter to the diffuser unit and then plug it into a standard electrical outlet.

3.4 Video Guide: Setting Up Your Diffuser

Your browser does not support the video tag.

Video: A step-by-step guide on how to set up your AromaPlan diffuser using the mobile application, including device selection and

4. OPERATING INSTRUCTIONS

4.1 Using the Mobile App

Download the "AromaPlanApp" from your device's app store. Ensure Bluetooth is enabled on your smartphone.

1. Open the AromaPlanApp and follow the on-screen instructions to add your NAMSTE Model 027 diffuser.
2. Select your diffuser model from the list of available devices.
3. Customize your scent schedule: Set start/end times, active days, and desired mist intensity (levels 1-9).
4. Create multiple schedules for different times of the day or week.
5. Monitor essential oil levels and device status directly from the app.

4.2 Touch Control Panel

The diffuser also features a touch screen for direct control:

- **Power Button:** Turn the device On/Off.
- **Set Button:** Access settings to adjust working mode, intensity, and fan speed.
- **Up/Down Arrows:** Navigate through settings and adjust values.
- **Display Screen:** Shows current time, working mode, and intensity level.

Compatible with HVAC



Let the fragrance easily reach every room through the air conditioning duct

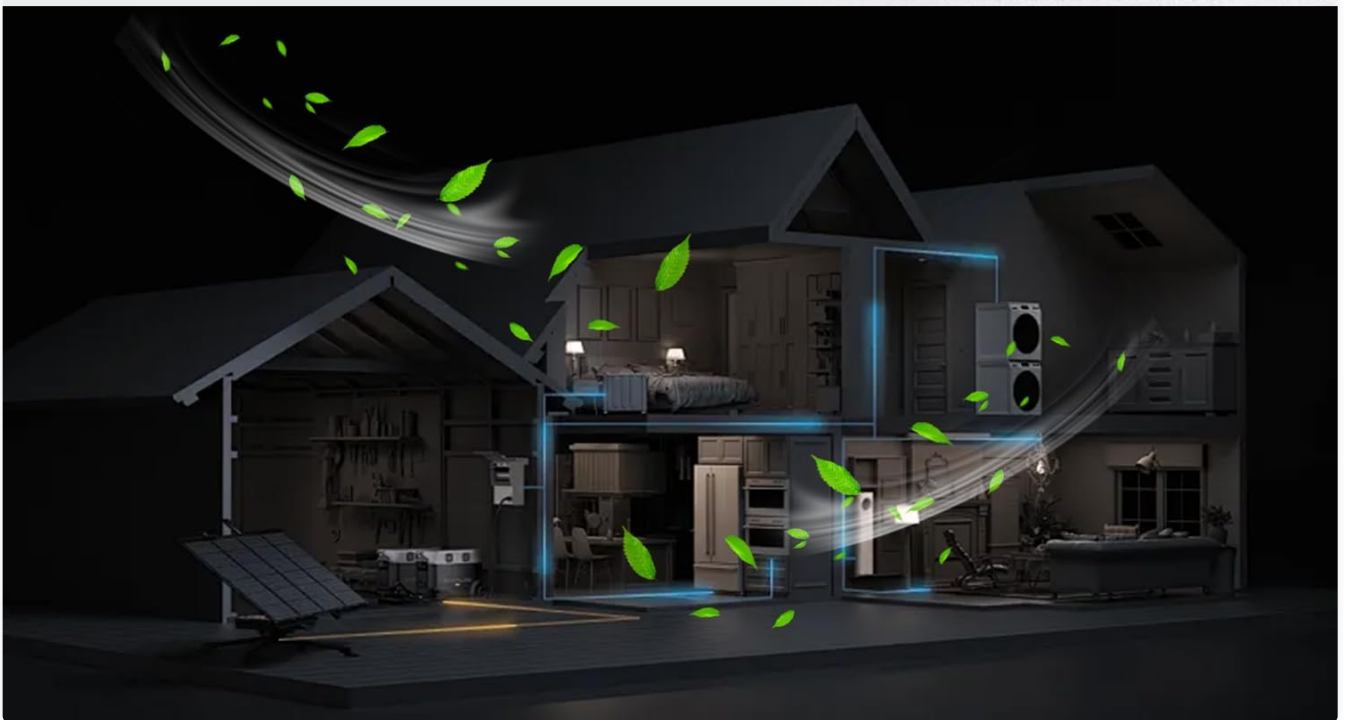


Image: The NAMSTE diffuser's touch control panel displaying settings, alongside a smartphone screen showing the corresponding mobile app interface for remote control.

4.3 Video Guide: Smart Waterless Diffuser Operation

Your browser does not support the video tag.

Video: An overview of the Smart Waterless Diffuser Machine, highlighting its features and operation for large spaces up to 4000 sq.ft.

5. INSTALLATION OPTIONS

The NAMSTE Model 027 diffuser offers flexible installation to suit various environments.

5.1 Freestanding or Wall-Mounted

- Place the diffuser on a flat, stable surface for freestanding use.

- For wall mounting, use the provided bracket and screws to secure the unit to a suitable wall. Ensure it is mounted at an appropriate height for optimal diffusion.

5.2 HVAC System Integration

For whole-house scenting, the diffuser can be connected to your existing HVAC system.

1. Consult a qualified HVAC technician for proper installation into your ductwork.
2. Use the provided HVAC connection tube to link the diffuser to the air return or supply duct.
3. Ensure the connection is secure and airtight to prevent leaks and maximize diffusion efficiency.

DESIGNED FOR

HOME | OFFICE | HOTEL | SPA | MALL

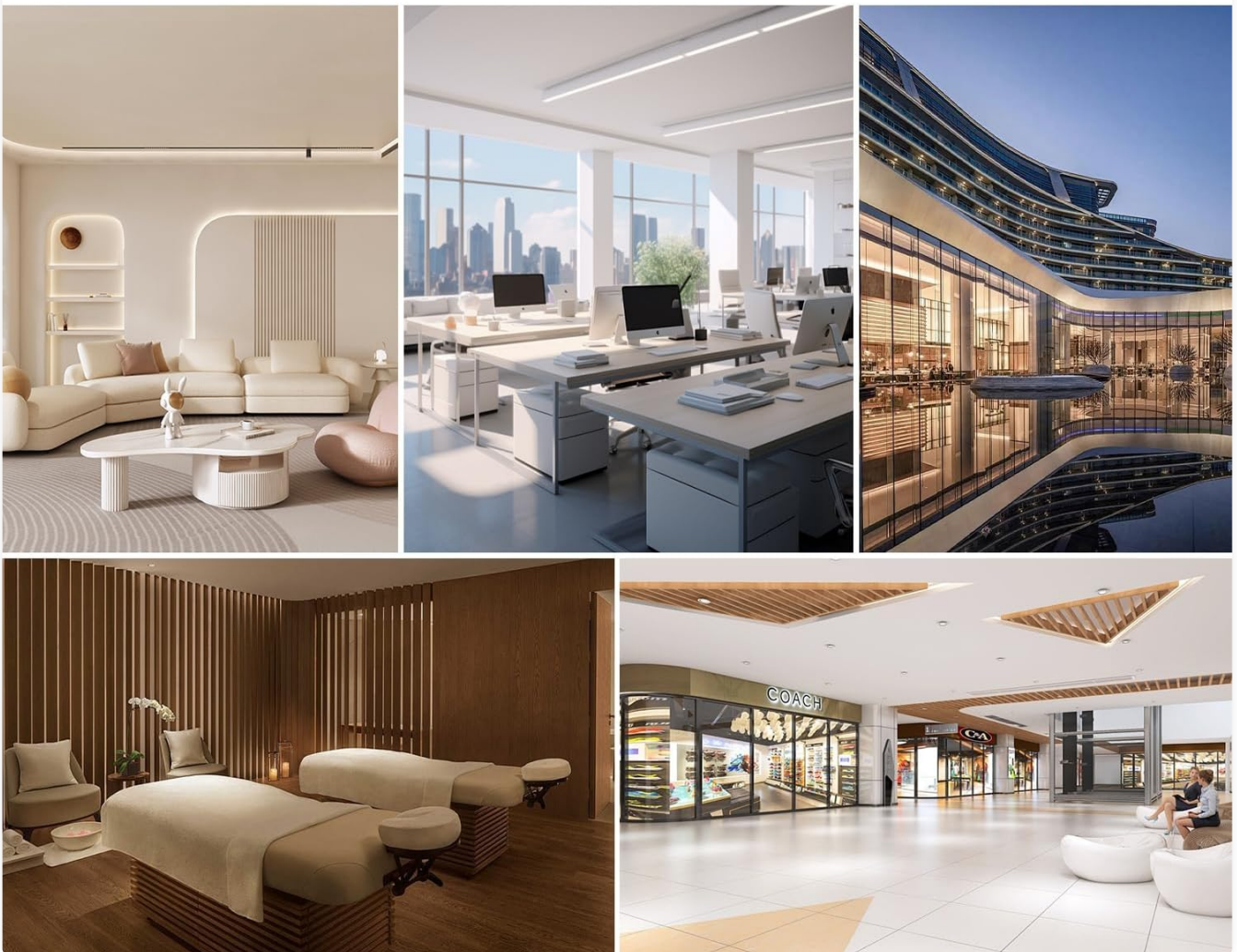


Image: Diagram illustrating the NAMSTE diffuser integrated with an HVAC system, showing fragrance distribution throughout a multi-room environment.

5.3 Video Guide: HVAC Diffuser Scent System

Your browser does not support the video tag.

Video: A demonstration of the NAMSTE Smart Waterless Diffuser's HVAC integration capabilities, showcasing how it can scent an entire home or commercial space.

6. MAINTENANCE

6.1 Cleaning the Essential Oil Bottle

Regular cleaning ensures optimal performance and prevents oil residue buildup.

1. Unplug the diffuser unit.
2. Remove the essential oil bottle as described in Section 3.2.
3. Empty any remaining essential oil.
4. Fill the bottle with rubbing alcohol (isopropyl alcohol) and reattach the atomizer head.
5. Place the bottle back into the diffuser unit.
6. Run the diffuser on a low setting for 15-30 minutes to clean the internal components.
7. Remove the bottle, discard the alcohol, and allow the bottle and atomizer to air dry completely before refilling with essential oil.

6.2 Video Guide: Cleaning the Inner Bottle

Your browser does not support the video tag.

Video: Detailed instructions on how to clean the inner bottle of the diffuser machine to maintain optimal performance and switch between different essential oils.

6.3 General Care

- Wipe the exterior of the diffuser with a soft, dry cloth.
- Do not use abrasive cleaners or solvents.
- Keep the diffuser away from direct sunlight and heat sources.

7. TROUBLESHOOTING

Problem	Possible Cause	Solution
No scent or weak scent	Essential oil bottle empty or low. Clogged atomizer. Incorrect intensity setting.	Refill essential oil. Clean the atomizer (see Maintenance). Increase intensity setting via app or touch panel.
Device not turning on	Power adapter not connected. Power outlet issue.	Ensure power adapter is securely plugged in. Test the outlet with another device.
App not connecting to diffuser	Bluetooth/Wi-Fi off. Diffuser out of range. App not updated.	Ensure Bluetooth/Wi-Fi is on. Move closer to the diffuser. Update the AromaPlanApp to the latest version.
Oil leakage	Essential oil bottle not properly sealed. Damaged bottle or atomizer.	Ensure bottle cap is tightly screwed. Inspect bottle and atomizer for damage; replace if necessary.

If you encounter issues not listed here or if troubleshooting steps do not resolve the problem, please contact

8. SPECIFICATIONS

Brand: NAMSTE

Model: 027

Color: Metal Black

Coverage Area: Up to 4000 Square Feet

Product Dimensions: 9.2"L x 7.2"W x 13.5"H

Essential Oil Capacity: 800ml

Mounting Type: Floor mount, Wall mount, HVAC system

Control: APP & Touch Control

Diffusion Technology: Cold Air Diffusion (Waterless)

9. WARRANTY AND SUPPORT

NAMSTE products are designed for quality and durability. For warranty information, please refer to the warranty card included in your product packaging or visit the official NAMSTE website.

For technical support, troubleshooting assistance, or any inquiries regarding your NAMSTE Model 027 Smart Waterless Diffuser, please contact our customer service team:

Website: www.namste.com (example, replace with actual if available)

Email: support@namste.com (example, replace with actual if available)

Phone: 1-800-XXX-XXXX (example, replace with actual if available)

Our dedicated support team is available to assist you with any questions or concerns.