

MMS MS380W

MMS MS380W Mini Wheel Skid Steer Loader Instruction Manual

Model: MS380W

1. INTRODUCTION AND OVERVIEW

The MMS MS380W Mini Wheel Skid Steer Loader is a compact and versatile piece of equipment designed for various tasks in confined spaces such as courtyards, warehouses, farms, and construction sites. Its small size and maneuverability enhance operational efficiency in complex environments.

Key features include:

- **Compact and Flexible Design:** Allows for easy operation in small areas.
- **Foldable Foot Pedal:** Enhances operator comfort during long work periods and saves storage space.
- **Multi-Purpose Capability:** The detachable loader bucket can be interchanged with various sliding loader attachments to suit different operational needs, including drilling, excavation, pruning, and mixing.
- **Vacuum Type Tires:** High-density rubber with a deep textured grip ensures stability on complex road surfaces and allows for a safe climbing angle of up to 30 degrees.
- **Independent Dual Hydraulic Circuit:** Separates forward drive and boom control, enabling simultaneous lifting/flipping of the bucket while moving, which improves composite action smoothness and reduces maintenance costs.

2. SAFETY INFORMATION

Operating heavy machinery requires strict adherence to safety protocols to prevent injury or damage. Read and understand all safety warnings before operating the MMS MS380W.

- Always wear appropriate personal protective equipment (PPE), including hard hat, safety glasses, hearing protection, and steel-toed boots.
- Ensure the work area is clear of bystanders, especially children and pets.
- Inspect the machine before each use for any signs of damage, leaks, or loose components.
- Never operate the loader under the influence of alcohol or drugs.
- Maintain a safe distance from slopes, trenches, and unstable ground.
- Lower the bucket to the ground and turn off the engine before leaving the operator's position.

- Familiarize yourself with all controls and emergency shutdown procedures.

3. PACKAGE CONTENTS

Upon receiving your MMS MS380W Mini Wheel Skid Steer Loader, please verify that all components are present and undamaged.

- MMS MS380W Mini Wheel Skid Steer Loader Unit
- Wide Bucket Toolbox (includes standard bucket attachment)
- Operator's Manual (this document)

If any items are missing or damaged, contact your supplier immediately.

4. SETUP AND ASSEMBLY

The MMS MS380W is largely pre-assembled. Follow these steps for initial setup:

1. **Unpacking:** Carefully remove the loader from its packaging. The unit may be packed in a wooden crate and require a forklift for safe unloading.
2. **Initial Inspection:** Conduct a thorough visual inspection for any shipping damage. Check all hoses, connections, and structural components.
3. **Attachment Installation:** Attach the standard bucket or any other desired attachment to the loader's quick-attach system. Ensure all pins and locking mechanisms are securely fastened. Refer to the image below for hydraulic connections.
4. **Fluid Levels:** Check engine oil, hydraulic fluid, and fuel levels. Refer to the Specifications section for recommended fluid types and capacities.



Figure 4.1: MMS MS380W Mini Wheel Skid Steer Loader with standard bucket.

HIGHLY MOBILE MULTI ATTACHMENT COMPATIBILITY

Full hydraulic control, travelling is controlled by two handles. Works with Various Attachments including Buckets, Forks, Augers, Trenchers, and More!



Figure 4.2: Hydraulic connections for multi-attachment compatibility.

5. OPERATING INSTRUCTIONS

Before operating, ensure you have read and understood the safety information.

5.1 Controls Overview

The MMS MS380W features a user-friendly control console. Familiarize yourself with the functions of each lever, button, and gauge.



Figure 5.1: Operator control console.

5.2 Starting the Engine

1. Ensure the parking brake is engaged.
2. Insert the key into the ignition and turn it to the 'ON' position.
3. Turn the key further to the 'START' position. Release once the engine starts.
4. Allow the engine to warm up for a few minutes before operation.

5.3 Driving and Maneuvering

The loader utilizes an independent dual hydraulic circuit for precise control.

- Use the left joystick to control the forward/reverse movement and steering.
- Use the right joystick to control the lift arm and bucket functions (raise, lower, dump, curl).
- The foldable foot pedal provides a stable platform for the operator, reducing fatigue during extended use.
- The vacuum-type tires provide excellent traction, allowing the loader to handle inclines up to 30 degrees safely.



Figure 5.2: Loader demonstrating climbing capability.

DETAIL DISPLAY

**FASTER WALKING
SPEED**



**BUCKET CAPACITY
0.15M³**

**FOLDABLE
FOOT PEDAL**



Figure 5.3: Foldable foot pedal and bucket detail.

5.4 Using Attachments

The MMS MS380W is compatible with a variety of attachments. Ensure the correct attachment is securely mounted and hydraulic lines are properly connected for optimal performance.

ADAPTIVE ATTACHMENT

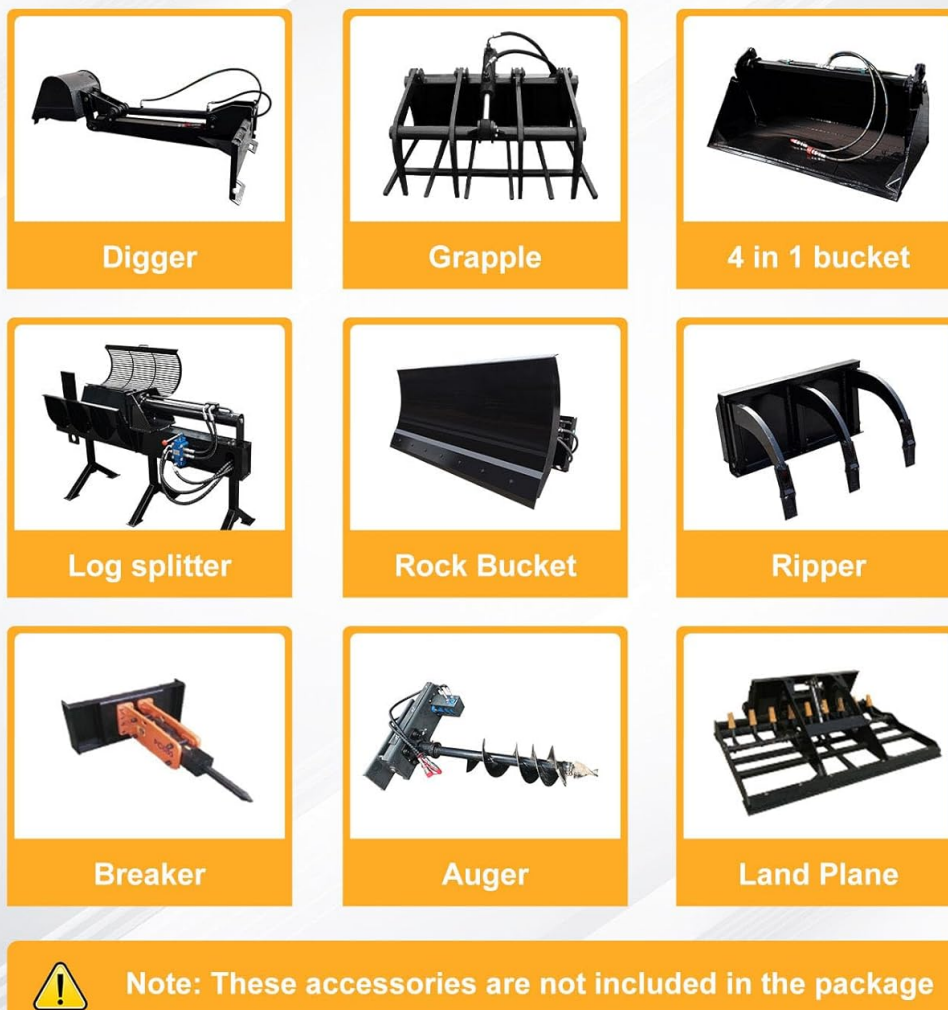


Figure 5.4: Examples of adaptive attachments (sold separately).

5.5 Stopping the Engine

1. Lower the bucket or attachment to the ground.
2. Engage the parking brake.
3. Turn the ignition key to the 'OFF' position.
4. Remove the key to prevent unauthorized use.

6. MAINTENANCE

Regular maintenance is crucial for the longevity and safe operation of your MMS MS380W.

6.1 Daily Checks

- Check engine oil level.
- Inspect hydraulic fluid level.
- Verify tire pressure and condition.
- Check for any fluid leaks.

- Ensure all lights and safety features are operational.
- Clean debris from the engine compartment and radiator.

6.2 Scheduled Maintenance

Refer to the service schedule in the full owner's manual for detailed maintenance intervals, including:

- Engine oil and filter replacement.
- Hydraulic fluid and filter replacement.
- Air filter inspection and replacement.
- Greasing pivot points and moving parts.
- Battery inspection and cleaning.

7. TROUBLESHOOTING

This section provides solutions to common operational issues. For complex problems, contact qualified service personnel.

Problem	Possible Cause	Solution
Engine does not start	Low fuel, dead battery, faulty ignition	Check fuel level, charge/replace battery, inspect ignition system
Loss of hydraulic power	Low hydraulic fluid, clogged filter, pump issue	Check fluid level, replace filter, contact service
Loader moves slowly or weakly	Engine underperforming, hydraulic pressure low	Check engine performance, inspect hydraulic system
Excessive vibration or noise	Loose components, worn parts, engine issue	Inspect for loose parts, check engine mounts, contact service

8. SPECIFICATIONS

Detailed technical specifications for the MMS MS380W Mini Wheel Skid Steer Loader.



MS380 LOADER

Engine	Rato R740-1
Rated Power(Kw)	16Kw/3600rpm
Rotating Speed (rpm)	3600
Noise(Db)	<95
Pressure (Mpa)	0-17Mpa
Flow Rate	0-21.6L
Operating Load Lifting Force	662 ib
Bucket Capacity	0.15m³
Max Lifting Force	838 ib
Travel Speed	0-4.5Km/h
Operating Weight	1764 ib
Oil	Gasoline

Max Working Height	83.5 inch
Max Pin Height	74.4 inch
Max Dumping Height	57.7 inch
Max Dumping Distance	19 inch
Max Dumping Angle	32°
Total Height	51.8 inch
Ground Clearance	4.5 inch
Wheel Base	26.8 inch
Overall Lengthwithout Bucket	65 inch
Total Width	44 inch
Bucket width	45.3 inch
Total Length with Bucket	82 inch

Figure 8.1: MMS MS380W Loader specifications overview.

Specification	Value
Manufacturer	MMS
Model	MMS 380W
Item Weight	1800 pounds
Package Dimensions	78 x 65 x 55 inches
Wattage	16 KW
Engine Rated Power	16KW/3600rpm
Rotating Speed (rpm)	3600
Noise (Db)	<95
Pressure (Mpa)	0-17Mpa
Flow Rate	0-21L

Specification	Value
Operating Load Lifting Force	662 lb
Bucket Capacity	0.15m ³
Max Lifting Force	838 lb
Travel Speed	0-4.5KM/h
Operating Weight	1764 lb
Fuel Type	Gasoline
Max Working Height	83.5 inch
Max Pin Height	74.4 inch
Max Dumping Height	57.7 inch
Max Dumping Angle	32°
Total Height	51.8 inch
Ground Clearance	4.5 inch
Wheel Base	26.8 inch
Overall Length (without Bucket)	65 inch
Total Width	44 inch
Bucket Width	45.3 inch
Total Length (with Bucket)	82 inch

9. WARRANTY AND SUPPORT

MMS is committed to providing quality products and support.

9.1 Protection Plans

Extended protection plans are available for your MMS MS380W Mini Wheel Skid Steer Loader:

- **3-Year Protection Plan:** Provides extended coverage for your equipment.
- **4-Year Protection Plan:** Offers comprehensive long-term protection.

For details on coverage and terms, please refer to the specific protection plan documentation.

9.2 Customer Support

For technical assistance, parts, or service inquiries, please contact MMS Customer Support. Our professional sales and maintenance teams are available to provide consultation and after-sales support.

Seller: MMS Excavator


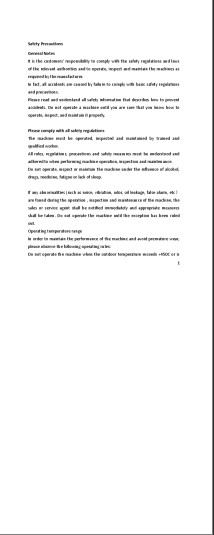

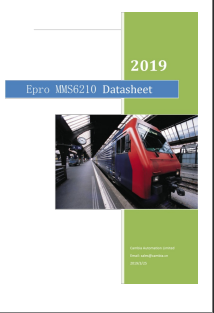
Returns: 30-day easy returns policy applies.

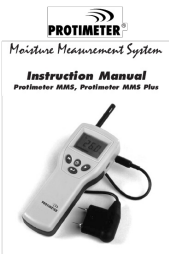

10. OFFICIAL PRODUCT VIDEOS

No relevant official product videos from the seller were found in the provided data to embed in this manual.

© 2025 MMS. All rights reserved.

Related Documents - MS380W

	<p>Grundfos MS, MMS Submersible Motors: Installation and Operating Instructions</p> <p>Comprehensive installation and operating instructions for Grundfos MS and MMS submersible motors, covering delivery, storage, general description, preparation, electrical connection, installation, maintenance, fault finding, and cable sizing.</p>
	<p>MS08 Mini Compact Excavator: Operation and Safety Manual</p> <p>Comprehensive guide for the MS08 Mini Compact Excavator from mms industry, detailing safety precautions, operational controls, maintenance procedures, and technical specifications for safe and efficient use.</p>
	<p>Autonomic MMS Series Multi-Source Music Streamer User Manual</p> <p>Comprehensive user manual for the Autonomic MMS-1e, MMS-3e, and MMS-5e Multi-Source Music Streamers, detailing setup, configuration, features, streaming service integration, and specifications.</p>
	<p>Epro MMS6210 Dual Channel Shaft Displacement Monitor Datasheet</p> <p>Datasheet for the Epro MMS6210 Dual Channel Shaft Displacement Monitor, detailing its technical specifications, applications, and system integration for machine monitoring.</p>

 <p>The image shows the cover of the Protimeter MMS Moisture Measurement System Instruction Manual. It features the Protimeter logo at the top, followed by the text 'Moisture Measurement System' and 'Instruction Manual'. Below this, it specifies 'Protimeter MMS, Protimeter MMS Plus'. The central image is a handheld moisture meter with a probe and a cable.</p>	<p>Protimeter MMS Moisture Measurement System Instruction Manual</p> <p>Comprehensive instruction manual for the Protimeter MMS and MMS Plus moisture measurement systems, detailing operation modes, diagnostics, and maintenance for building moisture assessment.</p>
 <p>The image shows the cover of the HT-002LIM GPRS/MMS Digital Infrared Trail Camera User Manual. It features a small image of the camera unit, which is a rugged, boxy device with a lens and various ports. The text 'HT-002LIM GPRS/MMS Digital Infrared Trail Camera' is visible at the top, and 'User Manual' is at the bottom.</p>	<p>HT-002LIM GPRS/MMS Digital Infrared Trail Camera User Manual</p> <p>User manual for the HT-002LIM GPRS/MMS Digital Infrared Trail Camera, detailing its features, operations, settings, and technical specifications.</p>