

Monster AC520

Monster Open Ear AC520 Headphones User Manual

Model: AC520 | Brand: Monster

INTRODUCTION

The Monster Open Ear AC520 Headphones are designed to provide a comfortable and high-quality audio experience. These wireless earbuds feature an open-ear design, allowing for situational awareness while enjoying your audio. Equipped with advanced Bluetooth 6.0 technology, they offer stable connectivity and efficient power consumption. The headphones also incorporate Environmental Noise Cancellation (ENC) for clear calls and are built with IPX6 water resistance, making them suitable for various activities.

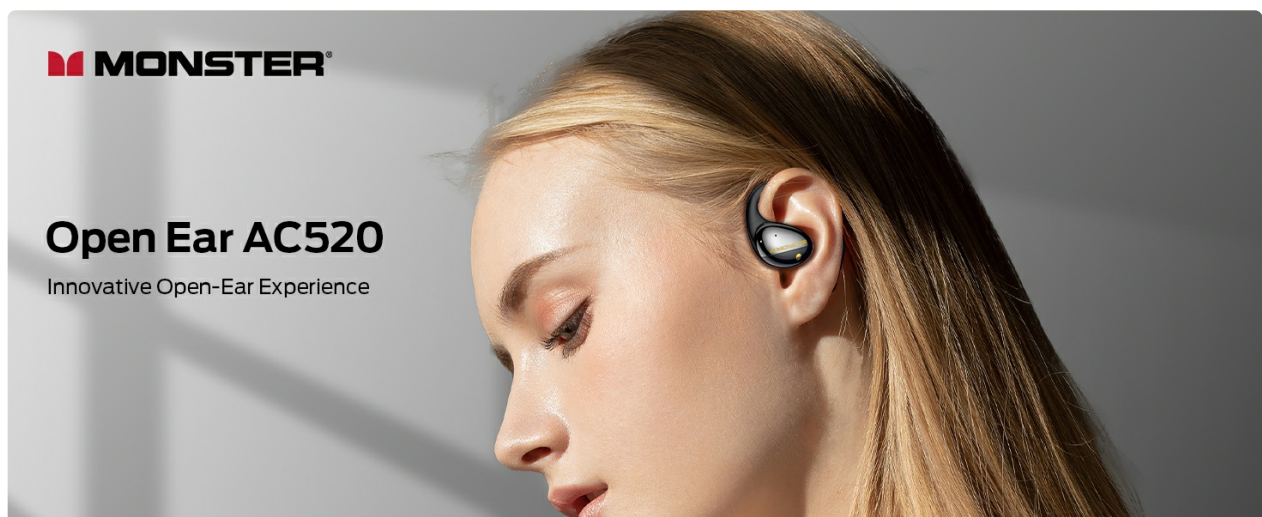


Image: Overview of the Monster Open Ear AC520 Headphones, highlighting their innovative open-ear design.

WHAT'S IN THE BOX

- Monster Open Ear AC520 Headphones (x2)
- Portable Lanyard (x1)
- Charging Case (x1)
- Type-C Charging Cable (x1)

- User Manual (x1)



Image: All items included in the product packaging: earbuds, charging case, lanyard, USB-C cable, and user manual.

SETUP

Initial Charging

Before first use, fully charge the headphones and the charging case. Connect the provided Type-C charging cable to the charging port on the case and a power source. The indicator lights on the case will show the charging status. A full charge for the case provides up to 24 hours of extended playtime for the earbuds.

Bluetooth Pairing

1. Ensure the headphones are fully charged.
2. Open the charging case. The headphones will automatically enter pairing mode.
3. On your device (smartphone, tablet, etc.), enable Bluetooth and search for available devices.
4. Select "Monster AC520" from the list of devices to connect.
5. Once connected, a voice prompt will confirm successful pairing.

ENDURING POWER



Image: An illustration detailing the battery life: 1 hour charging time for the case, 7 hours of single charge playtime for the earbuds, and a total of 24 hours with the charging case.

How to Wear

The Monster Open Ear AC520 headphones feature a clip-on design for secure and comfortable placement without entering the ear canal.

1. Take out the earbuds from the case.
2. Place the earhooks behind your ears for a secure fit.
3. Lightly twist the earbuds until they feel comfortable and secure.

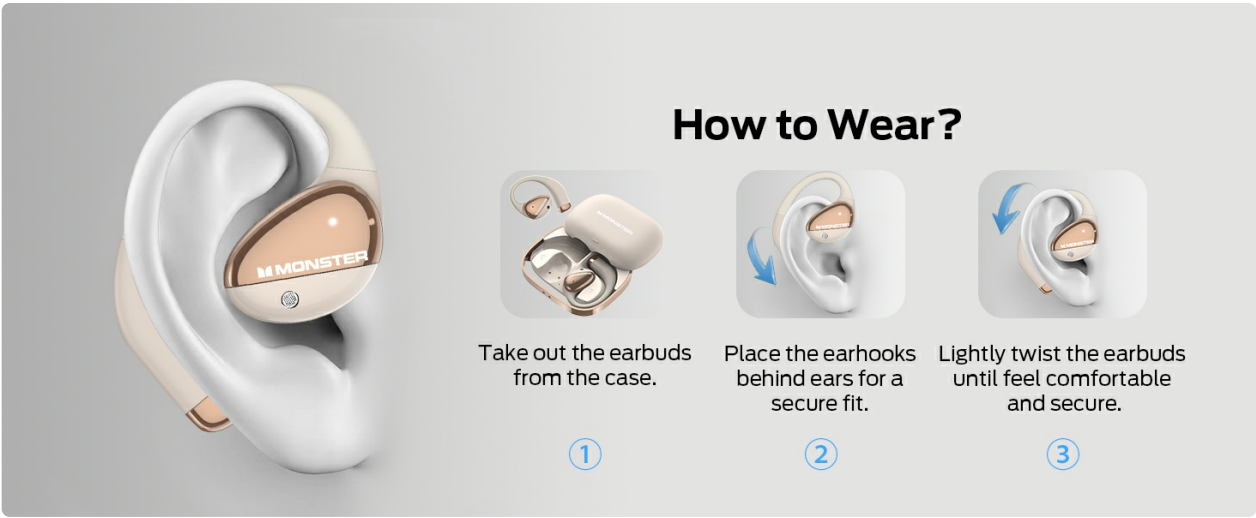


Image: Step-by-step guide on correctly placing the open-ear headphones for optimal comfort and security.

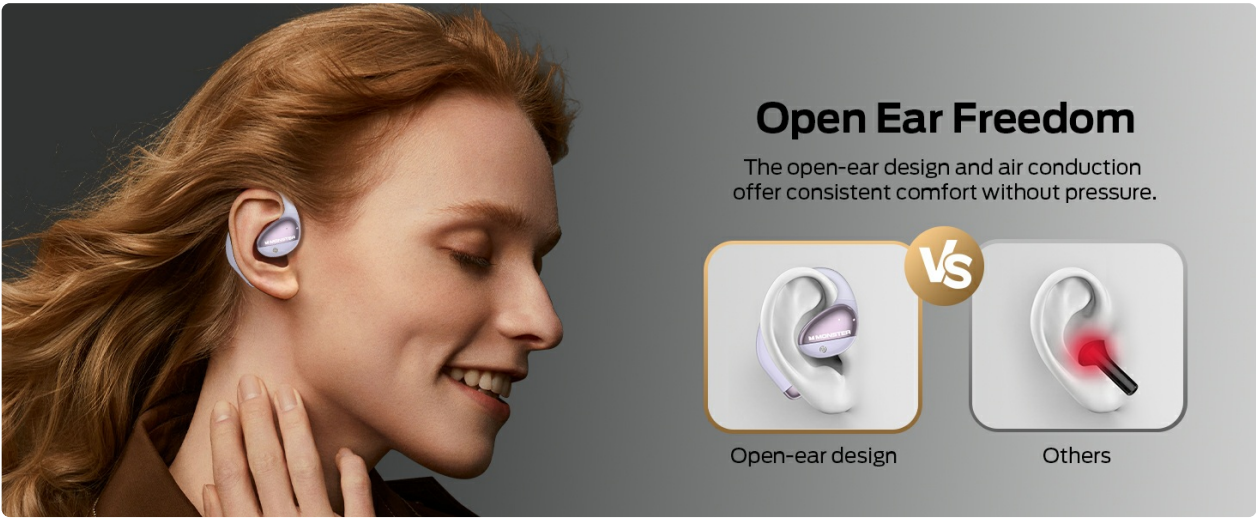


Image: A visual comparison highlighting the "Open Ear Freedom" design of the AC520 headphones, which offers consistent comfort without pressure, unlike traditional in-ear earbuds.

OPERATING CONTROLS

The Monster Open Ear AC520 headphones feature intuitive touch controls for managing your audio and calls.



Image: A detailed guide to the touch controls for playback, call management, and voice assistant activation.

- **Play/Pause:** Click x2 (L/R)

- **Voice Assistant:** Hold x2s (L/R)
- **Previous Song:** Click x3 (L)
- **Next Song:** Click x3 (R)
- **Answer Call:** Click x2 (L/R)
- **Hang Up Call:** Hold x2s (L/R)
- **Volume Down:** Click x1 (L)
- **Volume Up:** Click x1 (R)

SOUND QUALITY

Experience the impressive audio performance of the Monster Open Ear AC520 headphones. Featuring advanced Monster HiFi sound technology, these open-ear headphones deliver rich, dynamic sound with deep bass and crystal-clear highs.



Image: An exploded view illustrating the 14.5mm speaker and acoustic cavity structure responsible for the dynamic audio of the Monster Open Ear AC520 headphones.

WATER RESISTANCE

With an IPX6 water resistance rating, the Monster wireless earbuds are built to withstand sweat and rain. This makes them ideal for workouts, outdoor activities, and daily commutes, allowing you to stay focused without worrying about water damage.



Image: A user wearing the Monster Open Ear AC520 headphones during physical activity, emphasizing their IPX6 water resistance for protection against sweat and light rain.

SPECIFICATIONS

Model Name	MH22232
Connectivity Technology	Wireless (Bluetooth 6.0)
Ear Placement	Open Ear
Water Resistance Level	IPX6 Water Resistant

Battery Average Life (Earbuds)	8 Hours
Total Playtime (with Charging Case)	24 Hours
Control Type	Touch Control
Included Components	Charging Case, Monster Open Ear AC520 Headphones, Type-C Charging Cable, User Manual

TROUBLESHOOTING

No Sound/Cannot Pair

- Ensure both earbuds and the charging case are fully charged.
- Make sure Bluetooth is enabled on your device and the headphones are in pairing mode.
- Try resetting the headphones by placing them back in the case, closing the lid, and then reopening it.
- If issues persist, try forgetting the device from your phone's Bluetooth settings and re-pairing.

Charging Issues







- Verify the charging cable is securely connected to both the case and the power source.
- Ensure the charging contacts on the earbuds and inside the case are clean and free of debris.
- Try using a different Type-C charging cable and power adapter.

MAINTENANCE

- **Cleaning:** Regularly clean the earbuds and charging case with a soft, dry cloth. Avoid using harsh chemicals or abrasive materials.
- **Storage:** When not in use, store the headphones in their charging case to protect them from dust and damage.
- **Battery Care:** To prolong battery life, avoid fully discharging the headphones frequently. Charge them regularly, even if not in constant use.

WARRANTY AND SUPPORT

For warranty information, technical support, or any product-related inquiries, please refer to the official Monster website or contact their customer service directly. Keep your proof of purchase for warranty claims.

	Monster Open Ear AC520 Quick Start Guide Quick start guide for Monster Open Ear AC520 wireless headphones, covering product overview, charging, pairing, wearing, operation, LED indicators, and FCC compliance.
	Monster Open Ear AC225 Bluetooth Headphones Quick Start Guide A concise guide to setting up and using your Monster Open Ear AC225 Bluetooth Headphones, covering charging, pairing, wearing, and basic operations.
	Monster Aria Free Quick Start Guide - Wireless Open Ear Headphones Get started quickly with the Monster Aria Free open-ear wireless headphones. This guide covers charging, pairing, controls, and wearing instructions for model MH22134.
	Monster MH22241 Bluetooth Headphones Quick Start Guide Quick start guide for Monster MH22241 Bluetooth Headphones, covering setup, pairing, operation, and indicator lights. Learn how to use your Monster Open Ear AC390 earbuds.
	Monster Open Ear AC210 Bluetooth Headphones Quick Start Guide User guide for Monster Open Ear AC210 Bluetooth headphones, covering setup, pairing, controls, and troubleshooting. Features include touch controls, voice assistant, and single-earphone mode.
	Monster Open Ear AC600 Bluetooth Headphones Quick Start Guide A concise guide to setting up and using your Monster Open Ear AC600 Bluetooth headphones, including pairing, controls, and charging.

Documents - Monster – AC520

no relevant documents