

## Monster AC520

# Monster Open Ear AC520 Headphones User Manual

Model: AC520

## INTRODUCTION

This manual provides comprehensive instructions for the Monster Open Ear AC520 Headphones. Please read this manual carefully before using the product to ensure proper operation and to maximize your listening experience.

## PACKAGE CONTENTS

Verify that all items are present in the package:

- Monster Open Ear AC520 Headphones x 1 pair
- Charging Case x 1
- Type-C Charging Cable x 1
- User Manual x 1
- Portable Lanyard x 1

## How to Control?



Click×2  
Play/Pause  
(L / R)



Hold×2s  
Voice Assistant  
(L / R)



Click×3  
Previous  
Song (L)



Click×3  
Next  
Song (R)



Click×2  
Answer  
(L / R)



Hold×2s  
Hang Up  
(L / R)



Click×1  
Volume  
Down (L)



Click×1  
Volume  
Up (R)



Image: The package contents include the headphones, charging case, Type-C cable, user manual, and a portable lanyard.

## SETUP

## 1. Charging the Headphones and Case

Before first use, fully charge the headphones and the charging case.

- Connect the provided Type-C charging cable to the charging case and a USB power source.
- The indicator lights on the case will show charging status.
- Place the headphones into the charging case to charge them.
- A full charge provides approximately 8 hours of listening time, with the charging case extending total playtime to 24 hours.



Image: Illustration showing 1 hour charging time, 7 hours single charge playtime, and 24 hours total playtime with the charging case.

## 2. Pairing with a Bluetooth Device

1. Ensure the headphones are charged.
2. Open the charging case. The headphones will automatically enter pairing mode (indicator lights may flash).
3. On your device (smartphone, tablet, computer), enable Bluetooth.
4. Search for "Monster AC520" in the list of available Bluetooth devices.
5. Select "Monster AC520" to connect. Once connected, a voice prompt will confirm successful pairing.

**Note:** The headphones are equipped with Bluetooth 6.0 for a stable and low-latency connection.



Image: Visual representation of Bluetooth 6.0 technology and the voice assistant feature.

## OPERATING INSTRUCTIONS

### Wearing the Headphones

The Monster Open Ear AC520 headphones feature an open-ear design for comfort and situational awareness.

1. Take the earbuds out from the charging case.
2. Place the earhooks behind your ears.
3. Lightly twist the earbuds until they feel comfortable and secure.



Image: Step-by-step guide on correctly wearing the open-ear headphones for a secure and comfortable fit.



Image: Visual comparison highlighting the comfort and freedom of the open-ear design compared to in-ear alternatives.

### Touch Controls

The headphones feature touch-sensitive controls on each earbud.

**Play/Pause:** Double-click (L/R)

**Voice Assistant:** Hold for 2 seconds (L/R)

**Previous Song:** Triple-click (L)

**Next Song:** Triple-click (R)

**Answer Call:** Double-click (L/R)

**Hang Up Call:** Hold for 2 seconds (L/R)

**Volume Down:** Single-click (L)

**Volume Up:** Single-click (R)



## All-Day Comfort

The materials used in the open-ear earbuds are ergonomically designed and the ultra-soft silicone cushions provide unrivalled comfort.

Image: Detailed diagram illustrating the touch control functions for music playback, calls, and voice assistant.

## Call Functionality

The headphones support clear calls with ENC (Environmental Noise Cancellation) technology.

- **Answering Calls:** Double-click either earbud.
- **Ending Calls:** Hold either earbud for 2 seconds.
- **Rejecting Calls:** Hold either earbud for 2 seconds when an incoming call is present.



## Fast Charging and Long Playtime

Powerful battery for extended playback. Enjoy uninterrupted music without frequent recharges

1H

Charging Time

7H

Single Charge

24H

Charging Case

Image: Visual representation of how AI noise reduction minimizes audio distractions during calls, showing 'Before' and 'After' sound wave comparisons.

## MAINTENANCE

### Cleaning

- Wipe the headphones and charging case with a soft, dry, lint-free cloth.
- Do not use abrasive cleaners, alcohol, or chemical solvents.
- Ensure charging contacts are clean and dry.



Storage

- Store the headphones in their charging case when not in use to protect them and keep them charged.
- Avoid extreme temperatures and high humidity.

Water Resistance

The headphones are IPX6 water-resistant, meaning they can withstand sweat and light rain. They are not designed for submersion in water.

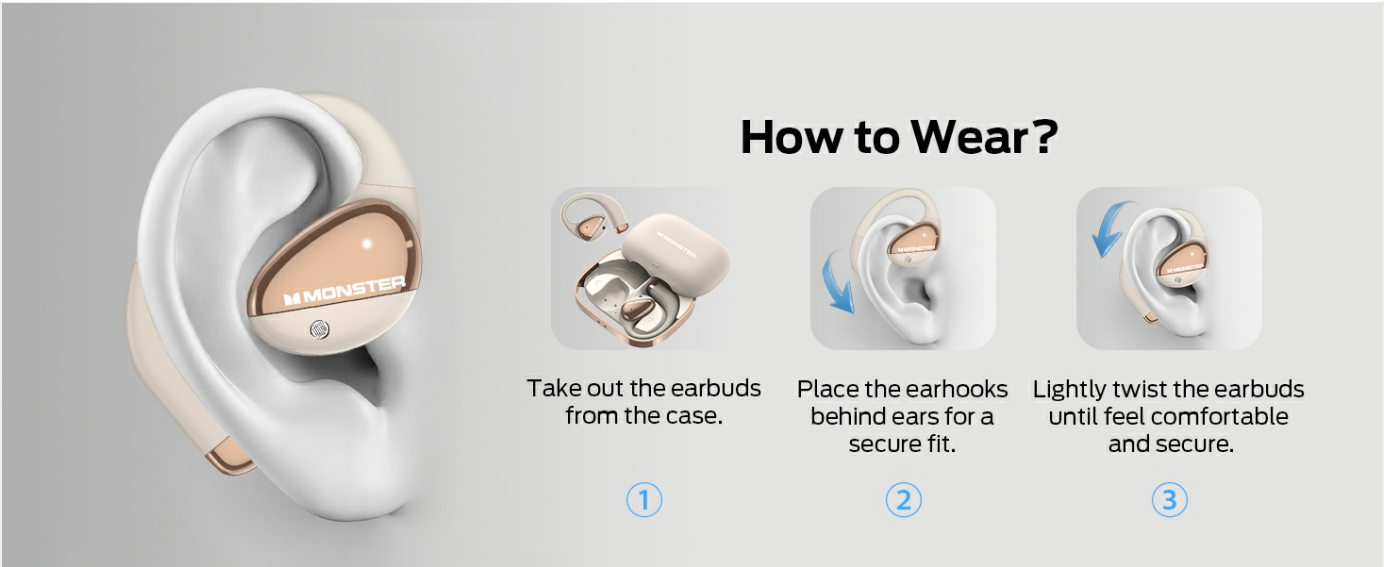


Image: Visual indicating the IPX6 water resistance, showing water splashing on the headphones.

TROUBLESHOOTING

Problem	Solution
Headphones do not turn on.	Ensure the headphones and charging case are fully charged. Place headphones back in the case and remove them again.
Cannot pair with device.	<ul style="list-style-type: none"><li>• Ensure Bluetooth is enabled on your device.</li><li>• Make sure the headphones are in pairing mode (indicator lights flashing).</li><li>• Forget "Monster AC520" from your device's Bluetooth list and try pairing again.</li><li>• Move closer to your device.</li></ul>
No sound or low volume.	<ul style="list-style-type: none"><li>• Adjust volume on both the headphones and your connected device.</li><li>• Ensure headphones are properly connected to your device.</li><li>• Check for obstructions or debris in the speaker area.</li></ul>
Intermittent connection.	<ul style="list-style-type: none"><li>• Move closer to your device and away from potential interference sources (e.g., Wi-Fi routers, other Bluetooth devices).</li><li>• Ensure headphones are fully charged.</li></ul>

SPECIFICATIONS

Feature	Detail
---------	--------

Feature	Detail
Model Name	AC520
Connectivity	Bluetooth 6.0
Ear Placement	Open Ear
Playtime (Single Charge)	Up to 8 hours
Total Playtime (with Case)	Up to 24 hours
Water Resistance	IPX6
Control Type	Touch Control
Special Features	HiFi Sound Technology, ENC Clear Call
Battery Type	Lithium Ion (included)
Material	Plastic





## WARRANTY AND SUPPORT



For warranty information and customer support, please refer to the official Monster website or contact their customer service directly. The included user manual may contain specific warranty details for your region.

**Important:** Keep your purchase receipt as proof of purchase for warranty claims.



### Related Documents - AC520

	<a href="#">Monster Open Ear AC520 Quick Start Guide</a> Quick start guide for Monster Open Ear AC520 wireless headphones, covering product overview, charging, pairing, wearing, operation, LED indicators, and FCC compliance.
	<a href="#">Monster Open Ear AC225 Bluetooth Headphones Quick Start Guide</a> A concise guide to setting up and using your Monster Open Ear AC225 Bluetooth Headphones, covering charging, pairing, wearing, and basic operations.
	<a href="#">Monster Aria Free Quick Start Guide - Wireless Open Ear Headphones</a> Get started quickly with the Monster Aria Free open-ear wireless headphones. This guide covers charging, pairing, controls, and wearing instructions for model MH22134.
	<a href="#">Monster MH22241 Bluetooth Headphones Quick Start Guide</a> Quick start guide for Monster MH22241 Bluetooth Headphones, covering setup, pairing, operation, and indicator lights. Learn how to use your Monster Open Ear AC390 earbuds.

	<p><a href="#">Monster Open Ear AC210 Bluetooth Headphones Quick Start Guide</a></p> <p>User guide for Monster Open Ear AC210 Bluetooth headphones, covering setup, pairing, controls, and troubleshooting. Features include touch controls, voice assistant, and single-earphone mode.</p>
	<p><a href="#">Monster Open Ear AC600 Bluetooth Headphones Quick Start Guide</a></p> <p>A concise guide to setting up and using your Monster Open Ear AC600 Bluetooth headphones, including pairing, controls, and charging.</p>