

Manuals.plus /

› Conair /

› Conair Style Chemistry Starter Pack User Manual - Power Handle & 1-inch Straightener

Conair CBF01C

Conair Style Chemistry Starter Pack User Manual

POWER HANDLE & 1-INCH STRAIGHTENER (MODEL: CBF01C)

Important Safety Information

Please read all safety instructions before using this appliance. Failure to follow these instructions may result in electric shock, fire, or personal injury.

- **Burn hazard:** Surfaces get extremely hot during use. Avoid direct contact with skin.
- **Electric shock risk:** Keep away from water. Do not use near bathtubs, sinks, or other water sources.
- **Fire risk:** Unplug the appliance when not in use. Do not leave unattended when plugged in.
- Keep out of reach of children.

Product Overview

The Conair Style Chemistry Starter Pack includes a versatile Power Handle and a 1-inch Ceramic-Coated Straightener attachment. This system allows for personalized hair styling by easily interchanging various attachments (sold separately).

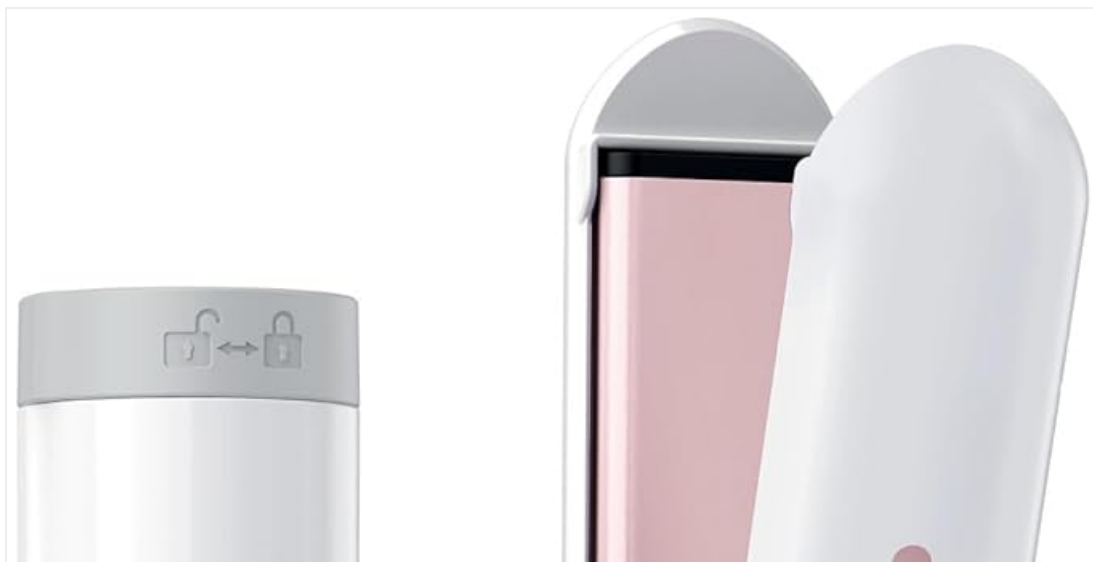




Image: Conair Style Chemistry Power Handle connected to the 1-inch Straightener attachment.

Components Included:

- **Power Handle:** The core unit featuring a digital display, power button, and temperature selection. It is compatible exclusively with Conair Style Chemistry attachments.

- **1-inch Ceramic-Coated Straightener Attachment:** Designed for smooth and shiny hair results.



Image: Diagram showing the Power Handle and the 1-inch Straightener attachment as separate components of the Starter Pack.

Setup

Before first use, ensure all packaging materials are removed. Connect the desired attachment to the Power Handle as described below.

Attaching the Straightener:

1. Align the arrow on the straightener attachment with the unlock symbol on the Power Handle.
2. Insert the attachment into the Power Handle.
3. Twist the LOCK RING (located on the Power Handle, not the attachment) to secure the attachment in place. Ensure it is firmly locked before plugging in or using.



Image: Step-by-step visual guide on how to connect and lock an attachment to the Power Handle.

Operating Instructions

Powering On and Temperature Selection:

1. Plug the Power Handle into a suitable electrical outlet.
2. Press and hold the Power ON/OFF Temperature Select Button until the digital display illuminates.
3. Press the Power ON/OFF Temperature Select Button repeatedly to cycle through the available heat settings. The digital display will show the selected temperature.

4. Allow the straightener to heat up to the desired temperature. The digital display will indicate when the temperature is reached.



It's all about the base

Power handle compatible

with all Style Chemistry

by Conair® attachments

Image: Close-up of the Power Handle showing the digital temperature display and the power/temperature select button.

Using the 1-inch Straightener:

- Ensure hair is clean, dry, and tangle-free.
- Section hair into manageable strands, typically 1 to 2 inches wide.
- Place a section of hair between the ceramic-coated plates, close to the roots.
- Gently glide the straightener down the length of the hair, from roots to ends, in a smooth, continuous motion. Avoid holding the straightener in one place for too long to prevent heat damage.
- Repeat for all sections of hair until desired straightness is achieved.
- The straightener features a cool tip for easy handling and control during styling.



Image: Diagram highlighting the cool tip, ceramic coating, and 1-inch plate size of the straightener attachment.

Automatic Shut-off:

For safety and energy conservation, the Power Handle is equipped with an auto-off feature. It will automatically shut off after a period of inactivity.

Changing Attachments:

To change attachments, first unplug the Power Handle and allow the current attachment to cool completely. Then, twist the LOCK RING to the unlock position and carefully remove the attachment. Follow the "Attaching the Straightener" steps to connect a new attachment.

Maintenance

Cleaning:

- Always unplug the appliance and allow it to cool completely before cleaning.
- Wipe the Power Handle and attachments with a damp cloth. Do not use abrasive cleaners or solvents.
- Ensure no water enters the electrical components.
- Dry thoroughly before storing or next use.

Storage:

Store the appliance in a cool, dry place, out of reach of children. Do not wrap the cord around the appliance, as this can damage the cord.

Troubleshooting

Problem	Possible Cause	Solution
Appliance does not turn on.	Not plugged in; power outlet malfunction; attachment not securely locked.	Ensure the appliance is fully plugged into a working outlet. Check if the attachment is correctly locked into the Power Handle.
Attachment not heating up.	Attachment not properly connected; incorrect temperature setting.	Verify the attachment is securely locked. Check the digital display for the selected temperature setting.
Hair is not straightening effectively.	Hair is too wet; sections are too large; temperature is too low.	Ensure hair is completely dry. Use smaller sections of hair. Increase the temperature setting if appropriate for your hair type.

Specifications

- **Model Name:** CBF01C
- **Brand:** Conair
- **Attachment Type:** 1-inch Straightener
- **Heater Surface Material:** Ceramic
- **Power Source:** Corded Electric
- **Heat Settings:** 6 settings, up to 400°F (205°C)
- **Features:** Digital display, Auto-off function, Lightweight design
- **Product Dimensions:** Approximately 11 x 5.49 x 5.49 cm (Power Handle + Attachment)

- **Weight:** Approximately 390 g
- **Country of Origin:** China

Warranty and Support

For warranty information and customer support, please refer to the warranty card included with your product or visit the official Conair website. Keep your purchase receipt as proof of purchase.

Conair Website: www.conair.com

