



[Manuals.plus](#) /

> [HHOlove](#) /

> TYPro Self Cleaning Cat Litter Box Automatic Hands-Free Smart Robot self Cleaning Cat Litter Box for Multiple Cats with APP Control Safe with Litter Mat Waste Bags and Deodorizer

HHOlove TYPro

TYPro Self-Cleaning Cat Litter Box User Manual

Model: TYPro | Brand: HHOlove

INTRODUCTION

The HHOLOVE TYPro Self-Cleaning Cat Litter Box is an advanced, automatic litter system designed to simplify pet care. It features self-shoveling, APP control, and enhanced safety mechanisms, providing a clean and convenient environment for your feline companions. This manual provides essential information for setup, operation, maintenance, and troubleshooting.

SAFETY INFORMATION

Your cat's safety is paramount. Please read and adhere to the following safety guidelines:

- The litter box features a 100% anti-pinch design and an expanded low entrance for safe use by cats weighing between 3 lbs and 20 lbs.
- Equipped with a gravity sensor, the device will stop operation if a cat enters during a cleaning cycle.
- Ensure all 8 buckles are securely fastened before use to prevent the silicone pad from falling off.
- Do not place the device on carpet or soft surfaces, as this may result in inaccurate weighing and shifting issues.
- Do not fill cat litter above the maximum line to prevent interference with the scooping process.
- The cat's weight needs to be greater than 3 lbs (1.36 kg) and older than 6 months for accurate sensor readings.

Instant Message

After Sale Service · Reply within 12 hrs

24/7

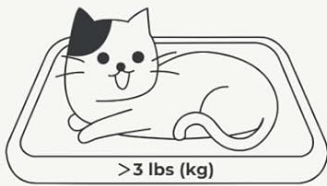


Hi! LOVE Via APP



Image: Internal safety mechanisms including anti-pinch design, PIR detection, and weight sensor.

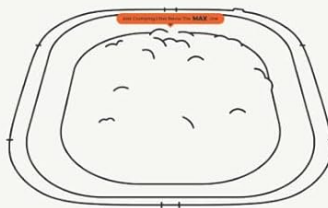
PRECAUTIONS · 注意事項 · 注意点



The cat's weight needs to be greater than 1kg (3 pounds) and older than 6 months; otherwise, it will affect the accuracy of the sensor.

貓咪的體重需要大於1kg(3磅)且大於6個月。否則會影響感測器準確度。

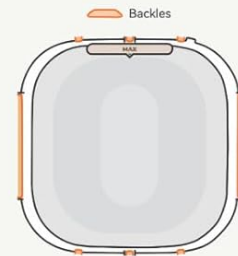
貓の体重は1kg (3ポンド) 以上で、6ヶ月以上必要です。そうでなければ、センサーの正確性が影響を受けます。



Please do not fill cat litter above the maximum line. Excess litter will be cleaned into the trash can during the scooping process.

請勿在最大線上填充貓砂。多餘貓砂會在鏟屎過程中被清理到垃圾桶內。

最大ライン以上に猫の砂を詰めないでください。余分な砂はスコopingプロセス中にゴミ箱に掃除されます。



Before use, please ensure that the 8 clips are securely fastened to prevent the silicone mat from falling off during use.

使用前，請確保8個卡扣重新扣緊，以防止砂膠墊脫落。

使用前に、8つのカフスが再度しっかりと固定されていることを確認してください。これにより、シリコンパッドが外れないようにすることができます。



Please connect to a secure 2.4GHz network. 5GHz networks and networks that require login are not supported.

請連接到安全的2.4GHz網路。不支援5GHz網路和需要登入的網路。

安全な2.4GHzネットワークに接続してください。5GHzネットワークとログインが必要なネットワークはサポートしていません。



When you do not receive the verification email because your email security level is too high, please contact customer service to activate your account.

因郵箱安全等級過高，收不到驗證郵件時，請聯絡客服啟動帳號。

メールボックスのセキュリティレベルが高すぎて、検証メールが届かない場合は、カスタマーサービスに連絡してアカウントをアクティブ化してください。



Please do not place the device on the carpet and do not drag the device, as this may result in inaccurate weighing and other issues.

請勿將設備放置在地毯上且勿拖曳設備，否則會出現稱重不准等情況。

デバイスをカーペットに置かず、ドラッグしないでください。そうしないと、計測が不正確になるなどの問題が発生する可能性があります。

Image: Important precautions for safe and effective use, including cat weight, litter level, buckle check, and Wi-Fi connection.

WHAT'S INCLUDED

Upon unboxing, please verify that all components are present:

- TYPro Self-Cleaning Cat Litter Box x 1
- Cat Litter Mat x 1
- Waste bags (20 pack) x 1
- Deodorizer x 2
- Power Adapter x 1
- User Manual x 1 (this document)
- Quick Guide x 1

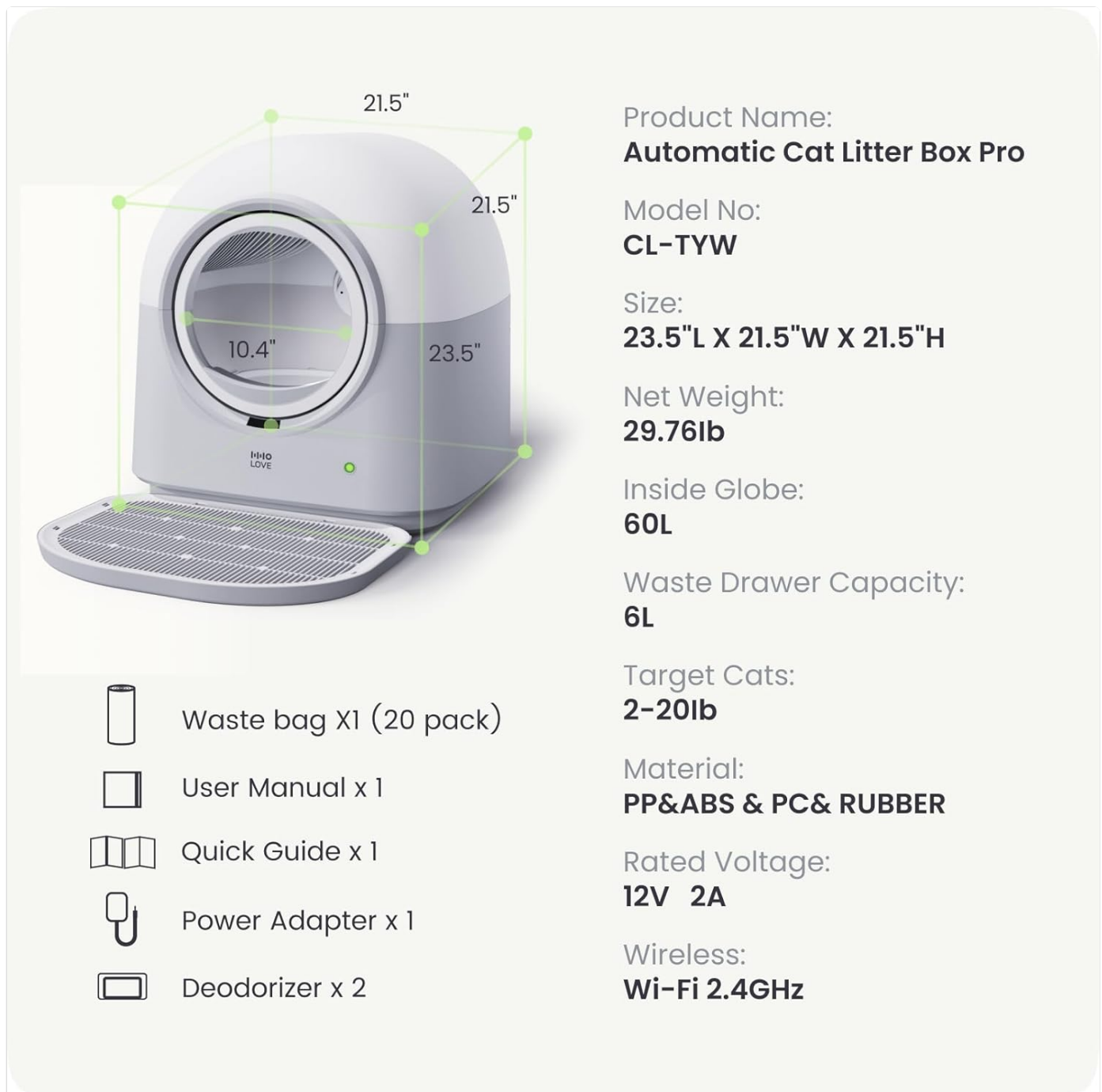


Image: Visual representation of all items included in the TYPro Self-Cleaning Cat Litter Box package.

SETUP

Follow these steps to set up your TYPro Self-Cleaning Cat Litter Box:

1. Unpack all components and place the litter box on a flat, stable surface. Avoid carpets or soft flooring.
2. Ensure the 8 internal buckles are securely fastened to prevent the silicone pad from detaching during operation.
3. Insert a waste bag into the waste drawer and slide it into the designated compartment at the base of the unit.
4. Add clumping cat litter (mineral, tofu, plant, or mixed litters are compatible) to the main globe, ensuring it does not exceed the maximum fill line. Crystal litter is not compatible.
5. Place the cat litter mat in front of the litter box entrance.
6. Connect the power adapter to the litter box and plug it into a power outlet.
7. Download the HHOLOVE APP from your smartphone's app store.
8. Open the APP and follow the on-screen instructions to connect your litter box to a secure 2.4GHz Wi-Fi network.

Please Check the 8 Buckles

Before use, make sure the 8 buckles are fastened to prevent the silicone pad from falling off

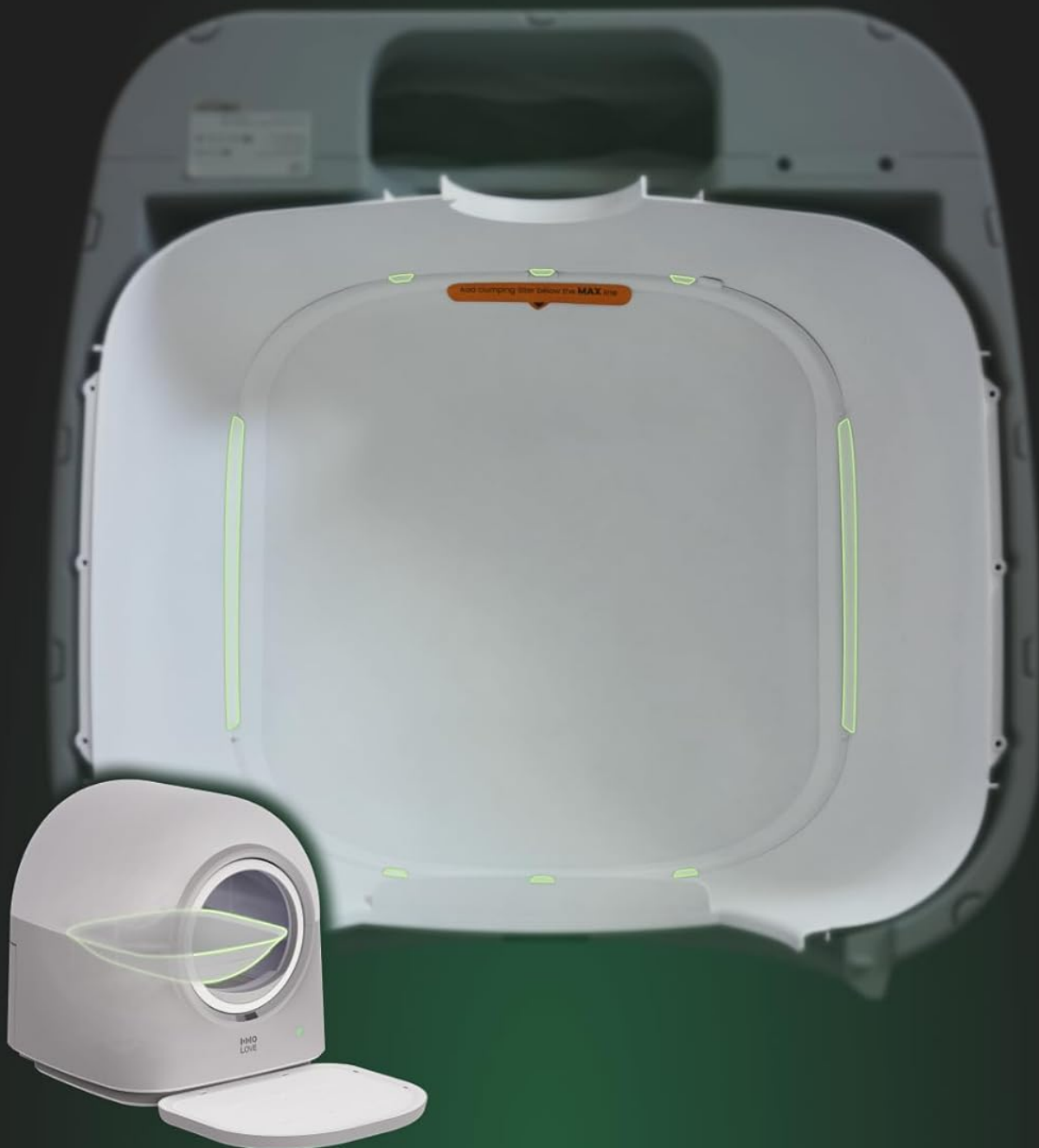


Image: Verify the 8 buckles are fastened to secure the silicone pad.

Compatible to All Clumping Litter

Works with
mineral/tofu/plant/mixed litters ...etc

*Crystal Litter Not Applicable



Image: Compatible litter types for the TYPro Self-Cleaning Cat Litter Box.

OPERATING INSTRUCTIONS

The TYPro litter box operates automatically, but you can also control it via the HHOLove APP.

Automatic Operation:

The litter box will detect when your cat has used it and automatically initiate a cleaning cycle after a set delay (configurable via APP). The self-shoveling mechanism separates waste and deposits it into the sealed waste drawer.

APP Control:

The HHOLOVE APP provides comprehensive control and monitoring features:

- **Health Tracking:** Monitor your cat's bathroom habits and weight (via gravity sensor).
- **Remote Control:** Manually initiate cleaning cycles, sterilization, or empty the litter.
- **Risk Alerts:** Receive notifications for waste drawer fullness, litter replacement, or any irregularities.
- **Customization:** Adjust cleaning schedules, scoop times, and other settings.

Smart APP Smart Care

 Health Track  Remote Control  Risk Alert

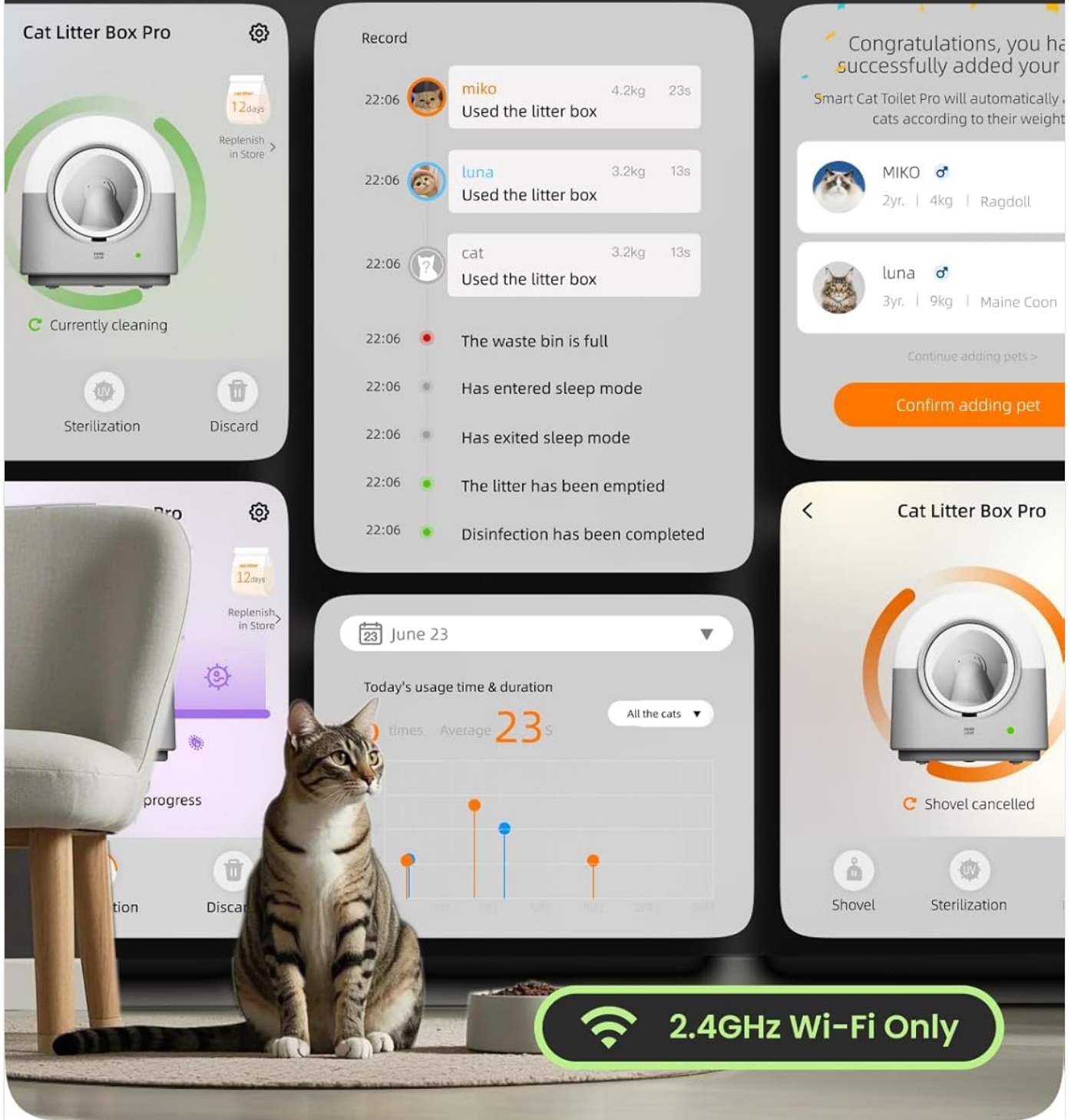


Image: HHOLOVE APP interface for smart care and control.

Your browser does not support the video tag.

Video: This video demonstrates the initial setup and basic usage of the TY-Pro P1 self-cleaning cat litter box, including how to power it on and its automatic functions.



Image: The multi-step odor disposal system ensures a fresh environment.

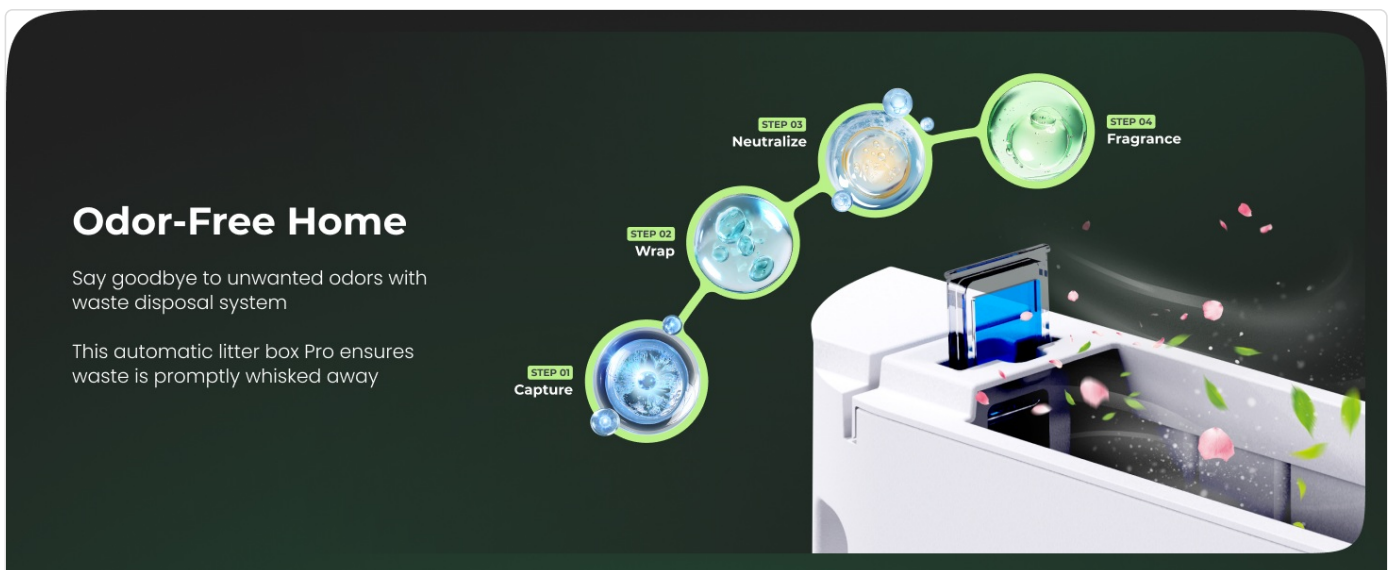


Image: The built-in sterilization lamp helps maintain hygiene by running every 6 hours.

MAINTENANCE

Regular maintenance ensures optimal performance and longevity of your litter box.

Waste Bag Replacement:

When the APP notifies you that the waste drawer is full, or approximately every 5-7 days for one cat, replace the waste bag.

Your browser does not support the video tag.

Video: This video demonstrates the process of replacing the liner (waste bag) in the TY-Pro self-cleaning cat litter box.

Cleaning the Litter Box:

Rinse the litter box regularly to keep it clean and extend its lifespan.

1. **Step 01:** Remove the cover lid and inner bin.
2. **Step 02:** Detach the silicone pad.
3. **Step 03:** Wipe the base (wipe only, do not rinse).

4. **Step 04:** Rinse other parts. High-pressure water rinsing is recommended for the inner bin and silicone pad.



Image: Step-by-step guide for easy cleaning of the TYPro litter box.

Your browser does not support the video tag.

Video: This video provides a detailed guide on how to clean the automatic TY-Pro litter box, including disassembling and washing components.

TROUBLESHOOTING

If you encounter issues with your TYPro Self-Cleaning Cat Litter Box, refer to the following common problems and solutions:

Problem	Possible Cause	Solution
Litter box not cleaning automatically.	Cat weight below 3 lbs; sensor obstruction; APP settings.	Ensure cat meets weight requirement. Check for debris blocking sensors. Verify cleaning schedule in HHOLOVE APP.
Odor persists.	Waste drawer full; deodorizer needs replacement; improper cleaning.	Empty waste drawer. Replace deodorizer. Perform thorough cleaning as per maintenance instructions.
Litter tracking outside the box.	Cat litter type; mat not positioned correctly.	Ensure you are using clumping litter. Adjust the litter mat to maximize litter trapping.
Device not connecting to Wi-Fi.	Incorrect Wi-Fi band; weak signal; incorrect password.	Ensure you are connecting to a 2.4GHz network. Move the device closer to the router. Double-check Wi-Fi password.
Cat is hesitant to use the litter box.	New environment; noise sensitivity.	Place the old litter box nearby initially. Turn off automatic cleaning for a few days to allow adjustment. Use treats or catnip to encourage use.

SPECIFICATIONS

Feature	Detail
---------	--------

Feature	Detail
Product Name	Automatic Cat Litter Box Pro
Model Number	TYPro (CL-TYW)
Dimensions (L x W x H)	21.5" x 21.5" x 23.5"
Net Weight	23 Pounds (29.76lb as per image)
Inside Globe Capacity	60L
Waste Drawer Capacity	6L
Target Cat Weight	3 lbs - 20 lbs
Material	Acrylonitrile Butadiene Styrene (ABS), PP&ABS & PC & RUBBER
Rated Voltage	12V 2A
Wireless Connectivity	Wi-Fi 2.4GHz Only
Noise Level	≤ 36dB



Image: The TYPro litter box operates at a low noise level of 36dB or less.

WARRANTY & SUPPORT

The HHOLOVE TYPro Self-Cleaning Cat Litter Box comes with a **1-year warranty** from the date of purchase. This warranty covers manufacturing defects and malfunctions under normal use. Please retain your proof of purchase for warranty claims.

For technical support, troubleshooting assistance, or warranty inquiries, please contact HHOLOVE customer service. You can reach us via:

- **HHOLOVE APP:** Utilize the instant message feature within the app for a reply within 12 hours.
- **Email:** service@hholove.com

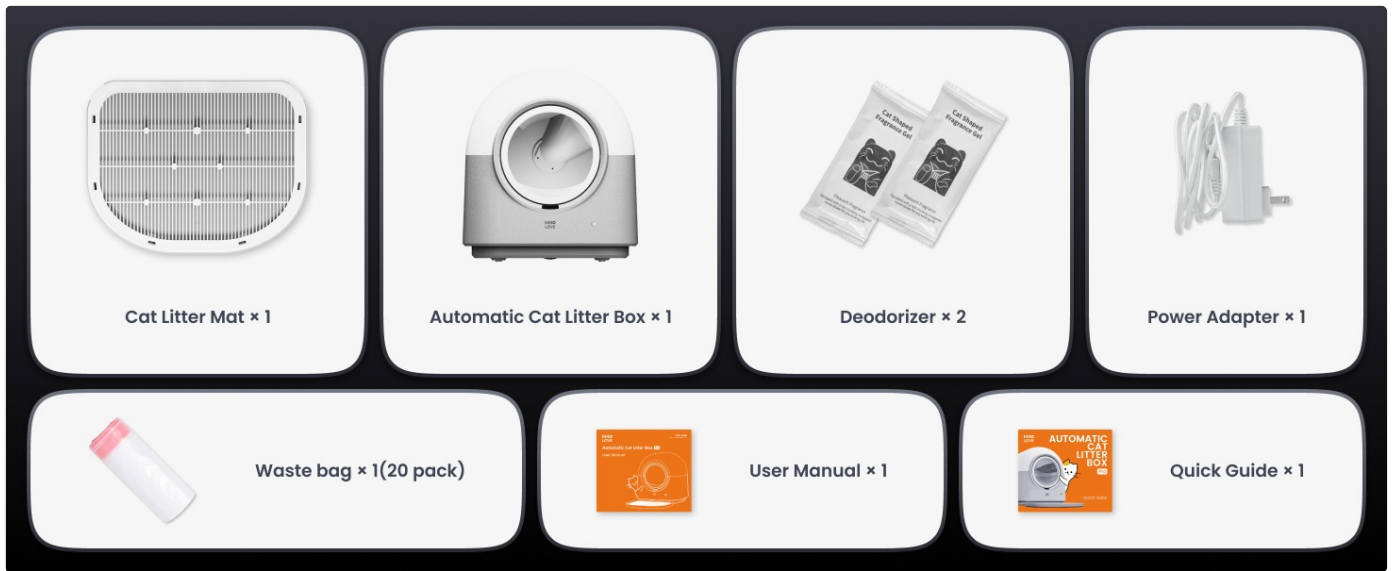


Image: HHOLove offers 24/7 instant message support via their app.