

## Ashfly inskam355

# Ashfly Mini LED Pocket Microscope User Manual

**Model:** inskam355 | **Brand:** Ashfly

## 1. INTRODUCTION

Thank you for choosing the Ashfly Mini LED Pocket Microscope. This educational science kit is designed to provide young scientists with an engaging way to explore the microscopic world. Featuring a 2-inch IPS screen, HD digital imaging, and dual lens functionality, this portable microscope allows for real-time observation, photo capture, and video recording of tiny wonders. Please read this manual carefully to ensure proper use and maintenance of your device.

## 2. PRODUCT OVERVIEW

### 2.1 Key Features

- **2-inch IPS Screen:** Provides vivid microscopic images and captivating videos in real-time with 1080P HD digital imaging.
- **High Magnification:** Offers up to 200x magnification with a 4x zoom adjustment knob for exceptional clarity.
- **Dual Lens Design:** Includes a digital microscope for detailed observation and a physical magnifying glass for general viewing.
- **Photo & Video Recording:** Supports capturing still images and recording videos of observations. Built-in memory stores up to 100 photos.
- **LED Illumination:** Equipped with multiple LED lights for bright and clear viewing of specimens.
- **Portable & Durable:** Compact and lightweight design, suitable for indoor and outdoor exploration.
- **PC/Laptop Connectivity:** Connects via USB for charging and transferring photos/videos to a computer (Windows XP/Vista/7/8/10/11, Mac OS X11.0 or higher).
- **USB Rechargeable:** Powered by an included Lithium Polymer battery, rechargeable via USB Type-C.

### 2.2 Package Contents

- Ashfly Mini LED Pocket Microscope (Model inskam355)
- Type C Charging Cable

## 2.3 Product Diagram



Figure 2.3.1: Front view of the Ashfly Mini LED Pocket Microscope with its digital display.

# EVERY DETAIL DESERVES ATTENTION

01



## Minimalist UI easy operation

Learn it in one minute,  
children can easily get started

02



## Fun magnifying glass Optical digital two-in-one

A great tool for  
children to observe nature

03



## Easy to hold Designed for children

Palm size, children  
can explore without burden

Figure 2.3.2: Detailed view of the microscope's controls, dual lens, and ergonomic grip.

# NEWLY UPGRADED SUPER MICRO LENS

Macro photography is eye-opening easy to focus, and easy to use

**500X**

Gain

**2,000,000**

Lens pixels



Figure 2.3.3: Illustration of the microscope's advanced micro lens and LED illumination system.

## 3. SETUP

### 3.1 Charging the Device

Before first use, fully charge the microscope. Connect the provided Type C Charging Cable to the microscope's charging port and the other end to a USB power adapter (not included) or a computer's USB port. The charging indicator will show the charging status and turn off when fully charged.

### 3.2 Initial Power On

Press and hold the power button (usually located on the side or front panel) for a few seconds until the screen illuminates. The device will boot up and display the main observation interface.

## 4. OPERATING INSTRUCTIONS



## 4.1 Powering On/Off

- **To Power On:** Press and hold the power button until the screen turns on.
- **To Power Off:** Press and hold the power button until the screen turns off.

## 4.2 Using the Digital Microscope

Place the microscope's digital lens directly over the object you wish to observe. Adjust the distance until the image on the 2-inch IPS screen is clear. Use the zoom adjustment knob to fine-tune the magnification up to 200x.

## 4.3 Capturing Photos and Videos

While observing, press the designated photo button to capture a still image. Press the video button to start recording; press it again to stop. The device has internal memory for up to 100 photos. For more storage, a TF card slot may be available (TF card not included).

# HD PHOTO AND VIDEO REAL-TIME RECORD SHARING

Supports photo and video functions, comes with built-in memory and does not require a TF card

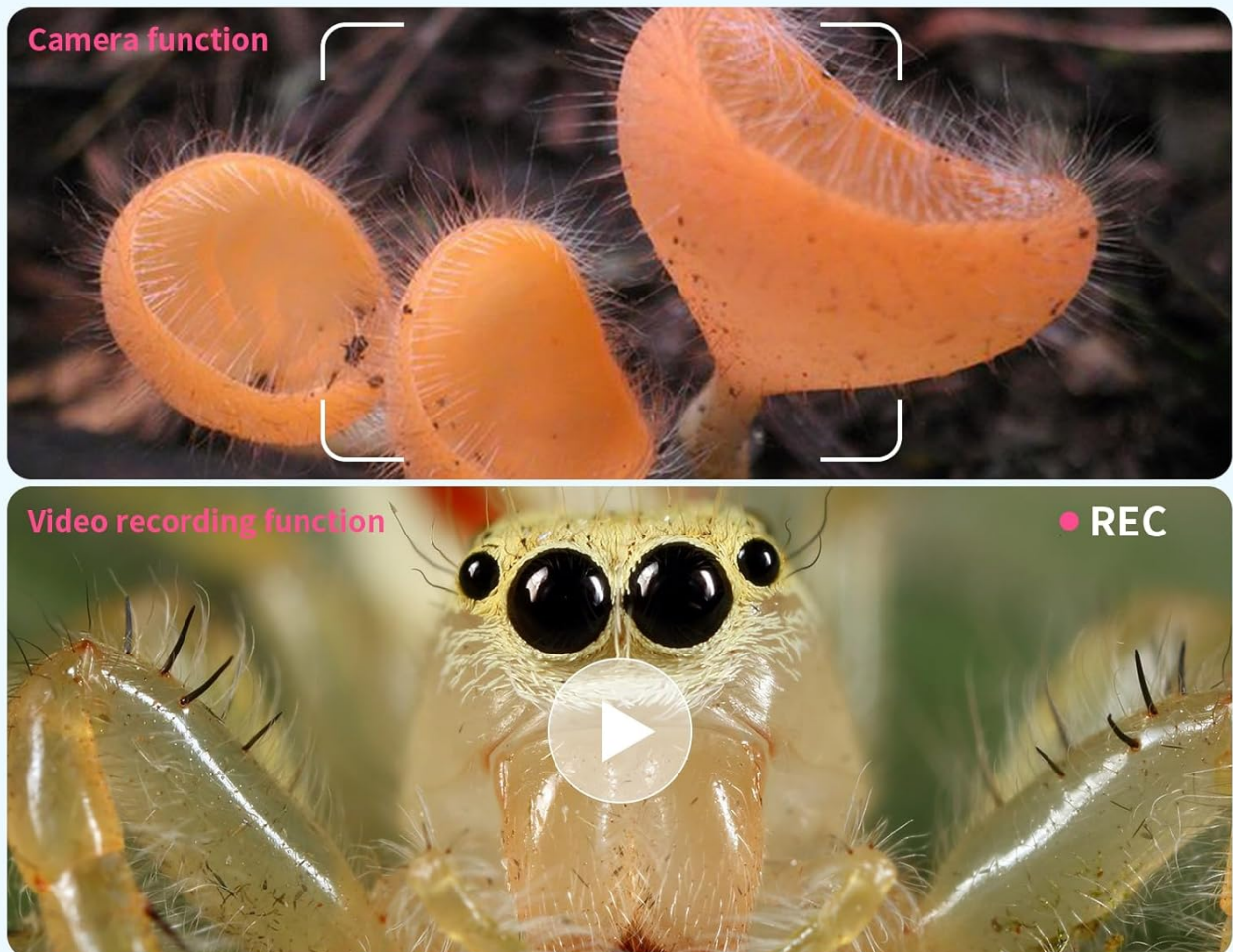


Figure 4.3.1: Demonstrating photo and video recording capabilities.

## 4.4 Using the Physical Magnifying Glass

The opposite end of the device features a traditional physical magnifying glass. This can be used for quick, convenient viewing of larger small objects without needing to power on the digital microscope. **Note:** Do not point

the illuminated lens at your eyes.

## 4.5 Connecting to PC/Laptop

To transfer captured photos and videos, connect the microscope to your computer using the Type C Charging Cable. The device will appear as a removable storage device. You can then drag and drop files to your computer. Supported operating systems include Windows XP, Vista, 7, 8, 10, 11, and Mac OS X11.0 or higher.



Figure 4.5.1: Connecting the microscope to a laptop for data transfer.

## 5. MAINTENANCE

### 5.1 Cleaning

- Use a soft, dry cloth to clean the exterior of the microscope.
- For the lens and screen, use a microfiber cleaning cloth specifically designed for optics. Do not use abrasive cleaners or solvents.

### 5.2 Storage

Store the microscope in a cool, dry place away from direct sunlight and extreme temperatures. Keep it in its original packaging or a protective case when not in use to prevent dust and damage.

### 5.3 Battery Care

- Charge the battery regularly, even if the device is not used frequently, to maintain battery health.
- Avoid fully discharging the battery for extended periods.

## 6. TROUBLESHOOTING

| Problem                            | Possible Cause   | Solution  |
|------------------------------------|--|---|
| Device does not turn on.           | Battery is low or depleted.                                | Charge the device using the provided USB-C cable.   |
| Image is blurry or out of focus.   | Incorrect distance from object; lens is dirty.             | Adjust the distance between the lens and the object. Clean the lens with a microfiber cloth.                                  |
| Cannot transfer files to computer. | Incorrect cable connection; incompatible operating system. | Ensure the USB-C cable is securely connected. Verify your computer's operating system is supported. Try a different USB port. |
| LED lights are not working.        | Battery is low; LED function is off.                       | Charge the device. Check if there is a button to toggle the LED lights.   |

If you encounter issues not listed here, please refer to the contact information in the Warranty and Support section.

## 7. SPECIFICATIONS

| Feature               | Detail                                    |
|-----------------------|---|
| Model Name            | inskam355                                 |
| Screen Size           | 2.0-inch IPS                              |
| Magnification Maximum | 200x                                      |
| Zoom Adjustment       | 4x  |
| Light Source Type     | LED                                       |
| Battery Type          | 1 Lithium Polymer (included)              |
| Power Source          | USB Rechargeable                          |
| Material              | Plastic                                   |
| Item Weight           | 4.2 ounces                                |
| Supported OS          | Windows XP/Vista/7/8/10/11, Mac OS X11.0+ |

