



[Manuals.plus](#) /

› [HOGYME](#) /

› HOGYME Outdoor Lean-to Pergola Instruction Manual

HOGYME HGP078

HOGYME Outdoor Lean-to Pergola Instruction Manual

Model: HGP078 (10X14 FT, Frosted Gray)

INTRODUCTION

This manual provides detailed instructions for the assembly, operation, maintenance, and troubleshooting of your HOGYME Outdoor Lean-to Pergola. Designed to transform your outdoor area into a comfortable and stylish space, this pergola offers protection from the elements while enhancing your leisure experience.

Package Contents:

- 1 x Outdoor Pergola (components)
- 1 x User Manual (this document)
- 2 x Pair of Gloves

SAFETY INFORMATION

Important Safety Precautions:

- Always secure the gazebo to a stable foundation using the provided ground screws.
- Be cautious of extreme weather conditions (e.g., strong winds, heavy snow, hail) and potential hazards during assembly, disassembly, and use.
- Ensure all fasteners are tightened securely before and after assembly. Periodically check for loose connections.
- Do not hang heavy objects from the pergola frame.
- Keep children and pets away from the assembly area.

SETUP AND ASSEMBLY

Assembly of the HOGYME Outdoor Lean-to Pergola requires two adults and can take several hours. Follow the detailed instructions provided in the separate assembly manual included in your package. Patience and careful

attention to detail are crucial for proper installation.

Key Assembly Notes:

- The product is shipped in two parcels. If one parcel arrives first, please wait patiently for the other before beginning assembly.
- Ensure all parts are accounted for before starting. Refer to the parts list in the assembly manual.
- Pre-drilled bases and ground screws are provided for securing the structure to various floor types.
- The hollow sheet roof panels are designed for easy installation and weather resistance.



Figure 1: Basic frame structure of the pergola during assembly.

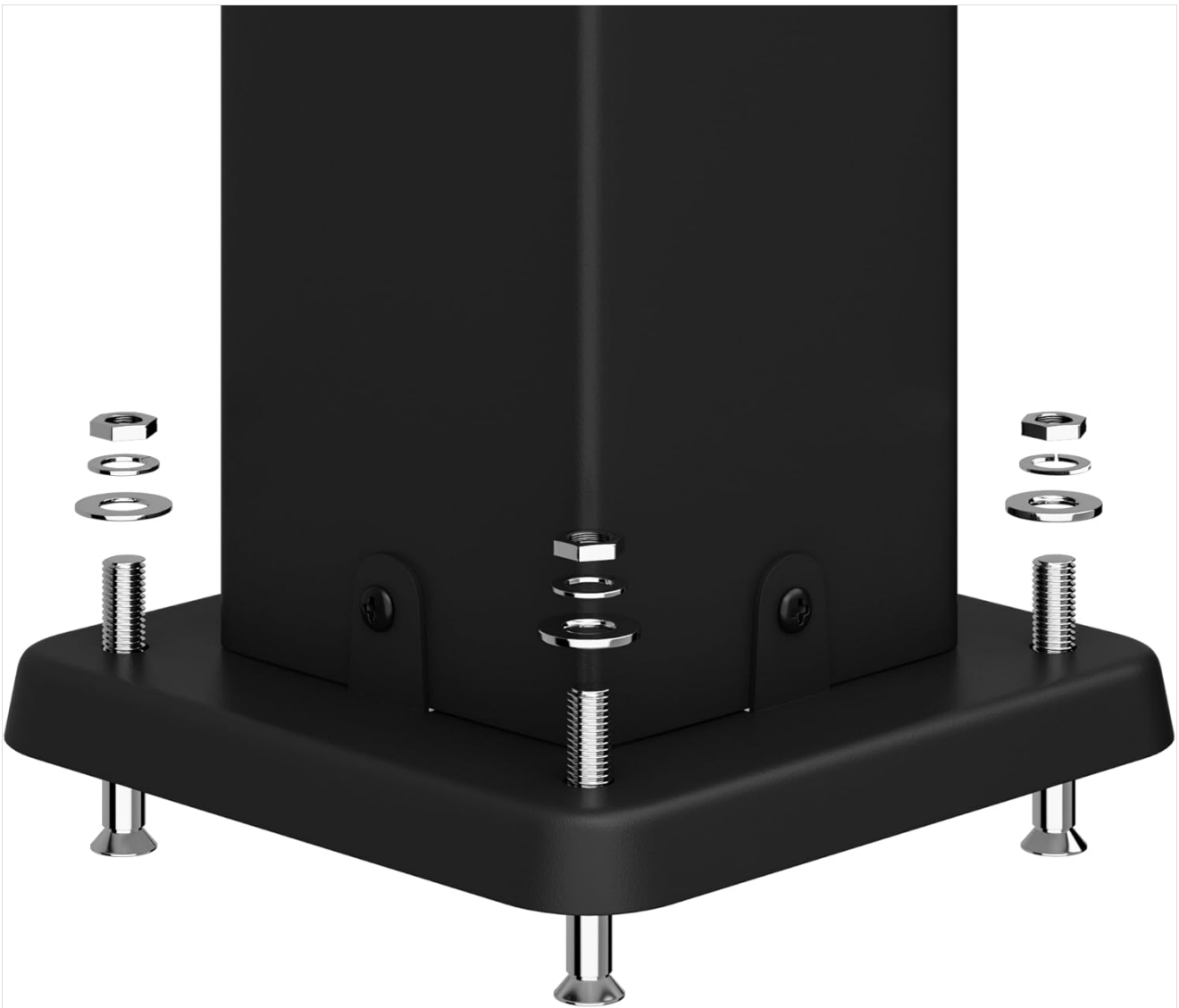


Figure 2: Detail of the base plate and ground screws for securing the pergola.

OPERATING AND USAGE

The HOGYME Outdoor Lean-to Pergola is designed to provide a versatile and comfortable outdoor living space. Its sloped sunlight roof offers excellent lighting while providing protection from sun and various weather conditions.

Key Features and Benefits:

- **All-Weather Construction:** Constructed from heavy-duty iron pipe and aluminum alloy, the pergola is robust and designed for long-term outdoor use. The hollow sheet roof is engineered to withstand accumulated snow, heavy rain, and strong UV rays.
- **Sunlight Panels:** The roof panels allow for natural light while providing shade and UV protection, creating a pleasant environment.
- **Stable Design:** Equipped with pre-drilled bases and ground screws, the structure can be securely anchored to various surfaces, providing stability against wind.
- **Integrated Drainage:** Built-in gutters facilitate efficient water drainage, preventing water accumulation on the roof.



Figure 3: The pergola provides an ideal setting for evening relaxation.



All gazebos come with a pre-configured structure to meet your needs for expanding coverage area through additional accessories.

Figure 4: The pergola offers a versatile space for various outdoor activities and can be accessorized.



Flexible panels surpass rigid panels in reducing impact force from events like hailstorms. Install against the wall for strong wind resistance and high loadbearing capacity.



Anti-UV



Smooth Drainage



Fire-resistant



Waterproof



Windproof:40-70Mph



Heavy-duty Frame

Figure 5: The roof panels are designed for anti-UV, smooth drainage, fire resistance, waterproofing, and wind resistance.



Figure 6: The robust construction allows the pergola to withstand accumulated snow.

MAINTENANCE

Regular maintenance will extend the lifespan and preserve the appearance of your HOGYME Outdoor Lean-to Pergola.

- **Cleaning:** Clean the frame and roof panels periodically with mild soap and water. Rinse thoroughly with clean water. Avoid abrasive cleaners or harsh chemicals that could damage the finish or materials.
- **Fastener Check:** Annually, or after severe weather, inspect all bolts, screws, and connections to ensure they remain tight. Re-tighten any loose fasteners.
- **Drainage System:** Ensure the built-in gutters are free of debris (leaves, dirt) to allow for proper water drainage.
- **Winter Care:** While designed to withstand snow, it is advisable to clear excessive snow accumulation from the roof to prevent potential damage, especially during heavy snowfall.

TROUBLESHOOTING

This section addresses common issues you might encounter with your pergola.

| Problem | Possible Cause | Solution |
|-------------------------------------|--|--|
| Holes do not align during assembly. | Incorrect orientation of parts; manufacturing variance. | Double-check part numbers and orientation as per the assembly manual. If parts are genuinely misaligned, contact customer support. |
| Water leaks through the roof. | Improper installation of roof panels; damaged panels; clogged gutters. | Ensure all roof panels are correctly seated and sealed. Check for any cracks or damage to panels. Clear any debris from the gutters. |
| Missing parts. | Shipping error; oversight during packaging. | Verify against the parts list in the assembly manual. Contact HOGYME customer support immediately with details of the missing parts. |
| Pergola feels unstable. | Loose fasteners; improper anchoring to the ground. | Ensure all bolts and screws are fully tightened. Confirm the base plates are securely anchored to the ground using the provided ground screws. |

SPECIFICATIONS

| Attribute | Detail |
|--------------------------------|--|
| Brand | HOGYME |
| Model Number | HGP078 |
| Color | Frosted Gray |
| Material | Iron Pipe + Aluminum Alloy |
| Product Dimensions (L x W x H) | 119.7"L x 163.3"W x 97.24"H (10X14 FT) |
| Item Weight | 177.6 Pounds |
| Floor Area | 135.77 Square Feet |
| Water Resistance Level | Waterproof |
| Ultraviolet Light Protection | Yes |
| Assembly Required | Yes |



Figure 7: Detailed dimensions of the HOGYME Outdoor Lean-to Pergola.

WARRANTY AND SUPPORT

For specific warranty information regarding your HOGYME Outdoor Lean-to Pergola, please refer to the documentation included with your purchase or contact HOGYME customer support directly. Warranty terms typically cover manufacturing defects.

Customer Support:

If you have any questions, require assistance with assembly, or need to report missing/damaged parts, please contact HOGYME customer service. You may also refer to the product page on Amazon for additional resources or to contact the seller.

- Visit the [HOGYME Store on Amazon](#) for more information.
- Refer to the product listing on Amazon for seller contact details.

