



Manuals.plus /

- › **WinZo /**
- › WinZo Luxury Smart Toilet User Manual

WinZo SM8009B-1

WinZo Luxury Smart Toilet User Manual

Model: SM8009B-1

Brand: WinZo

INTRODUCTION

This manual provides comprehensive instructions for the installation, operation, and maintenance of your WinZo Luxury Smart Toilet. Please read this manual thoroughly before installation and use to ensure proper function and safety. Keep this manual for future reference.



Image: The WinZo Luxury Smart Toilet in its elegant matte grey finish, showcasing its sleek, tankless one-piece design.

SAFETY INFORMATION

Always adhere to local plumbing and electrical codes during installation. Ensure the toilet is connected to a grounded 110V power outlet. Do not attempt to repair the unit yourself; contact qualified service personnel. Disconnect power before performing any maintenance or cleaning.

- Do not immerse the unit in water.
- Keep electrical connections dry.
- Ensure proper ventilation in the bathroom.
- Do not use abrasive cleaners or harsh chemicals on the toilet surface.

PACKAGE CONTENTS

Verify that all components are present before beginning installation:

- WinZo Smart Toilet Unit
- User Manual (this document)
- Wax Ring
- Angle Valve
- Installation Hardware

SPECIFICATIONS

Model Number	SM8009B-1
Color	Gray-Elongated Heated Seat
Product Dimensions (D x W x H)	28.25" x 15.25" x 20.5"
Material	Ceramic, Plastic
Item Weight	98 Pounds
Installation Type	Floor Mounted
Rough-in	Standard 12"
Seat Height	17" (Comfort Height)
Power Requirement	110V Power Outlet

WinZo

Elongated Smart Toilet

Product Size

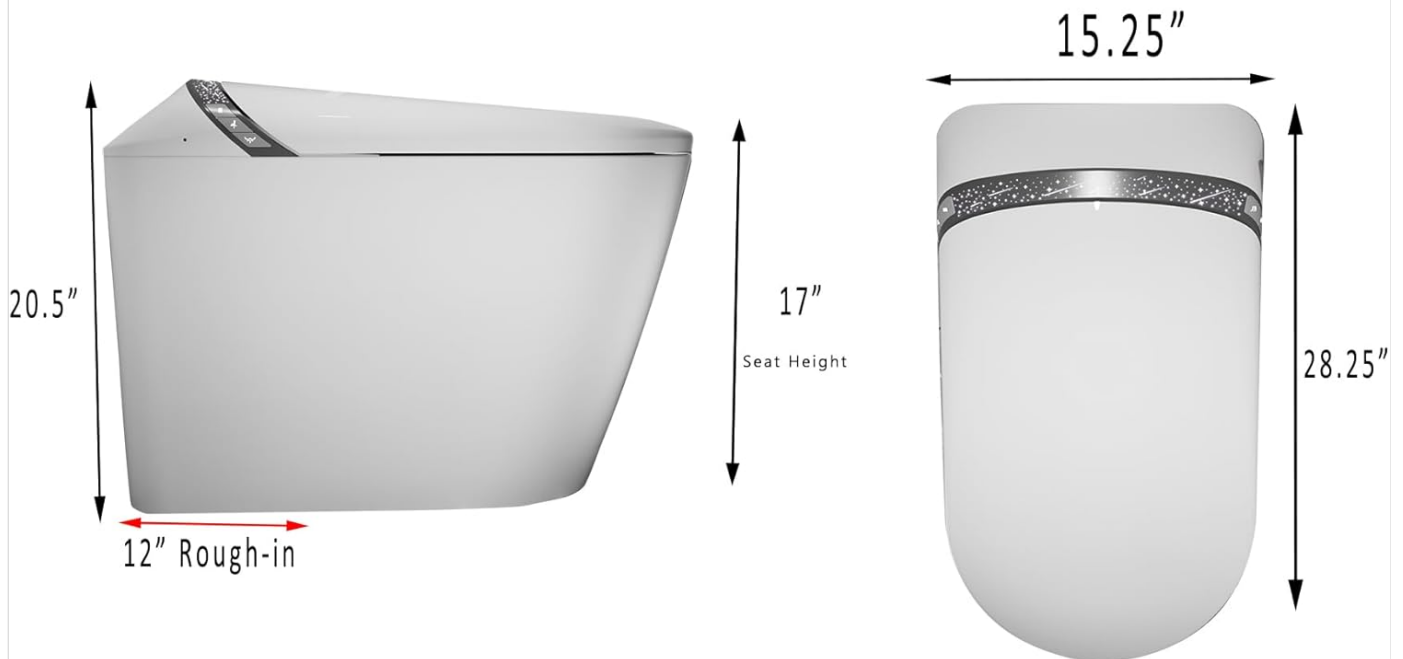


Image: Detailed product size diagram showing dimensions for depth, width, height, rough-in, and seat height.

SETUP AND INSTALLATION

The WinZo Smart Toilet is designed for easy installation with a standard 12" rough-in. A 110V power outlet is required near the installation area. No extra tank is needed as it features a tankless design.

Installation Steps:

- 1. Prepare the Area:** Ensure the water supply is turned off and the old toilet (if any) is removed. Clean the flange area thoroughly.
- 2. Install Wax Ring:** Place the provided wax ring firmly around the toilet flange.
- 3. Position the Toilet:** Carefully lift and set the smart toilet onto the wax ring, aligning the bolts with the holes in the toilet base.
- 4. Secure the Toilet:** Use the provided installation hardware to secure the toilet to the floor. Do not overtighten.
- 5. Connect Water Supply:** Connect the water supply line to the angle valve and the toilet's inlet. Ensure all connections are tight to prevent leaks.
- 6. Connect Power:** Plug the toilet's power cord into a grounded 110V electrical outlet.
- 7. Test Functionality:** Turn on the water supply and check for leaks. Test the flush and bidet functions as described in the operating section.

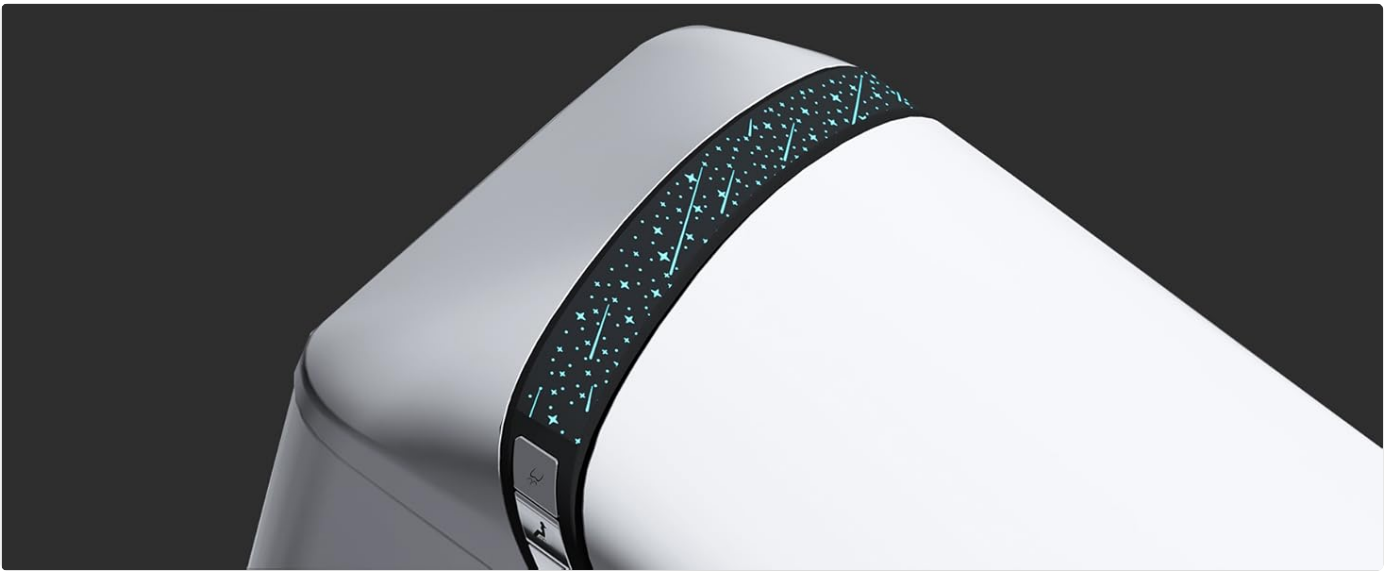


Image: The WinZo Smart Toilet seamlessly integrated into a contemporary bathroom setting, highlighting its sleek design and compact footprint.

OPERATING INSTRUCTIONS

Your WinZo Smart Toilet offers a range of intelligent features for enhanced comfort and hygiene.

Automatic Features:

- **Auto Open/Close Seat:** The seat will automatically open when you approach and close after use.
- **Foot Kick Sensor:** A convenient foot kick sensor allows for hands-free opening of the seat.
- **Auto Flush:** The toilet features an automatic flush system after use.

Auto Open

Soft Close

Side Button

Foot Kick



Image: Illustration of the WinZo Smart Toilet's auto-open and soft-close lid, along with the foot kick sensor for hands-free operation.

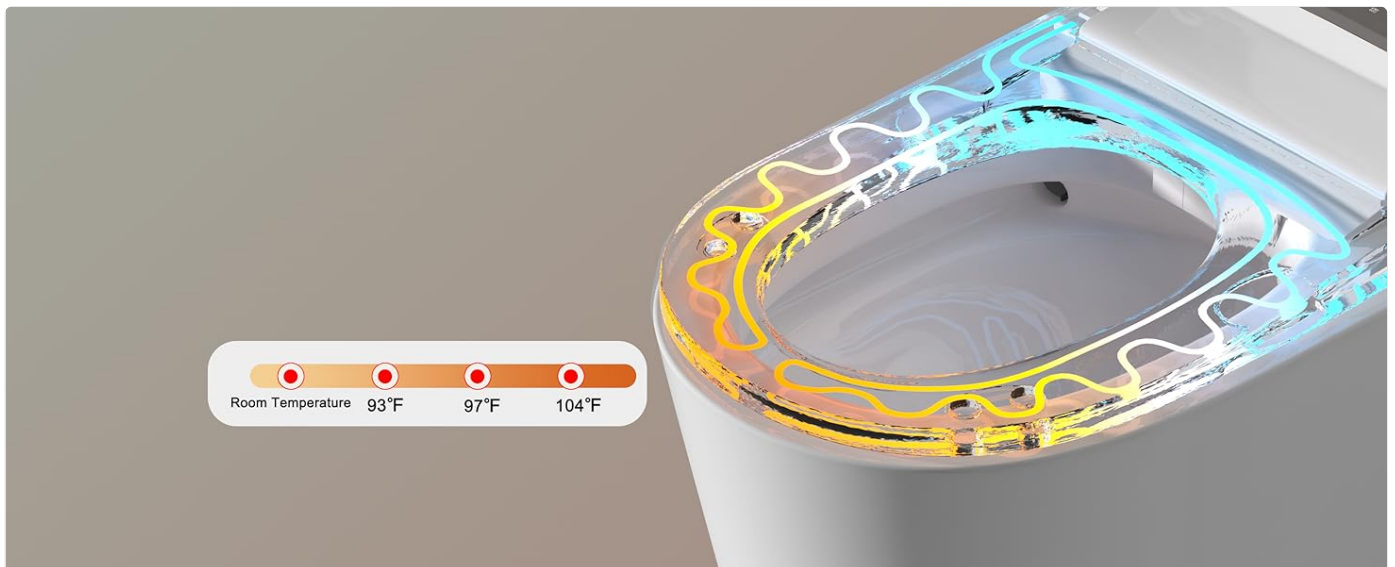


Image: A step-by-step diagram illustrating the automatic opening and closing sequence, as well as the foot-kick activation for the toilet seat.

Bidet and Wash Modes:

The toilet offers multiple wash modes for personalized cleansing. Use the side buttons or remote control to select your preferred mode.

- **Hip Wash (Back Wash):** For posterior cleansing.
- **Female Wash (Front Wash):** Gentle wash for feminine hygiene.
- **Mobile Wash:** Provides oscillating spray for wider coverage.
- **Adjustable Water Temperature:** Customize the water temperature for comfort.

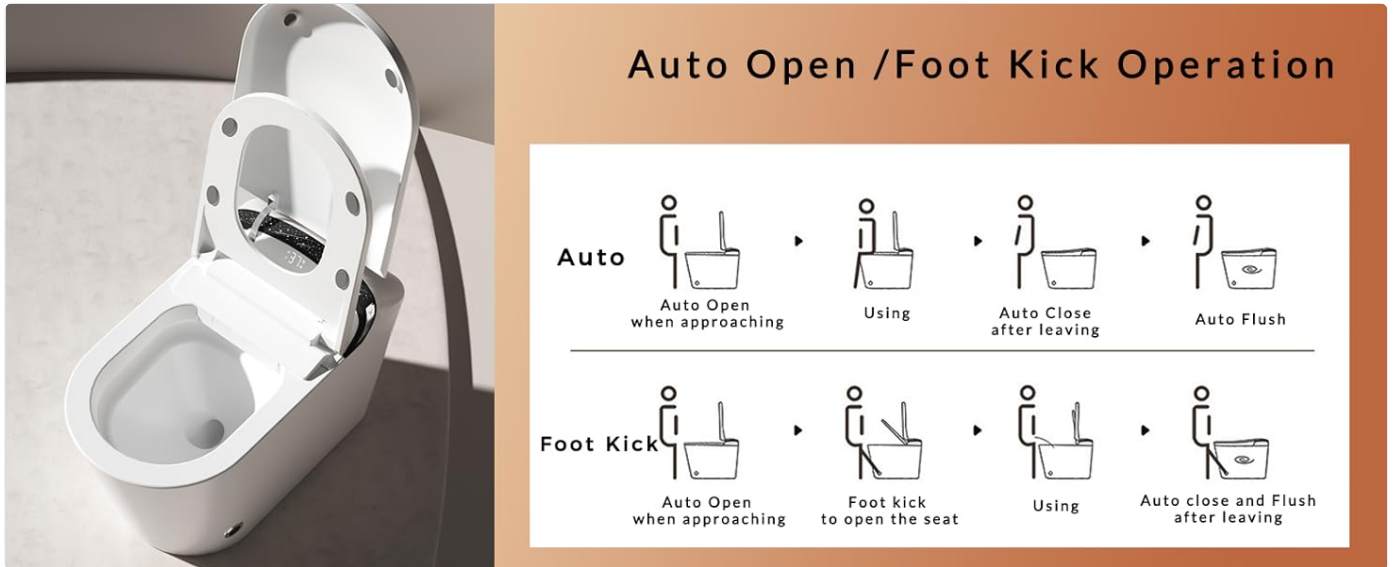


Image: Close-up view of the bidet nozzle extending and spraying water, demonstrating its functionality.

Self-Cleaning Nozzles with UV-C Technology

Multiple Cleaning Modes

Keep Healthy and Hygienic Life

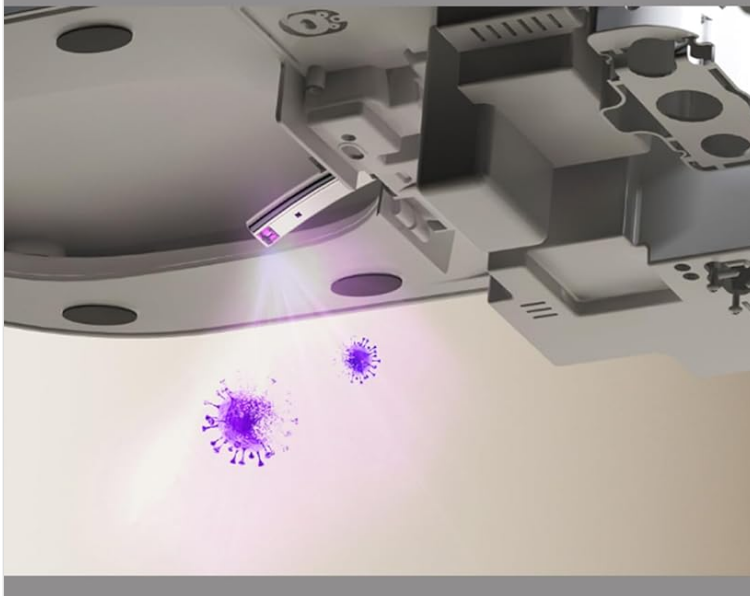


Image: Visual representation of the self-cleaning nozzles with UV-C technology and various wash modes, including movable, hip, and female washing.

Comfort Features:

- **Heated Seat:** The elongated seat provides instant heating with adjustable temperature settings.
- **Warm Air Drying:** After washing, a warm air dryer provides a comfortable and efficient drying experience.
- **Starry Night Light:** An integrated LED starry night light system provides subtle illumination for nighttime use.



Image: An illustration demonstrating the adjustable temperature settings for the heated toilet seat, ranging from room temperature to 104°F.



Image: An illustration depicting the warm air drying function, showing air flow from the toilet unit.



Image: Close-up view of the Starry Night Light System integrated into the toilet's design, providing subtle illumination.



Image: The toilet seat with its integrated night light glowing blue, providing soft illumination in the dark.

Controls:

The toilet can be operated via side buttons or a remote control (if included).



Image: Detailed view of the side control panel, showing buttons for Hip Wash, Female Wash, Stop, Drying, Toilet Flush, and Night Light.

Emergency Flush:

In case of a power outage, the smart toilet supports manual flushing. This feature requires 9V batteries (not included).

MAINTENANCE

Regular maintenance ensures the longevity and hygienic operation of your smart toilet.

- **Self-Cleaning Nozzles:** The bidet nozzles feature UV-C technology for automatic sterilization, ensuring hygiene.
- **Exterior Cleaning:** Clean the exterior surfaces with a soft, damp cloth and mild, non-abrasive cleaner. Avoid harsh chemicals.
- **Filter System:** The triple-filter system helps maintain water purity. Refer to the full manual for filter replacement instructions (if applicable).



Image: An illustration demonstrating the UV-C sterilization process, showing UV light eliminating bacteria within the toilet bowl.

TROUBLESHOOTING

If you encounter issues with your WinZo Smart Toilet, refer to the following common solutions:

Problem	Possible Cause	Solution
No Power/Unit Unresponsive	Power cord unplugged, circuit breaker tripped, no 9V batteries for emergency flush.	Check power connection, reset circuit breaker, install 9V batteries for manual flush.
Bidet Not Spraying	Water supply valve closed, nozzle blocked.	Ensure water supply is open, clean the bidet nozzle.
Seat Not Heating	Heated seat function not activated, temperature setting too low.	Activate heated seat function via controls, increase temperature setting.
Auto Open/Close Not Working	Sensor obstructed or dirty.	Clean the sensor area.

For issues not listed here, please contact WinZo customer support.

OFFICIAL PRODUCT VIDEO

Watch the official WinZo product video for a visual guide to the smart toilet's features and operation.

Your browser does not support the video tag.

Video: An official WinZo video showcasing the smart toilet's features, including the starry night light, auto-open seat, heated seat, bidet functions, UV technology, and auto-flush. This video provides a comprehensive overview of the product's capabilities.

WARRANTY AND SUPPORT

WinZo products are manufactured to high-quality standards. For warranty information and customer support, please refer to the warranty card included with your purchase or visit the official WinZo website. You can also contact WinZo customer service for assistance with installation, operation, or troubleshooting.

Customer Support: For assistance, please visit the [WinZo Store on Amazon](#) or contact their support team directly.