

HUPEJOS V8PLUS

HUPEJOS V8PLUS 4 Channel Dash Cam Instruction Manual

Model: V8PLUS 4CH

1. INTRODUCTION

Thank you for choosing the HUPEJOS V8PLUS 4 Channel Dash Cam. This device is designed to provide comprehensive vehicle surveillance with its 360° field of view, 4K recording capabilities, and advanced features like Wi-Fi, GPS, voice control, and parking monitoring. Please read this manual carefully to ensure proper installation, operation, and maintenance of your dash cam.



Image: The HUPEJOS V8PLUS 4 Channel Dash Cam, showing its compact design and multiple camera lenses.

2. PACKAGE CONTENTS

Ensure all items listed below are present in your package:

- 1 x HUPEJOS V8PLUS Dash Cam
- 1 x Rear Camera
- 1 x 3M Adhesive Mount
- 1 x Type-C Power Cable
- 1 x 64GB SD Card (pre-inserted)
- 1 x CPL Filter
- 1 x 19.6ft Rear Camera Cable
- 1 x Car Wire Trim Tool
- 1 x User Manual
- 2 x Electrostatic Stickers

3. SETUP AND INSTALLATION

Follow these steps for proper installation of your dash cam:

1. **Prepare the Mounting Surface:** Wipe the pre-installed location on your front windshield with a clean cloth. Apply an electrostatic sticker to this position.
2. **Mount the Dash Cam:** Attach the dash cam to the electrostatic sticker on the windshield. Ensure it does not obstruct your view.
3. **Insert SD Card:** The 64GB SD card is typically pre-inserted. If not, gently insert the provided 64GB microSD card into the designated slot on the dash cam until it clicks into place. Ensure the card is inserted correctly to avoid damage.
4. **Connect Power:** Insert the Type-C power cable into the dash cam and connect the other end to your vehicle's 12V power outlet. Route the cable along the front windshield and A-pillar, using the car wire trim tool to hide it.
5. **Install Rear Camera (Optional):** If using the rear camera, wipe the pre-installed location on the rear windshield and apply an electrostatic sticker. Mount the rear camera and connect its cable to the main dash cam unit. Route the cable discreetly along the vehicle's interior.

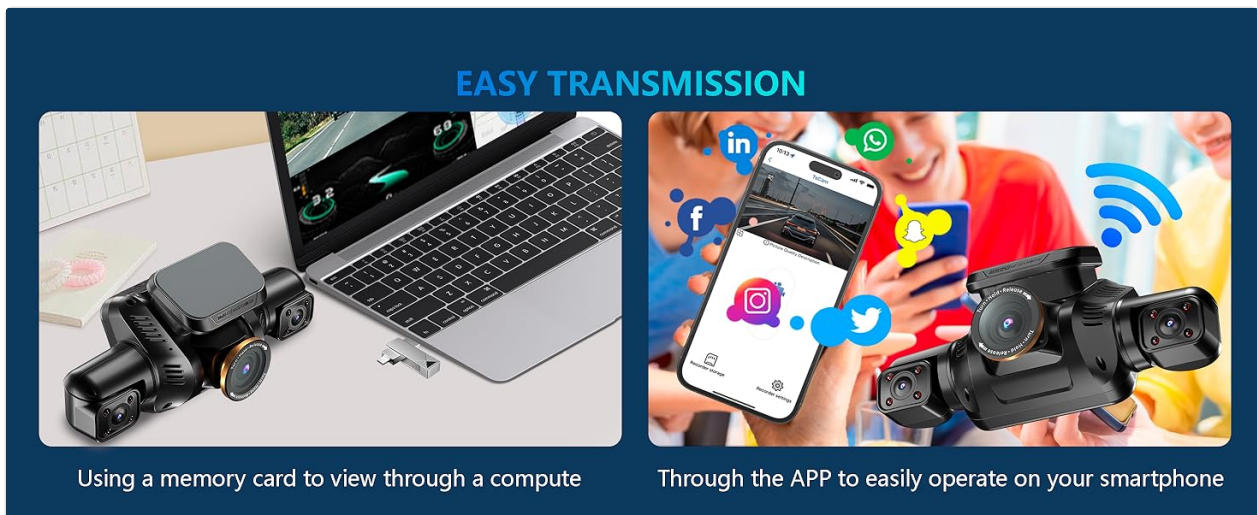


Image: Visual guide demonstrating the four steps for installing the dash cam and routing cables.



Image: Close-up of the dash cam showing the location for inserting the microSD card.

4. OPERATING INSTRUCTIONS

4.1 Power On/Off

The dash cam will automatically power on and begin recording when your vehicle starts. It will power off automatically when the vehicle is turned off.

4.2 Recording Modes

The V8PLUS offers 4-channel recording, monitoring the front, interior, and rear of the vehicle. You can choose

between two video recording modes:

- **4K + 1080P + 1080P:** Front camera records in 4K, while interior and rear cameras record in 1080P.
- **3K + 1080P + 1080P + 1080P:** Front camera records in 3K, and all three additional channels (left, right, rear) record in 1080P.



Image: Illustration of the four camera views (front, rear, left interior, right interior) and available recording modes.

4.3 Voice Control

Operate the dash cam hands-free using voice commands. Supported commands include:

- "Take Photo"
- "Start Video"
- "Video Stop"
- "Turn On Audio" / "Turn Off Audio"
- "Turn On WiFi" / "Turn Off WiFi"
- "Turn On Screen" / "Turn Off Screen"
- "Show Front Camera"

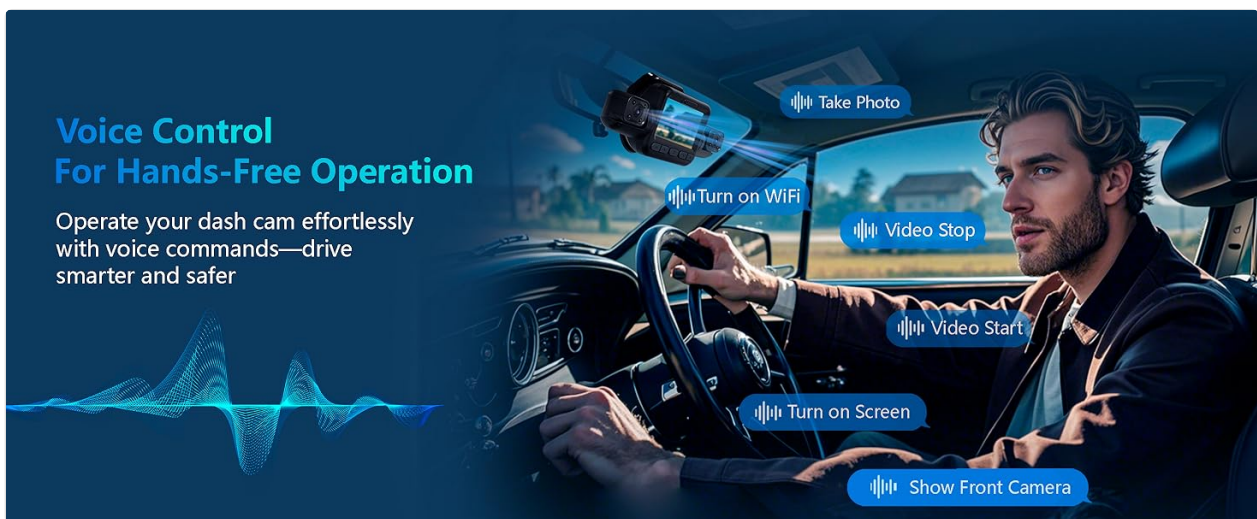


Image: A driver using voice commands to control the dash cam, illustrating hands-free operation.

4.4 Wi-Fi & App Control

The built-in 5GHz Wi-Fi allows for faster video transfer and real-time viewing on your smartphone (iPhone or Android) via the dedicated app. Download the app from your device's app store. The Wi-Fi range is

approximately 6-7 meters from the dash cam.



Image: Depicts a smartphone screen showing the dash cam app interface with live video feed and social media sharing options, alongside a laptop displaying GPS tracking.

4.5 GPS Tracking

The integrated GPS module records your vehicle's location, speed, and route. You can review this data on Google Maps using the GXPlayer software for Windows and Mac, or directly through the mobile app.

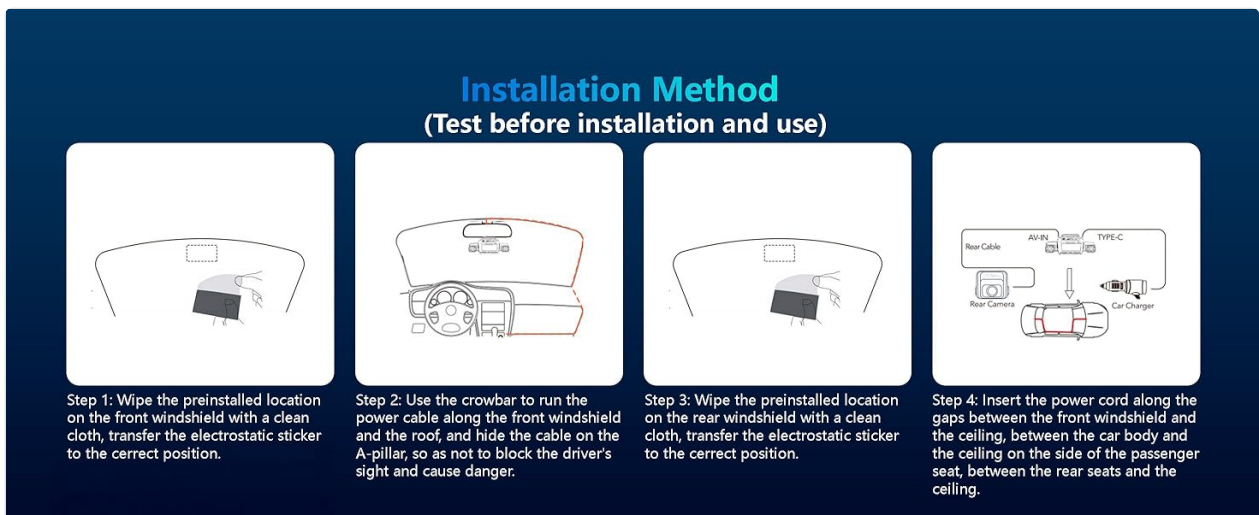


Image: A car driving on a winding road with GPS tracking points overlaid, illustrating the route recording feature.

4.6 Super Night Vision & CPL Filter

The dash cam features 8 IR lamps and 6-glass lenses with WDR technology to enhance image clarity in low-light conditions. The included CPL filter reduces glare and reflections, improving color saturation and overall video quality.

- To activate/deactivate IR LED, navigate to Menu-IRLED ON/OFF. If not set, it will operate automatically.

Durability

Heat-resistant 140°F 60°C

Cold-resistant -22°F -30°C

No Pollution

SUPER CAPACITOR
Reliable and Long-lasting Even in Extreme Temperatures

Image: Comparison of video quality in bright, WDR-enhanced, and dark conditions, highlighting the Super Night Vision feature.

SUPER NIGHT VISION

The infrared lights of camera light records clearly even at night. Advanced WDR technology auto optimizes imaging results in bright and dark areas

WDR 6G/F1.8 8 IR Lamp

Image: Side-by-side comparison of a car interior view with and without the CPL filter, demonstrating glare reduction and improved clarity.

4.7 Loop Recording & G-Sensor

The dash cam records in 3-minute segments. When the SD card is full, the oldest unlocked videos are overwritten. The built-in G-sensor automatically detects sudden impacts or collisions, locking the current footage to prevent it from being overwritten. These locked files are saved in the "Event" folder.

BUILT-IN GPS
In Addition to Recording Videos while Driving, You Can Also Record Driving Tracks

The time and place can be recorded with a certain degree of accuracy, the effectiveness as evidence in the event of an accident increases. The speed of a car can also be tracked, it is important evidence of compliance with the legal speed limit at the time of the accident.

Image: Illustrates the continuous loop recording process and how the G-sensor locks important event files, preventing them from being overwritten.

Including CPL Filter Reduces glare, boosts colors, and enhances image clarity



Image: Shows two cars after a collision with a lock icon, indicating the G-sensor automatically records and protects incident footage.

5. 24-HOUR PARKING MONITORING

When your vehicle is parked and turned off, the dash cam can enter parking mode for 24-hour surveillance. This function requires a separate hardwire kit (ASIN: B0BV2CJ5SW) for continuous power.

- **Collision Detection:** If a collision is detected, the camera will automatically power on and record a 1-minute protected video.
- **Radar Intelligent Monitoring:** In the car-off state, the system monitors objects within 3-4 meters. If movement is detected, it records for 1 minute. If movement continues, it records until the object leaves the monitored area, then shuts down.

Packing List



Image: Illustrates the dash cam detecting a collision while parked, with a hardwire kit shown as a requirement for this feature.



Image: Shows a person approaching a parked car, demonstrating the radar intelligent monitoring system in action, with the hardware kit requirement noted.

6. MAINTENANCE

6.1 General Care

- Keep the dash cam and lenses clean using a soft, dry cloth. Avoid abrasive cleaners.
- Ensure the dash cam is securely mounted to prevent vibrations or detachment.
- Avoid exposing the device to extreme temperatures for prolonged periods.

6.2 SD Card Management

- Regularly format the SD card (at least once a month) to maintain optimal performance and prevent data corruption.
- Use a high-quality microSD card (Class 10 or higher, U3 recommended) up to 256GB.
- Replace the SD card if you notice frequent errors or degraded performance.

7. TROUBLESHOOTING

Problem	Possible Cause	Solution
Dash cam does not power on.	No power supply; faulty cable; vehicle power outlet issue.	Check power cable connection. Ensure vehicle's 12V outlet is functional. Try a different power source if available.
Recording stops unexpectedly.	SD card full; SD card error; power interruption.	Format the SD card. Replace the SD card if errors persist. Ensure stable power connection.
Poor video quality.	Dirty lens; incorrect resolution settings; glare.	Clean the camera lenses. Adjust video resolution settings. Ensure CPL filter is clean and correctly installed.
Wi-Fi connection issues.	Out of range; incorrect app settings.	Ensure your smartphone is within 6-7 meters of the dash cam. Check Wi-Fi settings on both the dash cam and your phone.

Problem	Possible Cause	Solution
Voice control not responding.	Microphone obstructed; unrecognized command; voice control disabled.	Ensure the microphone is clear. Use exact commands listed in the manual. Check if voice control is enabled in settings.
Parking mode not working.	Hardwire kit not installed; incorrect settings.	Install the required hardwire kit (ASIN: B0BV2CJ5SW). Verify parking mode settings are correctly configured.

8. SPECIFICATIONS

Feature	Detail
Model Name	V8PLUS Dash Cam
Product Dimensions	17.7 x 6.44 x 7.85 cm
Weight	840 g
Video Capture Resolution	4K (Front), 1080P (Interior/Rear)
Field of View	360 Degrees (150 Degrees Real Angle of View per camera)
Connectivity Technology	5GHz Wi-Fi
Special Features	Voice Control, Built-in GPS, G-Sensor Lock, Loop Recording, Super Night Vision, 3" IPS Screen, APP Control, 24 Hours Radar Parking Mode, CPL Filter
Storage	Supports microSD up to 256GB (64GB included)
Mounting Type	Windshield Mount
Control Method	App, Voice
Display Type	LCD
Frame Rate	30 FPS
Operating Temperature	Heat-resistant (up to 60°C), Cold-resistant (down to -30°C)

9. PRODUCT VIDEOS

Your browser does not support the video tag.

Video: Overview of the HUPEJOS 4 Channel Dash Cam, demonstrating its 360-degree recording capabilities and various features.

Your browser does not support the video tag.

Video: Demonstration of the HUPEJOS 4 Channel Dash Cam's 360-degree view, 5G WiFi connectivity, and app control features.

10. WARRANTY AND SUPPORT

10.1 Warranty Information

The HUPEJOS V8PLUS Dash Cam comes with a one-year warranty from the date of purchase. This warranty covers manufacturing defects and malfunctions under normal use. Please retain your proof of purchase for warranty claims.

10.2 Customer Support

For technical assistance, troubleshooting, or warranty inquiries, please contact HUPEJOS customer support. Refer to the contact information provided in your product packaging or visit the official HUPEJOS website.