

GoveeLife H5108, H5192

GoveeLife Bluetooth Freezer Thermometer H5108 & Wireless Meat Thermometer H5192 User Manual

Comprehensive instructions for setup, operation, and maintenance.

1. INTRODUCTION

This manual provides detailed instructions for the GoveeLife Bluetooth Freezer Thermometer (Model H5108) and the GoveeLife Wireless Meat Thermometer (Model H5192). Please read this manual thoroughly before using the devices to ensure proper operation and to maximize their lifespan.

The bundle includes:

- 2 x GoveeLife Bluetooth Freezer Thermometers (H5108)
- 1 x GoveeLife Wireless Meat Thermometer (H5192) with 2 probes
- 1 x USB-C Charging Cable (for H5192)



Image 1: GoveeLife Bluetooth Freezer Thermometer H5108 (2 units) and Wireless Meat Thermometer H5192 bundle. The image shows two white square freezer thermometers with digital displays and a black rectangular meat thermometer base with two probes.

2. SAFETY INFORMATION

- Do not expose the devices to extreme temperatures outside their operating range.
- Keep devices away from water unless specified as waterproof (H5192 probes are waterproof).
- Do not attempt to disassemble or repair the devices yourself. Contact customer support for assistance.
- Keep out of reach of children.

3. SETUP

3.1 GoveeLife Bluetooth Freezer Thermometer (H5108)

1. **Battery Installation:** Open the battery compartment on the back of the thermometer and insert the required batteries (not included).

2. **Placement:** Place the thermometer inside your freezer or refrigerator. Ensure the display is visible for easy reading.

3. **App Connection:**

- Download the Govee Home App from the App Store or Google Play.
- Enable Bluetooth on your smartphone.
- Open the Govee Home App, tap the '+' icon, and search for H5108.
- Follow the in-app instructions to pair the device.

Fast and Accurate

$\pm 0.9^{\circ}\text{F}$

Temp Accuracy

2s

Refresh Frequency



Probe Operating Temp: $-40^{\circ}\text{F} \sim 158^{\circ}\text{F}$

Image 2: GoveeLife Bluetooth Freezer Thermometer H5108 placed inside a refrigerator, displaying temperature. The image also shows a smartphone screen with the Govee Home App displaying temperature data.

3.2 GoveeLife Wireless Meat Thermometer (H5192)

1. **Charging the Probes:** Insert the probes into the charging base. Connect the USB-C cable to the base and a power source to charge. A 25-minute charge provides up to 48 hours of operation.

2. **App Connection:**

- Ensure the Govee Home App is installed and Bluetooth/Wi-Fi are enabled on your smartphone.
- Open the Govee Home App, tap the '+' icon, and search for H5192.
- Follow the in-app instructions to pair the device via Bluetooth and connect to Wi-Fi for extended range.

3. **Probe Insertion:** Insert the meat probes into the thickest part of the food, avoiding bone or gristle.

Convenient to Place and Read

Strong Magnetic & Multifunctional LCD Screen

LCD



Image 3: GoveeLife Wireless Meat Thermometer H5192 charging base with probes inserted, connected via USB-C cable. The image highlights the 3000mAh battery and 48-hour operation after a 25-minute charge.

Accurate and Stable Monitoring

Simultaneously Monitor Internal and Ambient Temperature

Internal Sensors:

32°F to 212°F
(0 to 100°C)

Ambient Sensor:

32°F to 572°F
(0 to 300°C)

212°F

Internal Max

572°F

Ambient Max

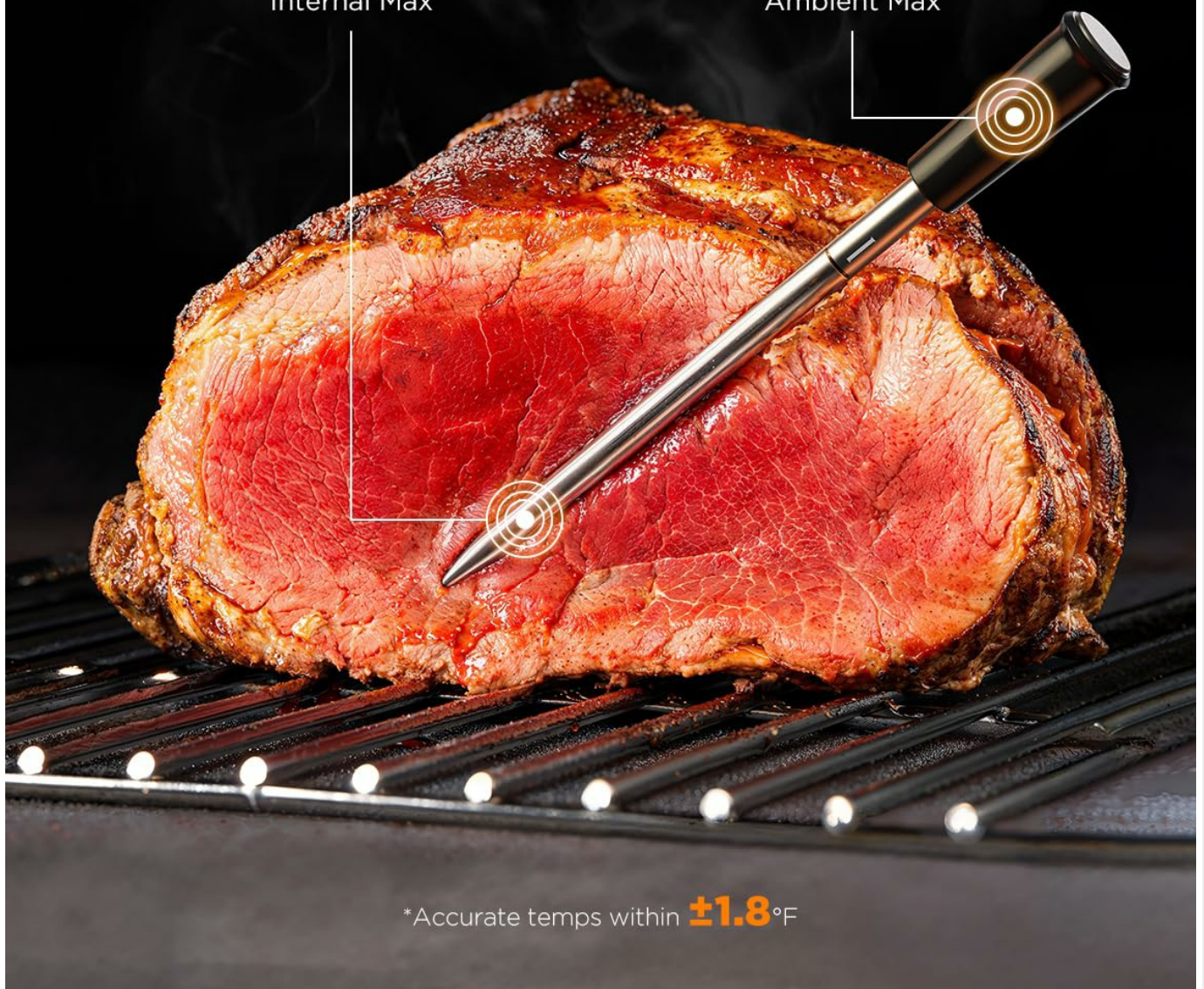


Image 4: GoveeLife Wireless Meat Thermometer H5192 probe inserted into a cut of meat, showing internal and ambient temperature monitoring. The image indicates internal sensor range of 32°F to 212°F and ambient sensor range of 32°F to 572°F.

4. OPERATING INSTRUCTIONS

4.1 GoveeLife Bluetooth Freezer Thermometer (H5108)

- **Temperature Display:** The LCD screen displays the current temperature. The refresh frequency is approximately 2 seconds with an accuracy of $\pm 0.9^{\circ}\text{F}$.
- **App Monitoring:** Use the Govee Home App to monitor temperature remotely, set alerts for temperature fluctuations, and view historical data for up to 2 years.
- **Alerts:** Configure temperature range alerts within the app to receive notifications if the temperature goes above or below your set thresholds.

Records Data for Up to 2 Years

Personalize your favorite temperature



Image 5: Close-up of the GoveeLife Bluetooth Freezer Thermometer H5108 digital display, showing temperature and battery indicators. The image highlights the $\pm 0.9^{\circ}\text{F}$ accuracy and 2-second refresh frequency.

Long-lasting Cooking Monitor

25 mins **probe** charge for 48 hours of operation



USB-C Port



Strong Magnet



Image 6: Smartphone screen displaying the Govee Home App interface for the GoveeLife Freezer Thermometer, showing temperature history and data export options. The app can record data for up to 2 years.

4.2 GoveeLife Wireless Meat Thermometer (H5192)

- **LCD Display:** The base unit features a 10-function LCD display showing internal and ambient temperatures, alert temperature, probe number, probe battery, base battery, and current temperature.

- **Smart Guided Cooking:** Use the Govee Home App to select from 28 USDA-preset temperature recommendations for various meats (beef, lamb, chicken, pork, turkey, etc.). The app provides real-time alerts.
- **Temperature Monitoring:** Monitor internal and ambient temperatures with an accuracy of $\pm 1.8^{\circ}\text{F}$ and updates every 3 seconds.
- **Connectivity:** The thermometer supports both Bluetooth (up to 328ft in open space) and Wi-Fi for stable and extended range monitoring via the Govee Home App.

Like a Pro Chef in Your Pocket

Select a reference temp or preset a temp you need

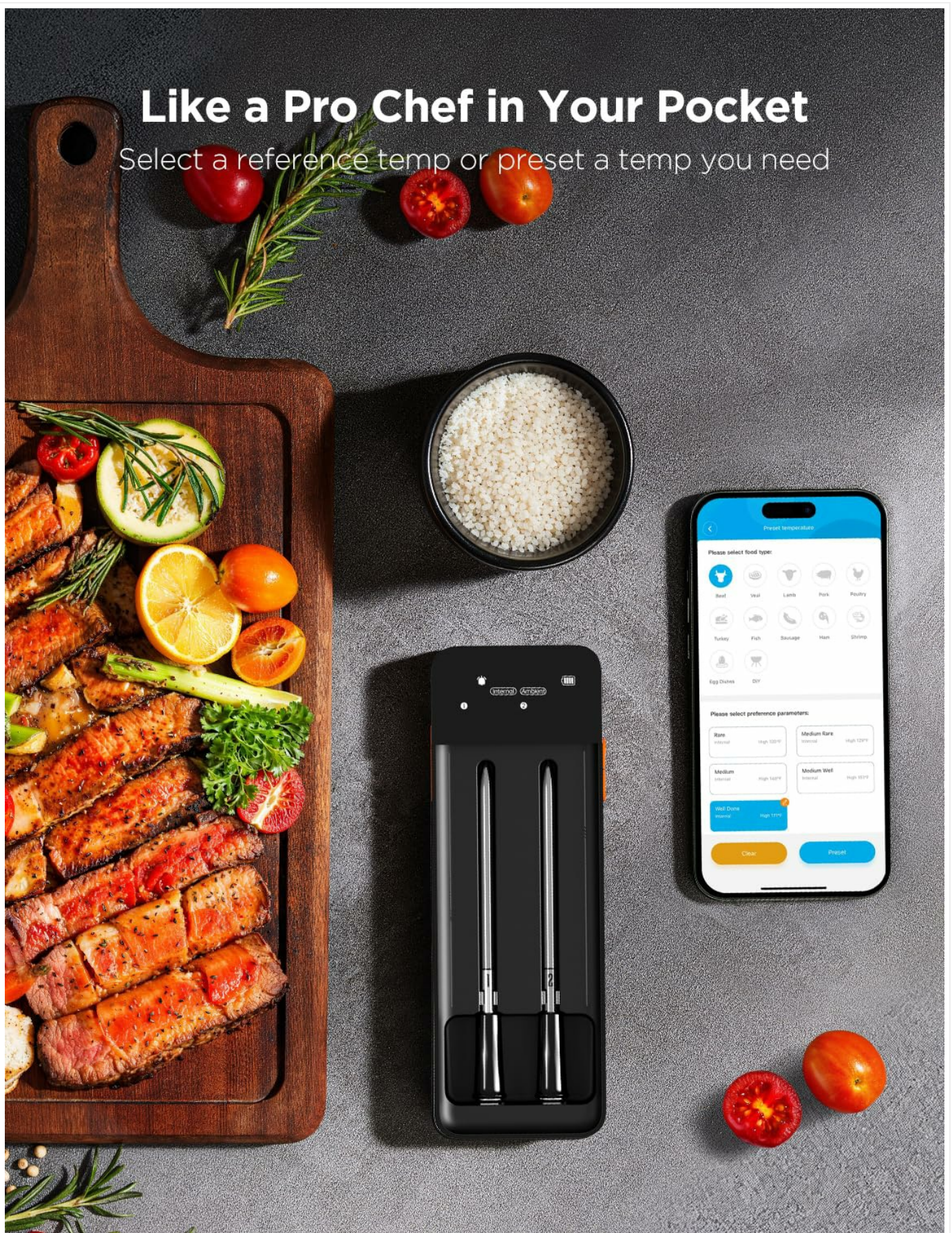


Image 7: Smartphone screen displaying the Govee Home App interface for the GoveeLife Wireless Meat Thermometer, showing options to select food type and preferred doneness (e.g., Rare, Medium Rare).

GoveeLife | Advanced Probe

500%↑

Faster Response

IP68

Waterproof



More Space-saving

Image 8: Close-up of the GoveeLife Wireless Meat Thermometer H5192 LCD display, detailing various indicators such as Wi-Fi signal, alarm mute, Bluetooth, preset temperature, probe base battery, internal/ambient temperature, probe number, probe battery, current temperature, and temperature unit.

Longer and More Stable Connection

Flawless cooking made easy. Precision. Range. Reliability



Tips:

- * In a relatively closed environment (such as an oven/microwave oven, etc.). Please keep the base and the probe connected at a close distance.
- * Probe and base can reach 328ft in open space



Image 9: Diagram illustrating the connectivity options for the GoveeLife Wireless Meat Thermometer H5192, showing Bluetooth range up to 328ft and unlimited Wi-Fi range via the Govee Home App.

5. MAINTENANCE

- **Cleaning:**

- **H5108 Freezer Thermometer:** Wipe with a soft, damp cloth. Do not immerse in water.
- **H5192 Meat Thermometer Probes:** The probes are waterproof. Clean with soap and water after each use. Ensure they are dry before storing.
- **H5192 Meat Thermometer Base:** Wipe with a soft, damp cloth. Do not immerse in water.
- **Battery Replacement (H5108):** Replace batteries when the low battery indicator appears on the display.
- **Charging (H5192):** Recharge the probes and base unit as needed.
- **Storage:** Store devices in a cool, dry place when not in use.

6. TROUBLESHOOTING

| Problem | Possible Cause | Solution |
|---------------------------------|---|--|
| Device not connecting to App | Bluetooth/Wi-Fi off; device out of range; low battery; App issue. | Ensure Bluetooth/Wi-Fi is on. Move device closer to phone/router. Charge/replace batteries. Restart App/device. |
| Inaccurate temperature readings | Improper probe placement (H5192); sensor obstruction; device malfunction. | Ensure H5192 probes are inserted correctly, avoiding bone. Clean sensors. Contact support if issue persists. |
| H5192 probes not charging | Loose connection; faulty cable/charger; dirty contacts. | Ensure probes are seated correctly. Try a different USB-C cable/charger. Clean charging contacts on probes and base. |

7. SPECIFICATIONS

7.1 GoveeLife Bluetooth Freezer Thermometer (H5108)

- **Model:** H5108
- **Connectivity:** Bluetooth
- **Temperature Accuracy:** $\pm 0.9^{\circ}\text{F}$
- **Refresh Frequency:** 2 seconds
- **Operating Temperature:** -40°F to 158°F
- **Data Storage:** Up to 2 years via Govee Home App

7.2 GoveeLife Wireless Meat Thermometer (H5192)

- **Model:** H5192
- **Connectivity:** Wi-Fi, Bluetooth
- **Internal Sensor Range:** 32°F to 212°F (0°C to 100°C)
- **Ambient Sensor Range:** 32°F to 572°F (0°C to 300°C)
- **Temperature Accuracy:** $\pm 1.8^{\circ}\text{F}$
- **Update Frequency:** Every 3 seconds
- **Probe Battery Life:** 48 hours (after 25 min charge)
- **Base Battery Capacity:** 3000mAh
- **Special Features:** High Accuracy, Smart Guided Cooking, Magnetic Base, LCD Screen
- **Outer Material:** Plastic/Silicone

8. WARRANTY AND SUPPORT

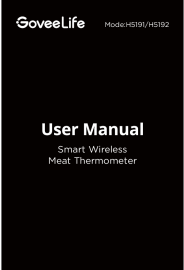


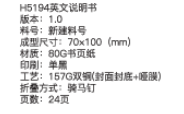

For warranty information and technical support, please visit the official GoveeLife website or contact their customer service directly. Details can typically be found on the product packaging or within the Govee Home App.

GoveeLife Store: [Visit GoveeLife Store on Amazon](#)



© 2025 GoveeLife. All rights reserved.

Related Documents - H5108, H5192

| | |
|---|---|
|  | <p>GoveeLife H5191/H5192 Smart Wireless Meat Thermometer User Manual</p> <p>Comprehensive user manual for the GoveeLife H5191/H5192 Smart Wireless Meat Thermometer, covering safety instructions, package contents, setup, operation, troubleshooting, and specifications. Learn how to use your smart meat thermometer for accurate cooking temperatures.</p> |
|  | <p>GoveeLife Wireless Meat Probe Quick Start Guide - H5191/H5192</p> <p>Get started with your GoveeLife Smart Wireless Meat Thermometer probe (models H5191, H5192). Download the Govee Home app and set up your device for easy cooking.</p> |
|  | <p>GoveeLife Smart Thermometer R1 User Manual (H5108+H5151)</p> <p>User manual for the GoveeLife Smart Thermometer R1 with Wi-Fi Gateway (Models H5108 and H5151), covering setup, specifications, troubleshooting, and customer service.</p> |
|  | <p>GoveeLife H5194 Smart Wireless Meat Thermometer User Manual</p> <p>This user manual provides comprehensive instructions for the GoveeLife H5194 Smart Wireless Meat Thermometer. It covers safety precautions, package contents, device overview, setup, operation, troubleshooting, specifications, and compliance information for effective meat temperature monitoring.</p> |
|  | <p>GoveeLife H5171 Portable Thermo-Hygrometer User Manual</p> <p>User manual for the GoveeLife H5171 portable thermo-hygrometer. This IP65 waterproof device features an LCD display, 197ft Bluetooth range, notification alerts, and 2 years of data storage export. Ideal for monitoring temperature and humidity in rooms, patios, greenhouses, and camping. Learn setup, usage, and troubleshooting via the Govee Home app.</p> |

| | |
|--|--|
| <div><div>GoveeLife</div><div>User Manual</div><div>Model: H5104 Smart Thermo-Hygrometer</div></div> | <div>GoveeLife H5104 Smart Thermo-Hygrometer User Manual</div> <div>User manual for the GoveeLife H5104 Smart Thermo-Hygrometer. Learn how to use the device, connect to the Govee Home app, and troubleshoot common issues.</div> |
|--|--|