

## slopehill 1902

# slopehill Professional Ionic Hair Dryer Model 1902 User Manual

Powerful 1800W Fast Drying Low Noise Blow Dryer

## 1. IMPORTANT SAFETY INSTRUCTIONS

Please read all instructions before using this appliance. When using electrical appliances, especially when children are present, basic safety precautions should always be followed, including the following:

- Keep out of reach of children.
- Do not use near water.
- Be cautious of overheating.
- Do not use while bathing.
- Always unplug the appliance immediately after using.
- Do not place or store appliance where it can fall or be pulled into a tub or sink.
- Do not place in or drop into water or other liquid.
- If an appliance falls into water, unplug it immediately. Do not reach into the water.

## 2. PRODUCT OVERVIEW

The slopehill Professional Ionic Hair Dryer Model 1902 is designed for efficient and gentle hair drying. It features an 1800W motor, ionic technology, and intelligent temperature control to protect your hair from excessive heat.



The slopehill Professional Ionic Hair Dryer Model 1902, shown with its included styling accessories: two concentrator nozzles and a diffuser.

### Key Features:

- **Powerful 1800W AC Motor:** Provides strong airflow for fast drying.
- **Ionic Technology:** Emits 30 million negative ions to reduce static, frizz, and enhance shine.
- **Intelligent Temperature Control:** Maintains a constant 57°C to prevent overheating and hair damage.
- **Low Noise Design:** Engineered for quieter operation.
- **Bio-ceramic Technology:** Releases far-infrared rays to transform dry hair into smooth hair.
- **Compact and Lightweight:** Easy to handle and ideal for travel.



## Powerful Ac Motor Core + Unique Inner Tube Design

Make it safer, quieter, lighter and  
more powerful



Safety



Durable



Heat  
resistant



Mute



Light

An internal diagram illustrating the powerful AC motor and unique inner tube design, contributing to safer, quieter, lighter, and more powerful operation.

# 30 MILLION NEGATIVE IONS

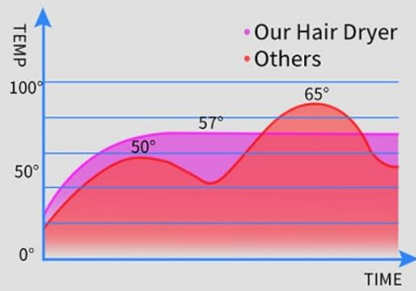
Reduce Static, Make Hair  
Shiny And Smooth



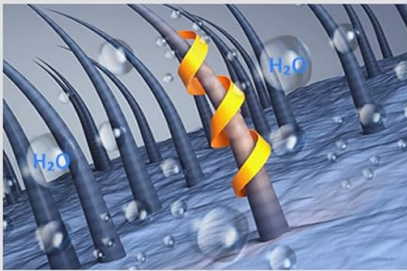
Illustrates the effect of 30 million negative ions, reducing static and leaving hair shiny and smooth, with before-and-after examples.



## Intelligent Temperature Control To Prevent Overheating Damage



▲ 57°C Constant temperature



▲ Bio-ceramic technology  
releasing far-infrared rays  
changing hair from dry to smooth



A graphic explaining the intelligent temperature control system, which maintains a constant 57°C to prevent heat damage, complemented by bio-ceramic technology for smooth hair.

### 3. PACKAGE CONTENTS

- 1 x slopehill Professional Ionic Hair Dryer Model 1902
- 2 x Concentrator Nozzles (Smooth and Styling)
- 1 x Diffuser Attachment



The slopehill hair dryer and its various attachments, including concentrator nozzles and a diffuser, neatly presented in its packaging.

## 4. SETUP

### Attaching/Detaching Nozzles:

1. Ensure the hair dryer is unplugged and cool before attaching or detaching any accessories.
2. Align the desired nozzle (concentrator or diffuser) with the front of the hair dryer.
3. Gently push the nozzle onto the hair dryer until it clicks securely into place.
4. To remove, gently pull the nozzle away from the hair dryer.

## 3 DIFFERENT CONCENTRATOR NOZZLES

### • SMOOTH NOZZLE

Dries hair with smooth airflow to create a natural finish.



### • STYLING NOZZLE

Creates a high-velocity blade of airflow for styling perfectly.

### • DIFFUSER NOZZLE

Engineered to disperse air more evenly and smooth around curls and wave.



This image demonstrates the three included nozzles: a smooth nozzle for natural finishes, a styling nozzle for precise airflow, and a diffuser nozzle for enhancing curls and waves.

## 5. OPERATING INSTRUCTIONS

### Controls:



Detailed view of the hair dryer's controls: a cool shot button, a slider for hot, warm, and cool airflow settings, and a convenient hang loop for storage.

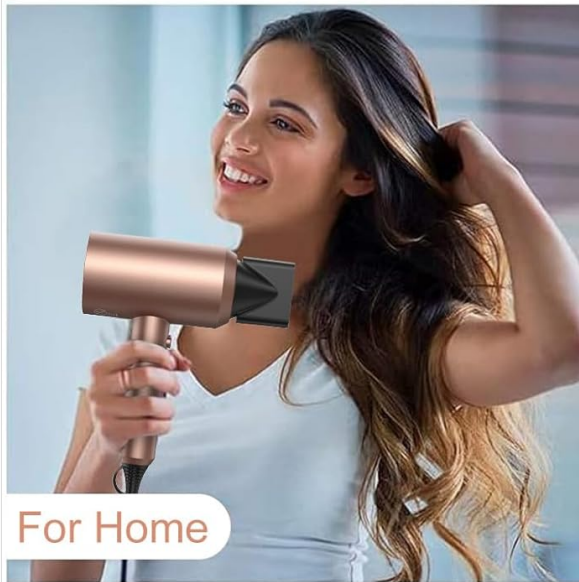
- **Power On/Off:** Slide the main switch to '0' for off, 'I' for low speed, or 'II' for high speed.
- **Temperature Settings:** Use the temperature button to cycle through cool (snowflake icon), warm (single wave icon), and hot (triple wave icon) settings.
- **Cool Shot Function:** Press and hold the 'Cool Shooting Button' (top button) for a burst of cool air to set your style.

### Usage Tips:

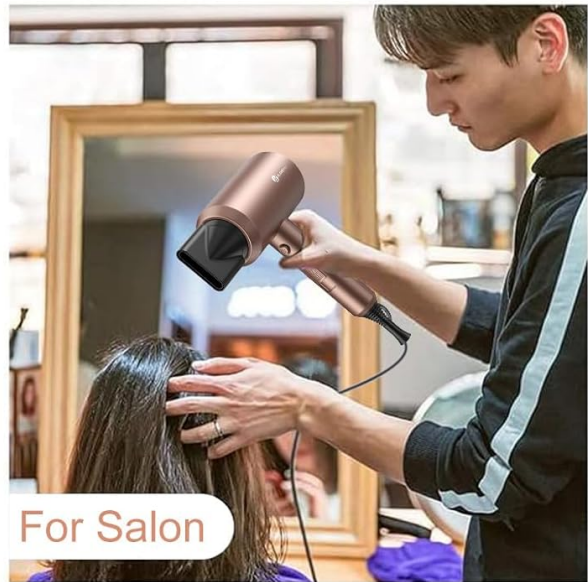
- **For Fast Drying:** Use the high-speed and hot temperature settings.
- **For Smoothing/Styling:** Attach a concentrator nozzle. Use the warm setting for controlled styling.
- **For Curls/Waves:** Attach the diffuser. Use low speed and warm or cool settings to gently dry and define curls without frizz.
- **To Finish:** Use the cool shot function to seal the hair cuticle, adding shine and setting your style.



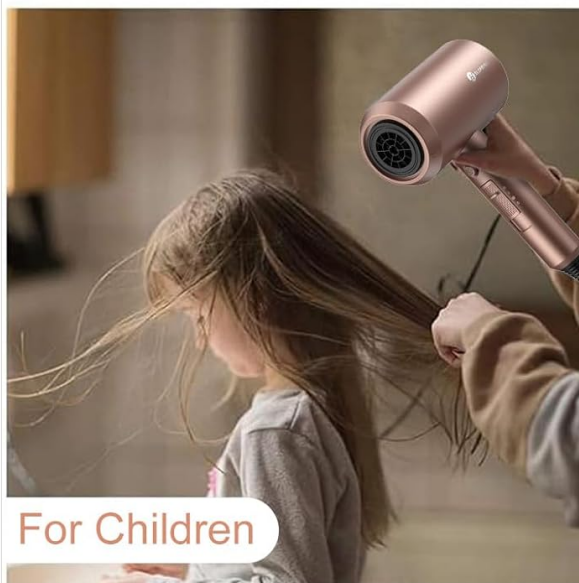
## SAFE RADIATION FREE



For Home



For Salon



For Children



For Pregnancy

Depicts the hair dryer being used in various settings, including home, salon, and by children and pregnant individuals, highlighting its safe, radiation-free operation.

## 6. MAINTENANCE

Regular cleaning ensures optimal performance and extends the life of your hair dryer.

- **Cleaning the Air Filter:** Periodically check and clean the rear air filter to prevent dust and hair buildup, which can reduce airflow and cause overheating.
- Ensure the appliance is unplugged and cool.
- Gently twist or open the rear filter cover (refer to product diagram if unsure).
- Remove any accumulated dust or lint using a soft brush or cloth.
- Replace the filter cover securely.
- **General Cleaning:** Wipe the exterior of the hair dryer with a soft, damp cloth. Do not use abrasive cleaners or solvents.

## 7. TROUBLESHOOTING

- **Appliance does not turn on:** Ensure the power cord is securely plugged into a working electrical outlet. Check the circuit breaker if necessary.
- **Low airflow or overheating:** The air filter may be clogged. Refer to the 'Maintenance' section for cleaning instructions.
- **Hair is frizzy after drying:** Ensure you are using the ionic function (it's always on) and consider using the cool shot to seal the hair cuticle.
- **Attachments do not stay on:** Ensure the attachments are correctly aligned and twisted/pushed firmly into place.

## 8. SPECIFICATIONS

Feature	Detail
Brand	slopehill
Model	1902
Wattage	1800 watts
Power Source	Corded Electric
Material	Plastic
Product Dimensions	2 x 8 x 2 inches
Product Weight	1.94 Pounds

## 9. WARRANTY AND SUPPORT

For warranty information and customer support, please refer to the official slopehill website or contact their customer service directly. Keep your purchase receipt for any warranty claims.