

## Kegaudio Portable Bluetooth Rechargeable CD Player

# Kegaudio Portable Bluetooth Rechargeable CD Player Instruction Manual

Model: Portable Bluetooth Rechargeable CD Player

## 1. INTRODUCTION

---

Thank you for choosing the Kegaudio Portable Bluetooth Rechargeable CD Player. This device offers multiple audio playback options, including CD, Bluetooth, FM radio, USB, and AUX input, in a versatile desktop or wall-mountable design. This manual provides detailed instructions for safe operation, setup, and maintenance to ensure optimal performance.

## 2. PRODUCT OVERVIEW

---

### Key Features:

- **All-in-One Functionality:** Desktop/Wall CD Player with 1800mAh battery, Bluetooth Hi-Fi Speaker, FM radio, USB Flash Drive Player, and 3.5mm audio player.
- **CD Compatibility:** Supports CD, CD-R, CD-RW, CD-MP3, CD-WMA formats.
- **Bluetooth 5.0:** Functions as both a Bluetooth transmitter (for headphones/speakers) and receiver (for mobile devices/tablets).
- **Versatile Placement:** Designed for desktop use with an integrated stand or wall mounting to save space.
- **Rechargeable Battery:** Built-in 1800mAh lithium battery for portable use, rechargeable via USB-C.
- **Removable Dust Cover:** Protects the CD mechanism from dust and allows easy disc placement.
- **Remote Control:** Operates the player from a distance (within 5 meters).
- **Additional Functions:** A-B repeat for language learning, prenatal education, and early education.

### What's in the Box:

- Kegaudio Portable CD Player

- USB Charging Cable
- Remote Control
- Wall Mount Kit
- User Manual

## Multifunctional CD Player Portable

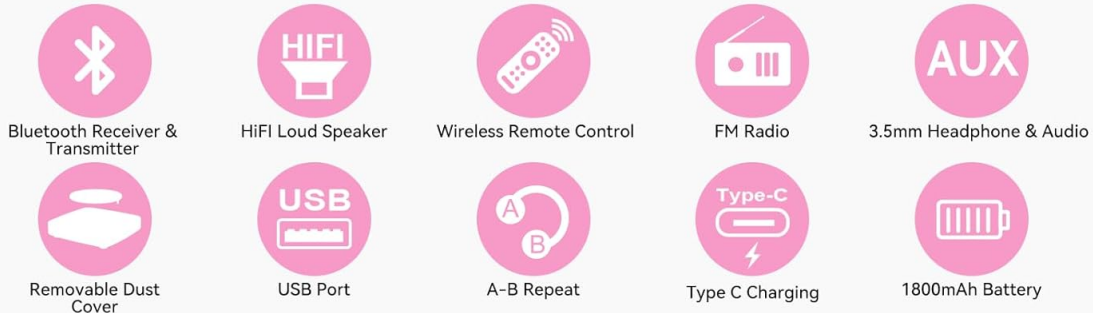


Image: Overview of the Kegaudio CD Player's multifunctional capabilities, including Bluetooth, HiFi speakers, remote control, FM radio, AUX, removable dust cover, USB port, A-B repeat, Type-C charging, and 1800mAh battery.

### 3. SAFETY INFORMATION

Please read and understand all safety instructions before using this product. Keep this manual for future reference.

- Do not expose the device to rain, moisture, or extreme temperatures.
- Avoid placing the device near heat sources such as radiators, heat registers, stoves, or other heat-producing appliances.
- Use only the provided charging cable and power adapter (if included) to prevent damage.
- Do not attempt to disassemble, repair, or modify the unit yourself. Refer all servicing to qualified

personnel.

- Keep the device away from strong magnetic fields.
- Ensure proper ventilation when operating the device.
- Dispose of batteries and electronic components responsibly according to local regulations.

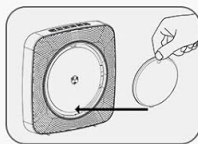
## 4. SETUP

### 4.1 Charging the Device

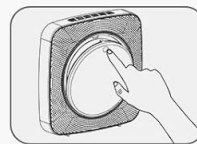
The CD player features a built-in 1800mAh rechargeable lithium battery. Before first use, fully charge the device.

1. Connect the included USB charging cable to the Type-C charging port on the side of the CD player.
2. Connect the other end of the USB cable to a standard USB power adapter (not included) or a computer USB port.
3. The power indicator light will illuminate during charging. A full charge takes approximately 3.5 hours.

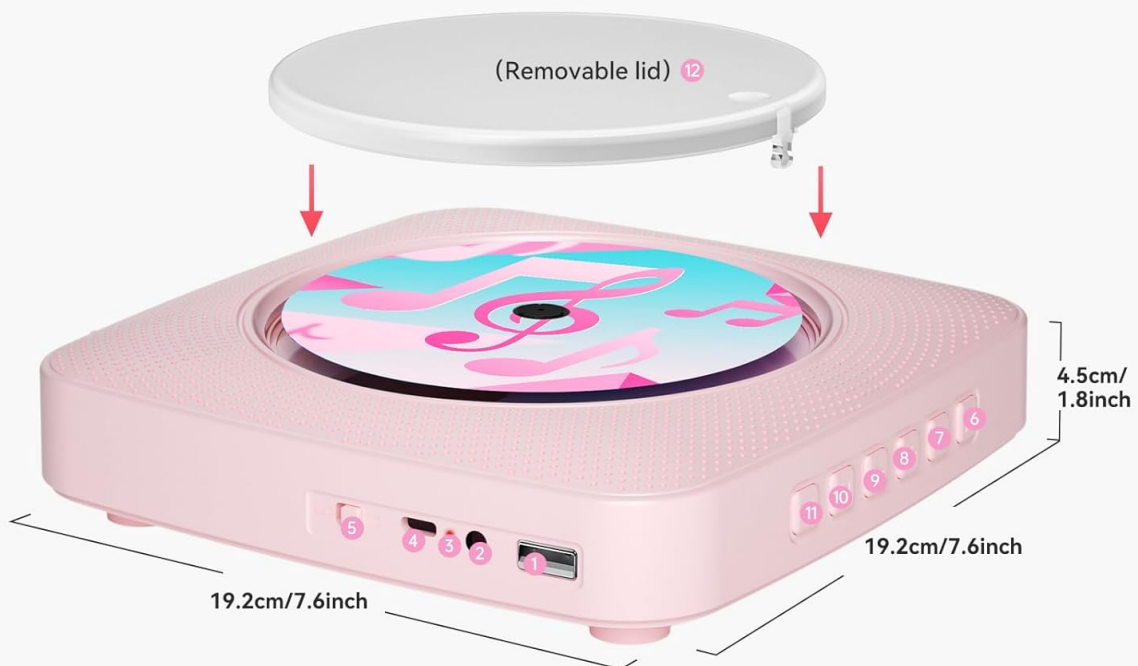
## Removable Dust Cover



1. Align the bottom of the lid with the player's slot and insert it.



2. Press down on the circle on the lid, when you hear a "click" sound, the installation is complete.



- |                        |                |                           |
|------------------------|----------------|---------------------------|
| ① USB Port             | ⑤ Power switch | ⑨ Previous song/fast back |
| ② Earphones port       | ⑥ Mode         | ⑩ Play/pause              |
| ③ Power indicator      | ⑦ Volume-      | ⑪ Next song/fast forward  |
| ④ Type-C charging port | ⑧ Volume+      | ⑫ dust cover              |

Image: The Kegaudio CD Player connected to a USB-C charging cable, highlighting its rechargeable feature and portability.

## 4.2 Placement Options

The Kegaudio CD player can be used as a desktop unit or mounted on a wall.

### Desktop Placement:

The player includes an integrated stand. Simply place the unit on a flat, stable surface such as a desk or table.

### Wall Mounting:

Use the provided wall mount kit to secure the player to a wall.

1. Choose a suitable location on the wall.
2. Attach the wall mount bracket to the wall using screws (not included, or use provided if applicable).
3. Align the back of the CD player with the mounted bracket and slide it down until it clicks securely into place.



Image: The Kegaudio CD Player shown in various desktop settings, demonstrating its versatility for home use.

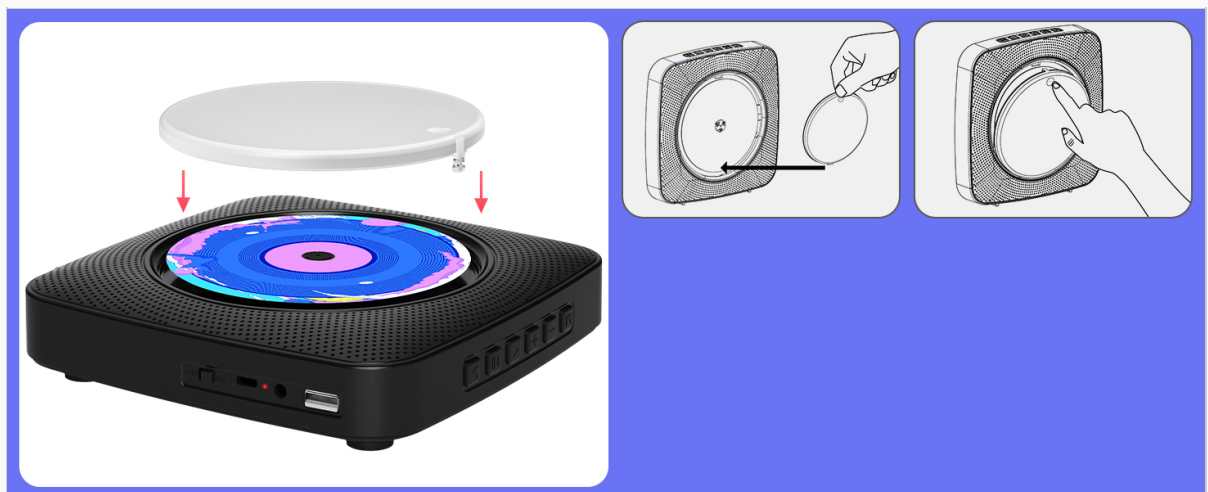


Image: Detailed diagram illustrating the process of installing the Kegaudio CD Player on a wall using the provided bracket.

## 4.3 Installing/Removing the Dust Cover

The CD player features a removable dust cover to protect the disc and mechanism.

1. **To Install:** Align the bottom of the dust cover with the player's slot and insert it. Press down on the circular center of the lid until you hear a 'click' sound, indicating secure installation.
2. **To Remove:** Gently lift the dust cover from the edges.



Image: Diagram illustrating the installation of the removable dust cover and labeling the control buttons and ports on the Kegaudio CD Player.

## 5. OPERATING INSTRUCTIONS

---

### 5.1 Power On/Off

Press the **Power Switch** button (labeled '5' in the diagram) to turn the device on or off.

### 5.2 CD Playback

1. Ensure the device is powered on.
2. If the dust cover is installed, remove it.

3. Carefully place a CD (CD, CD-R, CD-RW, CD-MP3, CD-WMA) onto the spindle, ensuring it is centered.
4. Replace the dust cover if desired.
5. Press the **Mode** button (labeled '6') until 'CD' mode is selected. The player will automatically begin playing the CD.
6. Use the **Play/Pause** button (labeled '10') to pause or resume playback.
7. Use the **Previous Song/Fast Back** (labeled '9') and **Next Song/Fast Forward** (labeled '11') buttons to navigate tracks or fast forward/rewind.
8. Adjust volume using the **Volume-** (labeled '7') and **Volume+** (labeled '8') buttons.

## 5.3 Bluetooth Modes

The Kegaudio CD player supports both Bluetooth transmission and reception.

### 5.3.1 Bluetooth Transmitter Mode (Connecting to Bluetooth Headphones/Speakers):

1. Ensure the CD player is in CD playback mode.
2. Activate pairing mode on your Bluetooth headphones or speaker.
3. On the CD player, press and hold the **Play/Pause** button (labeled '10') to initiate Bluetooth transmission. The player will search for nearby Bluetooth devices.
4. Once connected, audio from the CD player will be transmitted to your Bluetooth device.

# Bluetooth Transmitter

Listen to CD Music/Audio with Wireless headphone or Bluetooth Speaker



# Bluetooth Receiver

Enjoy Your Wireless Music & App audio from Smartphone App/ MP3/MP4/Desktop!



Image: The Kegaudio CD Player functioning as a Bluetooth transmitter, sending audio to wireless headphones and a Bluetooth speaker.

## 5.3.2 Bluetooth Receiver Mode (Playing Audio from Phone/Tablet):

1. Press the **Mode** button (labeled '6') until 'Bluetooth' mode is selected. The player will enter pairing mode.
2. On your mobile phone, tablet, or other Bluetooth-enabled device, search for available Bluetooth devices and select 'Kegaudio CD Player' (or similar name) to connect.
3. Once connected, you can play audio from your device through the Kegaudio CD player's speakers.

# CD Player with Speakers

## Hifi Loud Dual Speakers



Image: The Kegaudio CD Player acting as a Bluetooth receiver, playing audio from a smartphone, MP3 player, or laptop.

### 5.4 FM Radio

1. Press the **Mode** button (labeled '6') until 'FM' mode is selected.
2. Use the **Previous Song/Fast Back** (labeled '9') and **Next Song/Fast Forward** (labeled '11') buttons to scan for radio stations.
3. The FM radio supports frequencies from 76MHz to 108.0MHz.

# Rechargeable CD Player Portable

Built-in 1800 mAh Rechargeable Battery



Support AUX input & USB Flash Drive Files Playing

Image: The Kegaudio CD Player operating in FM radio mode, displaying the supported frequency range.

## 5.5 USB Flash Drive Playback

1. Insert a USB flash drive into the **USB Port** (labeled '1').
2. Press the **Mode** button (labeled '6') until 'USB' mode is selected.
3. The player will automatically detect and play audio files from the USB drive.
4. Use the playback controls (Play/Pause, Previous/Next) as with CD playback.

## 5.6 3.5mm AUX Input

1. Connect an external audio device (e.g., MP3 player, smartphone) to the **Earphones Port** (labeled '2') using a 3.5mm audio cable (not included).
2. Press the **Mode** button (labeled '6') until 'AUX' mode is selected.
3. Play audio from your external device, and it will be output through the CD player's speakers.

## 5.7 Remote Control

The included remote control allows convenient operation of the CD player from a distance.

- Ensure the remote control has a working battery.

- Point the remote control towards the front of the CD player.
- Functions include Power On/Off, Mode selection, Volume adjustment, Play/Pause, Skip tracks, A-B Repeat, and numerical track selection.



Image: Detailed layout of the Kegaudio CD Player's remote control, indicating the function of each button.

## 5.8 A-B Repeat Function

The A-B repeat function is useful for language learning or repeating specific sections of audio.

1. During CD or USB playback, press the **A-B Repeat** button on the remote control at the desired starting point (A).
2. Press the **A-B Repeat** button again at the desired ending point (B).
3. The section between A and B will repeat continuously.
4. Press the **A-B Repeat** button a third time to cancel the function.

## 6. MAINTENANCE

---

### 6.1 Cleaning the Device

- Always power off and unplug the device before cleaning.
- Use a soft, dry cloth to wipe the exterior of the player.
- For stubborn dirt, slightly dampen the cloth with water and then wipe dry immediately.
- Do not use abrasive cleaners, waxes, or solvents as they may damage the finish.
- To clean the CD lens, use a specialized CD lens cleaning kit. Do not touch the lens directly.

### 6.2 Dust Cover Care

The removable dust cover helps protect the CD mechanism. Keep it clean and ensure it is properly installed when not changing discs to prevent dust accumulation.

## 7. TROUBLESHOOTING

If you encounter issues with your Kegaudio CD player, refer to the following common problems and solutions:

Problem	Possible Cause	Solution
Player does not power on.	Battery is depleted.	Charge the device using the USB-C cable.
CD does not play or skips.	CD is dirty, scratched, or inserted incorrectly. Player is in the wrong mode.	Clean the CD, check for scratches. Reinsert the CD correctly. Ensure the player is in 'CD' mode.
No sound from speakers.	Volume is too low or muted. Wrong mode selected.	Increase volume. Check if the correct mode (CD, Bluetooth, FM, USB, AUX) is selected.
Bluetooth device cannot connect.	Player not in Bluetooth pairing mode. Device too far.	Ensure player is in Bluetooth receiver mode or transmitter pairing mode. Move devices closer. Restart both devices.
Remote control not working.	Battery depleted. Obstruction between remote and player.	Replace remote control battery. Ensure clear line of sight to the player.
FM radio reception is poor.	Weak signal.	Relocate the player to an area with better reception.

## 8. SPECIFICATIONS

---

- **Product Dimensions:** 5 x 2 x 2 inches
- **Item Weight:** 1.68 pounds
- **Battery:** 1800mAh Nonstandard Battery (included)
- **Connectivity Technology:** Auxiliary, Bluetooth, USB
- **Speaker Type:** Stereo
- **FM Radio Frequency:** 76MHz-108.0MHz
- **Supported CD Formats:** CD, CD-R, CD-RW, CD-MP3, CD-WMA
- **Manufacturer:** Kegaudio

## 9. WARRANTY AND SUPPORT

---

Kegaudio products are designed for reliability and performance. For any questions, technical support, or warranty inquiries, please refer to the contact information provided with your purchase or visit the official Kegaudio website. Please retain your proof of purchase for warranty claims.

