

## Manuals+

[Q & A](#) | [Deep Search](#) | [Upload](#)

manuals.plus /

- › [EWH](#) /
- › [EWH Stainless Steel Grease Tray/Grease Tray for Landmann Triton 3.0/3.1 & 4.1 Stainless Steel \(60 x 33 x 1.0 cm\)](#)

**EWH W20711-2**

# EWH Stainless Steel Grease Tray User Manual

Model: W20711-2

## 1. PRODUCT OVERVIEW

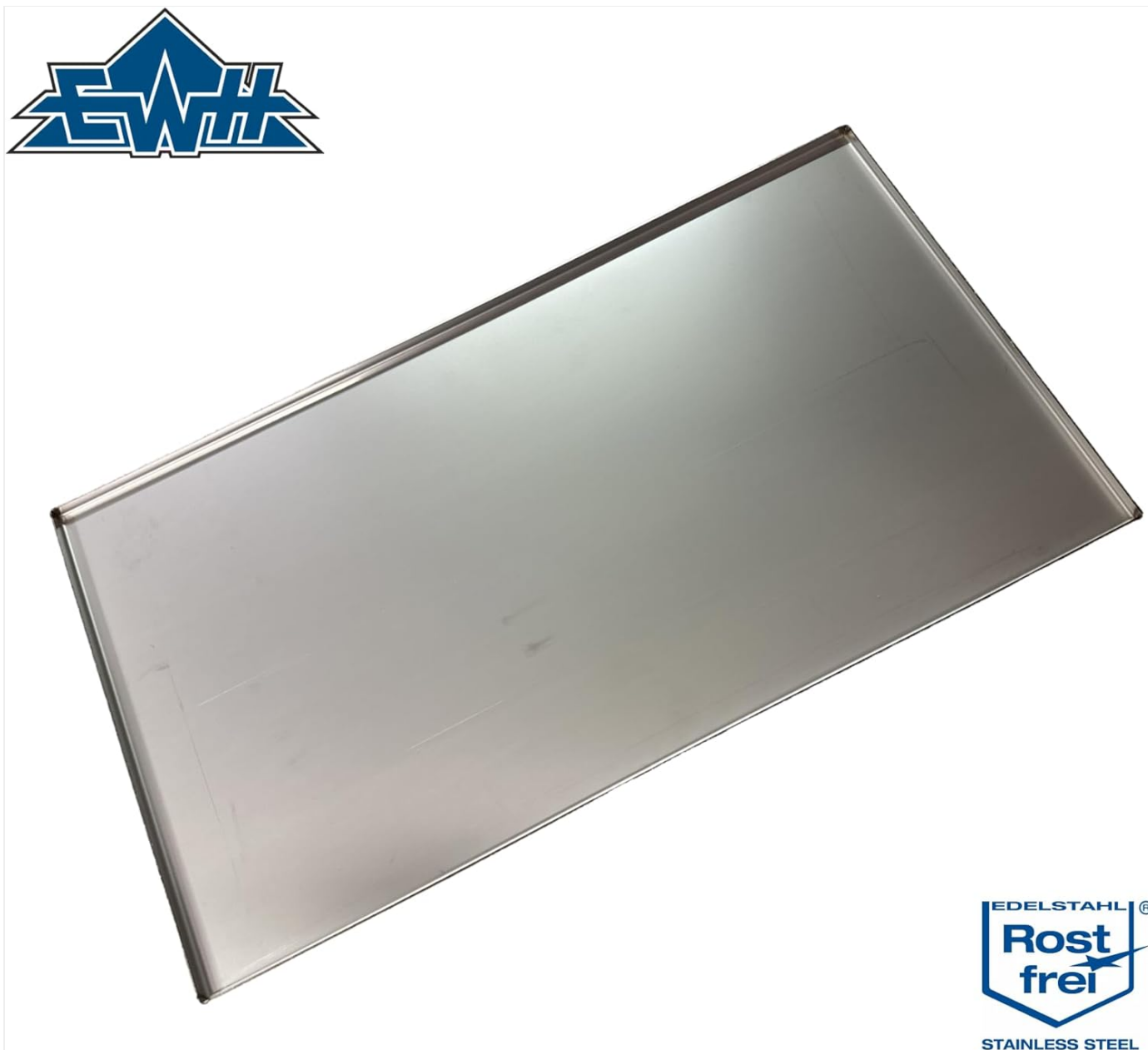
---

The EWH Stainless Steel Grease Tray is a high-quality, durable replacement part designed for Landmann Triton 3.0, 3.1, and 4.1 grill models. Manufactured in Germany from solid 1.4301 / V2A stainless steel, this tray offers a corrosion-resistant alternative to standard coated sheet steel. Its robust construction ensures longevity and reliable performance in collecting grease during grilling.

This product is specifically engineered to be a compatible replacement for the original grease burner cover, providing a perfect fit and burr-free finish. It measures 60 x 33 x 1 cm (Length x Width x Height). Please note that this specific model does not feature a drain, as practical experience has shown this design to be more effective for its intended purpose.



**Figure 1.1:** The EWH Stainless Steel Grease Tray, showcasing its sleek, rectangular design and metallic finish. This image provides a clear view of the tray's surface and raised edges.



**Figure 1.2:** The EWH Stainless Steel Grease Tray, featuring the EWH brand logo in the upper left corner and "EDELSTAHL ROSTFREI STAINLESS STEEL" text in the lower right. This view highlights the product's material quality and branding.

## 2. SETUP AND INSTALLATION

---

The EWH Stainless Steel Grease Tray is designed for straightforward installation as a direct replacement part.

- 1. Compatibility Check:** Before installation, ensure your grill model is a Landmann Triton 3.0, 3.1, or 4.1. This tray is specifically designed for these models.
- 2. Measure and Compare:** It is crucial to measure the dimensions of your existing grease tray or the designated area within your grill. The EWH tray measures 60 cm (Length) x 33 cm (Width) x 1 cm (Height). Compare these dimensions with your old burner covers to prevent unnecessary returns and ensure a perfect fit.
- 3. Removal of Old Tray:** Carefully remove the old grease tray from your grill. Ensure the grill is completely cool and disconnected from any fuel source before proceeding.
- 4. Placement of New Tray:** Position the EWH Stainless Steel Grease Tray into the designated slot or area within your Landmann Triton grill. Ensure it sits securely and level to effectively collect grease.

No tools are typically required for the installation of this replacement part, as it is designed for a drop-in fit.

### 3. OPERATION

---

The EWH Stainless Steel Grease Tray operates passively by collecting grease and drippings that fall from the grill grates during cooking. Its primary function is to contain these byproducts, preventing them from accumulating within the grill's internal components and reducing flare-ups.

- **Grease Collection:** As food cooks, fats and oils will drip onto the tray. The tray's design ensures these liquids are contained.
- **Heat Distribution:** While primarily for grease collection, the tray also contributes to the overall heat management within the grill by acting as a barrier between the burners and the cooking surface.

Regular monitoring of the grease level in the tray is recommended, especially during extended grilling sessions, to prevent overflow.

### 4. MAINTENANCE AND CLEANING

---

Proper maintenance of your EWH Stainless Steel Grease Tray will ensure its longevity and optimal performance.

1. **Regular Cleaning:** It is recommended to clean the grease tray after each grilling session, once the grill has completely cooled down. This prevents grease buildup and makes cleaning easier.
2. **Removal:** Carefully remove the tray from the grill.
3. **Scraping:** Use a plastic or wooden scraper to remove any solidified grease or food debris. Avoid using metal scrapers or abrasive pads that could scratch the stainless steel surface.
4. **Washing:** Wash the tray with warm, soapy water. A mild dish soap is sufficient. For stubborn grease, a degreaser specifically designed for kitchen use can be applied.
5. **Rinsing:** Rinse thoroughly with clean water to remove all soap residue.
6. **Drying:** Dry the tray completely with a soft cloth to prevent water spots and maintain the stainless steel's luster. Air drying is also acceptable.
7. **Storage:** If storing the grill for an extended period, ensure the grease tray is clean and dry before re-inserting it or storing it separately.

As the tray is made of high-quality 1.4301 / V2A stainless steel, it is inherently corrosion-resistant. However, regular cleaning helps maintain its appearance and hygiene.

### 5. TROUBLESHOOTING

---

While the EWH Stainless Steel Grease Tray is a simple and robust component, here are some common issues and their solutions:

- **Issue: Tray does not fit correctly.**
  - **Solution:** Double-check the dimensions of your grill's grease tray area against the product dimensions (60 x 33 x 1 cm). This tray is specifically for Landmann Triton 3.0/3.1 & 4.1. For Triton 2 series, a smaller version (44 x 33 x 1 cm) is required. Ensure you have the correct model.
- **Issue: Grease overflow.**
  - **Solution:** The tray needs to be emptied and cleaned more frequently. The frequency depends on the amount and type of food being grilled.
- **Issue: Stains or discoloration on the stainless steel.**
  - **Solution:** While stainless steel is corrosion-resistant, it can still show stains from burnt-on grease or mineral

deposits from water. Use a stainless steel cleaner or a paste of baking soda and water for stubborn spots, then rinse and dry thoroughly. Avoid steel wool or harsh abrasive cleaners.

## 6. SPECIFICATIONS

---

Attribute	Value
Product Dimensions	60 x 33 x 1 cm (23.78 x 13.07 x 0.39 inches)
Item Weight	1.5 kg (3.3 pounds)
Material	High-quality Stainless Steel (Grade 1.4301 / V2A)
Compatibility	Landmann Triton 3.0 / 3.1 & 4.1 grills
Model Number	W20711-2
Manufacturer	EWH
Origin	Made in Germany

## 7. WARRANTY AND SUPPORT

---

EWH is a medium-sized family business with a tradition in metal processing since 1870, committed to quality and customer satisfaction.

- **Quality Assurance:** This product is manufactured in Germany, ensuring high standards of quality and precision.
- **Environmental Commitment:** EWH prioritizes environmental protection and sustainable resource use. By providing high-quality replacement parts, the company supports the extended use of your grill, reducing waste.
- **Customer Support:** For any questions regarding compatibility, installation, or maintenance, please refer to the product listing or contact EWH customer service.



## Qualität & Präzision



**Figure 7.1:** An image depicting the manufacturing process, emphasizing the quality and precision involved in producing EWH products. This highlights the "Made in Saxony" commitment.

